



CITY OF LONG BEACH

DEPARTMENT OF PUBLIC WORKS

C-17

333 WEST OCEAN BOULEVARD • LONG BEACH, CA 90802 • (562) 570-6383 • FAX (562) 570-6012

September 4, 2018

HONORABLE MAYOR AND CITY COUNCIL
City of Long Beach
California

RECOMMENDATION:

Authorize the City Manager, or designee, to accept an easement deed from Long Beach Unified School District, owner of the property at 550 Silvera Avenue, for the installation of public utilities; and,

Accept State Clearing House Number 2017081044 for the project. (District 3)

DISCUSSION

Long Beach Unified School District is modernizing eight elementary schools and plans to use Charles F. Kettering Elementary School at 550 Silvera Avenue as its expanded interim instruction location. To accommodate the new use, it is necessary that an easement be granted to the City to allow for the installation of a double-check detector valve (Attachment A). This new line will provide backflow prevention to protect water supplies from contamination. Plans for the site consist of the installation and use of 12 temporary, portable buildings. The modernization projects are expected to take approximately eight years.

City staff conducted a review of affected agencies and there were no objections to the proposed easement. The proposed easement is in conformance with State Clearing House Number 2017081044, issued October 18, 2017.

This matter was reviewed by Deputy City Attorney Linda T. Vu on August 15, 2018 and by Budget Analysis Officer Julissa José-Murray on August 17, 2018.

TIMING CONSIDERATIONS

City Council action on this matter is not time critical.

FISCAL IMPACT

An easement processing fee in the amount of \$2,156 was deposited in the General Fund (GF) in the Public Works Department (PW). There is no local job impact associated with this recommendation.

SUGGESTED ACTION:

Approve recommendation.

Respectfully submitted,



CRAIG A. BECK,
DIRECTOR OF PUBLIC WORKS

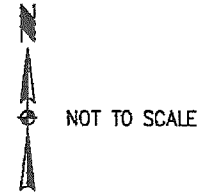
APPROVED:


PATRICK H. WEST
CITY MANAGER

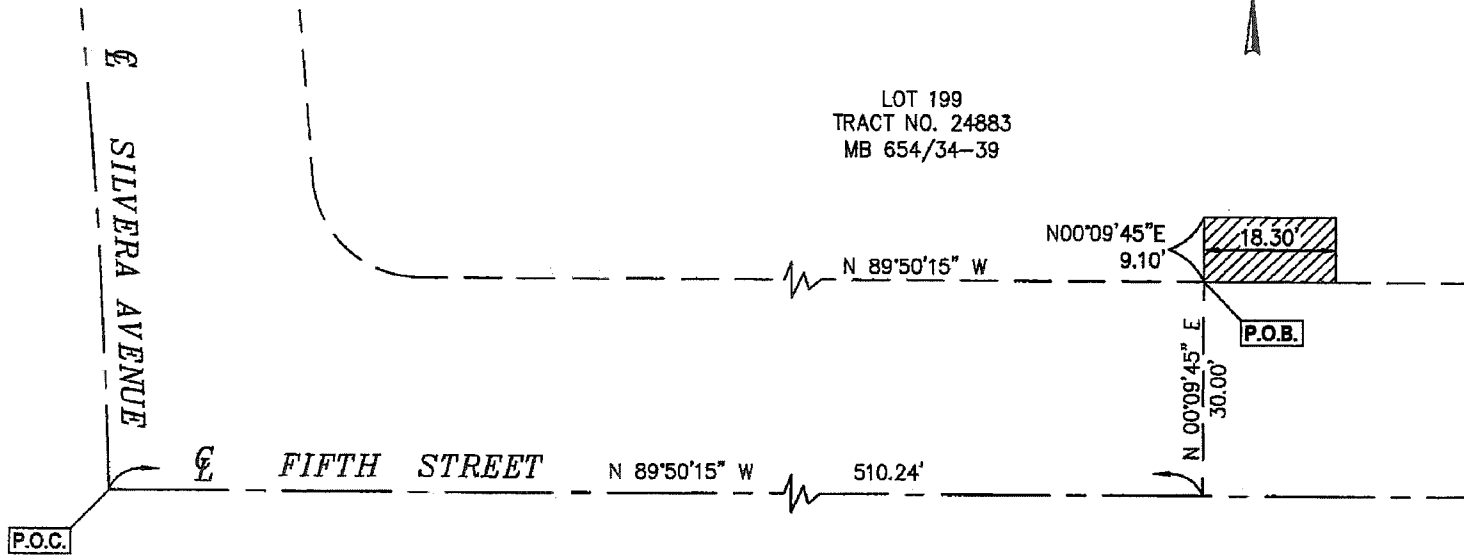
CB:SC:EL:JH:sdj:jc

ATTACHMENT: A – UTILITY EASEMENT

SKETCH NO. 812E
SKETCH SHOWING EASEMENT OVER A
PORTION OF LOT 199 OF TRACT NUMBER
24883 GRANTED TO THE
CITY OF LONG BEACH FOR WATER
PURPOSES

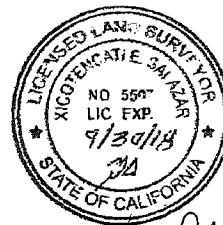


LOT 199
 TRACT NO. 24883
 MB 654/34-39



LEGEND
 MB - MAP BOOK
 NO. - NUMBER
 P.O.B. - POINT OF BEGINNING
 P.O.C. - POINT OF COMMENCEMENT

SALAZAR SURVEYING
 1655 E. 6TH STREET, SUITE A4A
 CORONA, CA 92879
 (951) 898-8328



Xicopencatie Salazar
 12/1/17

DEPARTMENT OF PUBLIC WORKS
 ENGINEERING BUREAU
 CITY OF LONG BEACH, CALIFORNIA
 ATTACHMENT A