



CITY OF LONG BEACH

DEPARTMENT OF PUBLIC WORKS

C-26

333 West Ocean Boulevard • Long Beach, CA 90802 • (562) 570-6383 • FAX (562) 570-6012

December 5, 2006

HONORABLE MAYOR AND CITY COUNCIL
City of Long Beach
California

RECOMMENDATION:

Authorize the City Attorney to accept two easement deeds for storm drain and access purposes and authorize a quitclaim of the easement to the County of Los Angeles (County), related to the development of Douglas Park. (District 5)

DISCUSSION

A master drainage plan was prepared for the development of Douglas Park; the required storm drain main lines will be built by the developer. Upon completion of construction, the City of Long Beach will quitclaim these public storm drain facilities to the County for long-term maintenance. Most of the drainage improvements will be constructed within the area being subdivided for this development (Tract Map No. 61252-1). Four areas outside of the subdivision are needed for storm drain purposes. Accordingly, it is appropriate to record a grant of easement over these areas. The proposed easement areas are shown on the attached Exhibit A.

Assistant City Attorney Michael J. Mais reviewed this matter on October 23, 2006. In conformance with the California Environmental Quality Act, Environmental Impact Report No. 2001051048 was certified for this project.

TIMING CONSIDERATIONS

City Council action on this matter is not time critical.

FISCAL IMPACT

A document-processing fee of \$490 was paid by the developer and deposited in the General Fund (GP) in the Department of Public Works (PW).

**ADMINISTRATION,
PLANNING & FACILITIES**
333 W. Ocean Blvd., 9th Floor
Long Beach, CA 90802
Ph. (562) 570-6383
Fax (562) 570-6012

AIRPORT
4100 Donald Douglas Dr.
Long Beach, CA 90808
Ph. (562) 570-2600
Fax (562) 570-2601

**ENGINEERING & STREET
MAINTENANCE**
333 W. Ocean Blvd., 9th Floor
Long Beach, CA 90802
Ph. (562) 570-6634
Fax (562) 570-6012

**ENVIRONMENTAL
SERVICES**
2929 E. Willow Street
Long Beach, CA 90806
Ph. (562) 570-2850
Fax (562) 570-2861

FLEET SERVICES
2600 Temple Avenue
Long Beach, CA 90806
Ph. (562) 570-5400
Fax (562) 570-5414


**TRAFFIC &
TRANSPORTATION**
333 W. Ocean Blvd., 10th Floor
Long Beach, CA 90802
Ph. (562) 570-6331
Fax (562) 570-7161

HONORABLE MAYOR AND CITY COUNCIL
December 5, 2006
Page 2

SUGGESTED ACTION:

Approve recommendation.

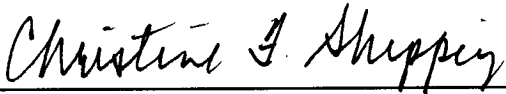
Respectfully submitted,


CHRISTINE F. ANDERSEN
DIRECTOR OF PUBLIC WORKS

GMM:SC:km
P:\CL\RW Boeing storm drain esmt.doc

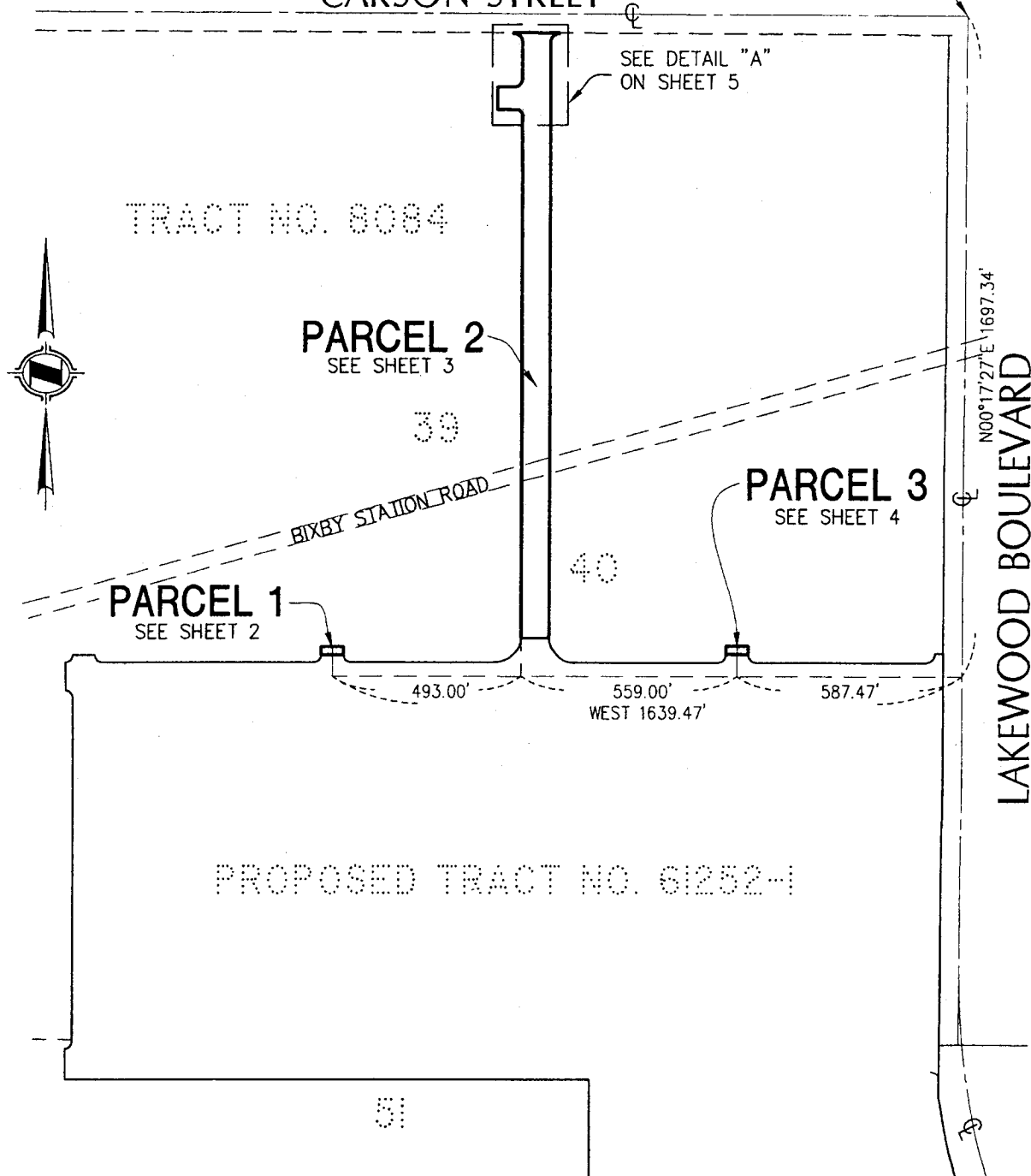
Attachments

APPROVED:


for 
GERALD R. MILLER
CITY MANAGER

Sketch to Accompany Legal Description
CARSON STREET

P.O.C.



**EASEMENT AREAS TO BE DEDICATED
 NORTH OF TRACT NO. 61252-1**

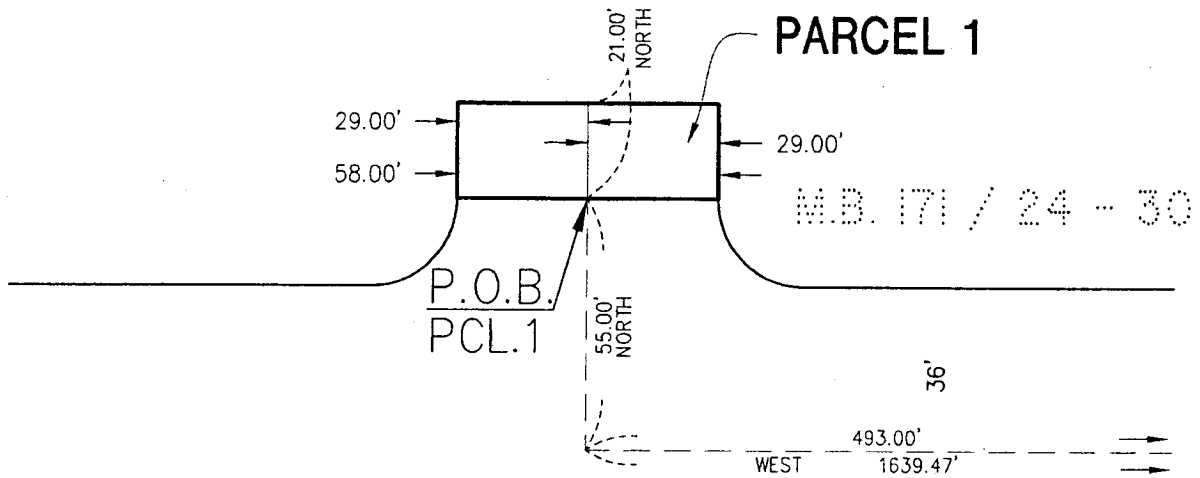
 HUNSAKER & ASSOCIATES IRVINE, INC. PLANNING ■ ENGINEERING ■ SURVEYING Three Hughes • Irvine, CA 92618 • PH: (949) 583-1010 • FX: (949) 583-0759		EASEMENT FOR STORM DRAIN IN THE CITY OF LONG BEACH, COUNTY OF LOS ANGELES, STATE OF CALIFORNIA	
DATE: 8-25-06	REV. DATE: None	DWG By: R. WHEELER	CK'd By: L. RUSH
FILE: I:\DouglasPark\LD\6775\sht01.dwg	SCALE: 1"=400'		W.O. 2143-5X
		H&A LEGAL No. 6775	

Sketch to Accompany Legal Description


TRACT NO. 8084



40



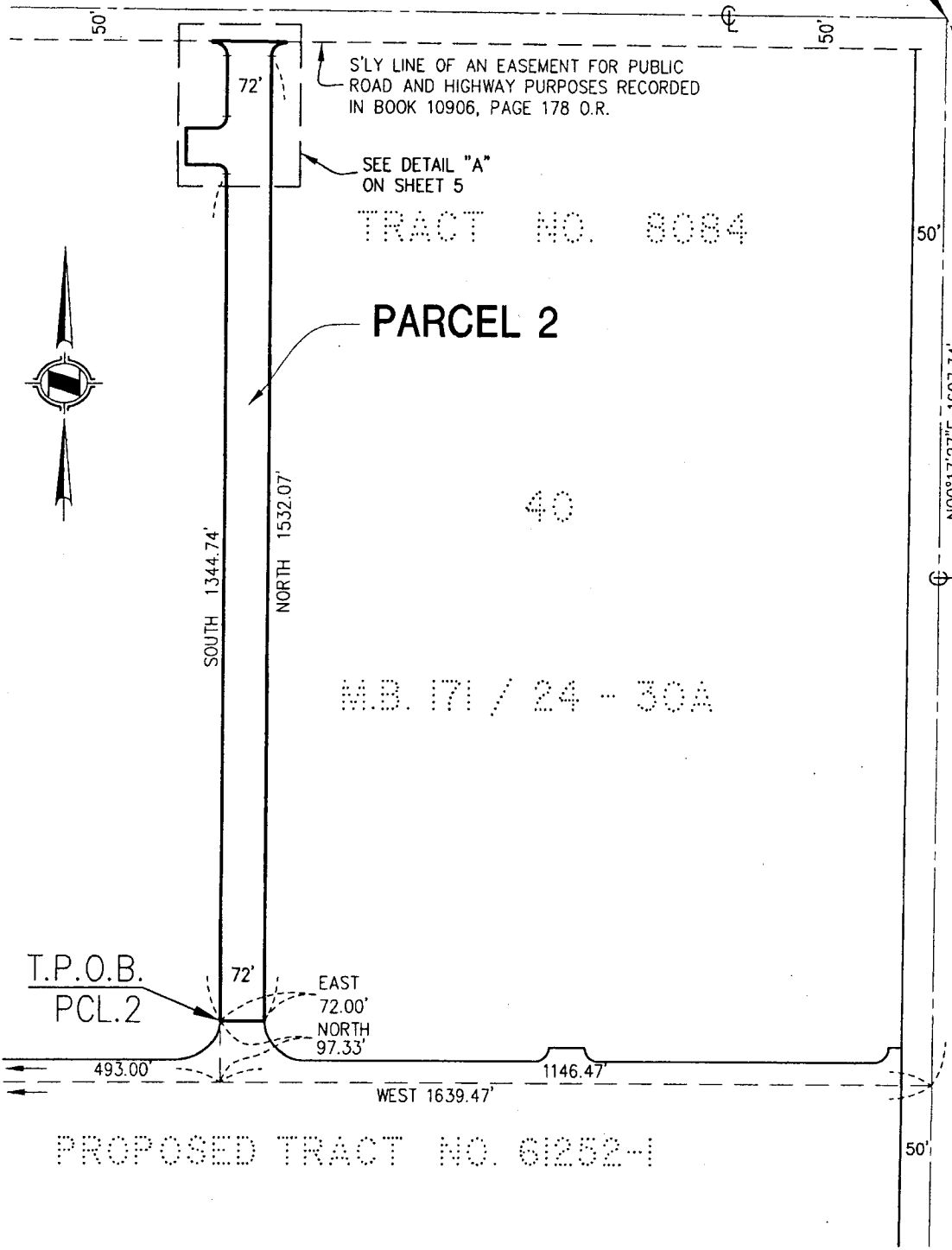
PROPOSED TRACT NO. 61252-1

 HUNSAKER & ASSOCIATES IRVINE, INC. PLANNING ■ ENGINEERING ■ SURVEYING Three Hughes • Irvine, CA 92618 • PH: (949) 583-1010 • FX: (949) 583-0759			EASEMENT FOR STORM DRAIN PURPOSES IN THE CITY OF LONG BEACH, COUNTY OF LOS ANGELES, STATE OF CALIFORNIA		
DATE: 8-25-06	REV. DATE: None	DWG. By: R. WHEELER	CK'd By: L. RUSH	SCALE: 1"=40'	W.O. 2143-5X
FILE: I:\DouglasPark\LD\6775\sht02.dwg			H&A LEGAL No. 6775		

Sketch to Accompany Legal Description

P.O.C.

CARSON STREET



T.P.O.B.
PCL.2

EAST
72.00'
NORTH
97.33'

PROPOSED TRACT NO. 61252-1

LAKEWOOD BOULEVARD



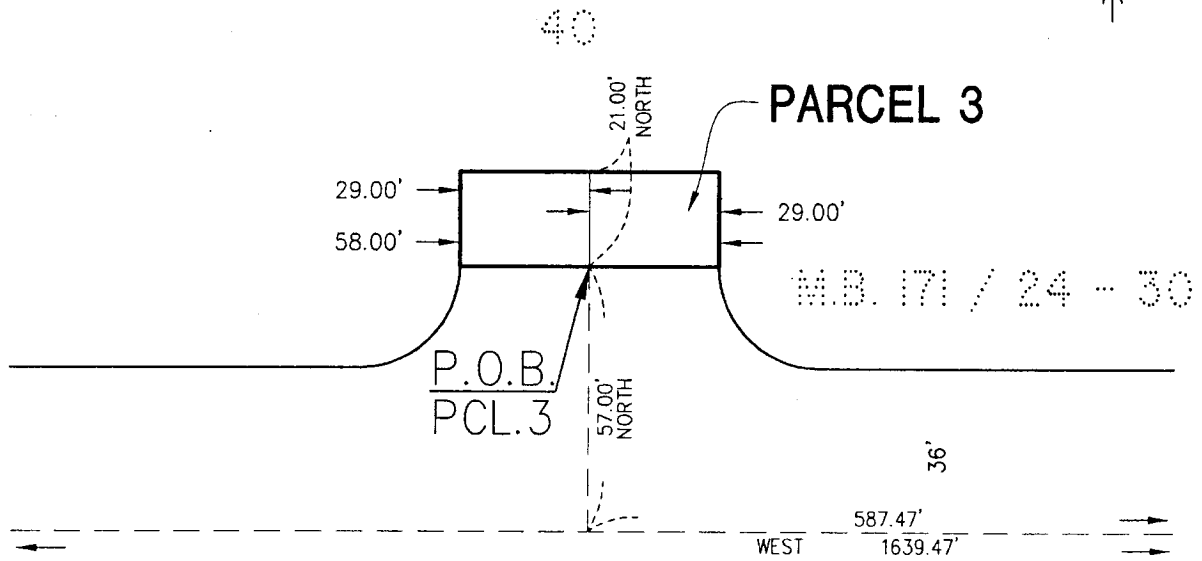
HUNSAKER & ASSOCIATES
IRVINE, INC.
PLANNING • ENGINEERING • SURVEYING
Three Hughes • Irvine, CA 92618 • PH: (949) 583-1010 • FX: (949) 583-0759

EASEMENT
FOR STORM DRAIN PURPOSES
IN THE CITY OF LONG BEACH, COUNTY OF LOS ANGELES, STATE OF CALIFORNIA


DATE: 8-25-06	REV. DATE: None	DWG. By: R. WHEELER	CK'd By: L. RUSH	SCALE: 1"=250'	W.O. 2143-5X
FILE: I:\DouglasPark\LD\6775\sht03.dwg				H&A LEGAL No. 6775	

Sketch to Accompany Legal Description

TRACT NO. 8084



PROPOSED TRACT NO. 61252-1

 HUNSAKER & ASSOCIATES IRVINE, INC. PLANNING ■ ENGINEERING ■ SURVEYING Three Hughes • Irvine, CA 92618 • PH: (949) 583-1010 • FX: (949) 583-0759		EASEMENT FOR STORM DRAIN PURPOSES IN THE CITY OF LONG BEACH, COUNTY OF LOS ANGELES, STATE OF CALIFORNIA			
DATE: 8-25-06	REV. DATE: None	DWG. By: R. WHEELER	CK'd By: L. RUSH	SCALE: 1"=40'	W.O. 2143-5X
FILE: I:\DouglasPark\LD\6775\sht04.dwg			H&A LEGAL No. 6775		

Sketch to Accompany Legal Description
CARSON STREET

P.O.C.

**EASEMENT AREA TO BE DEDICATED
 SOUTH OF TRACT NO. 61252-1**

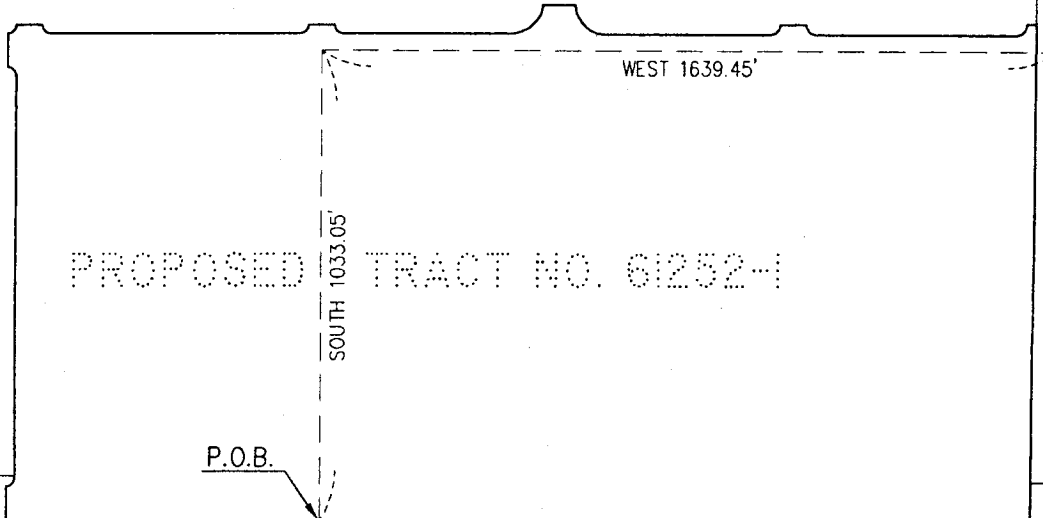


39
 BIXBY STATION ROAD

40

N00°17'27"E 1697.34'

LAKWOOD BOULEVARD




PROPOSED TRACT NO. 61252-1

P.O.B.

51

PARCEL 1
 SEE SHEET 2

M.B. 171 / 24 - 30

 HUNSAKER & ASSOCIATES IRVINE, INC. PLANNING ■ ENGINEERING ■ SURVEYING Three Hughes • Irvine, CA 92618 • PH: (949) 583-1010 • FX: (949) 583-0759		EASEMENT FOR STORM DRAIN PURPOSES IN THE CITY OF LONG BEACH, COUNTY OF LOS ANGELES, STATE OF CALIFORNIA		
DATE: 8-25-06	REV. DATE: ---	DWG By: R. WHEELER	CK'd By: L. RUSH	SCALE: 1"=400'
FILE: I:\DouglasPark\LD\6776\sht01.dwg				W.O. 2143-5X
				H&A LEGAL No. 6776

