



CITY OF LONG BEACH

H-2

DEPARTMENT OF DEVELOPMENT SERVICES

333 West Ocean Blvd., 4th Floor Long Beach, CA 90802 Phone: 570.5237 Fax: 570.6205

July 6, 2010

HONORABLE MAYOR AND CITY COUNCIL
City of Long Beach
California

RECOMMENDATION:

Receive supporting documentation into the record, conclude the hearing, and adopt a resolution supporting boundary adjustments between the cities of Long Beach, Seal Beach and Los Alamitos, and Los Angeles and Orange Counties.
(Districts 3 and 5)

DISCUSSION

In November 2009, the City Council held a workshop to consider recommendations from the Orange County Local Agency Formation Commission (LAFCO) boundary report. The report detailed the areas where illogical boundaries exist between Orange and Los Angeles Counties. In addition to twelve other cities and an unincorporated area in Orange County, the report identified areas in Long Beach, Seal Beach and Los Alamitos that are negatively impacted by the current boundary configuration.

In response to City Council direction, staff has been working cooperatively with the cities of Seal Beach and Los Alamitos to modify the areas that are located along the Los Coyotes flood control channel and the San Gabriel River to better align with service delivery boundaries and physical barriers. Currently, there are five separate areas in the proposed boundary line adjustment between Long Beach and Seal Beach, and two separate areas between Long Beach and Los Alamitos. These areas are further described as follows:

- Area 1 – A 10.54-acre area that includes a small portion of Alamitos Bay Marina and Khoury's parking lot. This area will be moved from Seal Beach to Long Beach (Exhibit A – Adjustment Area 1).
- Area 2 – A 1.05-acre area that includes the bike path located along the San Gabriel River Channel north of Marina Drive Bridge. This area will be moved from Long Beach to Seal Beach (Exhibit B – Adjustment Area 2).
- Area 3 – A 3.83-acre area that includes a portion of Seal Beach Mobile Home Park, parking lot behind Oakwood Apartments and eastern edge of San Gabriel River. This area will be moved from Long Beach to Seal Beach (Exhibit C – Adjustment Area 3).

- Area 4 – A 4.97-acre area that is along the west edge of Hellman Ranch near the Haynes Plant cooling water outfall. This area will be moved from Seal Beach to Long Beach (Exhibit D – Adjustment Area 4).
- Area 5 – A 19.58-acre area adjacent to College Estates Park that includes a tennis court, park area and the west side of the San Gabriel River Channel. This transfer includes 2.17 acres from the County of Orange to Long Beach and 17.41 acres from Seal Beach to Long Beach (Exhibit E – Adjustment Area 5).
- Area 6 – This item was discovered late in the process by LAFCO, and includes a 36.53-acre area owned by Southern California Edison located north of the 405 freeway on the east side of the flood control channel. This area will be moved from Long Beach to Los Alamitos (Exhibit F – Adjustment Area 6).
- Area 7 – A 1.31-acre area adjacent to seven residential properties and Stansbury Park. This area will be moved from Long Beach to Los Alamitos (Exhibit G – Adjustment Area 7).

The total area affected by the boundary adjustment is 77.81 acres with 35.09 acres being moved into Long Beach and 42.72 acres being moved out of Long Beach. No residential neighborhoods are included, and the adjustment will effectively clean up the inconsistencies for the area.

As part of the boundary adjustment process, the affected cities/counties must agree on the changes and each city must provide a resolution supporting the adjustment. Therefore, a resolution has been prepared for consideration and staff recommends that the City Council approve the resolution. Both Seal Beach and Los Alamitos are also in the process of providing a resolution to support the adjustment.

Once the approval from the respective City Councils is obtained, the proposed boundary adjustment will be processed by the Los Angeles and Orange County Boards of Supervisors, with assistance and follow-up as required by the affected cities.

This letter was reviewed by Assistant City Attorney Michael Mais on June 21, 2010 and by Budget Management Officer Victoria Bell on June 17, 2010.

TIMING CONSIDERATIONS

City Council action on this matter is requested on July 6, 2010, so the boundary adjustment request can be submitted to LAFCO.

FISCAL IMPACT

There is no fiscal impact from the proposed boundary realignments and no known jobs impact associated with the recommended action.

SUGGESTED ACTION:

Approve recommendation.

July 6, 2010

Page 3 of 3

Respectfully submitted,



REGINALD I. HARRISON

INTERIM DIRECTOR OF DEVELOPMENT SERVICES

RH:DB:jw

P:\Planning\City Council Items (Pending)\Council Letters\2010-07-06\Boundary.CCLTR07062010.doc

Attachments: Exhibit A - Adjustment Area 1
Exhibit B - Adjustment Area 2
Exhibit C - Adjustment Area 3
Exhibit D - Adjustment Area 4
Exhibit E - Adjustment Area 5
Exhibit F - Adjustment Area 6
Exhibit G - Adjustment Area 7
Resolution

APPROVED:



PATRICK H. WEST
CITY MANAGER

Exhibit A

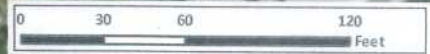


Los Angeles & Orange Counties
Boundary Adjustment Areas
Area 1

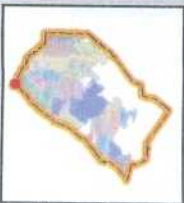
Legend

- Existing Boundary
- Proposed Boundary
- Boundary Adjustment Area

Aerial imagery courtesy of Bing maps; data courtesy of the City of Long Beach and Orange County LAFCO



**Los Angeles & Orange Counties
Boundary Adjustment Areas
Area 2**



Legend

- Existing Boundary
- Proposed Boundary
- Boundary Adjustment Area

Aerial imagery courtesy of Bing maps; data courtesy of the City of Long Beach and Orange County LAFCO

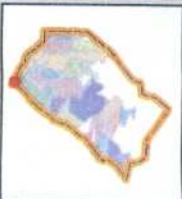
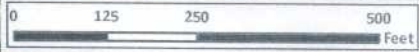
Exhibit C



Long
Beach

Area 3
3.83 Acres

Seal
Beach

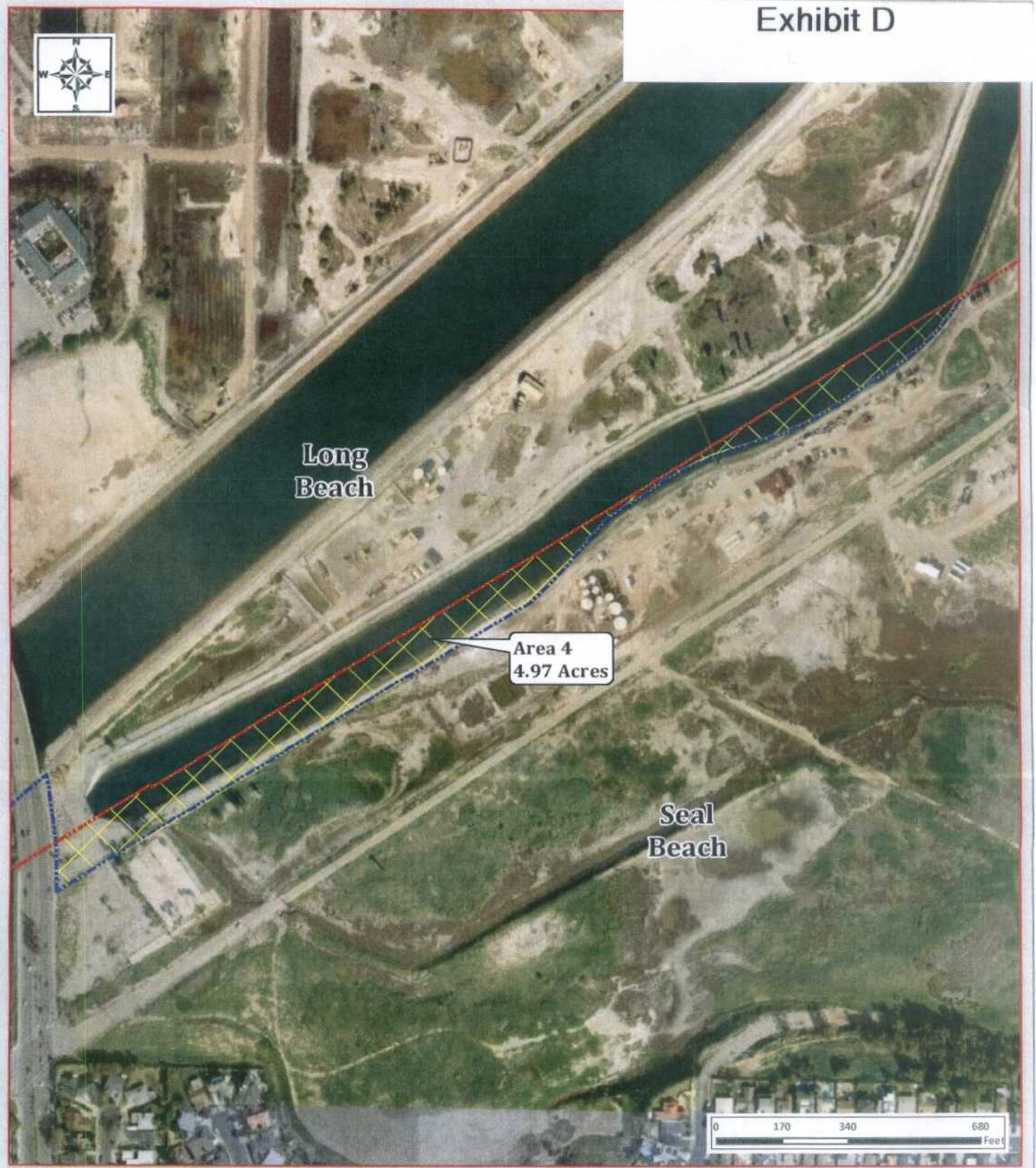


Los Angeles & Orange Counties Boundary Adjustment Areas Area 3

Legend

- Existing Boundary
- Proposed Boundary
- Boundary Adjustment Area

Aerial imagery courtesy of Bing maps; data courtesy of the City of Long Beach and Orange County IAFCO



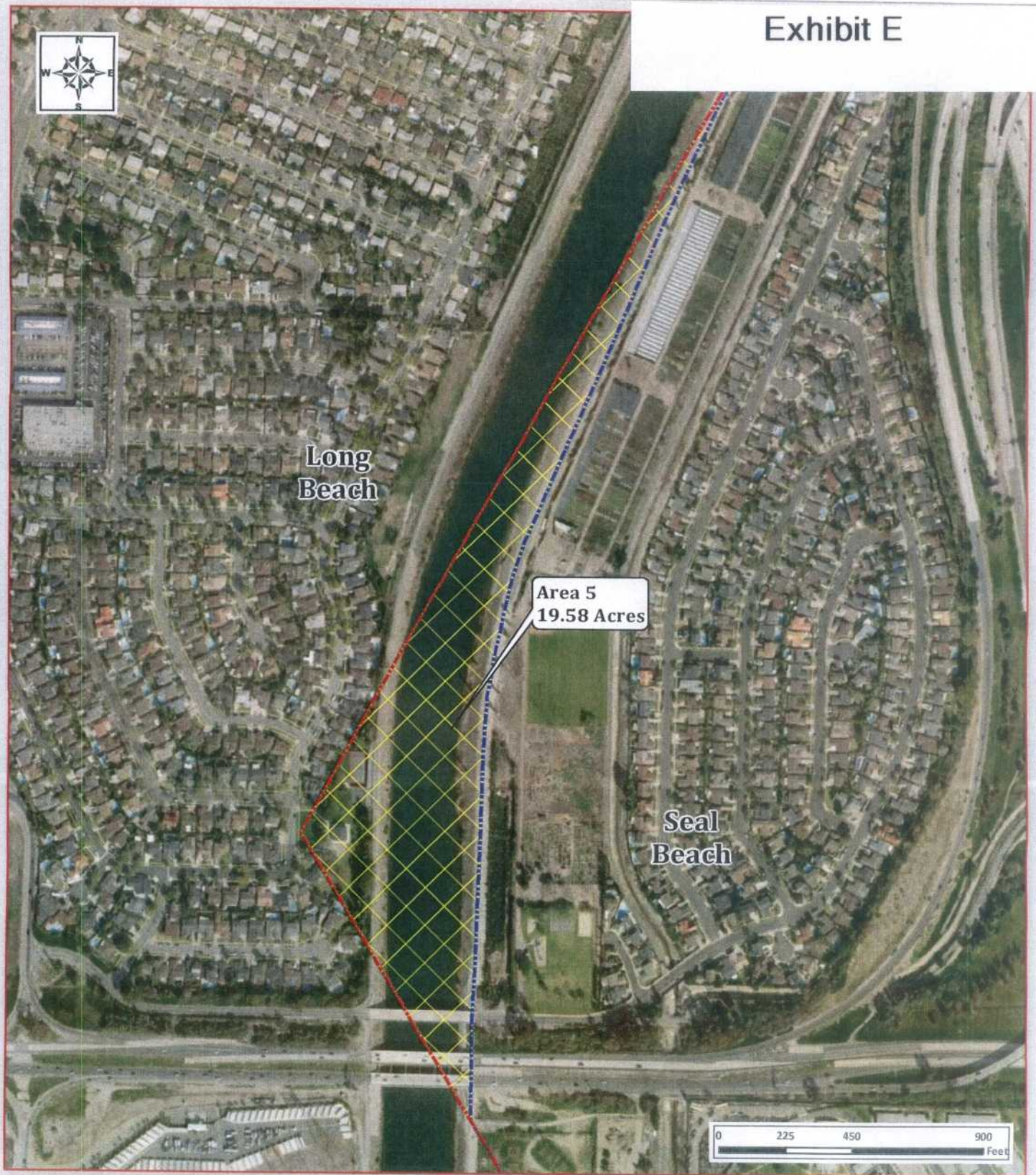
Los Angeles & Orange Counties
Boundary Adjustment Areas
Area 4



Legend

- Existing Boundary
- Proposed Boundary
- Boundary Adjustment Area

Aerial imagery courtesy of Bing maps; data courtesy of the City of Long Beach and Orange County IAFCO



**Los Angeles & Orange Counties
Boundary Adjustment Areas
Area 5**

Legend

- Existing Boundary
- Proposed Boundary
- Boundary Adjustment Area

Aerial imagery courtesy of Bing maps; data courtesy of the City of Long Beach and Orange County IAFCO

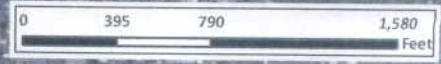


Long Beach

Area 6
36.53 Acres




Los Alamitos

Seal Beach

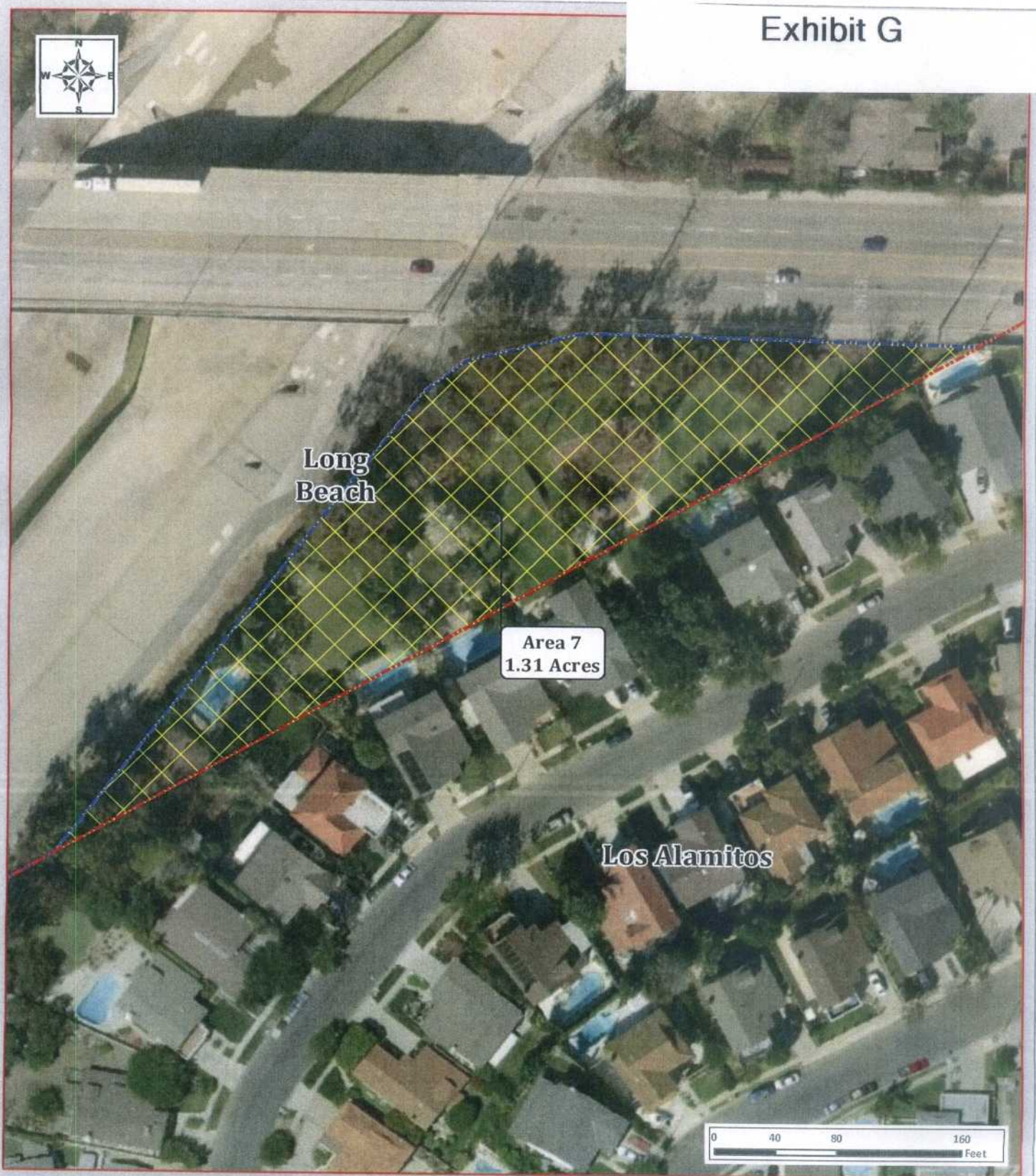


Los Angeles & Orange Counties Boundary Adjustment Areas Area 6

Legend

-  Existing Boundary
-  Proposed Boundary
-  Boundary Adjustment Area

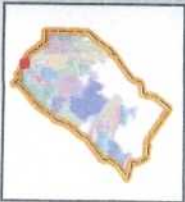
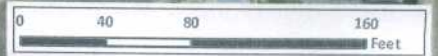
Aerial imagery courtesy of Bing maps; data courtesy of the City of Long Beach and Orange County LAFCO



Long
Beach

Area 7
1.31 Acres

Los Alamitos



Los Angeles & Orange Counties
Boundary Adjustment Areas
Area 7

Legend

- Existing Boundary
- Proposed Boundary
- Boundary Adjustment Area

Aerial imagery courtesy of Bing maps; data courtesy of the City of Long Beach and Orange County LAFCO

OFFICE OF THE CITY ATTORNEY
ROBERT E. SHANNON, City Attorney
333 West Ocean Boulevard, 11th Floor
Long Beach, CA 90802-4664

1
2
3
4
5
6
7
8
9
10
11
12
13
14
15
16
17
18
19
20
21
22
23
24
25
26
27
28

RESOLUTION NO.

A RESOLUTION OF THE CITY COUNCIL OF THE
CITY OF LONG BEACH INITIATING A JOINT BOUNDARY
ADJUSTMENT PROCESS BETWEEN THE CITIES OF
LONG BEACH, SEAL BEACH, AND LOS ALAMITOS, AND
THE COUNTY OF ORANGE AND THE COUNTY OF LOS
ANGELES

The City Council of the City of Long Beach resolves as follows:

Section 1. The three cities of Long Beach, Seal Beach, and Los Alamitos are jointly interested in adjusting city limits to recognize the physical barriers created by the San Gabriel River channel and the 605 Freeway.

Section 2. Adjusting the City limits to recognize these physical barriers will allow for better service delivery and improved public safety.

Section 3. Those areas affected by the boundary line adjustments are depicted and set forth as Areas 1 through 7, inclusive, on Exhibit "A" which is attached hereto and incorporated herein by this reference.

Section 4. Adjusting the City limits also requires adjusting the County boundaries of Orange County and Los Angeles County.

Section 5. Adjusting County boundaries requires joint action by the Boards of Supervisors for Orange County and Los Angeles County.

Section 6. The County Boundary Adjustments will be undertaken pursuant to Government Code Section 23203. The proposed Adjustments will not move the County line by more than five (5) miles from its original location. The proposed Adjustments will not reduce the area of any affected county by more than five percent (5%). The proposed Adjustments will not reduce the population of any affected county by

OFFICE OF THE CITY ATTORNEY
ROBERT E. SHANNON, City Attorney
333 West Ocean Boulevard, 11th Floor
Long Beach, CA 90802-4664

1 more than five percent (5%). There are no conditions attached to the proposed boundary
2 changes.

3 Section 7. The City Council authorizes staff to work with the Orange
4 County Board of Supervisors and Los Angeles County Board of Supervisors to process
5 the County Boundary Adjustments and the Orange County and Los Angeles County
6 Local Agency Formation Commissions for subsequent boundary changes.

7 Section 8. The City Council hereby supports the County Boundary
8 Adjustments and requests that the Orange and Los Angeles County Boards of
9 Supervisors formally initiate the process pursuant to Government Code Section 23200, et
10 seq.

11 Section 9. This resolution shall take effect immediately upon its adoption
12 by the City Council, and the City Clerk shall certify the vote adopting this resolution.

13 I hereby certify that the foregoing resolution was adopted by the City
14 Council of the City of Long Beach at its meeting of _____, 20__ by the
15 following vote:

16
17 Ayes: Councilmembers: _____
18 _____
19 _____
20 _____

21 Noes: Councilmembers: _____
22 _____




23 Absent: Councilmembers: _____
24 _____

25
26
27 _____
28 City Clerk



**Los Angeles & Orange Counties
Boundary Adjustment Areas
Area 1**

Legend

-  Existing Boundary
-  Proposed Boundary
-  Boundary Adjustment Area

Aerial imagery courtesy of Bing maps; data courtesy of the City of Long Beach and Orange County LAFCO

EXHIBIT "A"



**Los Angeles & Orange Counties
Boundary Adjustment Areas
Area 2**



| Legend | |
|--------|--------------------------|
| | Existing Boundary |
| | Proposed Boundary |
| | Boundary Adjustment Area |




Aerial imagery courtesy of Bing maps; data courtesy of the City of Long Beach and Orange County LAFCO

EXHIBIT "A"



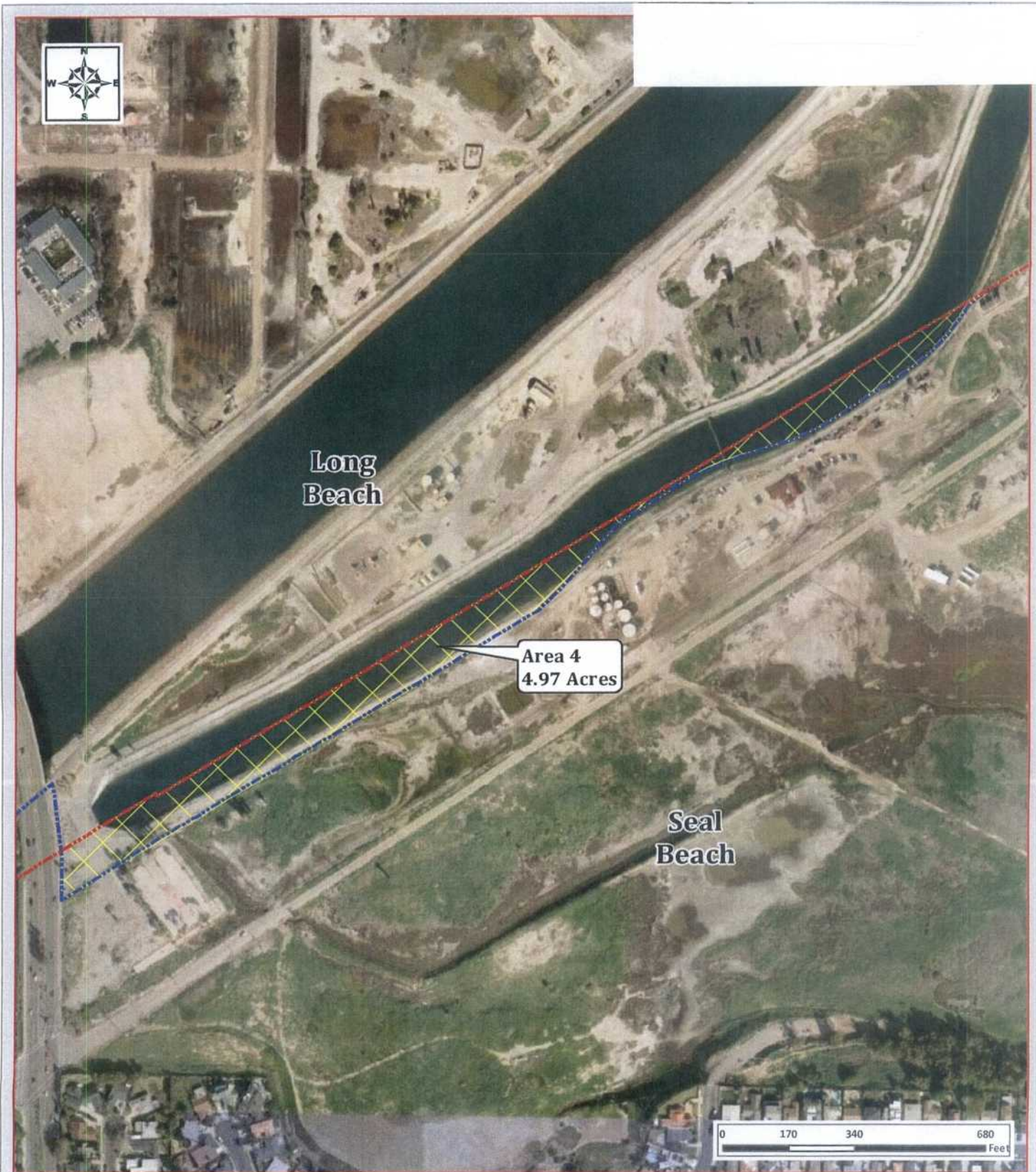
**Los Angeles & Orange Counties
Boundary Adjustment Areas
Area 3**

Legend

-  Existing Boundary
-  Proposed Boundary
-  Boundary Adjustment Area

Aerial imagery courtesy of Bing maps; data courtesy of the City of Long Beach and Orange County LAECO

EXHIBIT "A"



Los Angeles & Orange Counties
 Boundary Adjustment Areas
 Area 4



Aerial imagery courtesy of Bing maps; data courtesy of the City of Long Beach and Orange County LAFCO

Legend




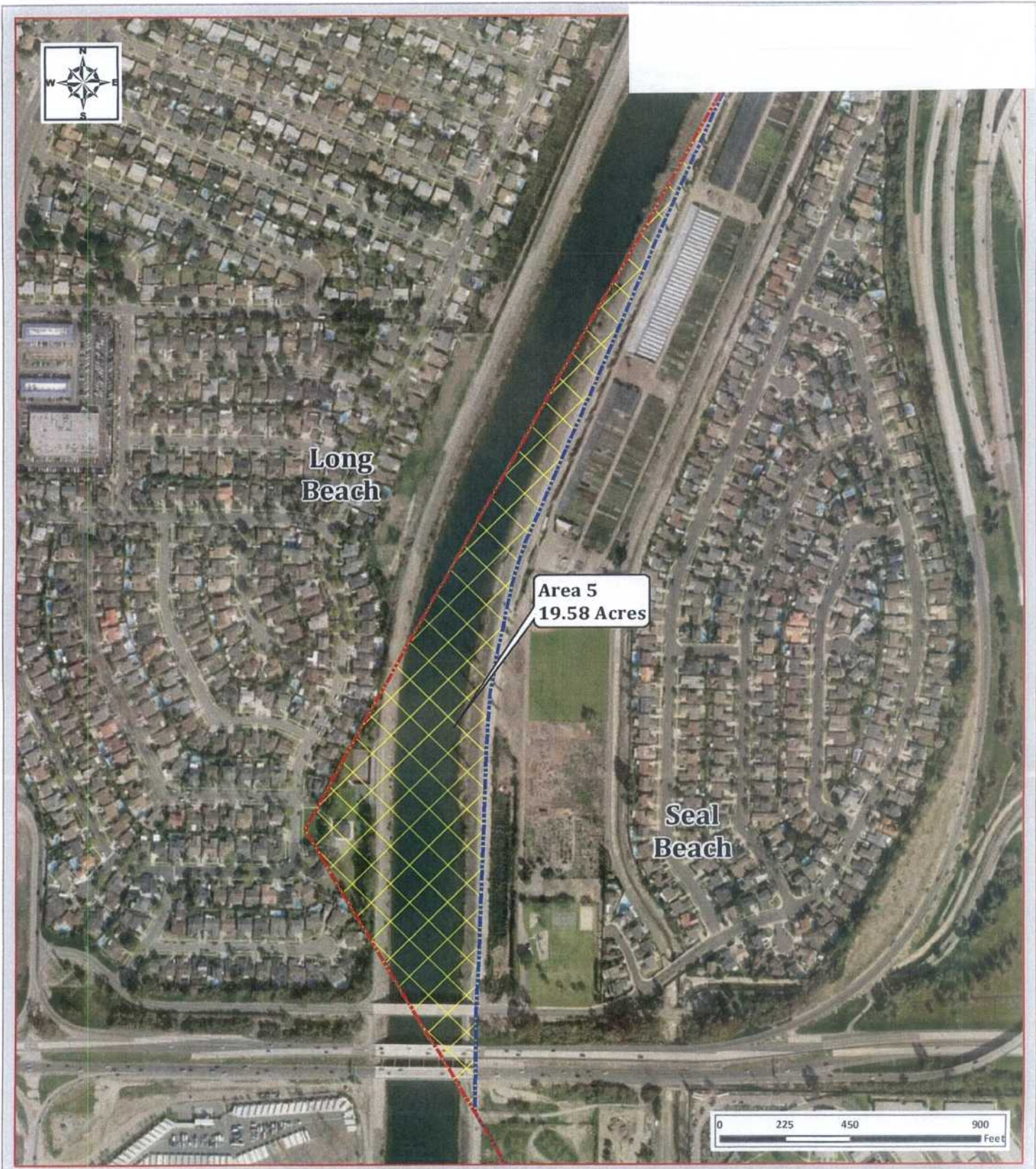
-  Existing Boundary
-  Proposed Boundary
-  Boundary Adjustment Area

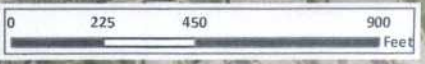
EXHIBIT "A"



Long
Beach




Area 5
19.58 Acres

Seal
Beach



**Los Angeles & Orange Counties
Boundary Adjustment Areas
Area 5**

Legend

-  Existing Boundary
-  Proposed Boundary
-  Boundary Adjustment Area

Aerial imagery courtesy of Bing maps; data courtesy of the City of Long Beach and Orange County LAFCO

EXHIBIT "A"

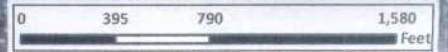


Area 6
36.53 Acres

Long
Beach

Los
Alamitos

Seal
Beach

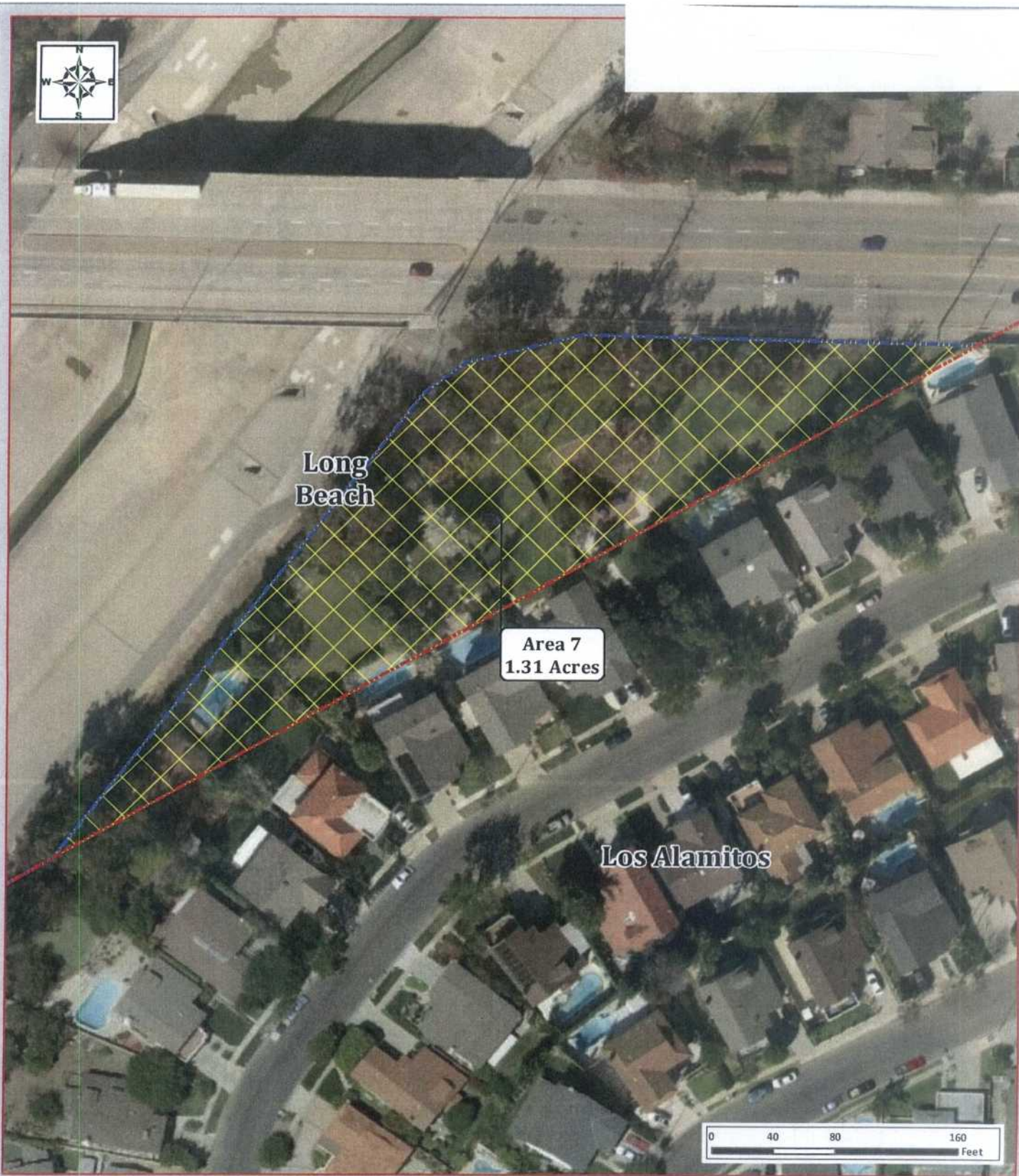


Los Angeles & Orange Counties Boundary Adjustment Areas Area 6

| Legend | |
|--------|--------------------------|
| | Existing Boundary |
| | Proposed Boundary |
| | Boundary Adjustment Area |

Aerial imagery courtesy of Bing maps; data courtesy of the City of Long Beach and Orange County LAFCO

EXHIBIT "A"



Los Angeles & Orange Counties Boundary Adjustment Areas Area 7

| Legend | |
|--------|--------------------------|
| | Existing Boundary |
| | Proposed Boundary |
| | Boundary Adjustment Area |

Aerial imagery courtesy of Bing maps; data courtesy of the City of Long Beach and Orange County LAFCO

EXHIBIT "A"