

# Blight Removal In Redevelopment Areas 2004 - 2009



Working Together  
to Enhance Long Beach

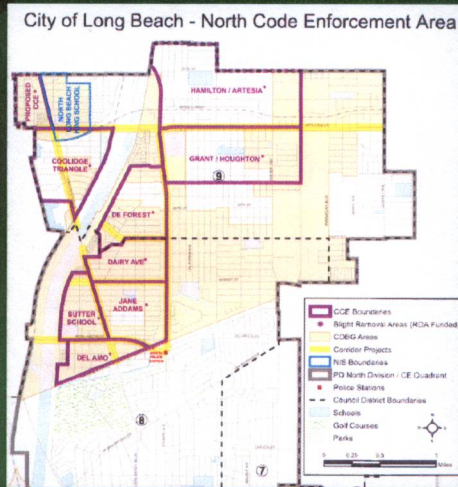
## Redevelopment Agency / Community Development Department Partnership

### Partnership Goals

- Remove blighted conditions from our neighborhoods
- Improve the quality of life for residents and businesses
- Enhance the desirability of commercial corridors
- Leverage funds (CDBG, RDA, Housing Set-aside, Property Owner Investment) for optimal improvements



## NORTH Redevelopment Area



## North RDA Blight Removal Programs

- 8 Commercial Corridors
- 4 Community Code Enforcement (CCE) Neighborhoods
- 14 Neighborhood Enhancement Areas (NEA)
- 1 Housing Action Plan (HAP) Area



## North RDA Commercial Corridor Blight Removal Program

### Code Enforcement Efforts

- Artesia
- Atlantic Avenue
- Cherry Avenue
- Del Amo Blvd
- Long Beach Blvd
- Market Street
- South Street
- Paramount Blvd

## **COMMERCIAL CORRIDOR BLIGHT REMOVAL PROGRAM**

REDEVELOPMENT AGENCY/NEIGHBORHOOD SERVICES

- Business Owner Meetings
- Business Improvement Rebates
- Code Enforcement
- Corridor Review
- Illegal Sign Removals
- Shopping Cart Enforcement
- Graffiti Reports



## North RDA Commercial Corridor Blight Removal Program

### Code Enforcement Efforts

#### Code Enforcement staff:

- survey commercial corridors
- inform business and property owners about need for improvement
- offer resources to assist in improvements
- issue citations when necessary

## North RDA Commercial Corridor Blight Removal Program

### Code Enforcement Efforts

Code Enforcement results since 2004

Number of Cases Opened - 1,832

Number of Cases Closed - 1,772

Staff continues to review all corridors, meet with RDA staff to ensure desired results are being achieved, stay in communication with business owners.



## North RDA Commercial Corridor Blight Removal Program

### Commercial Improvement Rebate

The Commercial Improvement Rebate Program provides rebates to assist in the improvement of commercial properties located on targeted corridors.

- \$373,780 in CDBG funds - 192 business and property owners for exterior property improvements along the corridors
- **\$226,606** in property owner investment

## North RDA Commercial Corridor Blight Removal Program

### Corridor Review

Program components:

- Survey commercial corridors in North Long Beach
- Remove illegal signs and/or refer illegal signs to Code Enforcement
- Report instances of graffiti and abandoned shopping carts

Since October, 2008:

- 2,263 Illegal Signs have been removed from the public right of way
- 228 Abandoned Shopping Carts have been reported
- 10,354 instances of graffiti removed



## 5400 Cherry Avenue



Before



During



After

## 5301 Cherry Avenue



Before



After



## 5674 Cherry Avenue



Before



Before



After

## 5640 Cherry Avenue



Before



After



## 6514 Paramount Blvd



Before



After

## North RDA Community Code Enforcement (CCE) Program

### Program features:

- Educate residents about code violations and required processes
- Work with residents to identify and prioritize violations
- Coordinate enforcement activity when necessary
- Provide one point of contact for residents
- Provide continual feedback on referrals
- Continued review of the area to ensure compliance



## North RDA Community Code Enforcement (CCE) Program

### North Redevelopment Community Code Enforcement neighborhoods

- Coolidge
- DeForest
- Grant / Houghton
- Hamilton / Artesia

## North RDA Community Code Enforcement (CCE) Program

Since 2004, Code Enforcement has:

- Held 69 Community Meetings
- Opened **2,594** Cases
- Closed **2,456** Cases
- 55 Neighborhood cleanups resulting in the removal of 495 tons of trash



## North RDA Community Code Enforcement (CCE) Program



Before



After

## North RDA Community Code Enforcement (CCE) Program



Before



After



## North RDA Community Code Enforcement (CCE) Program

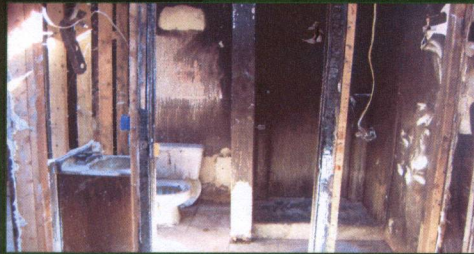


Before

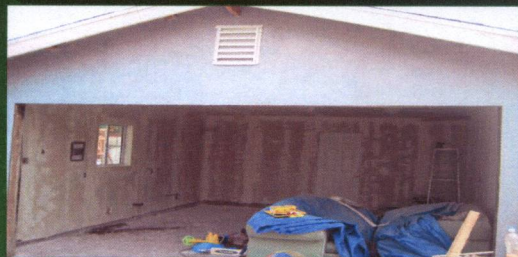


After

## North RDA Community Code Enforcement (CCE) Program



Before  
(converted garage)



After



## North Long Beach Neighborhood Enhancement Area (NEA) Program

- Coolidge
- Dairy
- Del Amo
- Hamilton
- Jane Addams
- Lindbergh
- Ramona
- California/Cherry
- DeForest
- Grant
- Harte
- Jordan
- McKinley
- Sutter

## North Long Beach Neighborhood Enhancement Area (NEA) Program

The NEA Program provides rebates to assist the improvement of residential properties within targeted neighborhoods.

- Rebates of up to \$2,000 for exterior improvements to residential properties
- Rebates for home security lighting
- Rebates for security locks

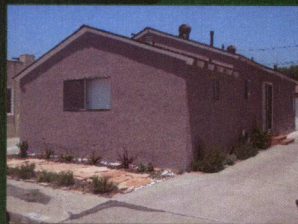


## North Long Beach Neighborhood Enhancement Area (NEA) Program

Redevelopment funded rebates provided to date:

- 3,812 Home Improvement Rebates (\$4,190,570)
- 2,188 Security Lighting (\$208,393)
- 1,970 Security Lock (\$132,351)

## North Long Beach Neighborhood Enhancement Area (NEA) Program



Before

After





## North Long Beach Neighborhood Enhancement Area (NEA) Program



Before

After



## North Long Beach Neighborhood Enhancement Area (NEA) Program



Before

After





## North Long Beach Neighborhood Enhancement Area (NEA) Program



Before



After

## North Long Beach Neighborhood Enhancement Area (NEA) Program



Before



After



## North Long Beach Neighborhood Enhancement Area (NEA) Program



Before

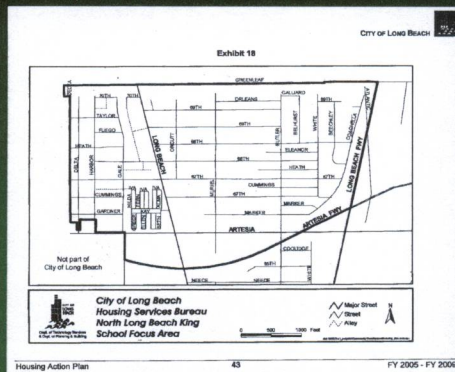


After



## North Long Beach Housing Action Plan (HAP)

The Housing Services Bureau partners with Neighborhood Services to improve properties located in the North Starr King HAP area.









## Central RDA Blight Removal Programs

- 10 Commercial Corridors
- 7 Community Code Enforcement (CCE) Neighborhoods
- Home Improvement Rebates
- 2 Housing Action Plan (HAP) Areas

## Central RDA Commercial Corridor Blight Removal Program Code Enforcement

### Redevelopment Agency funded corridors:

- 10<sup>th</sup> Street
- Pacific Coast Highway
- Willow Street

### Other corridors within the Central Redevelopment Area:

- 4<sup>th</sup> Street
- 7<sup>th</sup> Street
- Anaheim Street
- Atlantic Avenue
- Long Beach Blvd
- Pacific Avenue
- Pine Avenue



## Central RDA Commercial Corridor Blight Removal Program

### Code Enforcement

Code Enforcement results since 2004

Number of Cases Opened – 3,392

Number of Cases Closed – 3,042

Staff continues to review all corridors, meet with RDA staff to ensure desired results are being achieved, stay in communication with business owners.

## Central RDA Commercial Corridor Blight Removal Program

### Commercial Improvement Rebate

The Commercial Improvement Rebate Program provides rebates to assist in the improvement of commercial properties located on targeted corridors.

- \$766,326 in CDBG funds - to 403 business and property owners for exterior property improvements along the corridors.



## Central RDA Commercial Corridor Blight Removal Program

### Maintenance Efforts

#### Program components:

- Survey commercial corridors in Central Long Beach
- Remove illegal signs and/or refer illegal signs to Code Enforcement
- Report instances of graffiti and abandoned shopping carts

#### Since October, 2008:

- 3,300 Illegal Signs have been removed from the public right of way
- 16,561 instances of graffiti removed

## 1440 E 7<sup>th</sup> Street



Before

After





## 3000 E Anaheim Street



Before



After

## 1710 E Pacific Coast Hwy



Before



After



## 2900 E Anaheim Street



Before



After

## 1380 Cherry Avenue



Before



After



## Central RDA Community Code Enforcement (CCE) Program

### Redevelopment Agency funded Community Code Enforcement Areas

- Hellman
- South Wrigley

### Other Community Code Enforcement Areas within the Central Redevelopment Area

- Alamos Beach
- Burnett / Butler
- Willmore
- Saint Anthony
- Wrigley

## Central RDA Community Code Enforcement (CCE) Program

Since 2004, the Community Code Enforcement Program has:

- Held 242 Community Meetings
- Opened 10,067 Cases
- Closed 8,998 Cases



## Central Long Beach Neighborhood Home Improvement Rebate

- 246 Home Improvement Rebates (\$458,778)
- 44 Security Lighting (\$28,843)
- 67 Security Lock (\$15,985)
- 38 Tool Rental (\$9,606)

## Central RDA Neighborhood Blight Removal Program

### Code Enforcement

#### Additional CDBG Funded Blight Removal Programs

- Washington
- MacArthur Park/Whittier School
- St. Mary's

Since 2004, Code Enforcement has:

- Opened 4,671 Cases
- Closed 4,155 Cases



## Central Long Beach Neighborhood Cleanups

Since October 2008, there have been **22** cleanups in Central RDA neighborhoods resulting in the removal of over **198 tons** of trash, debris and discarded items in the neighborhood streets and alleys.

### 2095 Maine Avenue



Before

After





## 2891 Maine Avenue

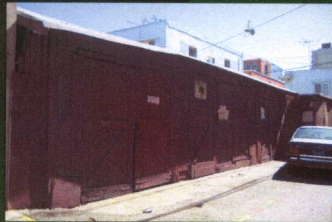


Before

After

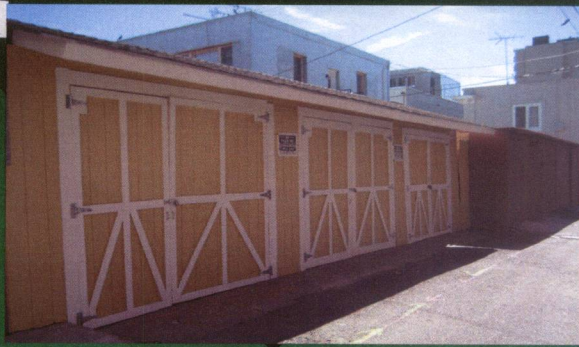


## 1155 Pine Avenue



Before

After









## 224 W 14<sup>th</sup> Street

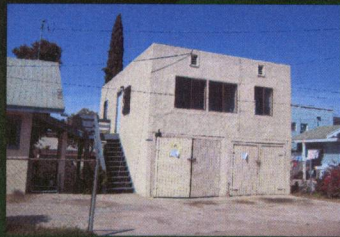


Before

After

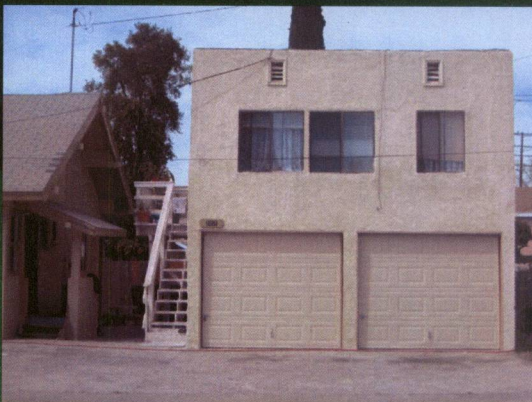


## 1602 Pine Avenue



Before

After





# 1265 Chestnut Avenue

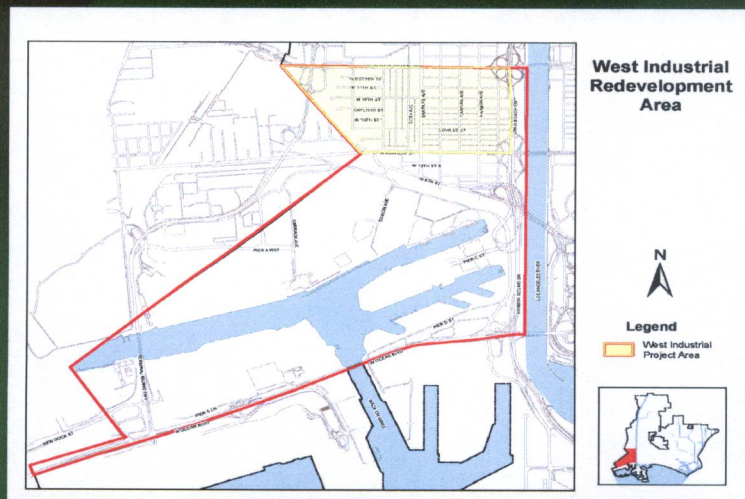


Before



After

# WEST INDUSTRIAL Redevelopment Area





## West Industrial RDA Blight Removal Program

### Code Enforcement Efforts

Code Enforcement staff:

- survey the industrial businesses
- inform business and property owners about need for improvement
- offer resources to assist in improvements
- work closely with RDA staff
- issue citations when necessary

## West Industrial RDA Blight Removal Program

### Code Enforcement Efforts

Code Enforcement results since 2004:

- Opened 354 cases
- Closed 202 cases



## West Industrial RDA Blight Removal Program

### Commercial Improvement Rebate

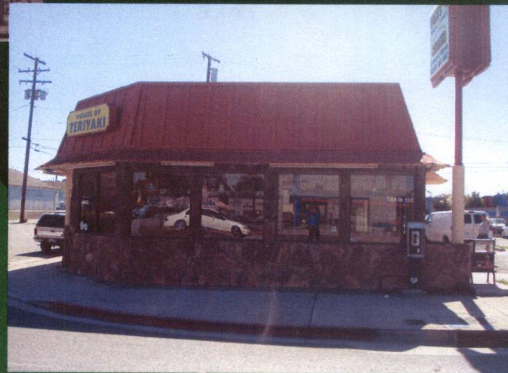
The Commercial Improvement Rebate Program provides rebates to assist in the improvement of commercial properties located on targeted corridors.

- \$69,613 in Redevelopment funds have been paid to 36 business and property owners for exterior property improvements in the project area.
- Property owners invested \$29,690 in private funds for property improvements

## 1600 W Pacific Coast Hwy



Before



After

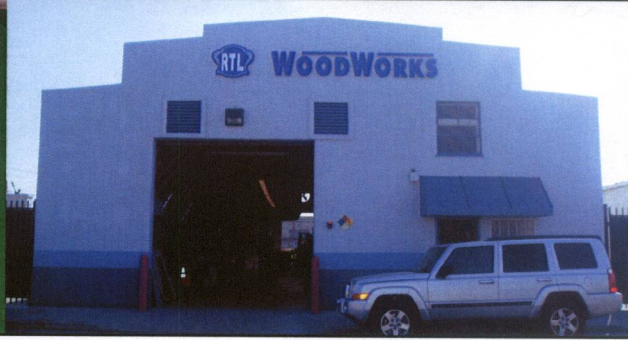


## 1660 Hayes Avenue



Before

After



## 1581 Santa Fe Avenue



Before

After

