



CITY OF LONG BEACH

DEPARTMENT OF PUBLIC WORKS

C-9
REVISED

333 WEST OCEAN BOULEVARD • LONG BEACH, CA 90802 • (562) 570-6383 • FAX (562) 570-6012

February 14, 2017

HONORABLE MAYOR AND CITY COUNCIL
City of Long Beach
California

RECOMMENDATION:

Authorize the City Manager, or designee, to execute a contract with Southern California Edison (SCE) to participate in the Charge Ready Program, which will provide the electric infrastructure required to install 13 electric vehicle charging stations at the City-owned City Place parking garage C; and,

Authorize the City Manager, or designee, to grant an easement deed to SCE at parking garage C for the installation of a new electrical meter. (District 1)

DISCUSSION

In January 2016, SCE approached the City of Long Beach (City) to participate in its Charge Ready Program (Program). The Program aims to reduce vehicle emissions by partnering with local government agencies, businesses and multi-family dwellings to provide electric vehicle (EV) charging stations. As many as 1,500 EV charging stations will be installed during the pilot phase, with the possibility to expand the Program and install approximately 30,000 chargers in SCE's service area.

Through the Program, SCE is responsible for the electric infrastructure required for installing new EV chargers, including design, construction, permit, inspection, and project management costs. The electrical infrastructure is a significant up-front cost that is required when installing new EV charging stations. The City will receive electrical infrastructure through the Program valued in excess of \$150,000, which represents significant avoided costs for the City. Once the infrastructure is in place, the City is responsible for purchasing and installing EV charging stations that are eligible under the Program. SCE will offset a portion of the costs for the EV chargers through a rebate program. Once the EV chargers are in place, SCE will collect non-personally identifiable end-user data including charge durations, rates, costs, and loads to monitor program performance.

The City has selected City Place parking garage C as the pilot program site. The parking garage is located in Downtown Long Beach between 3rd and 4th Streets and near Pine Avenue and Waite Court. City Place garage C services businesses and residences on Pine Avenue and City Place. It is anticipated that the Program will be self-supporting through user fees. Over the past several years, there has been an increase in the number of parking customers at garage C who own electric or plug-in hybrid vehicles. The demand for the chargers is expected to increase even more as the adjacent retail spaces are developed.

HONORABLE MAYOR AND CITY COUNCIL

February 14, 2017

Page 2

SCE will install a new electric meter to service the charging stations. An H-frame meter will be placed on the exterior wall of the garage, within a stair area on the west elevation of the building (Exhibit A). The meter will not impede stair access. The easement agreement will require SCE to maintain, operate and repair their electrical equipment.

This matter was reviewed by Deputy City Attorney Linda T. Vu and by Budget Analysis Officer Julissa Jose-Murray on January 27, 2017.

SUSTAINABILITY

Installing EV charging stations in publicly-owned parking facilities advances the City's goals of reducing greenhouse emissions by facilitating the use of alternative fuel vehicles.

TIMING CONSIDERATIONS

City Council action is requested on February 14, 2017, to ensure the contract is in place expeditiously.

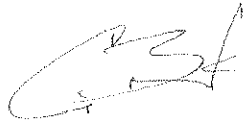
FISCAL IMPACT

Under the proposed agreement, SCE will cover all costs associated with the required electric infrastructure. This represents an estimated value in excess of \$150,000. The City will procure and install the charging stations estimated at \$39,000, with the Program reimbursing the City for 25 percent of the cost through a rebate. This project is supported by FY 17 Measure A funds budgeted in Capital Projects Fund (CP) in the Public Works Department (PW). The annual cost for network service and maintenance is estimated at \$7,200, offset by anticipated user fee revenues. These costs are not currently funded and will be addressed as part of the FY 18 budget process. There is no local job impact associated with this recommendation.

SUGGESTED ACTION:

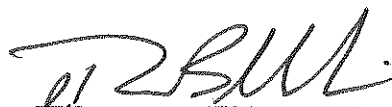
Approve recommendation.

Respectfully submitted,



CRAIG A. BECK
DIRECTOR OF PUBLIC WORKS

APPROVED:



PATRICK H. WEST
CITY MANAGER

CB:SC:EL:TR:NV:jc
P:\CL\SCE Charge Ready Program CL.doc

ATTACHMENT: EXHIBIT A – EASEMENT LOCATION

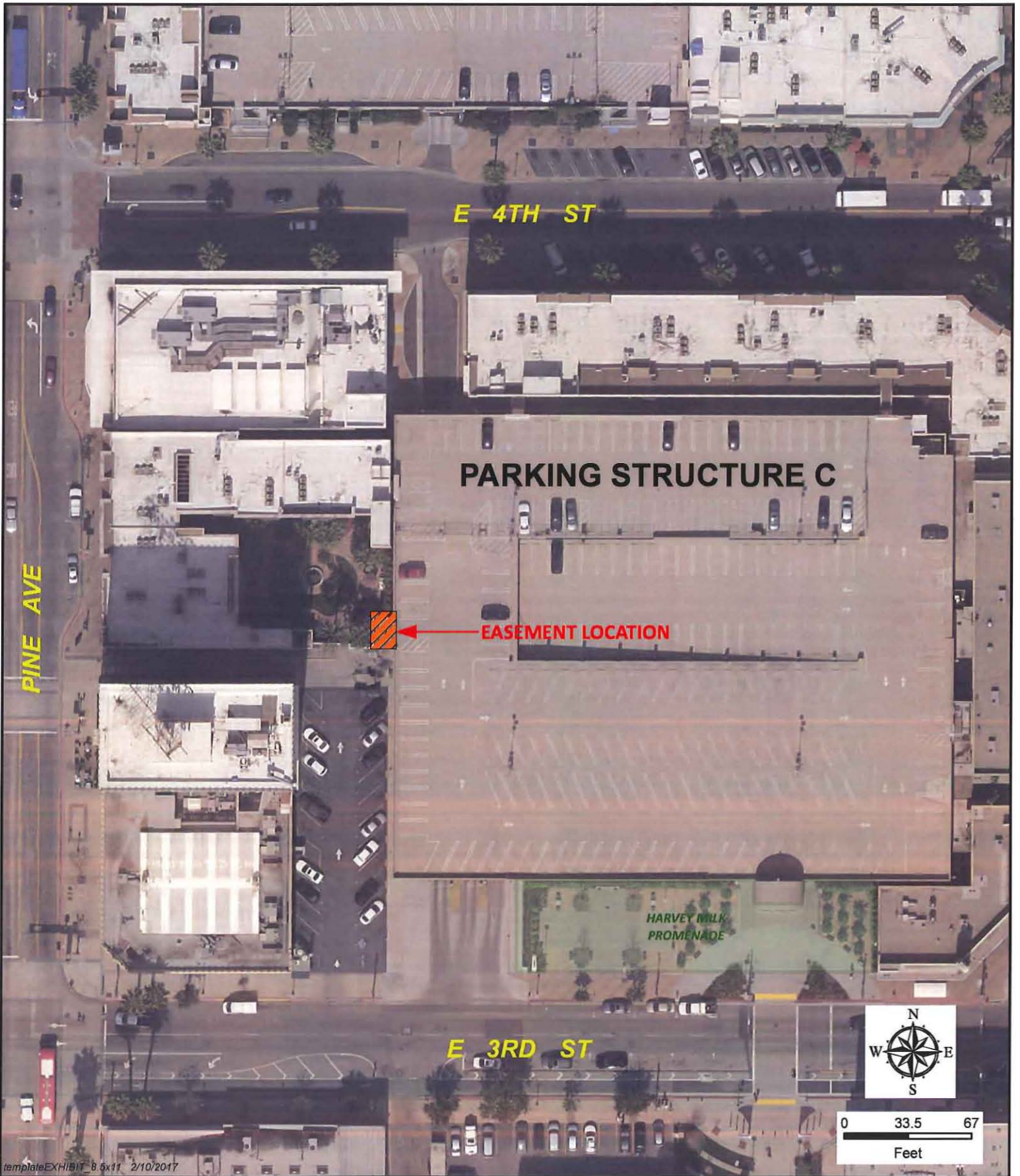


EXHIBIT A
SCE Charge Ready Program Easement Location