

Richard D. Steinke
Port Executive Director



Middle Harbor Redevelopment Project Final EIR/EIS

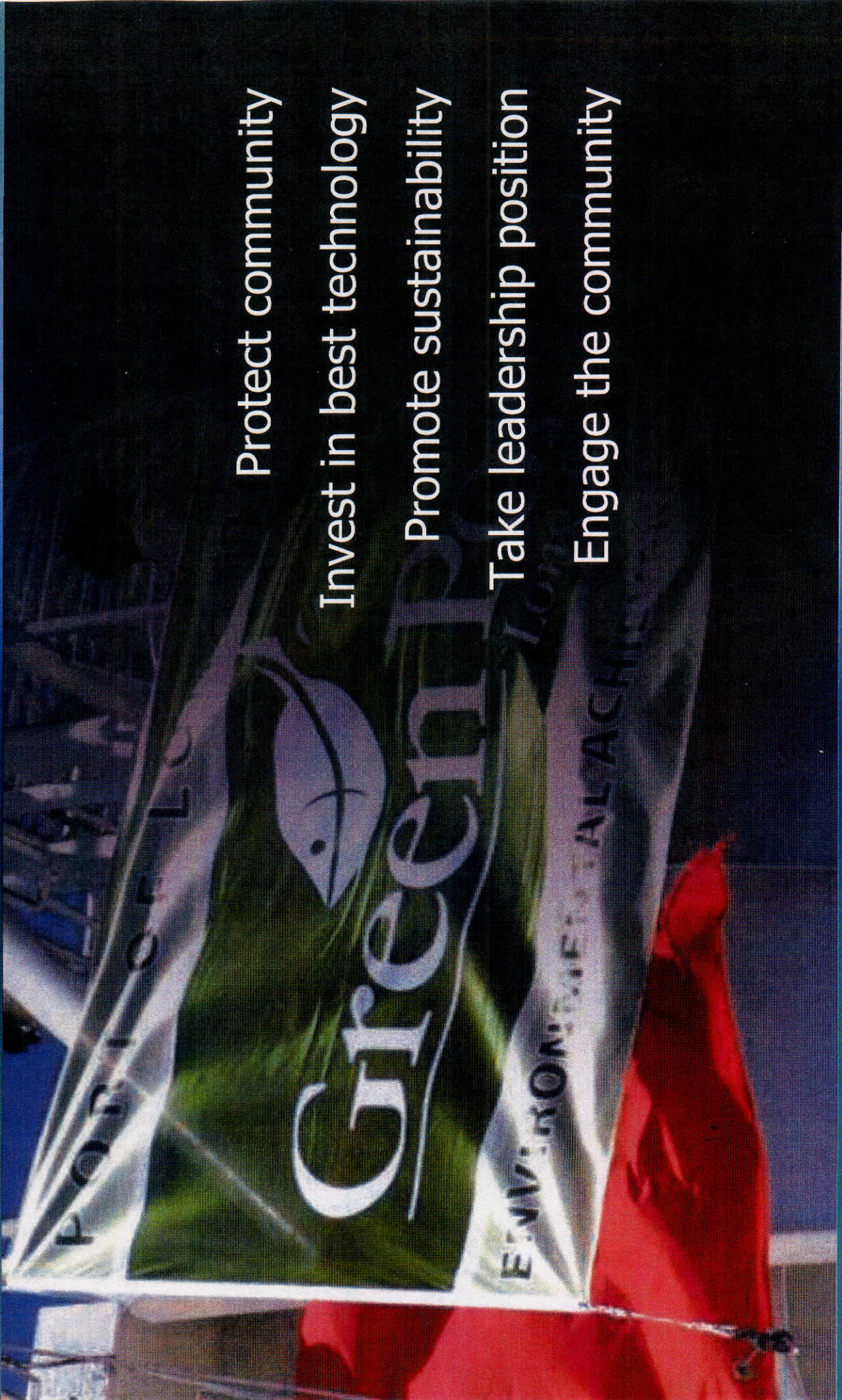
Board of Harbor Commissioners

April 13, 2009

Green Port Policy



The Port of
LONG BEACH



Protect community

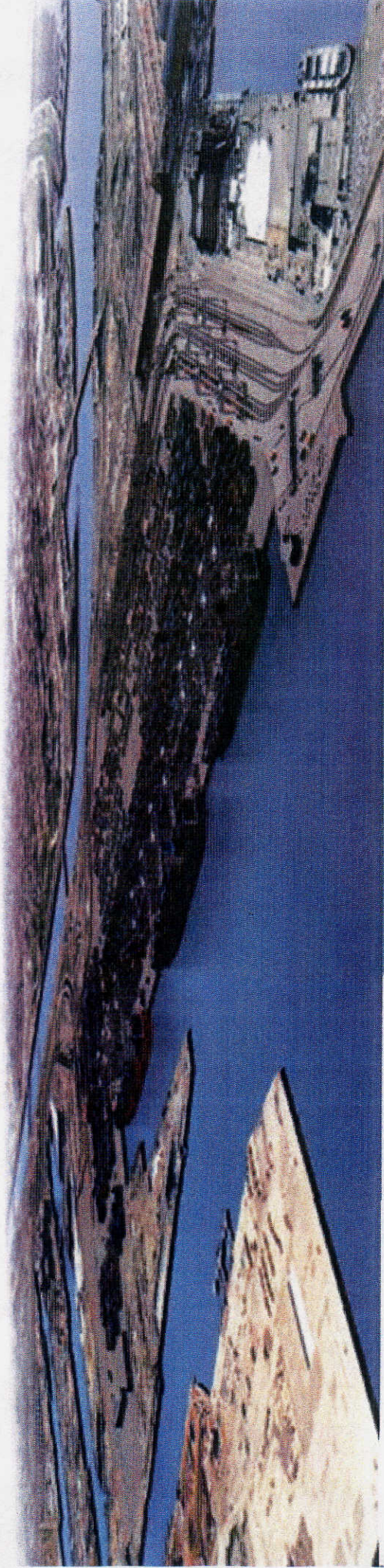
Invest in best technology

Promote sustainability

Take leadership position

Engage the community

Robert Kanter, Ph.D. Port
Managing Director,
Environmental Affairs & Planning

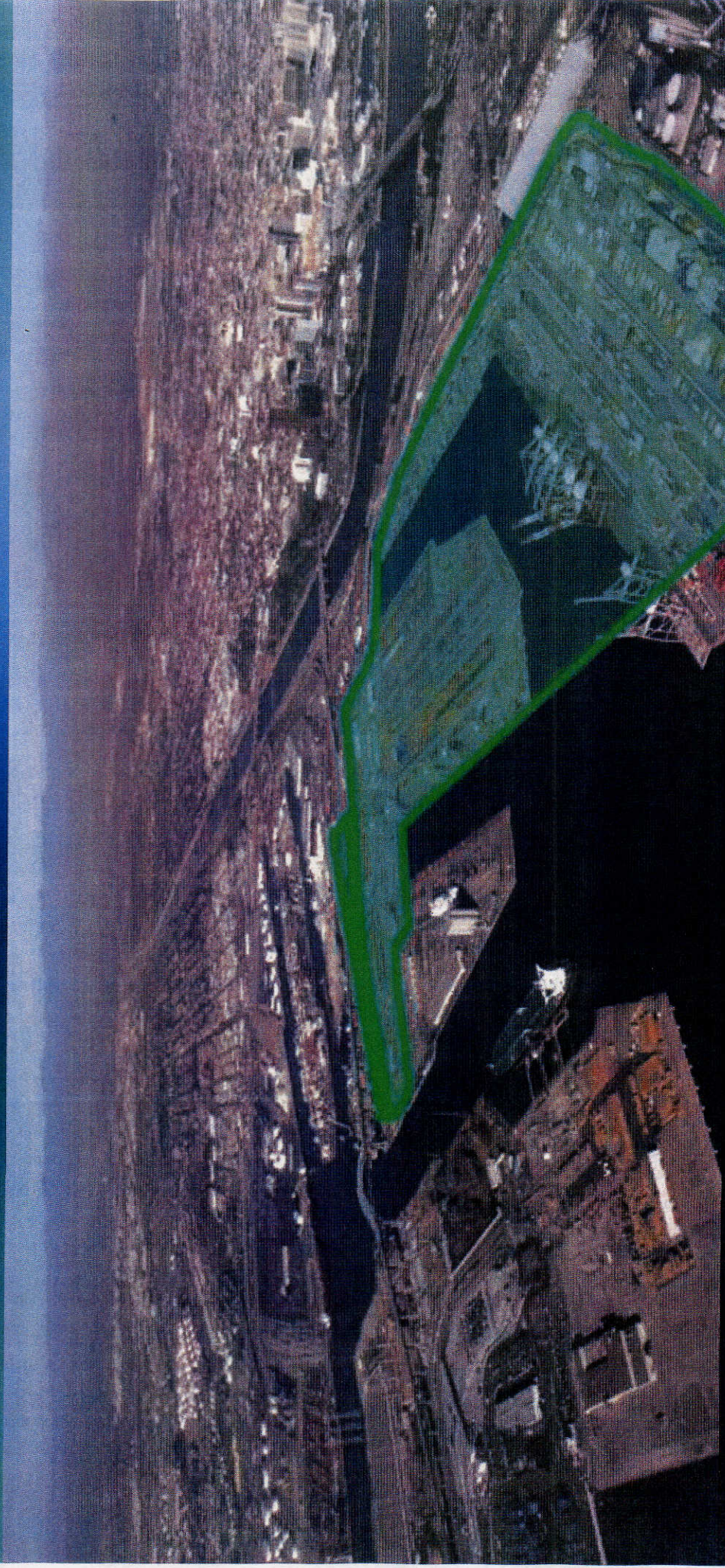


Middle Harbor Redevelopment Project Final EIR/EIS

Board of Harbor Commissioners

April 13, 2009

The proposed project



Redevelop two older facilities to keep the Port competitive, support the economy, and be a responsible environmental steward

Environmental review

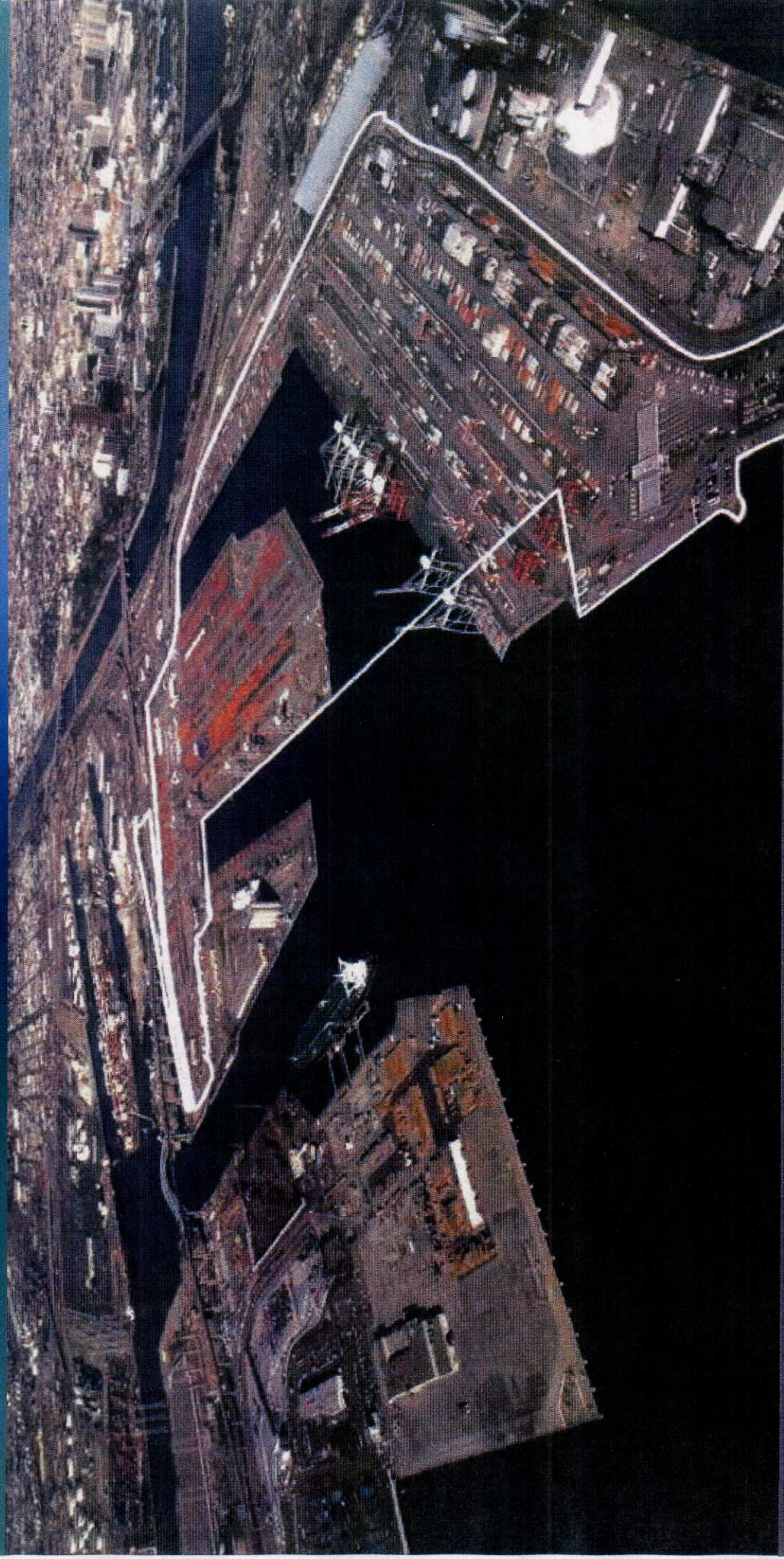


Seeking broad community input and participation

The Middle Harbor



The Port of
LONG BEACH



California United Terminals, on the north, and Long
Beach Container Terminal, on the south

Existing Middle Harbor terminals



The Port of
LONG BEACH



California United terminals (CUT) 170-acre container/bulk terminal at Piers D and E

Existing Middle Harbor terminals



The Port of
LONG BEACH



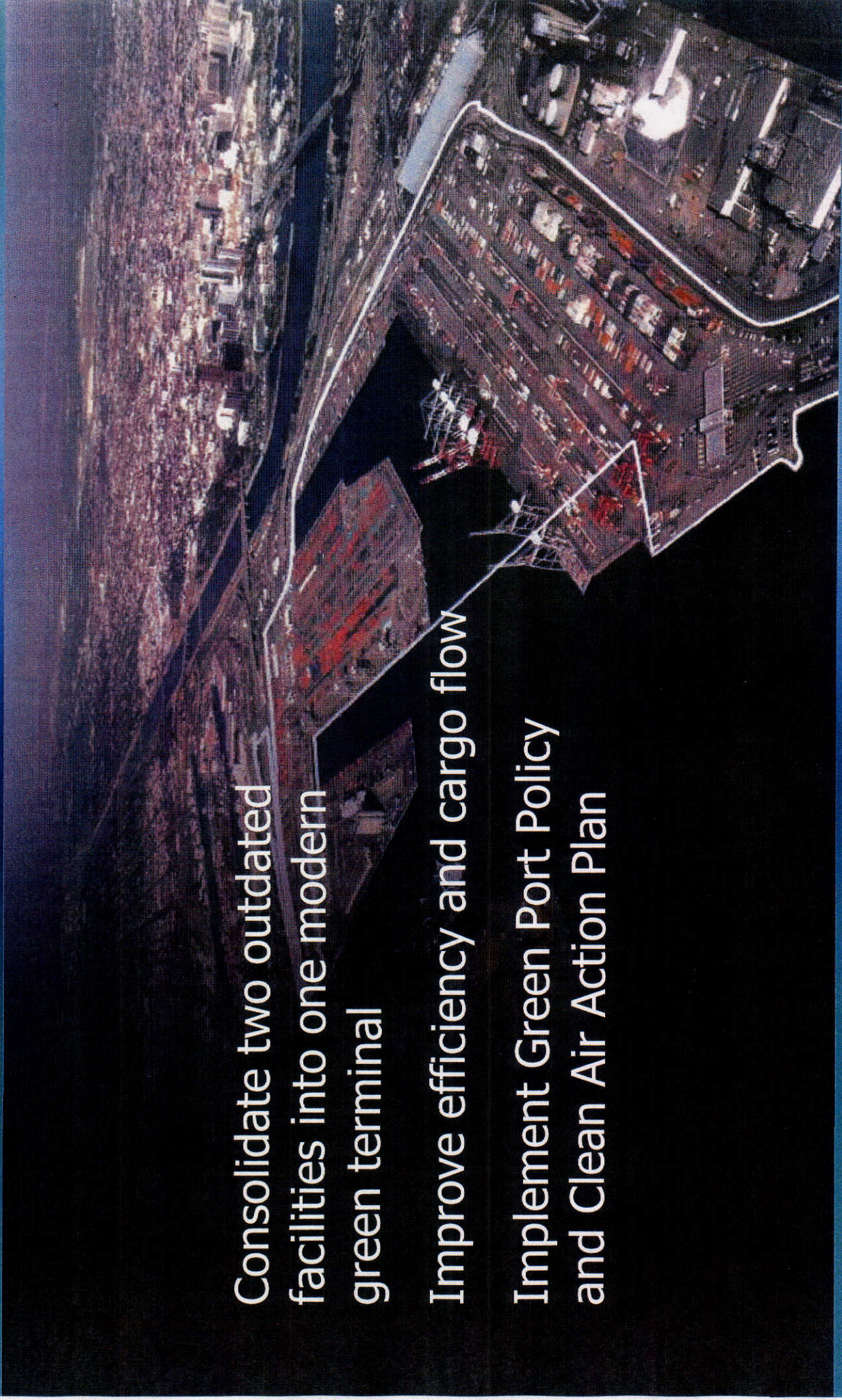
Long Beach Container Terminal (LBCT) 101-acre
container terminal at Pier F

Redevelopment objectives

Consolidate two outdated facilities into one modern green terminal

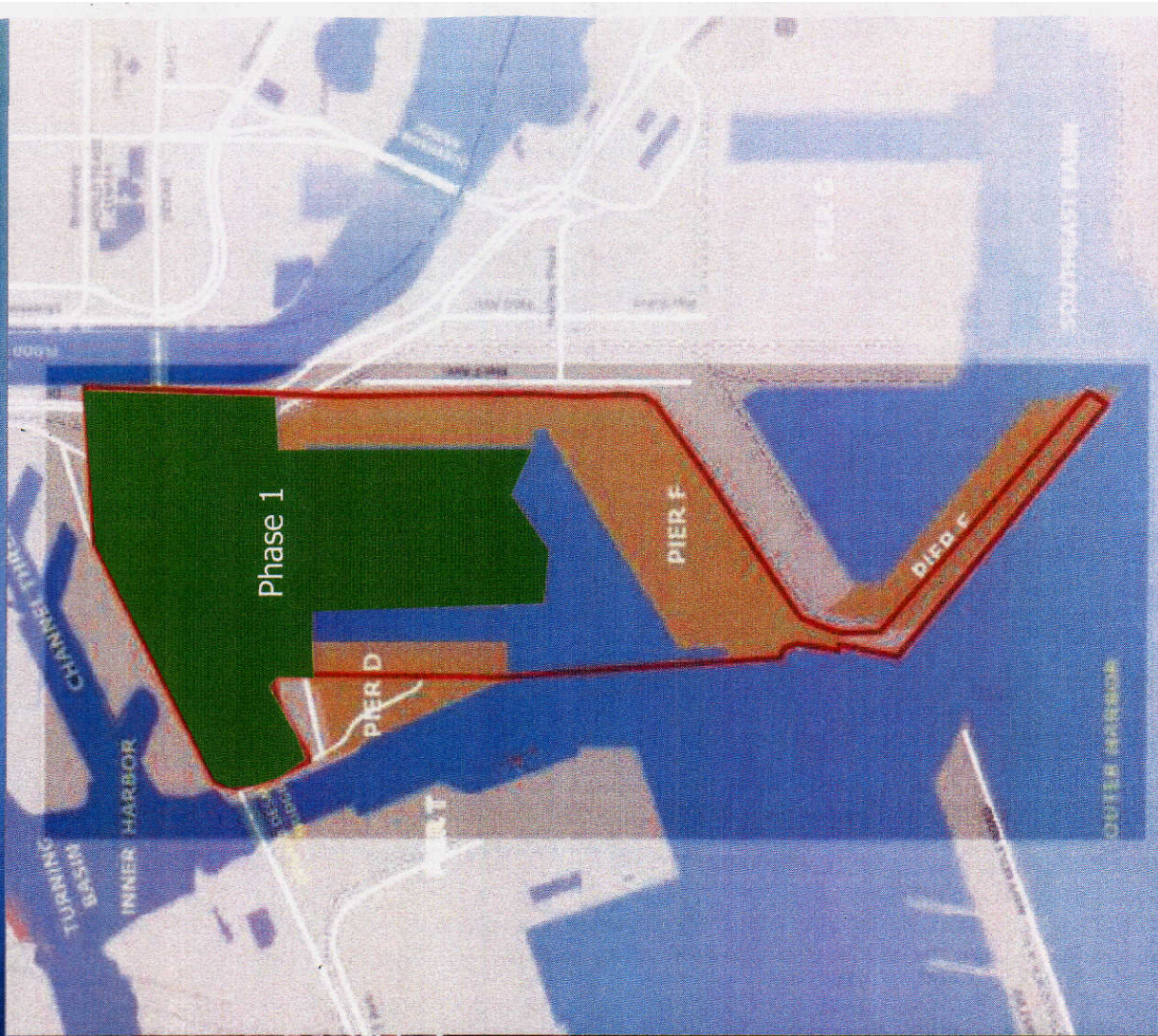
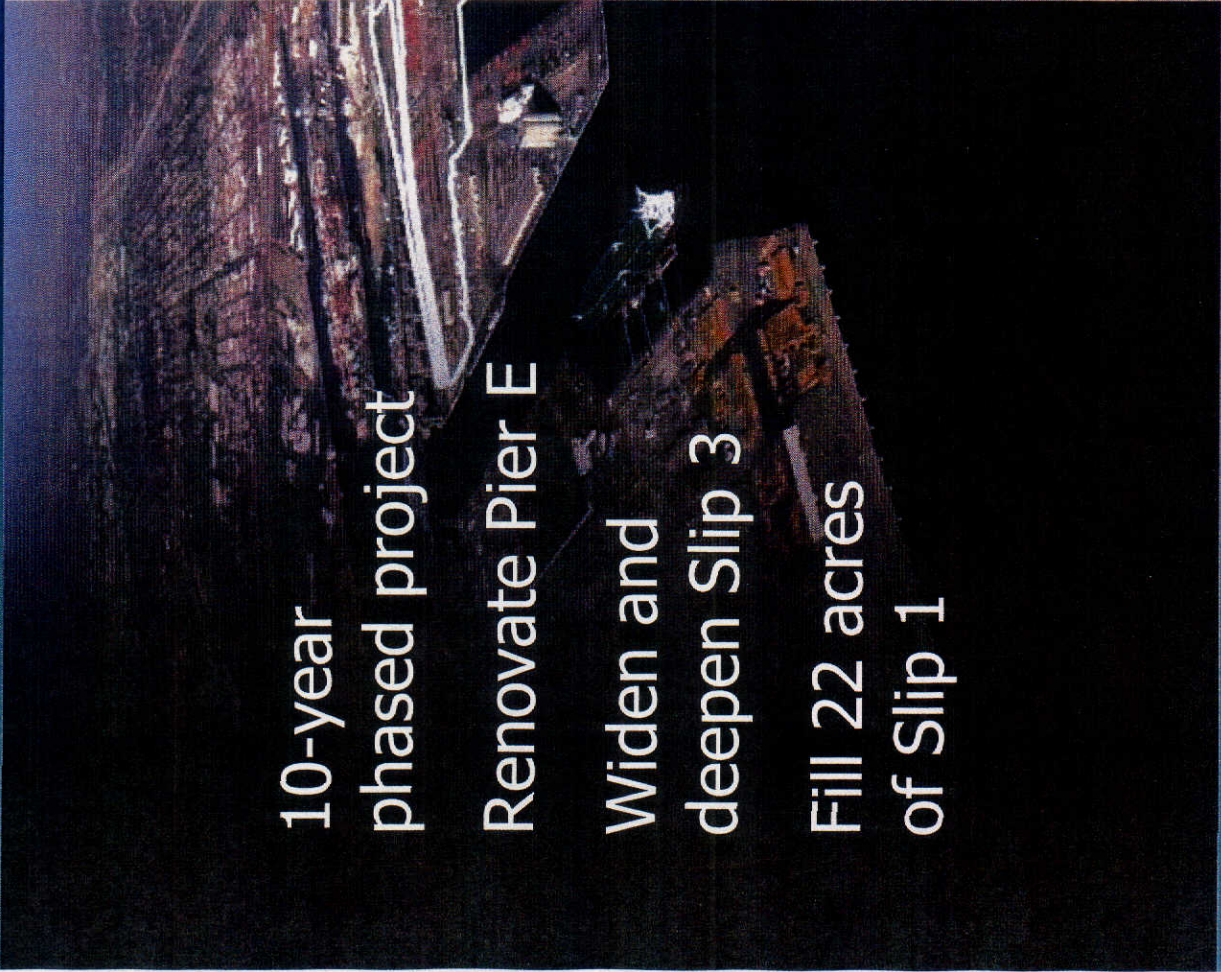
Improve efficiency and cargo flow

Implement Green Port Policy and Clean Air Action Plan



Phase 1 development

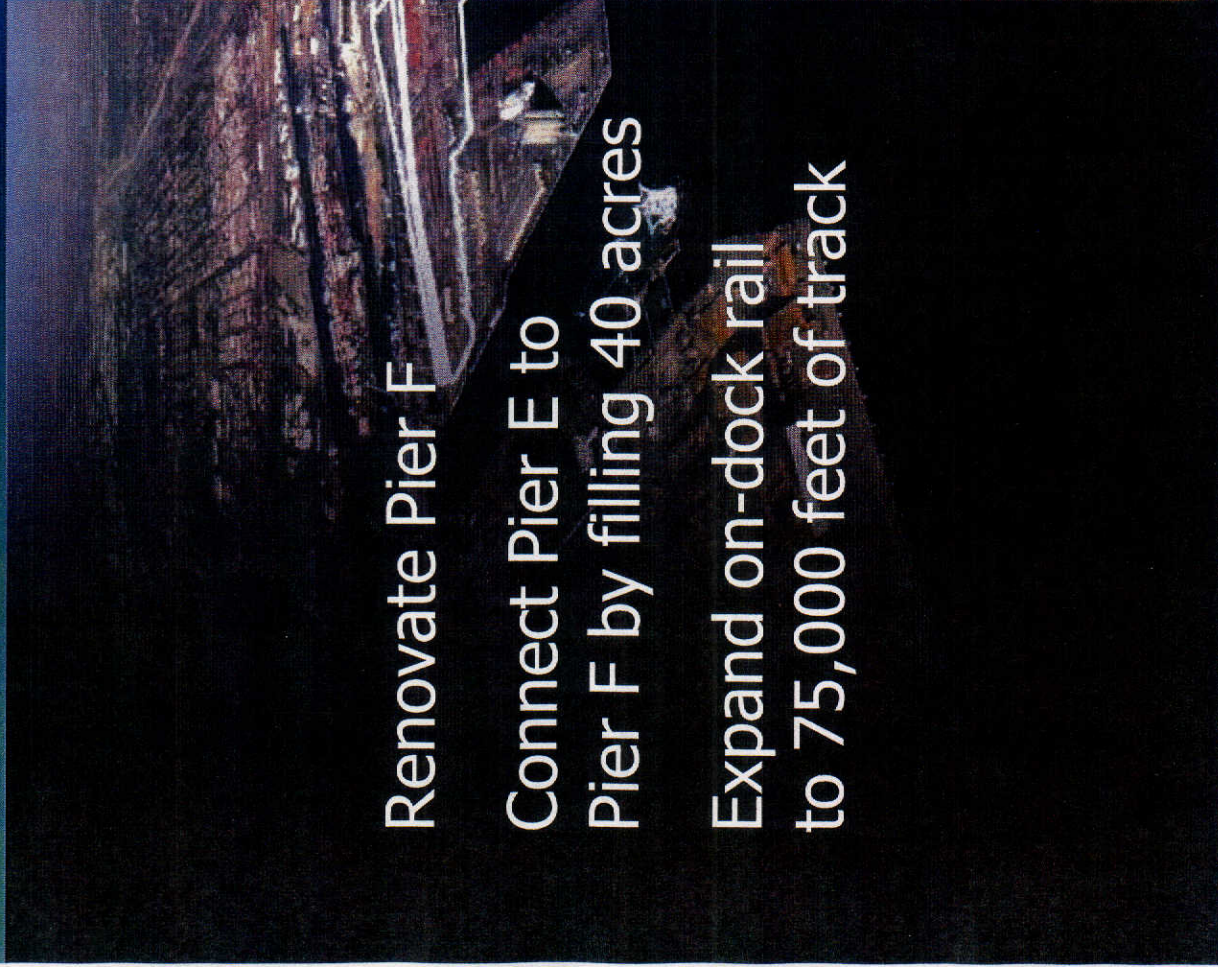
10-year
phased project
Renovate Pier E
Widen and
deepen Slip 3
Fill 22 acres
of Slip 1



Phase 2 development



The Port of
LONG BEACH



Renovate Pier F

Connect Pier E to
Pier F by filling 40 acres

Expand on-dock rail
to 75,000 feet of track



On-dock
rail

PIER E

Pier F Ave.

Harbor

Pier D Ave.

Pier A Ave.

Consolidated 345-acre terminal



Moving into the 21st century



Existing terminals, combined*

Acres: **294**

Millions of TEUs: **1.2**

Trains per year: **138**

Terminal employees: **625**

Baseline year, 2005 *

New terminal in 2025

345: Acres

3.3: Million TEUs

2,098: Trains per year

2,961: Terminal employees

Mitigation feasibility



Economic

Environmental

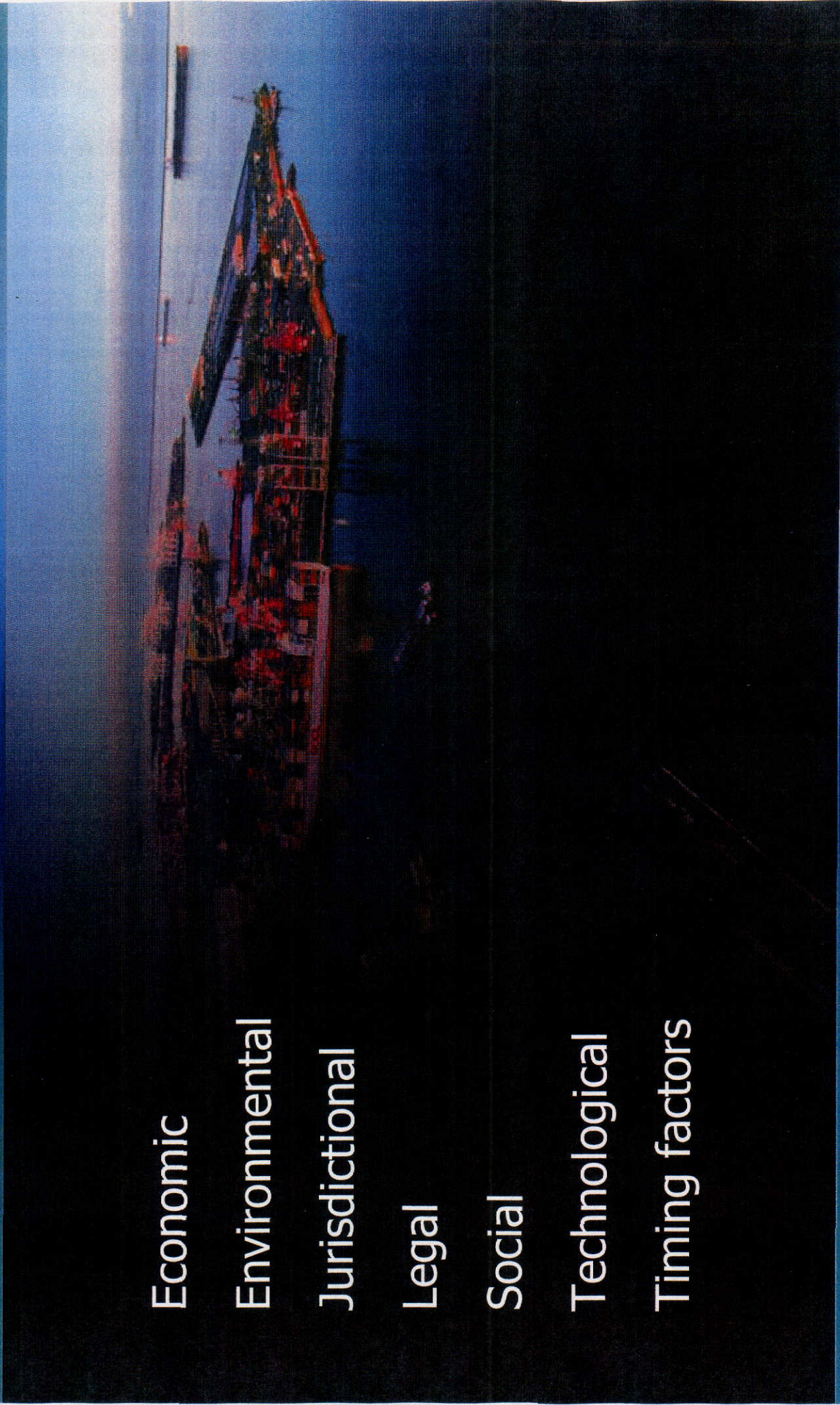
Jurisdictional

Legal

Social

Technological

Timing factors



Categories evaluated for impacts



Geology, groundwater,
and soils

Air Quality and Health Risk

Hydrology and Water Quality

Biota and Habitats

Ground Transportation

Vessel Transportation

Land Use

Public Services/ Health and
Safety

Noise

Hazards and Hazardous
Materials

Recreation

Socioeconomics

Utilities and Service Systems

Cultural Resources

Environmental Justice

and Aesthetics/Visual
Resources

Mitigating construction impacts



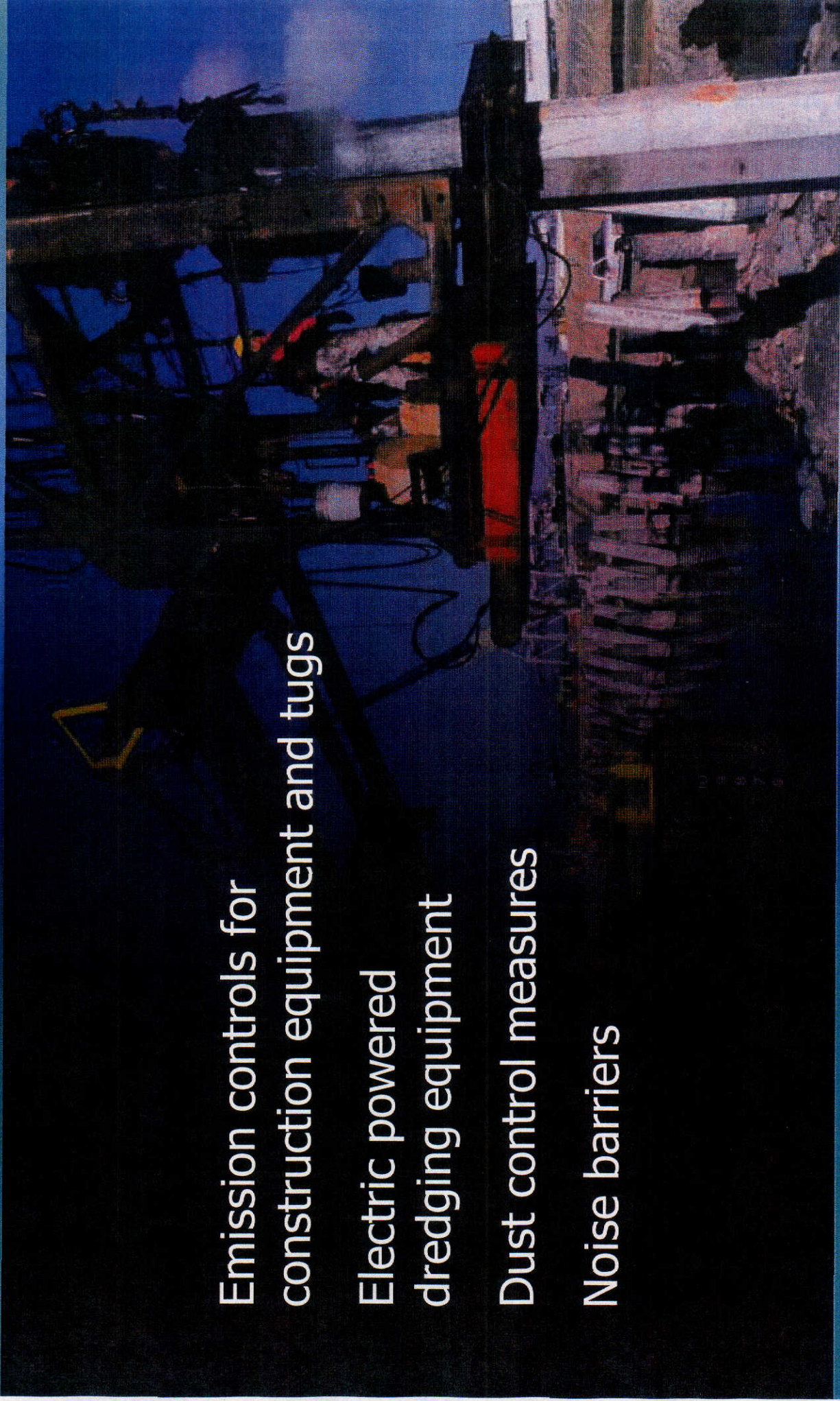
The Port of
LONG BEACH

Emission controls for
construction equipment and tugs

Electric powered
dredging equipment

Dust control measures

Noise barriers



Overriding considerations

We are asking the Board to find that the economic, legal, social and technological benefits of the project outweigh its unavoidable, residual environmental impacts.



Mitigating operational impacts



Clean Air Action Plan Strategies:

Shoreside power for vessels

Vessel speed reduction

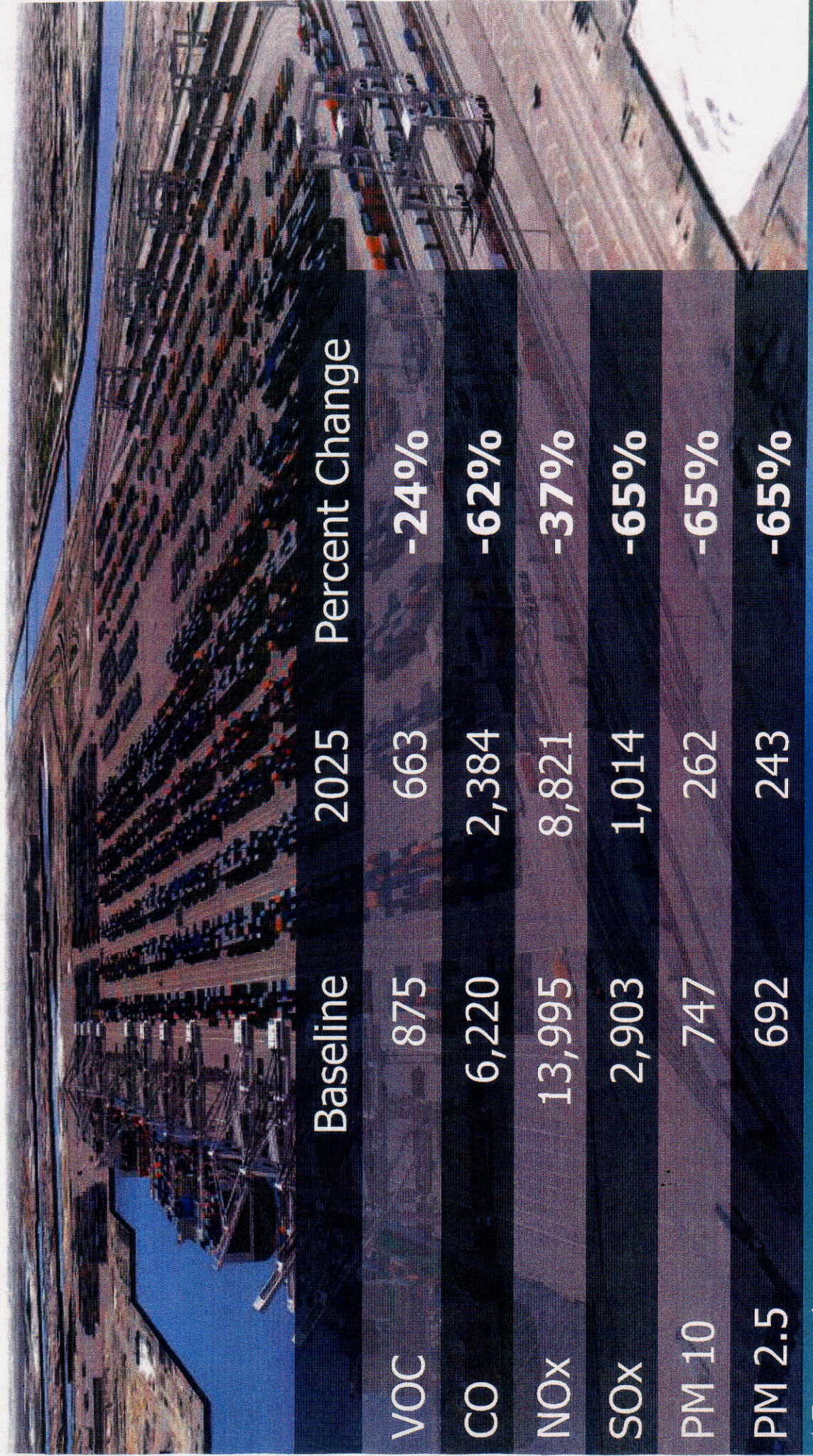
Low-sulfur fuels

Clean cargo handling equipment

Clean trucks

Clean railyard operations

Daily reduction in air pollution



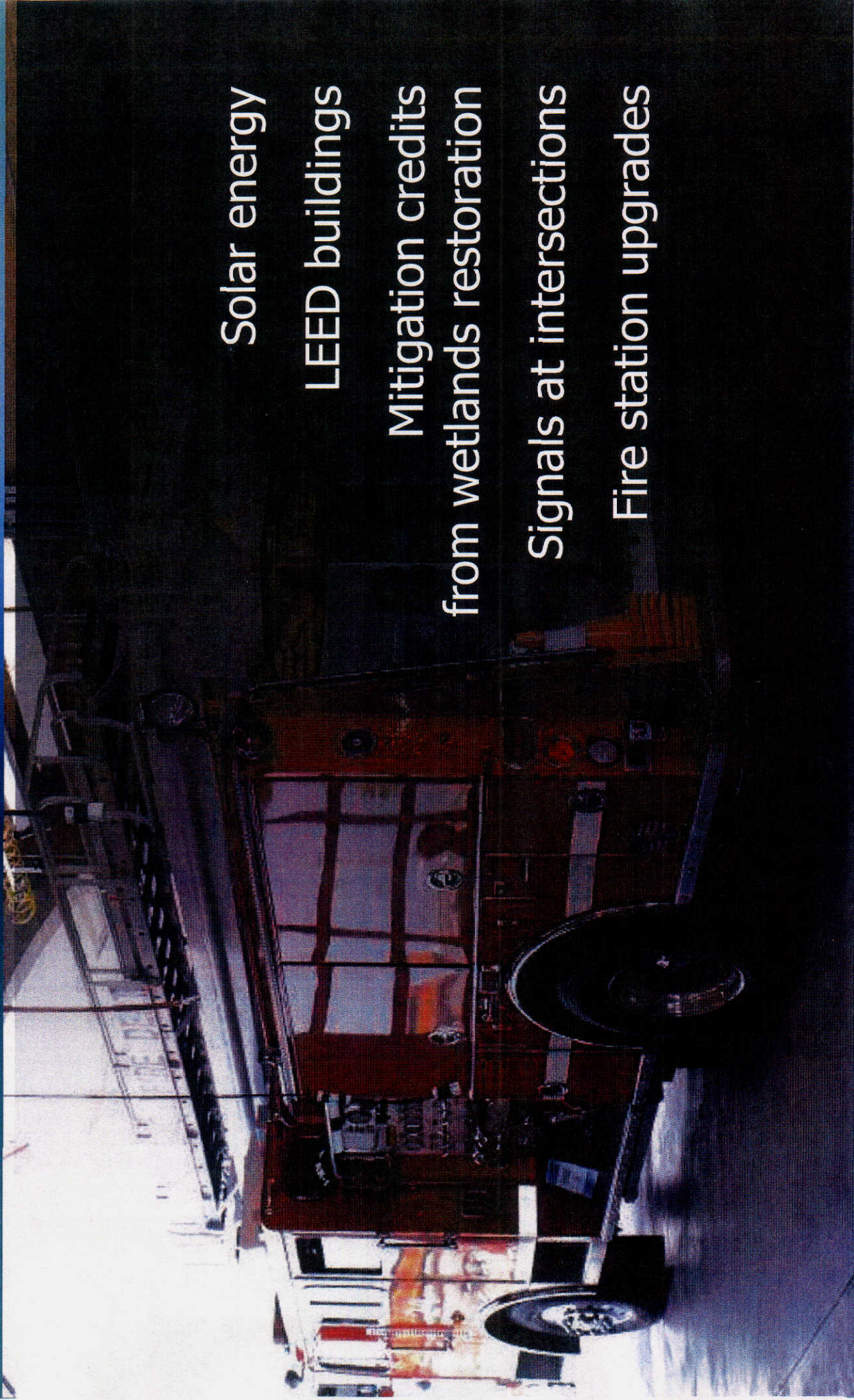
	Baseline	2025	Percent Change
VOC	875	663	-24%
CO	6,220	2,384	-62%
NOx	13,995	8,821	-37%
SOx	2,903	1,014	-65%
PM 10	747	262	-65%
PM 2.5	692	243	-65%

* Tons per day

More mitigation measures



The Port of
LONG BEACH



Solar energy

LEED buildings

Mitigation credits
from wetlands restoration

Signals at intersections

Fire station upgrades

Protection from air pollution

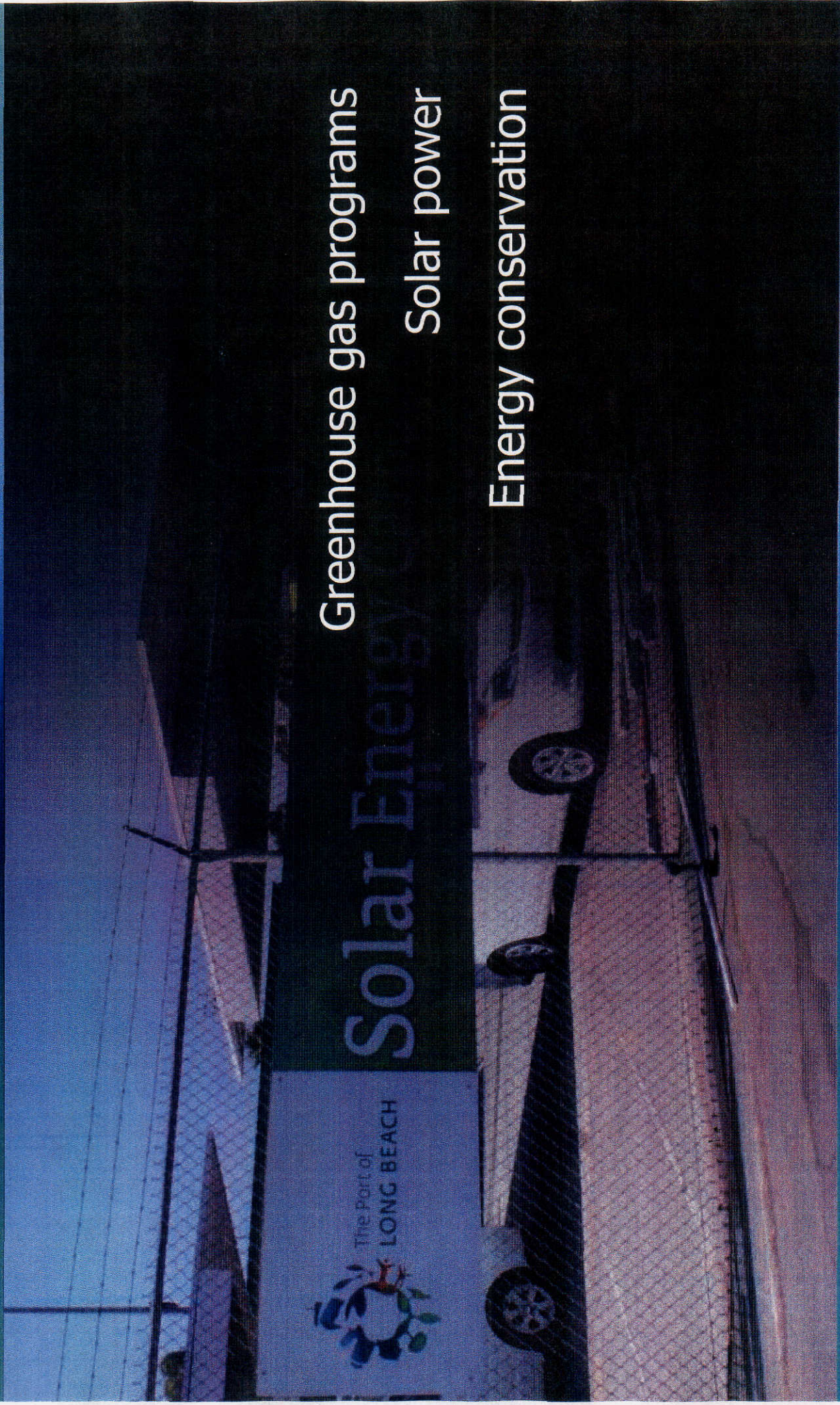


Children and seniors

School and daycare
upgrades such as
air conditioning

Healthcare programs

Global warming solutions



Greenhouse gas programs

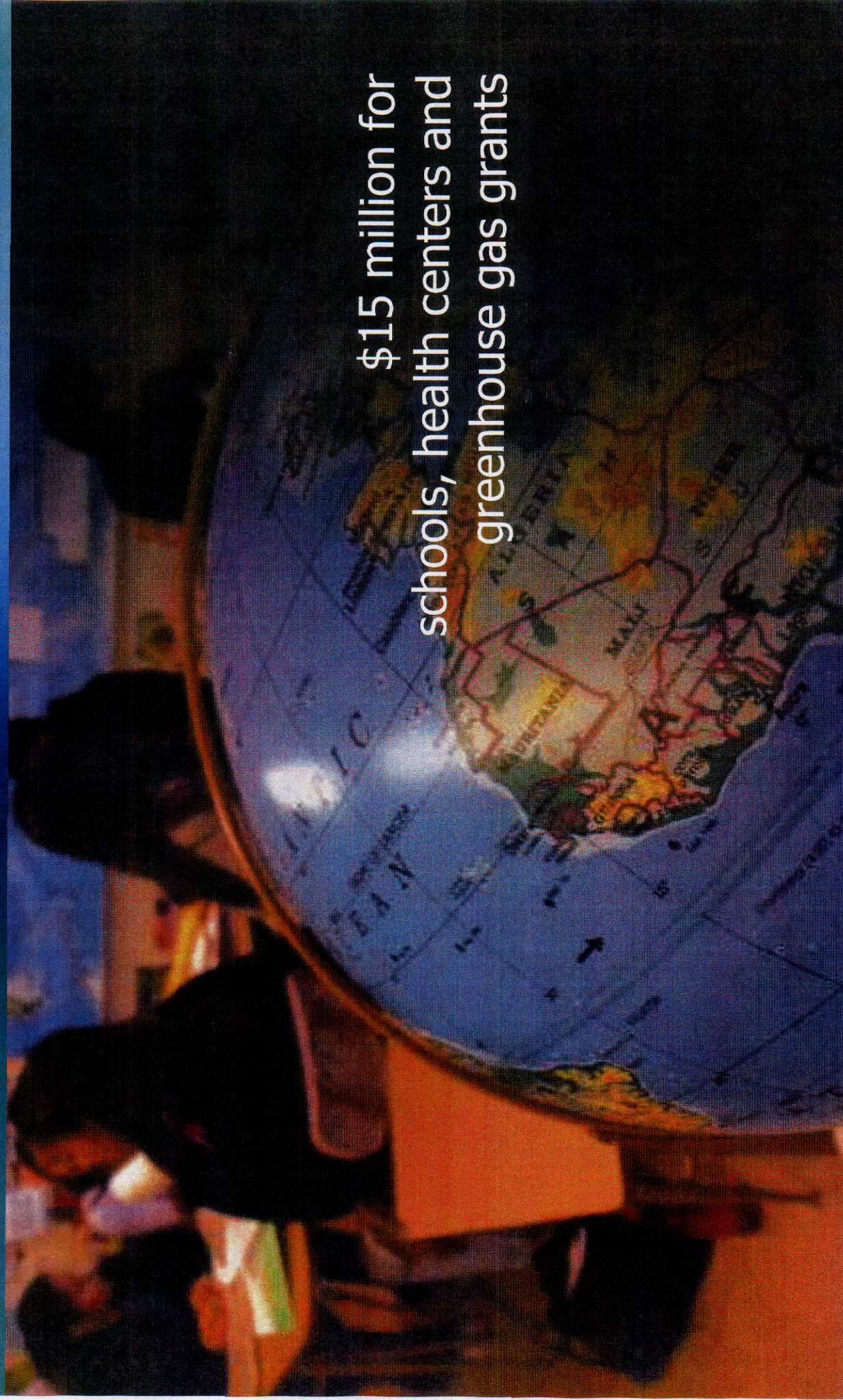
Solar power

Energy conservation

Air, greenhouse grant programs



The Port of
LONG BEACH

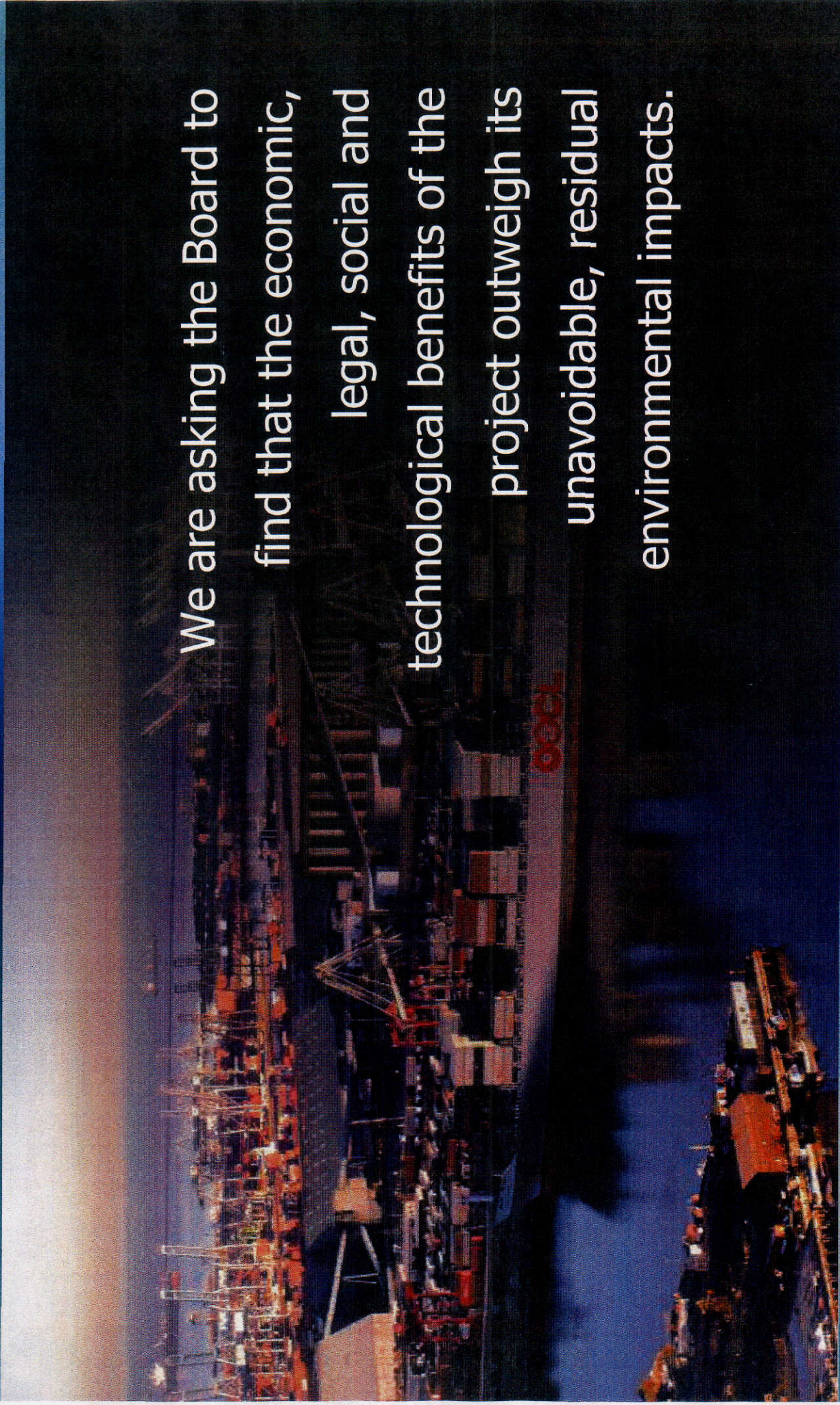


\$15 million for
schools, health centers and
greenhouse gas grants

Overriding considerations



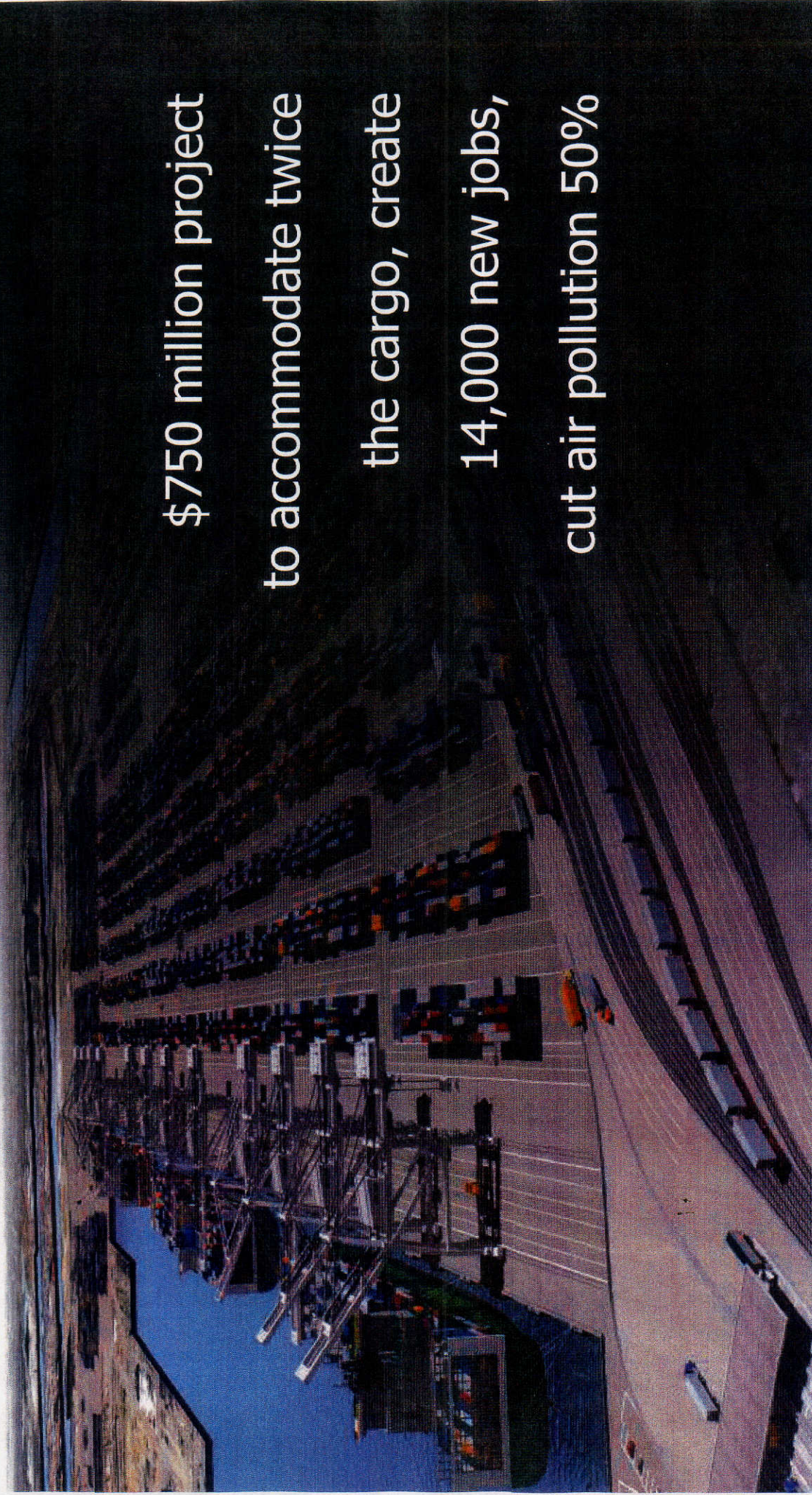
We are asking the Board to find that the economic, legal, social and technological benefits of the project outweigh its unavoidable, residual environmental impacts.



A new Middle Harbor



The Port of
LONG BEACH



\$750 million project
to accommodate twice
the cargo, create
14,000 new jobs,
cut air pollution 50%