

ORDINANCE NO. ORD-06-0017

AN ORDINANCE OF THE CITY COUNCIL OF THE CITY OF LONG BEACH AMENDING THE USE DISTRICT MAP OF THE CITY OF LONG BEACH AS SAID MAP HAS BEEN ESTABLISHED AND AMENDED BY AMENDING PORTIONS OF PART 16 OF SAID MAP FROM INSTITUTIONAL (I) TO PARK (P), AND MEDIUM INDUSTRIAL (IM) TO COMMUNITY COMMERCIAL AUTOMOBILE ORIENTED DISTRICT (CCA) AND PARK (P) FOR CITY-OWNED PARCELS ONLY IN THE CITY OF LONG BEACH (RZ-0507-01)

The City Council of the City of Long Beach ordains as follows:

Section 1. Environmental documentation having been prepared, certified, received and considered as required by law, and the City Council hereby finding that the proposed change will not adversely affect the character, livability or appropriate development of the surrounding areas and that the proposed changes are consistent with the goals, objectives and provisions of the General Plan, the official Use District Map of the City of Long Beach, as established and amended, is further amended by amending portions of Part 16 of said Map to from Institutional (I) to Park (P), and Medium Industrial (IM) to Community Commercial Automobile Oriented District (CCA) and Park (P) for City-owned parcels only. Those portions of Part 16 of said map which are amended by this ordinance are depicted on Exhibit "A" which is attached hereto and by this reference made a part of this ordinance and the official Use District Map.

//

//

Robert E. Shannon
City Attorney of Long Beach
333 West Ocean Boulevard
Long Beach, California 90802-4664
Telephone (562) 570-2200

Robert E. Shannon
City Attorney of Long Beach
333 West Ocean Boulevard
Long Beach, California 90802-4664
Telephone (562) 570-2200

1
2
3
4
5
6
7
8
9
10
11
12
13
14
15
16
17
18
19
20
21
22
23
24
25
26
27
28

Sec. 2. All ordinances and parts of ordinances in conflict herewith are hereby repealed.

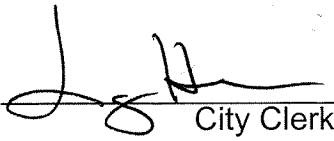
Sec. 3. The City Clerk shall certify to the passage of this ordinance by the City Council and cause it to be posted in three conspicuous places in the City of Long Beach, and it shall take effect on the thirty-first day after it is approved by the Mayor.

I hereby certify that the foregoing ordinance was adopted by the City Council of the City of Long Beach at its meeting of May 2, 2006, by the following vote:

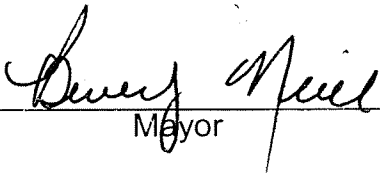
Ayes: Councilmembers: Lowenthal, Colonna, O'Donnell,
Kell, Richardson, Reyes Uranga,
Gabelich, Lerch.

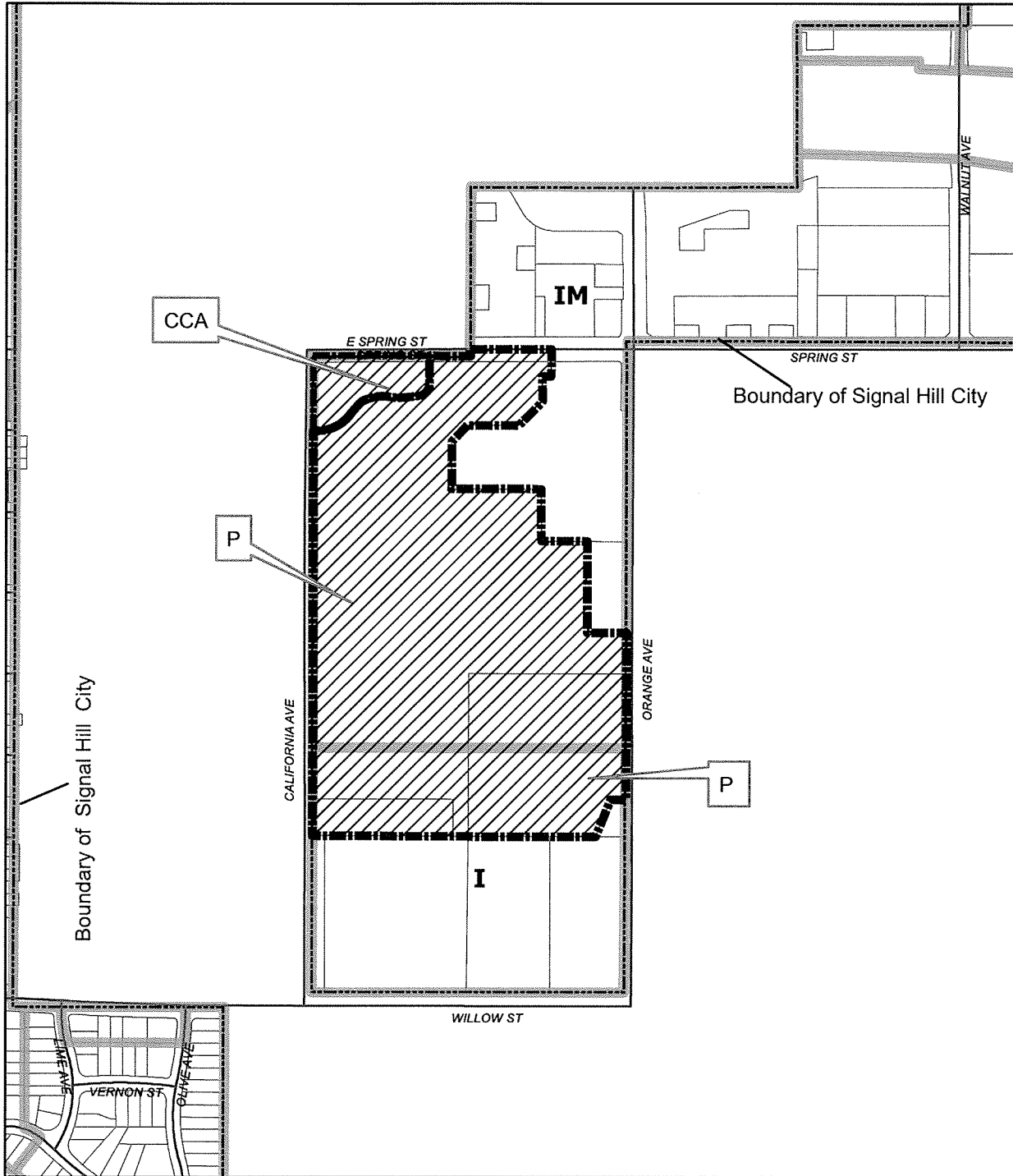
Noes: Councilmembers: None.

Absent: Councilmembers: None.


City Clerk

Approved: 5-4-06


Mayor



Area to be changed from IM to CCA & P and From I to P



PROPOSED
 AMENDMENT TO A PORTION OF PART 16
 OF THE ZONING DISTRICT MAP

REZONING CASE #
 0507-01

EXHIBIT "A"