



Building A Better Long Beach

March 7, 2011

REDEVELOPMENT AGENCY BOARD MEMBERS
City of Long Beach
California

RECOMMENDATION:

Approve and authorize the Executive Director to enter into a contract with Totum Corp in an amount not to exceed \$380,675 to provide construction management services for Craftsman Park, Orizaba Park Community Center and the McBride Park Senior Center in the Central Long Beach Redevelopment Project Area. (Central – Districts 1,4,6)

DISCUSSION

The Central Long Beach Strategic Guide for Development has identified that the Central Redevelopment Project Area is far under-served in terms of open space and park opportunities. To address this need, Redevelopment Agency (Agency) staff has been working collaboratively with the Department of Parks, Recreation and Marine to bring Craftsman Park, the Orizaba Park Community Center and the McBride Park Senior Center Project (Projects) (Exhibit A – Conceptual Renderings) to fruition.

The Projects are now ready to move forward with the development of construction documents, bidding and construction, and are in need of a construction management firm. To that end, staff proposes entering into a contract with Totum Corp to provide construction management services for the Projects. The contract with Totum Corp is necessary in order to ensure efficient and cost-effective delivery of design and construction. Additionally, the McBride Park Senior Center Project is being supported by the 2006 Open Space Bond proceeds, which may not be used to fund administrative expenses.

Totum Corp is a local business with extensive construction experience that provides on-site construction management services. They have successfully managed the construction of the Public Safety Building on Broadway, Fire Station No. 1 Seismic Renovation Project, the construction of the new Mark Twain Library, and are currently managing the construction of the McBride Teen Center. The proposed contract amount of \$380,675 covers construction management services for all three projects to carry each project through the end of construction.

REDEVELOPMENT AGENCY BOARD MEMBERS

March 7, 2011

Page 2 of 2

SUGGESTED ACTION:

Approve recommendation.

Respectfully submitted,



ROBERT M. ZUR SCHMIEDE, AICP
ASSISTANT EXECUTIVE DIRECTOR



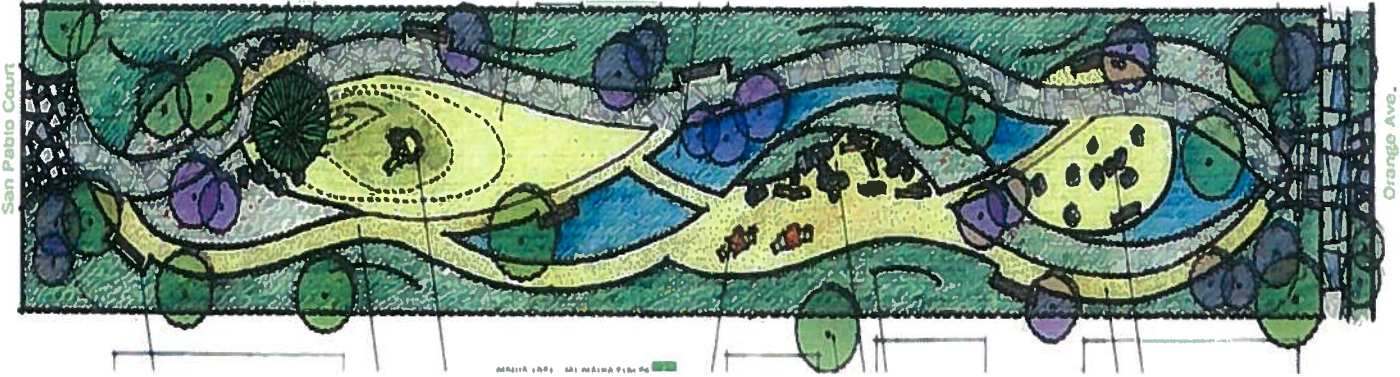
AMY J. BODEK, AICP
EXECUTIVE DIRECTOR

AJB:RMS:DSW:EM

Attachment: Exhibit A – Conceptual Renderings

Conceptual Renderings

Craftsman Park



Orizaba Park Community Center



McBride Park Senior Center

