



CITY OF LONG BEACH

C-27

DEPARTMENT OF PUBLIC WORKS

333 WEST OCEAN BOULEVARD • LONG BEACH, CA 90802 • (562) 570-6383 • FAX (562) 570-6012

August 8, 2017

HONORABLE MAYOR AND CITY COUNCIL
City of Long Beach
California

RECOMMENDATION:

Authorize the City Manager or designee to accept the dedication of an irrevocable offer for future alley widening purposes adjacent to 325 Daisy Avenue. (District 1)

DISCUSSION

When significant new development is proposed, the Public Works Department provides for widening the adjacent public rights-of-way to the standards established in the City's General Plan. For the construction of a two-story, two-unit duplex at 325 Daisy Avenue, the developer has agreed to conditions of approval that include an irrevocable offer to dedicate five feet for future alley right-of-way along Roble Way and an irrevocable offer to dedicate 2.5 feet along Nylic Court (Exhibit A). The ultimate 20-foot width of Roble Way and Nylic Court will be achieved at such future date when private development adjacent to the full length of the alleys are dedicated and the City accepts all dedication offers.

This matter was reviewed by Deputy City Attorney Linda T. Vu and by Budget Analysis Officer Julissa José-Murray on July 5, 2017.

TIMING CONSIDERATIONS

City Council action is requested on August 8, 2017, to allow the developer to complete the tract development.

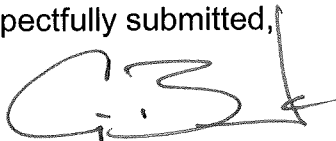
FISCAL IMPACT

A document processing fee of \$1,258 was deposited in the General Fund (GF) in the Public Works Department (PW). There is no local job impact associated with this recommendation.

SUGGESTED ACTION:

Approve recommendation.

Respectfully submitted,



CRAIG A. BECK
DIRECTOR OF PUBLIC WORKS

P:\CL\ROW 325 DAISY AVENUE DEDICATION CL.DOC
CB:SC:EL:JH:BP:LA:DB

APPROVED:

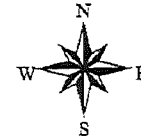


PATRICK H. WEST
CITY MANAGER



ATTACHMENT – EXHIBIT A: SKETCH

SK 2108

SKETCH SHOWING PORTIONS OF TOWNSITE OF LONG BEACH TRACT BLOCK 137 IRREVOCABLE OFFERED TO THE CITY OF LONG BEACH FOR PUBLIC ALLEY PURPOSES (FUTURE).



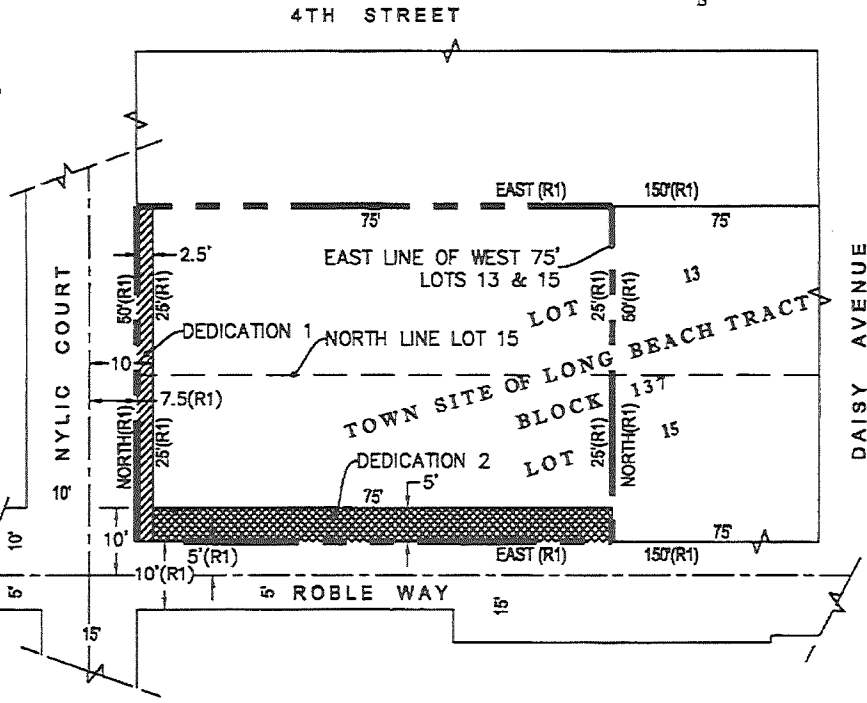
LEGEND

-  25 Foot Dedication 1
-  5 Foot Dedication 2

--- PROPERTY LINE
 (R1) DATA PER TOWN SITE OF LONG BEACH TRACT, MR. 19/91



Thomas Terwilliger
 2017.06.15
 19:09:01
 -07'00'



ENGINEERING BUREAU
 CITY OF LONG BEACH, CALIFORNIA
 EXHIBIT A