

RESOLUTION NO. RES-08-0081

A RESOLUTION OF THE CITY COUNCIL OF THE  
CITY OF LONG BEACH AFFIRMING FORMATION OF THE  
CITY OF LONG BEACH COMMUNITY FACILITIES  
DISTRICT NO. 2007-2 (BELMONT SHORE), AUTHORIZING  
THE LEVY OF A SPECIAL TAX WITHIN THE DISTRICT,  
PRELIMINARILY ESTABLISHING AN APPROPRIATIONS  
LIMIT FOR THE DISTRICT, AND RESUBMITTING LEVY OF  
THE SPECIAL TAX AND THE ESTABLISHMENT OF THE  
APPROPRIATIONS LIMIT TO THE QUALIFIED ELECTORS  
OF THE DISTRICT

WHEREAS, on December 11, 2007, pursuant to the Long Beach Special  
Tax Financing Improvement Law, Long Beach Municipal Code Section 3.52.511 et seq.  
(the "Law"), this City Council adopted Resolution No. RES-07-0166 entitled "A Resolution  
of the City Council of the City of Long Beach of Formation of the City of Long Beach  
Community Facilities District No. 2007-2 (Belmont Shore), Authorizing the Levy of a  
Special Tax Within the District, Preliminarily Establishing an Appropriations Limit for the  
District, and Submitting the Levy of the Special Tax and the Establishment of the  
Appropriations Limit to the Qualified Electors of the District" (the "Prior Resolution of  
Formation"), Resolution No. RES-07-0167 entitled "A Resolution of the City Council of the  
City of Long Beach Determining the Necessity to Incur Bonded Indebtedness Within the  
City of Long Beach Community Facilities District No. 2007-2 (Belmont Shore) and  
Submitting Proposition to the Qualified Electors of the District" (the "Prior Resolution of  
Necessity") and Resolution No. RES-07-168 entitled "A Resolution of the City Council of  
the City of Long Beach Calling Special Election Within the City of Long Beach  
Community Facilities District No. 2007-2 (Belmont Shore)" (the "Prior Resolution Calling

1 Election”), all related to the proposed formation of the City of Long Beach Community  
2 Facilities District No. 2007-2 (Belmont Shore) (the “District”) in order to fund costs of  
3 parking facilities and improvements (the “Facilities”) and to refinance certain outstanding  
4 bonds (the “1993 Bonds”), as described in the Prior Resolution of Formation; and

5 WHEREAS, pursuant to the Prior Resolution Calling Election, an election  
6 was held within the District on March 3, 2008, regarding the proposition of the levy of a  
7 special tax in the District and the establishment of an appropriations limit for the District  
8 (as described in the Prior Resolution of Formation), and of the incurring of up to  
9 \$5,800,000 in bonded indebtedness of the City for the District (as described in the Prior  
10 Resolution of Necessity) (collectively, the “District Propositions”); and

11 WHEREAS, the District Propositions were not approved by the qualified  
12 electors of the District by more than two-thirds of the votes cast at the election, and on  
13 April 15, 2008, this City Council adopted a resolution entitled “A Resolution of the City  
14 Council of the City of Long Beach Declaring Results of Special Election, and Suspending  
15 Actions With Respect to Special Tax Levies Therein”, which resolution directed that no  
16 further action be taken by this City Council with respect to levying special taxes in the  
17 District for six months from March 3, 2008; and

18 WHEREAS, on May 13, 2008, this City Council adopted an ordinance  
19 entitled “An Ordinance of the City Council of the City of Long Beach Amending Provisions  
20 of the Long Beach Municipal Code Pertaining to Assessment District Bonds (Division IV  
21 of Chapter 3.52) and Special Tax Financing Improvement Procedures (Division V of  
22 Chapter 3.52)” (the “Ordinance”), which Ordinance, among other matters, amended a  
23 provision of the Law with regard to the number of votes to which each landowner in the  
24 District is entitled in an election with respect to the District, to allow the City Council, in  
25 certain circumstances, to authorize an alternative allocation of votes to better reflect the  
26 relative burden of the special tax on the parcels in the District; and

27 WHEREAS, on July 22, 2008, this City Council adopted RES-08-0080  
28 entitled “A Resolution of the City Council of the City of Long Beach Affirming Resolutions

1 of Intention Relating to the Proposed City of Long Beach Community Facilities District  
2 No. 2007-2 (Belmont Shore)" (the "Resolution Affirming Resolutions of Intention"),  
3 pursuant to which, among other matters, the City Council affirmed various matters set  
4 forth in RES-07-0154, the Resolution of Intention to Form the District adopted on  
5 November 13, 2007, and determined that the alternative method of voting added by the  
6 Ordinance to the Law would apply to the voting procedures for a new election of the  
7 landowners with respect to the District with respect to the District Propositions; and

8 WHEREAS, the Resolution Affirming Resolutions of Intention called for a  
9 public hearing on the District to be held on August 5, 2008, and notice of the public  
10 hearing was published as required by the Law; and

11 WHEREAS, on this date this City Council held the public hearing as  
12 required by the Law and the Resolution Affirming Resolutions of Intention relative to the  
13 proposed formation of the District; and

14 WHEREAS, at the hearing all interested persons desiring to be heard on all  
15 matters pertaining to the formation of the District, the Facilities eligible to be funded by  
16 the District, the 1993 Bonds to be refinanced by the District and the levy of the special tax  
17 in the District were heard and a full and fair hearing was held; and

18 WHEREAS, at the hearing evidence was presented to this City Council on  
19 the matters before it, including a report by the Director of Financial Management of the  
20 City (the "Report") as to the Facilities eligible to be funded by the District and of  
21 refinancing the 1993 Bonds and the costs thereof, a copy of which is on file with the City  
22 Clerk, and this City Council at the conclusion of the hearing was fully advised regarding  
23 the District; and

24 WHEREAS, written protests with respect to the formation of the District  
25 and/or the furnishing of specified types of Facilities or the refinancing of the 1993 Bonds  
26 by the District, as described in the Report, have not been filed with the City Clerk by fifty  
27 percent (50%) or more of the registered voters residing within the territory of the District  
28 or property owners of one-half (1/2) or more of the area of land within the District and not

1 exempt from the special tax; and

2 WHEREAS, the special tax proposed to be levied in the District to pay for  
3 costs of the Facilities and of the refinancing of the 1993 Bonds as set forth in Exhibit B to  
4 the Resolution Affirming Resolutions of Intention has not been eliminated by protest by  
5 fifty percent (50%) or more of the registered voters residing within the territory of the  
6 District or the owners of one-half (1/2) or more of the area of land within the District and  
7 not exempt from the special tax;

8 NOW, THEREFORE, the City Council of the City of Long Beach resolves as  
9 follows:

10 Section 1. The foregoing recitals are true and correct.

11 Section 2. The proposed special tax to be levied within the District has  
12 not been precluded by majority protest pursuant to Section 3.52.5210 of the Law.

13 Section 3. All prior proceedings taken by this City Council in connection  
14 with the establishment of the District and the levy of the special tax in the District have  
15 been duly considered and are hereby found and determined to be valid and in conformity  
16 with the Law. On December 21, 1999, this City Council adopted Resolution No. C-27626  
17 approving Local Goals and Policies for Community Facilities Districts Related to  
18 Commercial Development, and this City Council hereby finds and determines that the  
19 District is in conformity with said goals and policies.

20 Section 4. The establishment of the community facilities district  
21 designated "City of Long Beach Community Facilities District No. 2007-2 (Belmont  
22 Shore)" is hereby affirmed.

23 Section 5. The boundaries of the District, as described in the Resolution  
24 of Intention and set forth in the amended boundary map of the District (the "Revised  
25 Map"), a copy of which Revised Map was recorded on December 18, 2007 in the Los  
26 Angeles County Recorder's Office at Book 192 of Maps of Assessment and Community  
27 Facilities Districts at Page 80 (instrument no. 2007 2778200), are hereby approved. The  
28 Revised Map is incorporated herein by this reference and shall be the official map of the

1 boundaries of the District.

2           Section 6.    The types of facilities eligible to be funded by the District and  
3 the 1993 Bonds to be refinanced by the District, in each case pursuant to the Law, are as  
4 described in Exhibit A to the Resolution Affirming Resolutions of Intention which Exhibit is  
5 by this reference incorporated herein.

6           Section 7.    Except to the extent that funds are otherwise available to the  
7 District to pay for the Facilities and/or to pay the principal and interest as it becomes due  
8 on bonds of the District issued to finance the Facilities and/or to refinance the 1993  
9 Bonds, a special tax sufficient to pay the costs thereof, secured by recordation of a  
10 continuing lien against all non-exempt real property in the District, will be levied within the  
11 District and collected in the same manner as ordinary ad valorem property taxes or in  
12 such other manner as this City Council shall determine, including direct billing of the  
13 affected property owners. The proposed rate and method of apportionment of the special  
14 tax among the parcels of real property within the District, in sufficient detail to allow each  
15 landowner within the District to estimate the maximum amount such owner will have to  
16 pay, are described in Exhibit B to the Resolution Affirming Resolutions of Intention, which  
17 Exhibit is by this reference incorporated herein, and shall be the rate and method of  
18 apportionment of special taxes for the District. This City Council hereby finds that the  
19 basis for the levy and apportionment of the special tax, as set forth in said rate and  
20 method of apportionment of special taxes, is reasonable.

21           Section 8.    The office of the Treasurer of the City of Long Beach, 333  
22 West Ocean Boulevard, Long Beach, California 90802, telephone number (562) 570-  
23 6845, is the office of the City that will be responsible for preparing annually and whenever  
24 otherwise necessary a current roll of special tax levy obligations by assessor's parcel  
25 number and that will be responsible for estimating future special tax levies for the District  
26 pursuant to Section 3.52.552 of the Law.

27           Section 9.    Upon recordation of a notice of special tax lien pursuant to  
28 Section 3114.5 of the California Streets and Highways Code for the District, a continuing

1 lien to secure each levy of the special tax shall attach to all nonexempt real property in  
2 the District and this lien shall continue in force and effect until collection of the tax in the  
3 respective improvement area by the City ceases.

4           Section 10. In accordance with Section 3.52.5216 of the Long Beach  
5 Municipal Code, the annual appropriations limit, as defined by subdivision (h) of Section 8  
6 of Article XIIB of the California Constitution, of the District is hereby preliminarily  
7 established at \$5,800,000 and said annual appropriations limit shall be submitted to the  
8 voters of the District as provided below. The proposition establishing the appropriations  
9 limit for the District shall become effective if approved by the qualified electors of the  
10 District voting thereon and shall be adjusted in accordance with the applicable provisions  
11 of Section 3.52.5216 of the Law.

12           Section 11. Pursuant to the provisions of the Law, the proposition of the  
13 levy of the special tax and the proposition of the establishment of the appropriations limit  
14 specified above shall be resubmitted to the qualified electors of the District at an election  
15 using the alternative voting procedure authorized by the Ordinance, the time, place and  
16 conditions of which election shall be as specified by a separate resolution of this City  
17 Council.

18           Section 12. This resolution shall take effect immediately upon its adoption  
19 by the City Council, and the City Clerk shall certify the vote adopting this resolution.

21           I hereby certify that the foregoing resolution was adopted by the City  
22 Council of the City of Long Beach at its meeting of August 5, 2008, by the

23 ////

24 ////

25 ////

26 ////

27 ////

28 ////

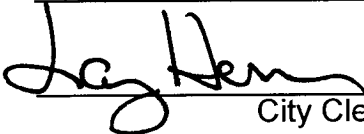
1  
2  
3  
4  
5  
6  
7  
8  
9  
10  
11  
12  
13  
14  
15  
16  
17  
18  
19  
20  
21  
22  
23  
24  
25  
26  
27  
28

following vote:

Ayes: Councilmembers: B. Lowenthal, S. Lowenthal, DeLong,  
Schipske, Andrews, Reyes Uranga,  
Gabelich, Lerch.

Noes: Councilmembers: None.

Absent: Councilmembers: O'Donnell.

  
City Clerk

HAM:fl  
7/28/08  
#07-05237

**CITY OF LONG BEACH  
COMMUNITY FACILITIES DISTRICT NO. 2007-2  
(BELMONT SHORE)  
  
COMMUNITY FACILITIES DISTRICT REPORT  
(August 5, 2008)**

**CONTENTS**

Introduction

- A. Description of Facilities and 1993 Bonds
- B. Proposed Boundaries of the Community Facilities District
- C. Cost Estimate

Exhibit A - Description of the Facilities and Services

Exhibit B - Cost Estimate

Exhibit C - Copy of Ordinance No. C-6219



**CITY OF LONG BEACH  
COMMUNITY FACILITIES DISTRICT NO. 2007-2  
(BELMONT SHORE)**

**INTRODUCTION.** The City Council (the "City Council") of the City of Long Beach (the "City") did, pursuant to the provisions of the Long Beach Special Tax Financing Improvement Law (the "Law"), on July 8, 2008, adopt a resolution entitled "A Resolution of the City Council of the City of Long Beach Affirming Resolutions of Intention Relating to the Proposed City of Long Beach Community Facilities District No. 2007-2 (Belmont Shore)" (the "Resolution Affirming Resolutions of Intention"). In the Resolution Affirming Resolutions of Intention, the City Council expressly approved the direction to prepare a written Community Facilities District Report (the "Report"), for the proposed City of Long Beach Community Facilities District No. 2007-2 (Belmont Shore) (the "District").

The Resolution Affirming Resolutions of Intention confirming the direction to prepare the Report contemplated that the Report would contain the following:

1. A brief description of the facilities proposed to be eligible to be financed by the District and of the 1993 Bonds to be repaid and defeased by the District; and
2. An estimate of the cost of providing the facilities and repaying and defeasing the 1993 Bonds, including the costs of any proposed new bond financing and any City administrative costs.

For particulars, reference is made to the Resolution Affirming Resolutions of Intention and to RES-07-1308, the Resolution of Intention to Form the District referenced therein, as previously adopted on November 13, 2007 by the City Council.

**NOW, THEREFORE,** I, the Director of Financial Management of the City of Long Beach, do hereby submit the following data:

**A. DESCRIPTION OF FACILITIES AND 1993 BONDS.** A general description of the facilities that the City Council has determined to be eligible to be funded by the District and of the 1993 Bonds to be repaid and defeased by the District is as shown in Exhibit "A" attached hereto and by this reference made a part hereof.

**B. PROPOSED BOUNDARIES OF THE COMMUNITY FACILITIES DISTRICT.** The proposed boundaries of the District are those properties and parcels on which special taxes may be levied to pay for the costs and expenses of the facilities and repaying bonded indebtedness the proceeds of which are used to finance the facilities and/or repay and defease the 1993 Bonds. The proposed boundaries of the District are described on the revised map of the District recorded on December 18, 2007, in Book 192 at Page 80 of Maps of Assessment and Community Facilities Districts in the office of the County Recorder for the County of Los Angeles.

**C. COST ESTIMATE.** The cost estimate for the District for the financing of the facilities and the repayment and defeasance of the 1993 Bonds is set forth in Exhibit "B" attached hereto and by this reference made a part hereof.

**D. ORDINANCE NO. C-6219.** Attached hereto as Exhibit "C" is a copy of Ordinance No. C-6219 adopted by the City Council on December 17, 1985, as referenced in Exhibit A hereto.

Dated: August 5, 2008

By: \_\_\_\_\_  
Director of Financial Management  
of the City of Long Beach

## EXHIBIT A

### CITY OF LONG BEACH COMMUNITY FACILITIES DISTRICT NO. 2007-2 (BELMONT SHORE)

#### DESCRIPTION OF FACILITIES ELIGIBLE TO BE FUNDED BY THE DISTRICT AND OF PRIOR BONDS TO BE REPAID AND DEFEASED BY THE DISTRICT

##### FACILITIES

The District shall be eligible to finance all or a portion of the costs of the following:

- The acquisition of land and construction of a parking lot of approximately 5800 square feet at 189 Park Avenue in the City of Long Beach, including but not limited to asphalt paving, construction of fencing and walls, the installation of signage, and any related costs of land acquisition, demolition, grading, relocation of utilities, design, construction, landscaping, architectural treatments, lighting, meter and other related costs and appurtenances.
- The resurfacing of alleyways that provide access to parking lots adjacent to and behind commercial businesses within the area depicted on Attachment A to Ordinance No. C-6219 adopted by the City Council of the City of Long Beach on December 17, 1985 (the "Belmont Shore Parking Meter Revenue Area"), including but not limited to the removal and replacement of the surface of the alleyways and related and appurtenant costs.
- The acquisition, construction and improvement of property to provide public parking spaces and related and appurtenant facilities and work, to make parking available to commercial properties within the Belmont Shore Parking Meter Revenue Area, including but not limited to surface parking lots, parking structures, ingress and egress areas (including adjacent alleyways) and other similar facilities, and including costs of land acquisition, demolition, grading, relocation of utilities, design, construction, landscaping, architectural treatments, signage, lighting, meter and other related costs and appurtenances.

##### PRIOR BONDS

The District shall be eligible to repay and defease the outstanding City of Long Beach 1993 Parking Meter Revenue Bonds.

##### OTHER

The District may also finance any of the following:

1. Bond related expenses, including underwriter's discount, appraisal and feasibility study costs, reserve fund, capitalized interest, financial advisor, special tax consultant, bond counsel, disclosure counsel and underwriter's counsel fees and expenses, official statement printing, and all other incidental expenses.

2. Administrative fees of the City and the Bond trustee or fiscal agent related to the District and any bonds issued for the District.

3. Reimbursement of costs related to the formation of the District advanced by the City, or any other party, as well as reimbursement of any costs advanced by the City or any other party, for facilities or other purposes or costs of the District.

EXHIBIT B

CITY OF LONG BEACH  
COMMUNITY FACILITIES DISTRICT NO. 2007-2  
(BELMONT SHORE)

COST ESTIMATE

1. ACQUISITION & CONSTRUCTION OF FACILITIES	\$ 4,250,000
2. REPAYMENT AND DEFEASANCE OF 1993 BONDS	\$ 700,000
3. INCIDENTALS	
(a) Bond Reserve Fund	\$ 375,000
(b) Bond Discount/Underwriter Compensation	54,000
(c) Other Costs of Issuance	<u>90,000</u>
Subtotal	\$ <u>519,000</u>
Contingency	\$ <u>331,000</u>
TOTAL BOND AMOUNT NEEDED	\$ <u>5,800,000</u>

**EXHIBIT C**

**CITY OF LONG BEACH  
COMMUNITY FACILITIES DISTRICT NO. 2007-2  
(BELMONT SHORE)**

**COPY OF ORDINANCE NO. C-6219**

ORDINANCE NO. C- 6219

AN ORDINANCE OF THE CITY COUNCIL OF THE  
CITY OF LONG BEACH AMENDING ORDINANCE NO.  
C-6170, KNOWN AS THE CITY APPROPRIATIONS  
ORDINANCE, TO ESTABLISH THE BELMONT SHORE  
PARKING METER REVENUE FUND

The City Council of the City of Long Beach ordains  
as follows:

Section 1. That Section 3 of Ordinance No. C-6170,  
known as the City Appropriations Ordinance, is hereby amended  
by establishing the Belmont Shore Parking Meter Revenue Fund and  
adding said new fund to the other funds enumerated therein. Said  
Fund shall be a continuing fund and shall be for the purpose of  
accounting for revenues from parking meters located within that  
part of the Belmont Shore area of the City depicted on the map  
attached hereto as Attachment "A" and incorporated herein and  
made a part hereof by reference. Any expenditures from said  
Belmont Shore Parking Revenue Fund are hereby expressly limited  
to and shall be only authorized for the purposes of acquisition,  
construction, improvement, operation or maintenance (including  
all services and supplies) of City parking lots, parking  
facilities, or parking related equipment or fixtures located  
within or which are for the benefit of that area of Belmont Shore  
delineated in Attachment "A".

Sec. 2. The City Clerk shall certify to the passage of  
this ordinance by the City Council of the City of Long Beach and

John R. Calhoun  
City Attorney of Long Beach  
333 West Ocean Boulevard  
Long Beach, California 90802  
Telephone (213) 590-6061

1 cause the same to be posted in three conspicuous places in the  
2 City of Long Beach, and it shall take effect on the 31st day after  
3 its final passage.

4 I hereby certify that the foregoing ordinance was  
5 adopted by the City Council of the City of Long Beach, at its  
6 meeting of December 17, 1985 by the following vote:

7 Ayes: Councilmembers: Wilder, Edgerton, Hall, Clark,  
8 Sato, Tuttle, Harwood, Kell.

9  
10 Noes: Councilmembers: None.

11 Absent: Councilmembers: Wilson.

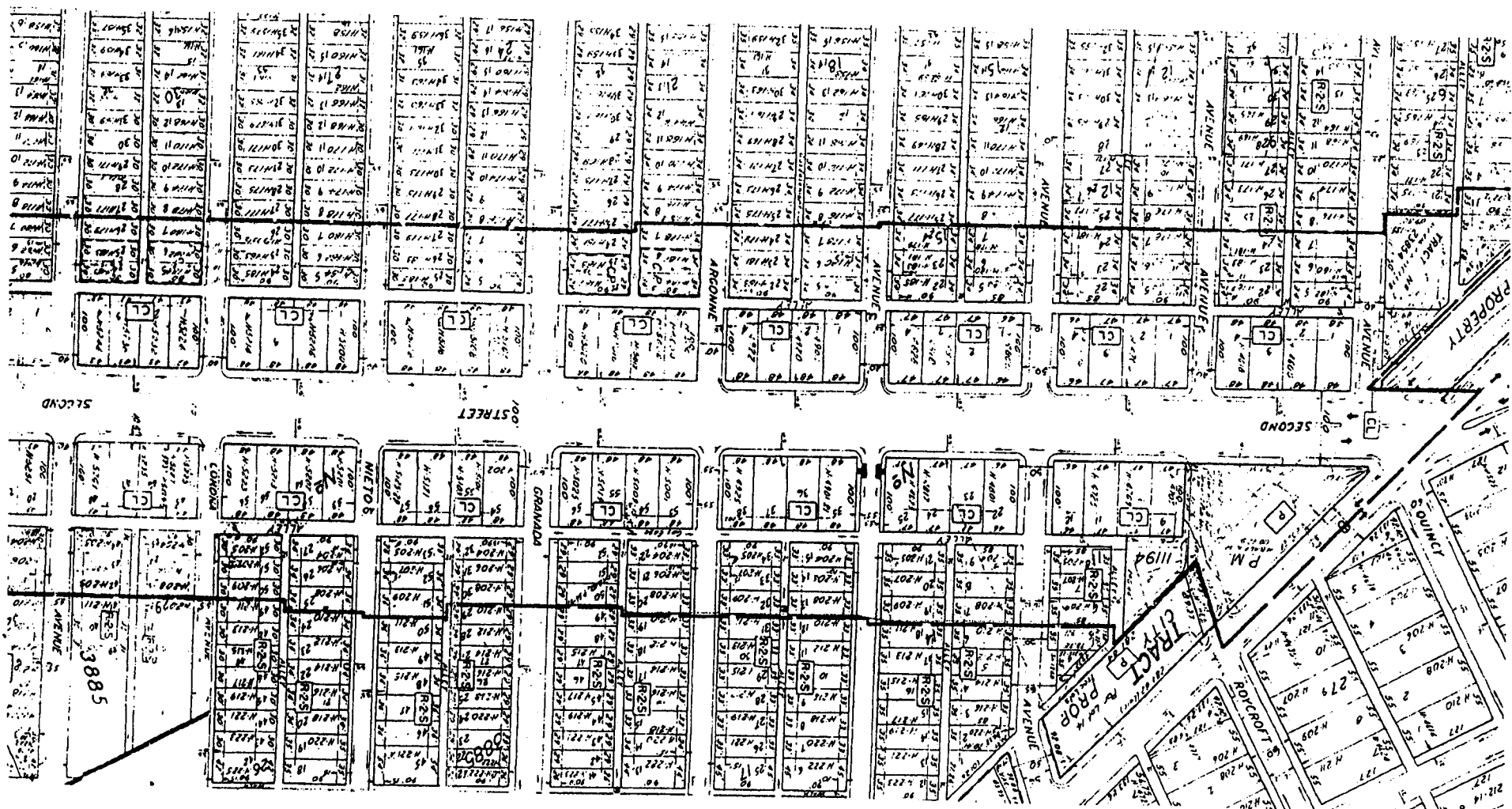
12 Shelba Powell  
13 City Clerk  
14  
15  
16  
17  
18  
19  
20  
21  
22  
23  
24  
25  
26

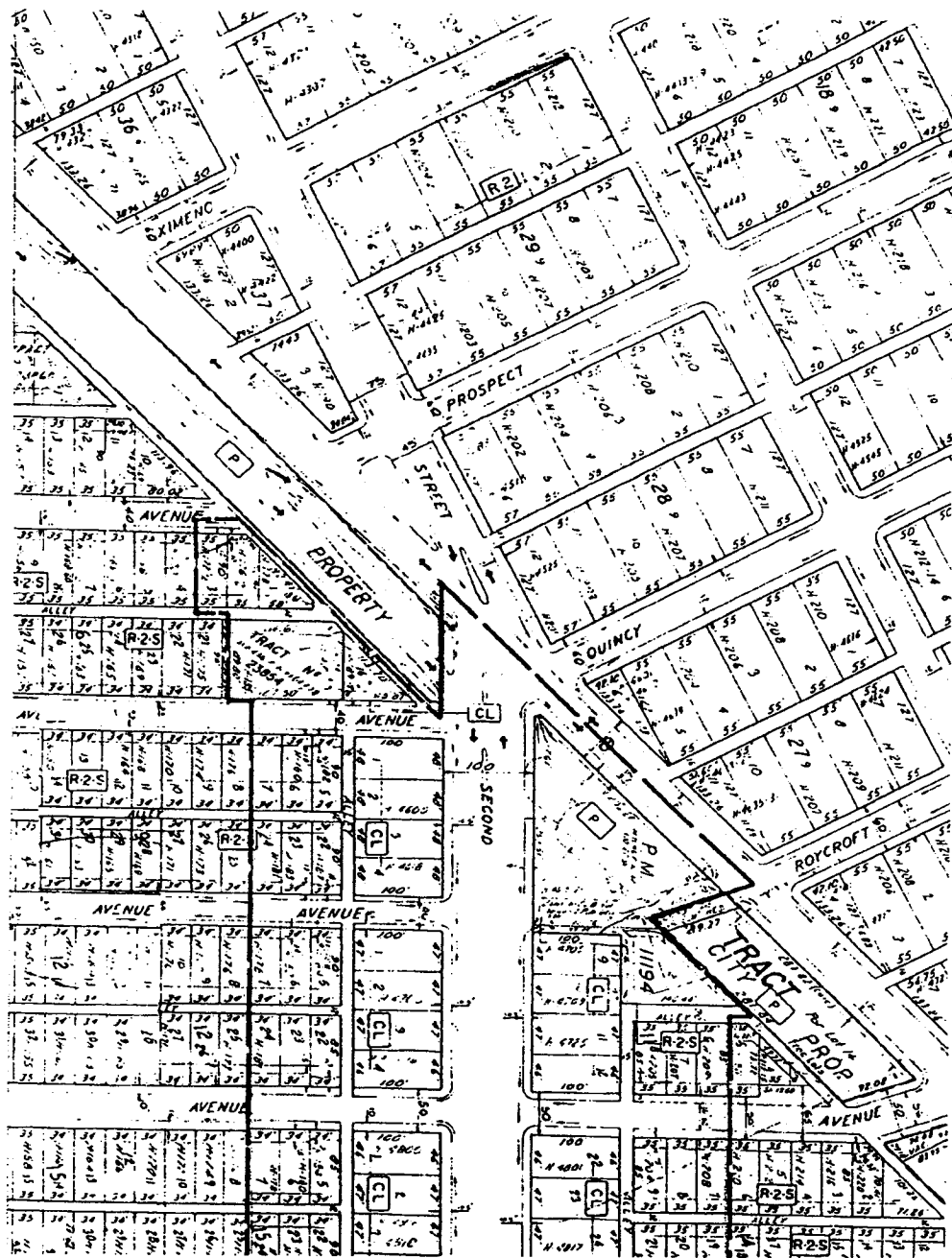
27 JRC:fl  
28 12-02-85  
D-120

John R. Calhoun  
City Attorney of Long Beach  
333 West Ocean Boulevard  
Long Beach, California 90802  
Telephone (213) 590-6061









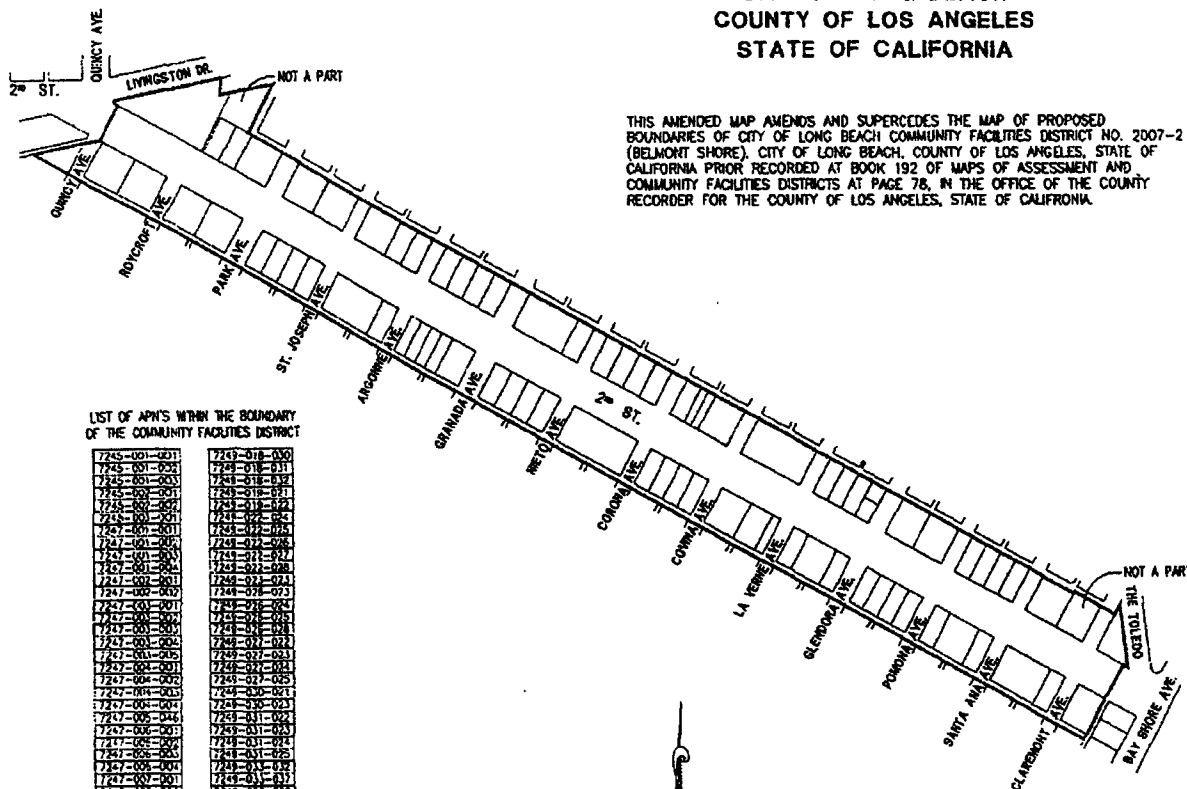
192/30

# AMENDED MAP OF PROPOSED BOUNDARIES OF CITY OF LONG BEACH COMMUNITY FACILITIES DISTRICT NO. 2007-2 (BELMONT SHORE)

CITY OF LONG BEACH  
COUNTY OF LOS ANGELES  
STATE OF CALIFORNIA

**COPY** of Document Recorded  
**DEC 18 2007**  
Has not been compared with original.  
Original will be returned when  
processing has been completed.  
LOS ANGELES COUNTY REGISTRAR - RECORDER

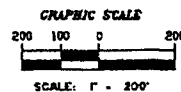
12/18/07  
**RECORDED**  
20072778200



THIS AMENDED MAP AMENDS AND SUPERCEDES THE MAP OF PROPOSED BOUNDARIES OF CITY OF LONG BEACH COMMUNITY FACILITIES DISTRICT NO. 2007-2 (BELMONT SHORE), CITY OF LONG BEACH, COUNTY OF LOS ANGELES, STATE OF CALIFORNIA PRIOR RECORDED AT BOOK 192 OF MAPS OF ASSESSMENT AND COMMUNITY FACILITIES DISTRICTS AT PAGE 78, IN THE OFFICE OF THE COUNTY RECORDER FOR THE COUNTY OF LOS ANGELES, STATE OF CALIFORNIA.

LIST OF APNS WITHIN THE BOUNDARY  
OF THE COMMUNITY FACILITIES DISTRICT

7245-001-001	7245-018-000
7245-001-002	7245-018-011
7245-001-003	7245-018-012
7245-001-004	7245-018-013
7245-001-005	7245-018-014
7245-001-006	7245-018-015
7245-001-007	7245-018-016
7245-001-008	7245-018-017
7245-001-009	7245-018-018
7245-001-010	7245-018-019
7245-001-011	7245-018-020
7245-001-012	7245-018-021
7245-001-013	7245-018-022
7245-001-014	7245-018-023
7245-001-015	7245-018-024
7245-001-016	7245-018-025
7245-001-017	7245-018-026
7245-001-018	7245-018-027
7245-001-019	7245-018-028
7245-001-020	7245-018-029
7245-001-021	7245-018-030
7245-001-022	7245-018-031
7245-001-023	7245-018-032
7245-001-024	7245-018-033
7245-001-025	7245-018-034
7245-001-026	7245-018-035
7245-001-027	7245-018-036
7245-001-028	7245-018-037
7245-001-029	7245-018-038
7245-001-030	7245-018-039
7245-001-031	7245-018-040
7245-001-032	7245-018-041
7245-001-033	7245-018-042
7245-001-034	7245-018-043
7245-001-035	7245-018-044
7245-001-036	7245-018-045
7245-001-037	7245-018-046
7245-001-038	7245-018-047
7245-001-039	7245-018-048
7245-001-040	7245-018-049
7245-001-041	7245-018-050
7245-001-042	7245-018-051
7245-001-043	7245-018-052
7245-001-044	7245-018-053
7245-001-045	7245-018-054
7245-001-046	7245-018-055
7245-001-047	7245-018-056
7245-001-048	7245-018-057
7245-001-049	7245-018-058
7245-001-050	7245-018-059
7245-001-051	7245-018-060
7245-001-052	7245-018-061
7245-001-053	7245-018-062
7245-001-054	7245-018-063
7245-001-055	7245-018-064
7245-001-056	7245-018-065
7245-001-057	7245-018-066
7245-001-058	7245-018-067
7245-001-059	7245-018-068
7245-001-060	7245-018-069
7245-001-061	7245-018-070
7245-001-062	7245-018-071
7245-001-063	7245-018-072
7245-001-064	7245-018-073
7245-001-065	7245-018-074
7245-001-066	7245-018-075
7245-001-067	7245-018-076
7245-001-068	7245-018-077
7245-001-069	7245-018-078
7245-001-070	7245-018-079
7245-001-071	7245-018-080
7245-001-072	7245-018-081
7245-001-073	7245-018-082
7245-001-074	7245-018-083
7245-001-075	7245-018-084
7245-001-076	7245-018-085
7245-001-077	7245-018-086
7245-001-078	7245-018-087
7245-001-079	7245-018-088
7245-001-080	7245-018-089
7245-001-081	7245-018-090
7245-001-082	7245-018-091
7245-001-083	7245-018-092
7245-001-084	7245-018-093
7245-001-085	7245-018-094
7245-001-086	7245-018-095
7245-001-087	7245-018-096
7245-001-088	7245-018-097
7245-001-089	7245-018-098
7245-001-090	7245-018-099
7245-001-091	7245-018-100
7245-001-092	7245-018-101
7245-001-093	7245-018-102
7245-001-094	7245-018-103
7245-001-095	7245-018-104
7245-001-096	7245-018-105
7245-001-097	7245-018-106
7245-001-098	7245-018-107
7245-001-099	7245-018-108
7245-001-100	7245-018-109
7245-001-101	7245-018-110
7245-001-102	7245-018-111
7245-001-103	7245-018-112
7245-001-104	7245-018-113
7245-001-105	7245-018-114
7245-001-106	7245-018-115
7245-001-107	7245-018-116
7245-001-108	7245-018-117
7245-001-109	7245-018-118
7245-001-110	7245-018-119
7245-001-111	7245-018-120
7245-001-112	7245-018-121
7245-001-113	7245-018-122
7245-001-114	7245-018-123
7245-001-115	7245-018-124
7245-001-116	7245-018-125
7245-001-117	7245-018-126
7245-001-118	7245-018-127
7245-001-119	7245-018-128
7245-001-120	7245-018-129
7245-001-121	7245-018-130
7245-001-122	7245-018-131
7245-001-123	7245-018-132
7245-001-124	7245-018-133
7245-001-125	7245-018-134
7245-001-126	7245-018-135
7245-001-127	7245-018-136
7245-001-128	7245-018-137
7245-001-129	7245-018-138
7245-001-130	7245-018-139
7245-001-131	7245-018-140
7245-001-132	7245-018-141
7245-001-133	7245-018-142
7245-001-134	7245-018-143
7245-001-135	7245-018-144
7245-001-136	7245-018-145
7245-001-137	7245-018-146
7245-001-138	7245-018-147
7245-001-139	7245-018-148
7245-001-140	7245-018-149
7245-001-141	7245-018-150
7245-001-142	7245-018-151
7245-001-143	7245-018-152
7245-001-144	7245-018-153
7245-001-145	7245-018-154
7245-001-146	7245-018-155
7245-001-147	7245-018-156
7245-001-148	7245-018-157
7245-001-149	7245-018-158
7245-001-150	7245-018-159
7245-001-151	7245-018-160
7245-001-152	7245-018-161
7245-001-153	7245-018-162
7245-001-154	7245-018-163
7245-001-155	7245-018-164
7245-001-156	7245-018-165
7245-001-157	7245-018-166
7245-001-158	7245-018-167
7245-001-159	7245-018-168
7245-001-160	7245-018-169
7245-001-161	7245-018-170
7245-001-162	7245-018-171
7245-001-163	7245-018-172
7245-001-164	7245-018-173
7245-001-165	7245-018-174
7245-001-166	7245-018-175
7245-001-167	7245-018-176
7245-001-168	7245-018-177
7245-001-169	7245-018-178
7245-001-170	7245-018-179
7245-001-171	7245-018-180
7245-001-172	7245-018-181
7245-001-173	7245-018-182
7245-001-174	7245-018-183
7245-001-175	7245-018-184
7245-001-176	7245-018-185
7245-001-177	7245-018-186
7245-001-178	7245-018-187
7245-001-179	7245-018-188
7245-001-180	7245-018-189
7245-001-181	7245-018-190
7245-001-182	7245-018-191
7245-001-183	7245-018-192
7245-001-184	7245-018-193
7245-001-185	7245-018-194
7245-001-186	7245-018-195
7245-001-187	7245-018-196
7245-001-188	7245-018-197
7245-001-189	7245-018-198
7245-001-190	7245-018-199
7245-001-191	7245-018-200



FILED IN THE OFFICE OF THE CITY CLERK OF THE CITY OF LONG BEACH  
THIS 11 DAY OF December, 2007.

*[Signature]*  
CITY CLERK  
CITY OF LONG BEACH  
LOS ANGELES COUNTY, CALIFORNIA

I HEREBY CERTIFY THAT THE WITHIN AMENDED MAP SHOWING THE PROPOSED BOUNDARIES OF THE CITY OF LONG BEACH COMMUNITY FACILITIES DISTRICT NO. 2007-2 (BELMONT SHORE), CITY OF LONG BEACH, COUNTY OF LOS ANGELES, STATE OF CALIFORNIA, WAS APPROVED BY THE CITY COUNCIL OF THE CITY OF LONG BEACH, AT A MEETING THEREOF HELD ON THE 11 DAY OF December, 2007, BY ITS RESOLUTION NO. 27-16161.

*[Signature]*  
CITY CLERK  
CITY OF LONG BEACH  
LOS ANGELES COUNTY, CALIFORNIA

FILED THIS 11 DAY OF December, 2007, AT THE HOUR OF 10 O'CLOCK P.M., IN BOOK 192 OF MAPS OF ASSESSMENT AND COMMUNITY FACILITIES DISTRICTS AT PAGE 78, IN THE OFFICE OF THE COUNTY RECORDER OF THE COUNTY OF LOS ANGELES STATE OF CALIFORNIA.

COUNTY RECORDER  
COUNTY OF LOS ANGELES

NOTE: FOR A DETAILED DESCRIPTION OF THE LINES AND DIMENSIONS OF EACH PARCEL WITHIN THE DISTRICT REFER TO THE 2007 COUNTY OF LOS ANGELES ASSESSOR'S MAPS.

**LEGEND**

- PROPOSED COMMUNITY FACILITIES DISTRICT BOUNDARY
- PARCEL LINES