

ORDINANCE NO.

1  
2  
3 AN ORDINANCE OF THE CITY COUNCIL OF THE  
4 CITY OF LONG BEACH AMENDING THE USE DISTRICT  
5 MAP OF THE CITY OF LONG BEACH AS SAID MAP HAS  
6 BEEN ESTABLISHED AND AMENDED BY AMENDING  
7 PORTIONS OF PART 16 OF SAID MAP FROM  
8 INSTITUTIONAL (I) TO PARK (P), AND MEDIUM  
9 INDUSTRIAL (IM) TO COMMUNITY COMMERCIAL  
10 AUTOMOBILE ORIENTED DISTRICT (CCA) AND PARK  
11 (P) FOR CITY-OWNED PARCELS ONLY IN THE CITY OF  
12 LONG BEACH (RZ-0507-01)

13  
14 The City Council of the City of Long Beach ordains as follows:

15  
16 Section 1. Environmental documentation having been prepared, certified,  
17 received and considered as required by law, and the City Council hereby finding that  
18 the proposed change will not adversely affect the character, livability or appropriate  
19 development of the surrounding areas and that the proposed changes are consistent  
20 with the goals, objectives and provisions of the General Plan, the official Use District  
21 Map of the City of Long Beach, as established and amended, is further amended by  
22 amending portions of Part 16 of said Map to from Institutional (I) to Park (P), and  
23 Medium Industrial (IM) to Community Commercial Automobile Oriented District (CCA)  
24 and Park (P) for City-owned parcels only. Those portions of Part 16 of said map which  
25 are amended by this ordinance are depicted on Exhibit "A" which is attached hereto and  
26 by this reference made a part of this ordinance and the official Use District Map.

27 //

28 //

Robert E. Shannon  
City Attorney of Long Beach  
333 West Ocean Boulevard  
Long Beach, California 90802-4664  
Telephone (562) 570-2200

Robert E. Shannon  
City Attorney of Long Beach  
333 West Ocean Boulevard  
Long Beach, California 90802-4664  
Telephone (562) 570-2200

1  
2  
3  
4  
5  
6  
7  
8  
9  
10  
11  
12  
13  
14  
15  
16  
17  
18  
19  
20  
21  
22  
23  
24  
25  
26  
27  
28

Sec. 2. All ordinances and parts of ordinances in conflict herewith are hereby repealed.

Sec. 3. The City Clerk shall certify to the passage of this ordinance by the City Council and cause it to be posted in three conspicuous places in the City of Long Beach, and it shall take effect on the thirty-first day after it is approved by the Mayor.

I hereby certify that the foregoing ordinance was adopted by the City Council of the City of Long Beach at its meeting of \_\_\_\_\_, 2006, by the following vote:

Ayes: Councilmembers: \_\_\_\_\_

\_\_\_\_\_

\_\_\_\_\_

Noes: Councilmembers: \_\_\_\_\_

\_\_\_\_\_

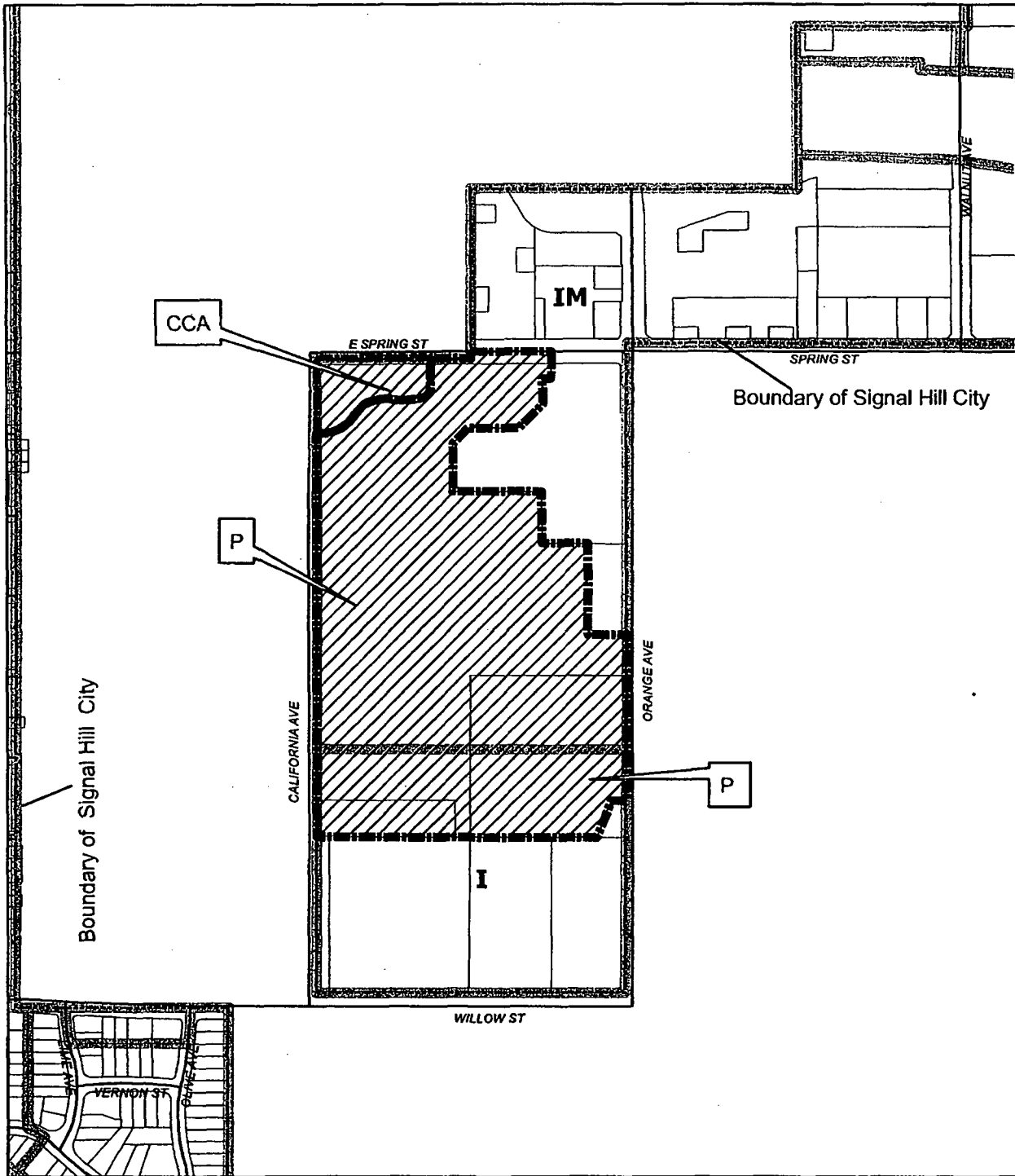
Absent: Councilmembers: \_\_\_\_\_

\_\_\_\_\_

\_\_\_\_\_  
City Clerk

Approved: \_\_\_\_\_

\_\_\_\_\_  
Mayor



Area to be changed from IM to CCA & P and From I to P



PROPOSED  
 AMENDMENT TO A PORTION OF PART 16  
 OF THE ZONING DISTRICT MAP

REZONING CASE #  
 0507-01