

HONORABLE MAYOR AND CITY COUNCIL  
March 20, 2018  
Harbor Department Appeal Hearing  
ATTACHMENT 4

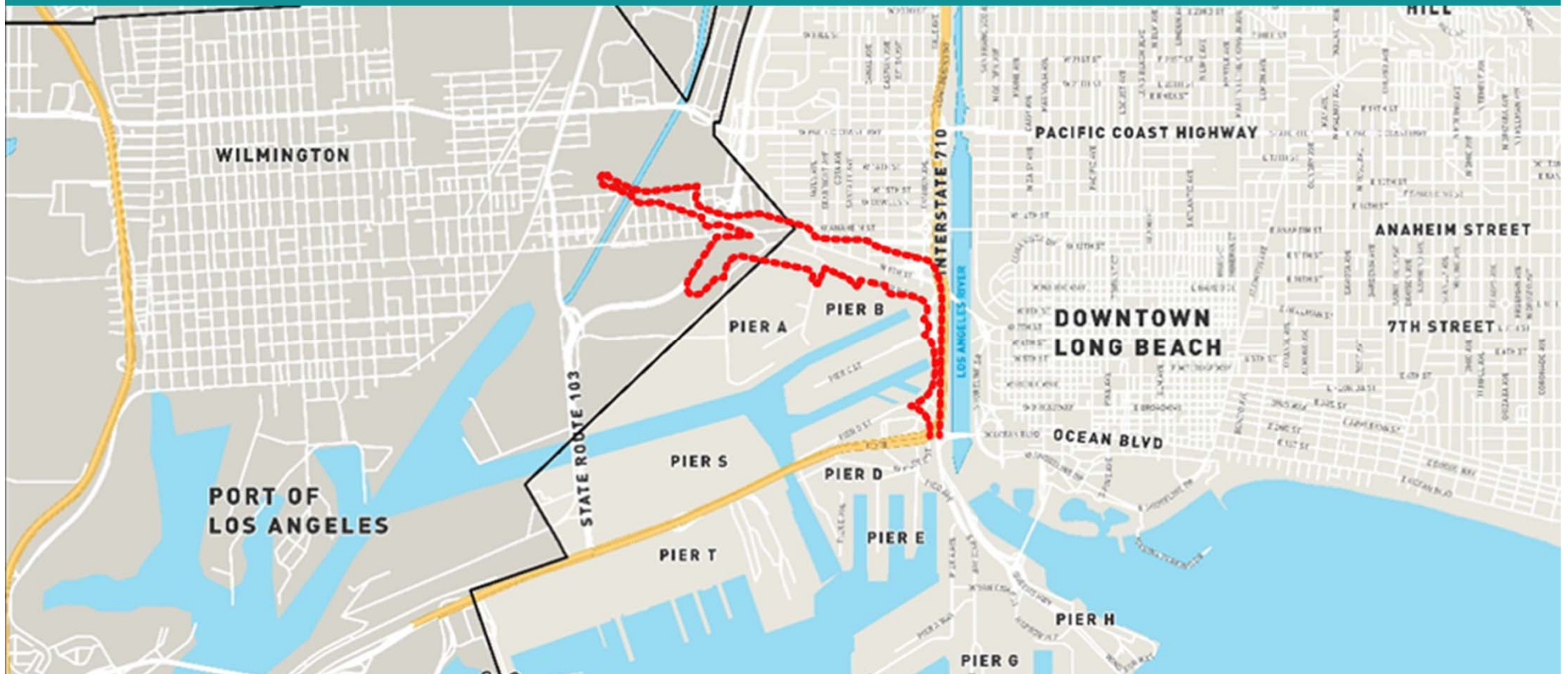
LONG BEACH BOARD OF HARBOR COMMISSIONERS  
JANUARY 22, 2018

FINAL ENVIRONMENTAL IMPACT REPORT  
**PIER B ON-DOCK RAIL  
SUPPORT FACILITY**

HEATHER TOMLEY  
DIRECTOR OF ENVIRONMENTAL PLANNING



# PIER B ON-DOCK RAIL SUPPORT FACILITY PROJECT LOCATION



## Pier B On-Dock Rail Support Facility

# Project Objectives

---

- Support a more efficient, more economically competitive and less polluting freight transport system;
- Support regional goals to improve transportation infrastructure;
- Promote a mode shift of container movement from truck to rail;
- Support goal to handle 30 to 35 percent of containers by on-dock rail;
- Accommodate up to 10,000-foot-long trains; and
- Improve motorist and rail safety by eliminating an existing at-grade crossing at 9<sup>th</sup> Street and Pico Avenue.

Port of **LONG BEACH**



ONE =  
TRAIN



750

Truck trips eliminated by one  
double-stacked on-dock train



Port of  
**LONG BEACH**  
*The Green Port*

## Pier B On-Dock Rail Support Facility

# Project Overview

---

- Reconfigure, expand, and enhance existing Pier B rail facility
- Provide longer arrival and departure tracks and expand rail car storage capacity
- Critical juncture in Port's rail network
- Support more efficient use of "on-dock" rail in the port terminals

## Pier B On-Dock Rail Support Facility

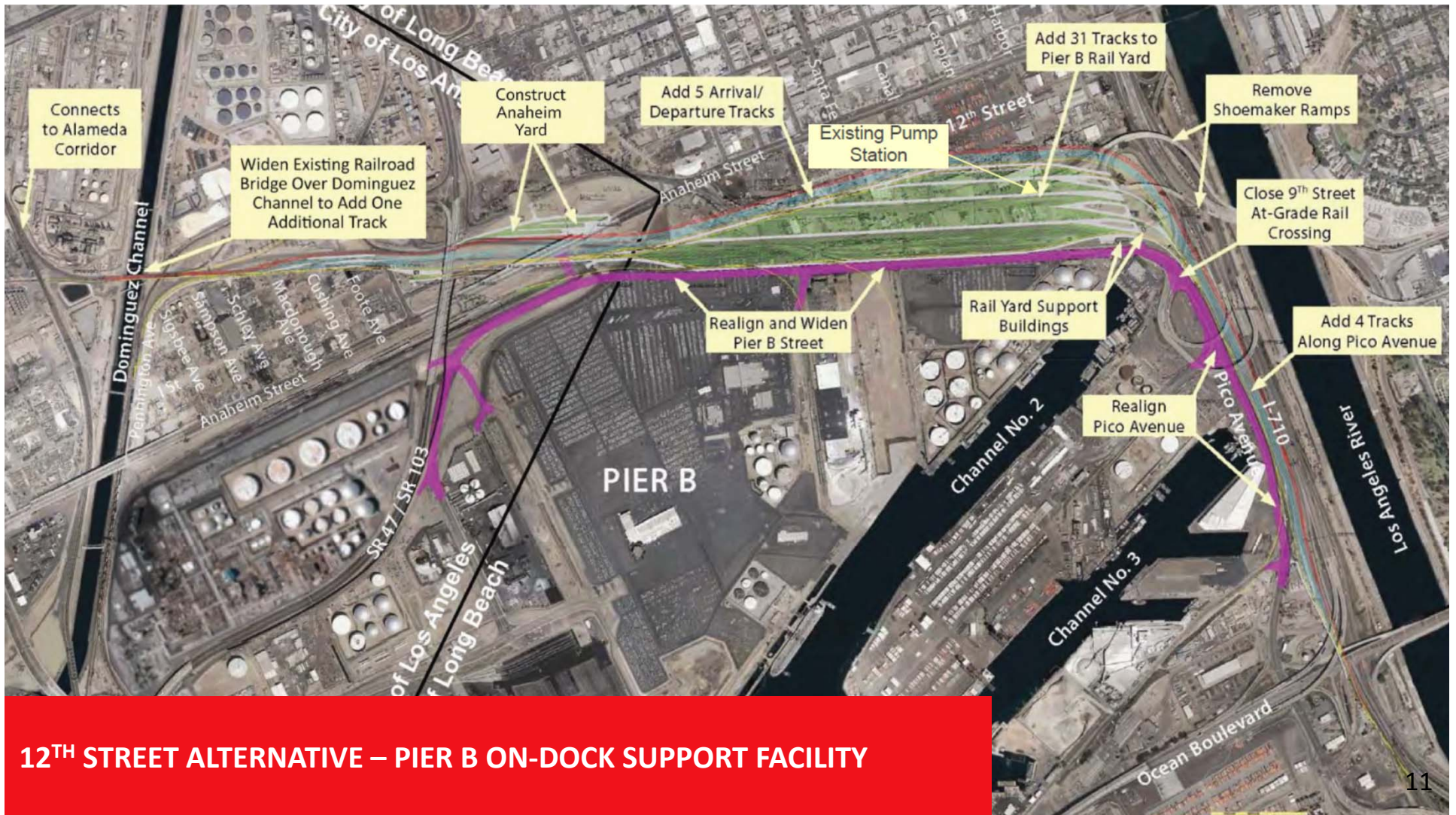
# Project Alternatives

---

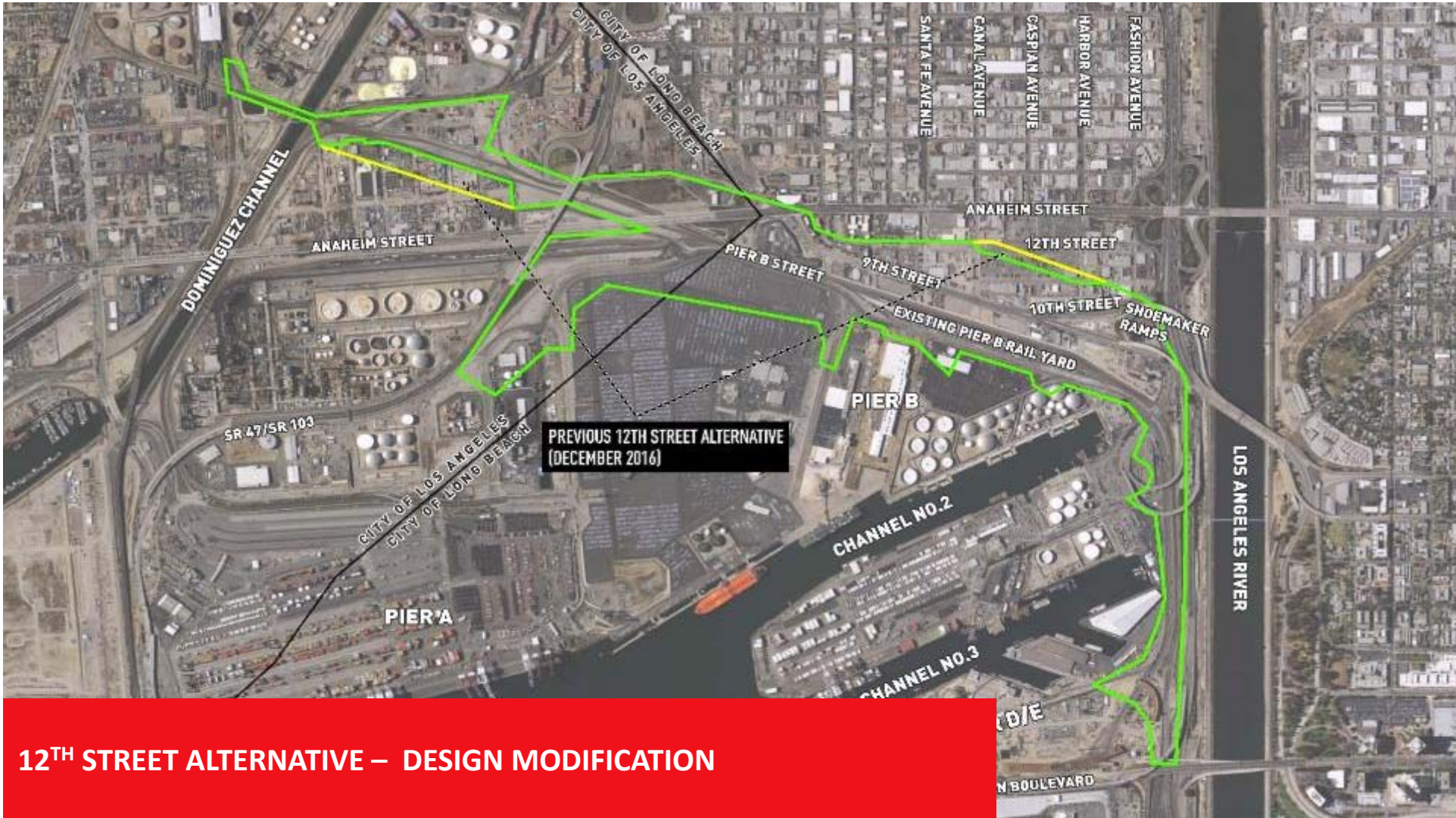
- 12<sup>th</sup> Street Alternative with Design Modification (Proposed Project)
- 10<sup>th</sup> Street Alternative with Design Modification
- 9<sup>th</sup> Street Alternative
- No Project Alternative

Port of **LONG BEACH**



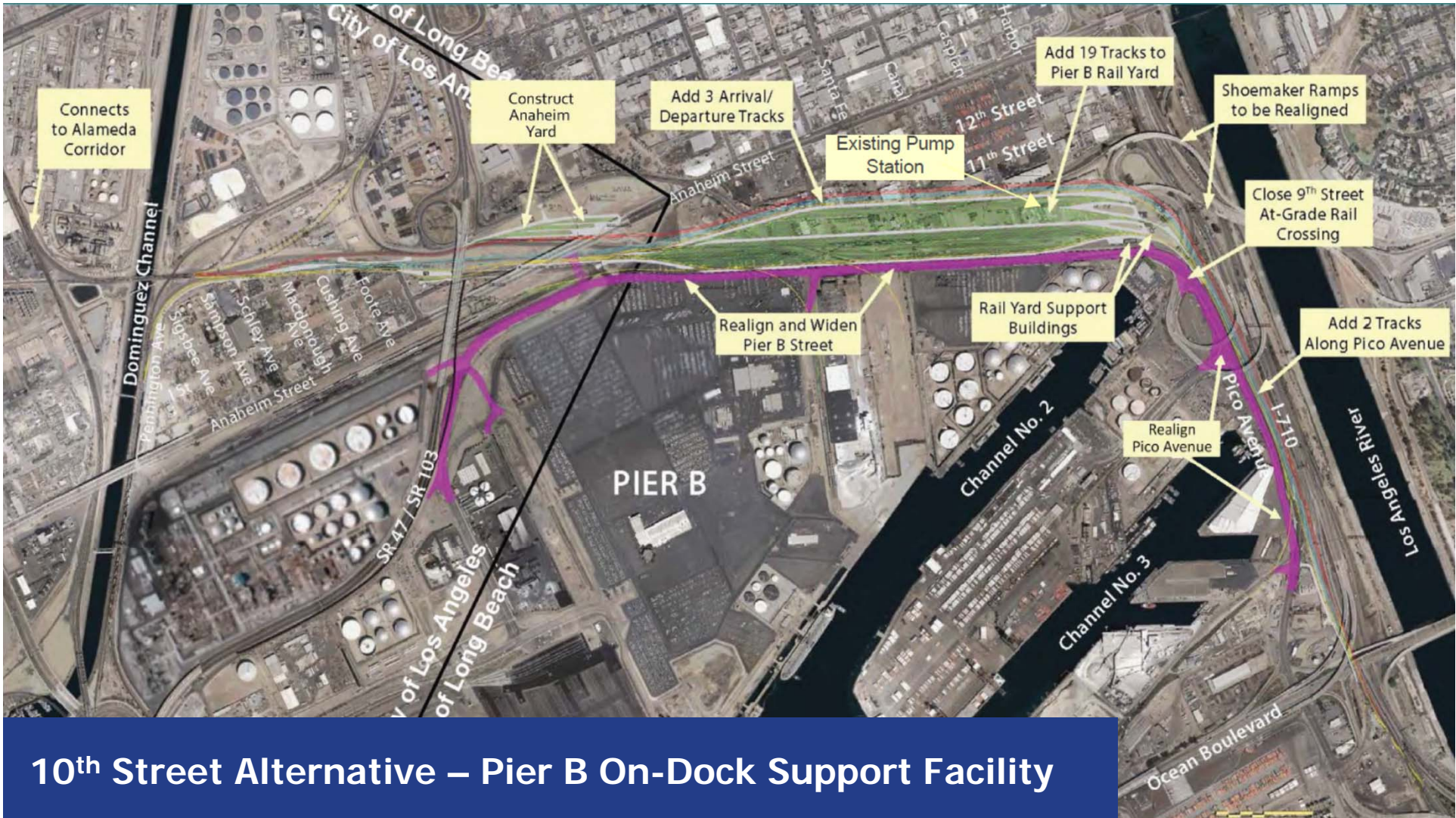






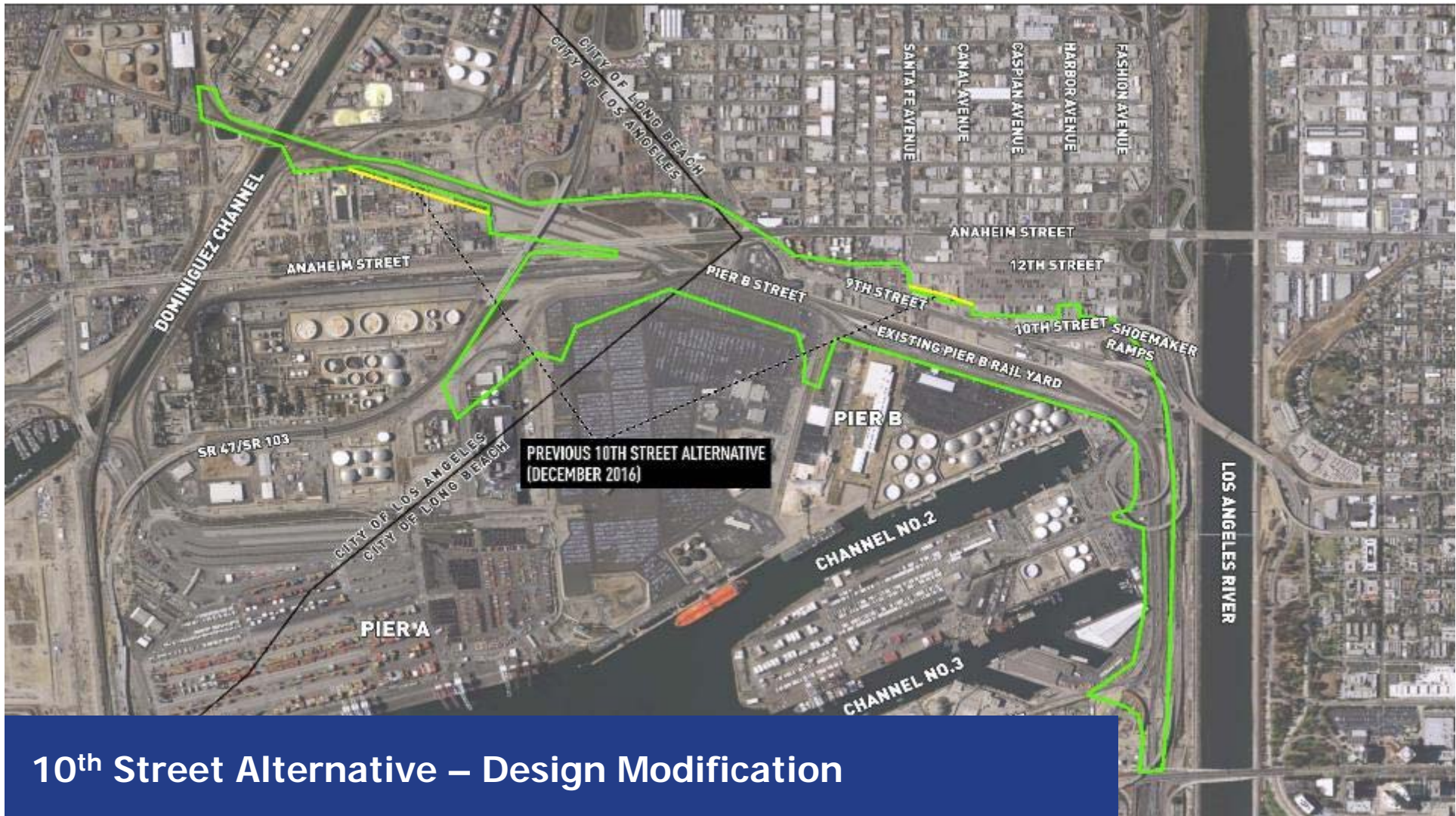
**12<sup>TH</sup> STREET ALTERNATIVE – DESIGN MODIFICATION**



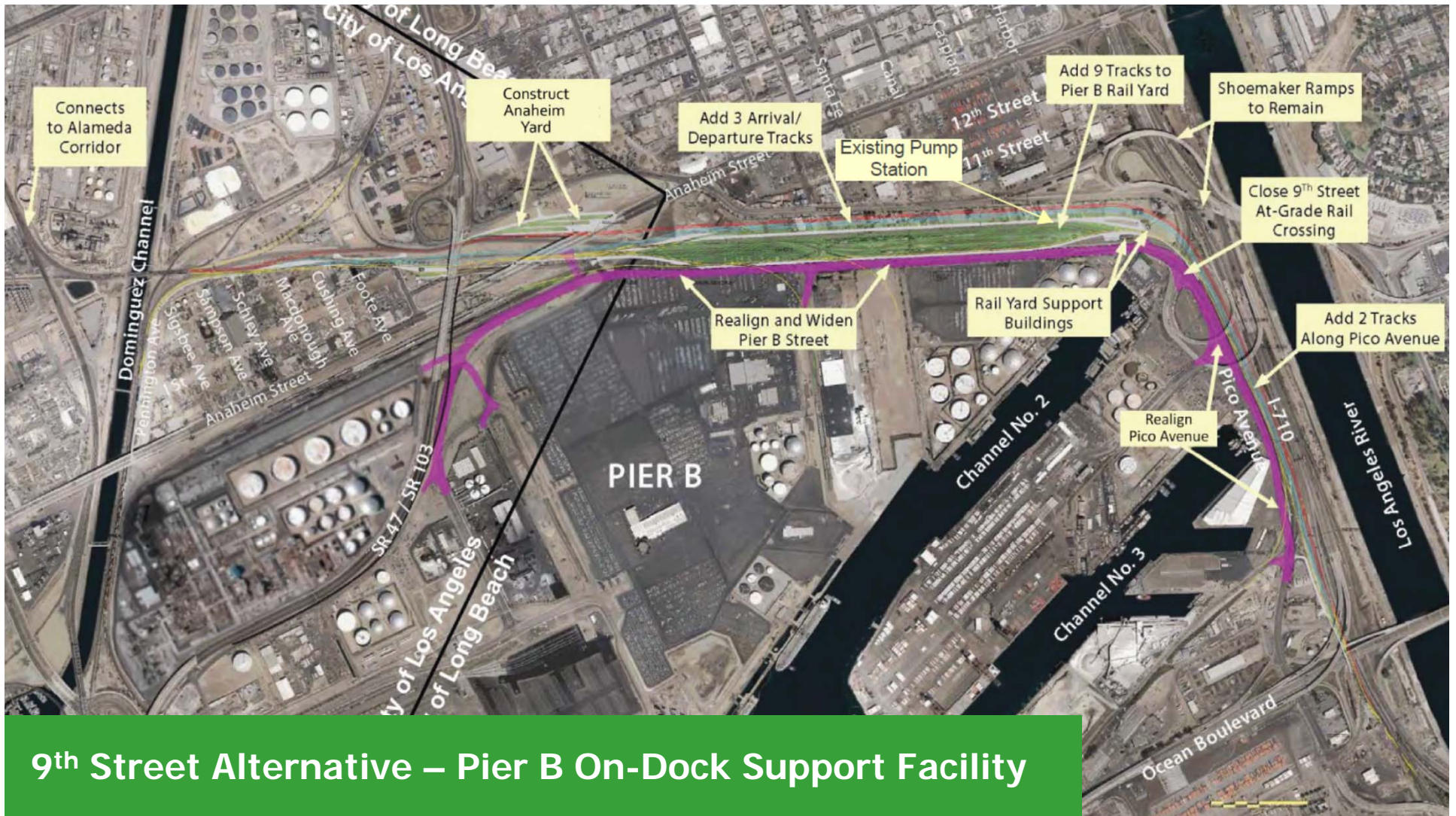


10<sup>th</sup> Street Alternative – Pier B On-Dock Support Facility

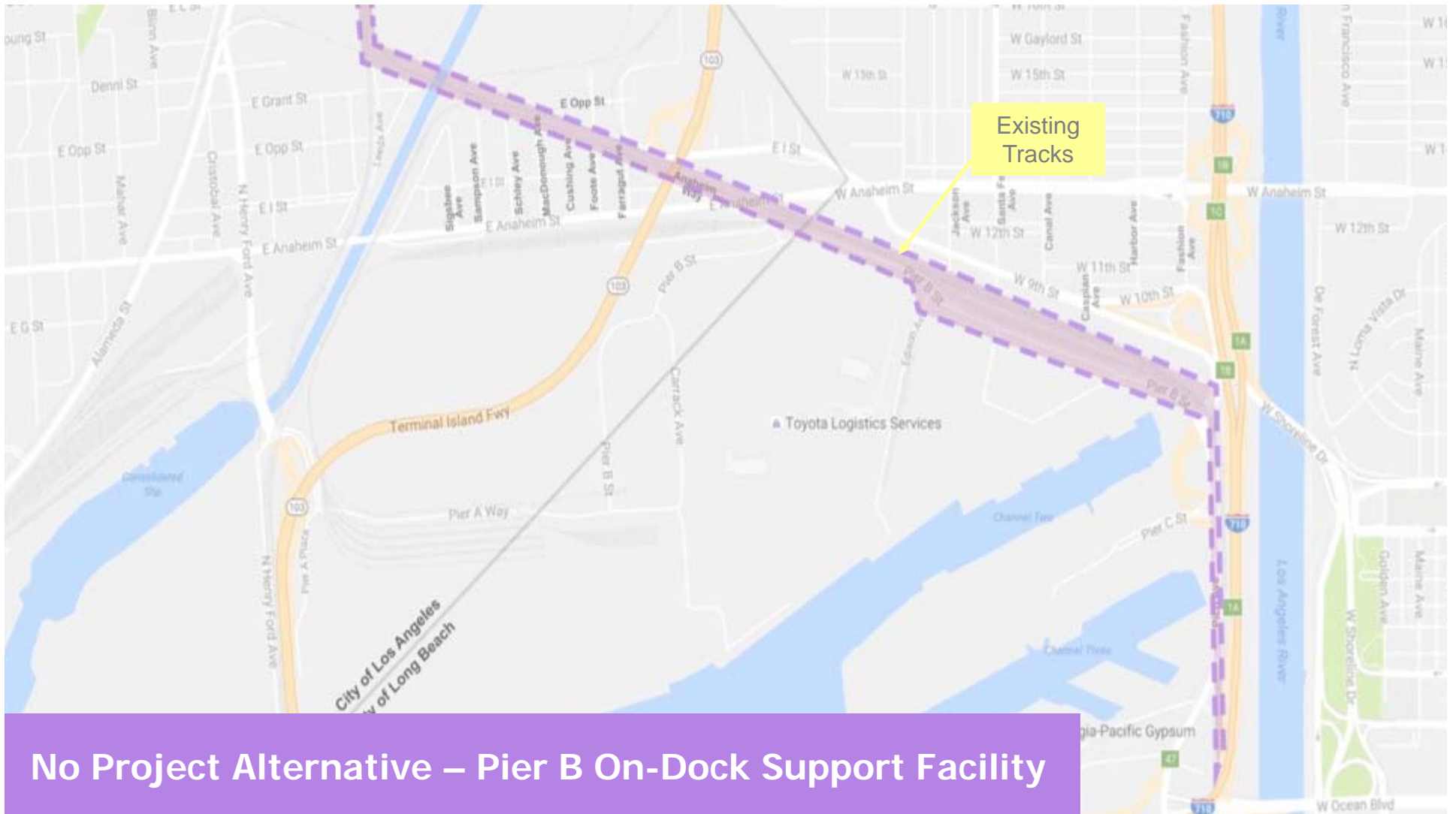












No Project Alternative – Pier B On-Dock Support Facility

Pier B On-Dock Rail Support Facility

# Potentially Significant Impacts

---

- Air Quality
- Biota and Habitats
- Cultural Resources
- Global Climate Change

Port of **LONG BEACH**

# Pier B On-Dock Rail Support Facility

## Mitigation Measures

---

- **Air Quality**
  - Construction Best Management Practices
  - Contribution to Community Grants Program
- **Biota and Habitats**
  - Protection of bats and migratory birds
- **Cultural Resources**
  - Paleontological monitoring and response measures
- **Global Climate Change**
  - Sustainable Design Features, Recycling, Tree Planting, Carpooling
  - Contribution to Community Grants Program

Port of **LONG BEACH**



Pier B On-Dock Rail Support Facility

# Potentially Significant After Mitigation

---

- **Air Quality**

- Project Construction and Operation: CO, NO<sub>x</sub> emissions; NO<sub>2</sub> concentration
- Cumulative Construction and Operation: VOC, CO, NO<sub>x</sub>, PM<sub>10</sub>, PM<sub>2.5</sub>, SO<sub>x</sub> emissions; NO<sub>2</sub>, PM<sub>10</sub>, PM<sub>2.5</sub> concentrations; Toxic Air Contaminants (Health Risk)

- **Global Climate Change**

- Project and Cumulative Construction and Operation: CO<sub>2</sub>e emissions

Pier B On-Dock Rail Support Facility  
**Public Comments**

---

- Property Acquisition, Compensation and Relocation
- Street Closures, Access to Downtown and the Port
- Air Quality Impacts
- Noise and Vibration Impacts

# Pier B On-Dock Rail Support Facility CEQA EIR Process

**Draft EIR Released**  
December 15, 2016

Extended  
Public Review and  
Comment Period  
through  
**March 13, 2017**

**Public Meetings**  
January 11 & 18,  
February 15, 2017

Silverado Park,  
POLB Interim  
Administrative Offices,  
Tepechi Restaurant

**Release  
Final EIR**  
January 12, 2018

Includes all  
comments and  
responses on  
Draft EIR

**Public Hearing  
and Decision  
on Final EIR**  
January 22, 2018

Board of Harbor  
Commissioners  
considers  
proposed project  
and certification  
of EIR

Port of **LONG BEACH**



Pier B On-Dock Rail Support Facility

# Staff Recommendations

---

- Certify the Final Environmental Impact Report, Application Summary Report, Findings of Fact, Statement of Overriding Considerations, and Mitigation Monitoring and Reporting Program
- Approve the Proposed Pier B On-Dock Rail Support Facility Project and a Level III Harbor Development Permit

# Public Comment

Port of **LONG BEACH**

19

LONG BEACH BOARD OF HARBOR COMMISSIONERS  
JANUARY 22, 2018

# PIER B ON-DOCK RAIL SUPPORT FACILITY

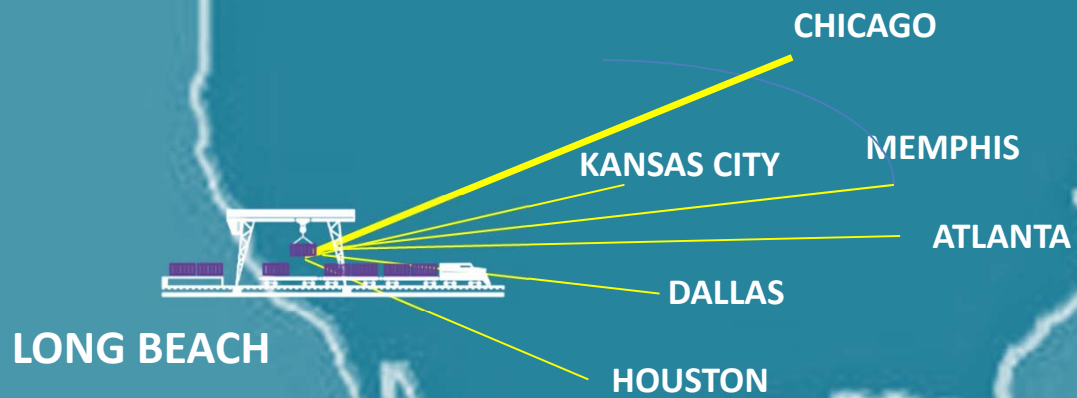
MARIO CORDERO  
EXECUTIVE DIRECTOR

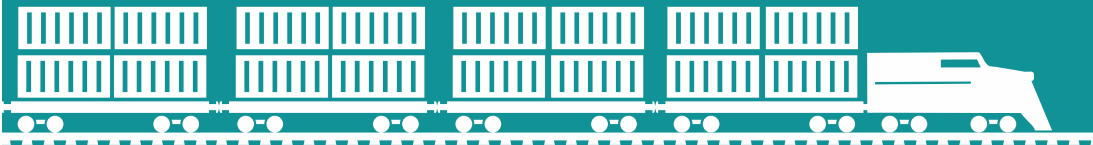




# Most Connected

Access to Major U.S. Rail Hubs





ONE =  
TRAIN



750

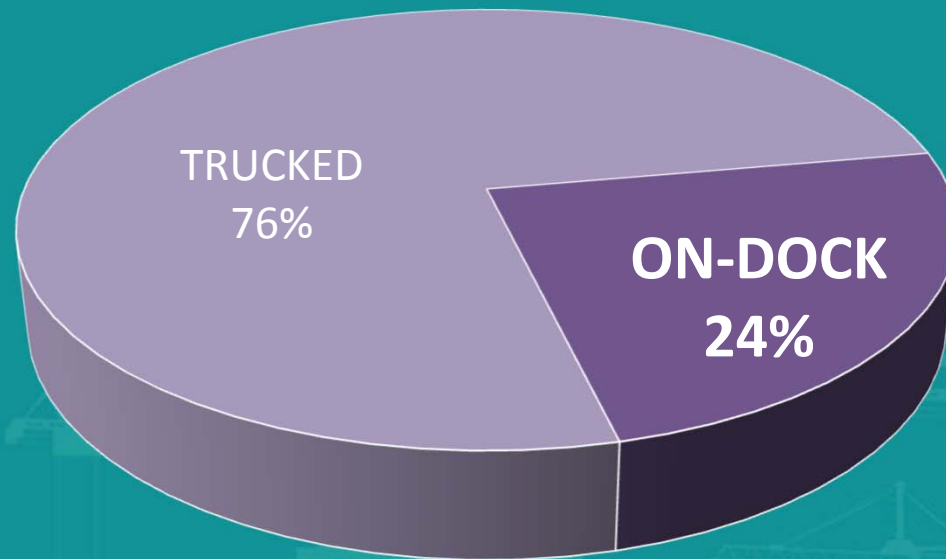
Truck trips eliminated by one  
double-stacked on-dock train



Port of  
**LONG BEACH**  
The Green Port

# On-Dock Rail Today

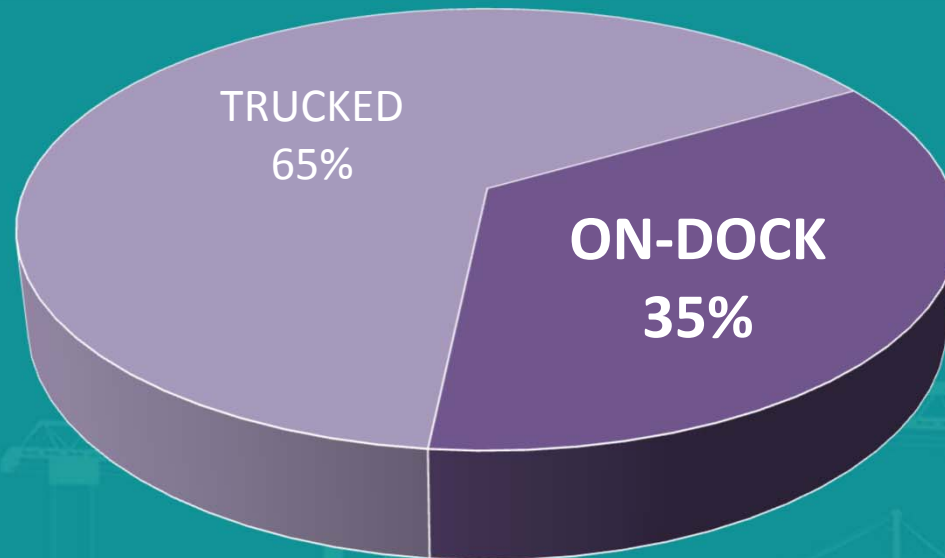
Vast Majority of Cargo Trucked Out of the Port



Port of **LONG BEACH**

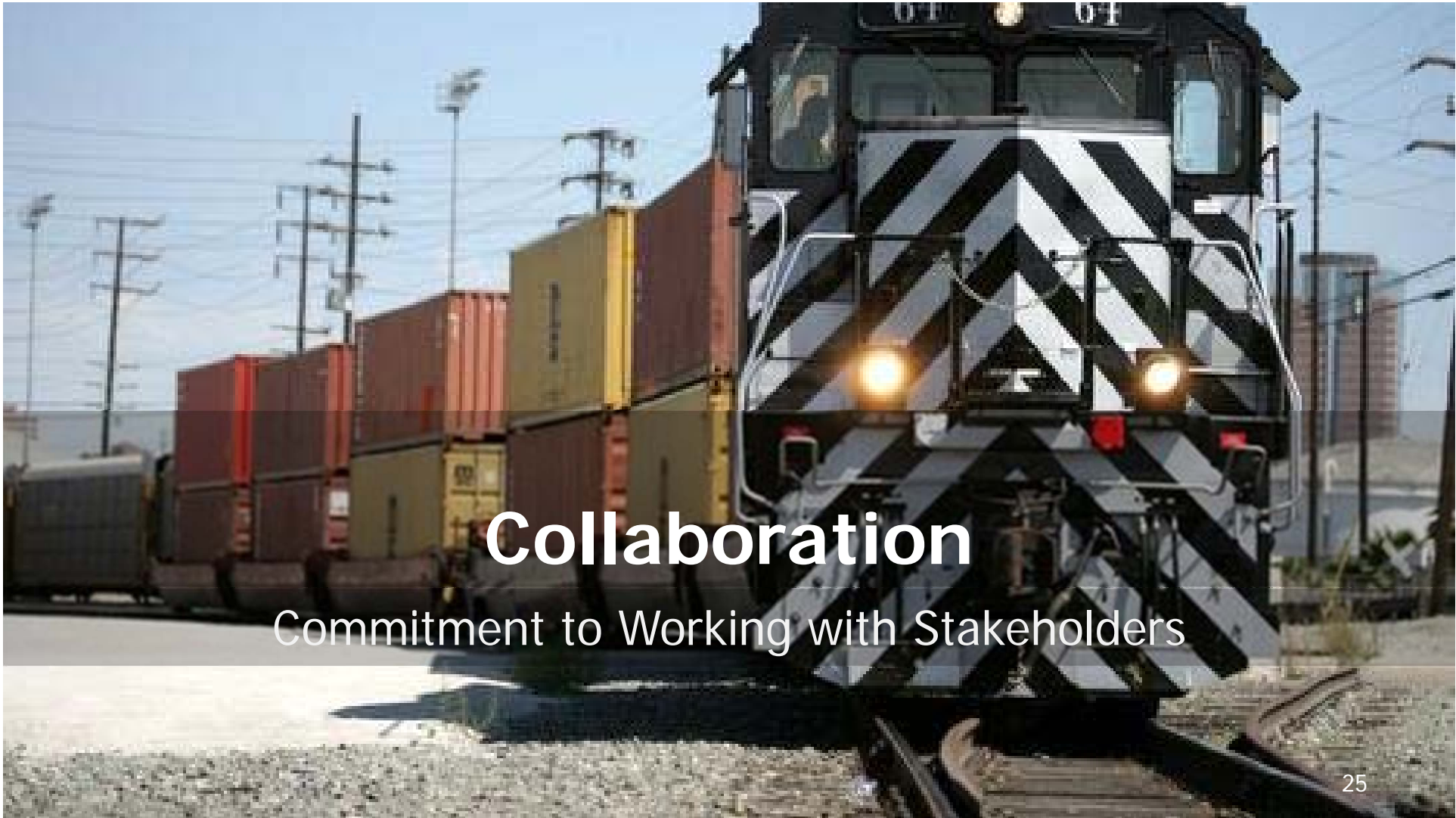
# Grow On-Dock Rail

Clean Air Action Plan Calls for At Least One-Third Rail



Port of **LONG BEACH**





# Collaboration

Commitment to Working with Stakeholders

LONG BEACH BOARD OF HARBOR COMMISSIONERS

JANUARY 22, 2018

PIER B ON-DOCK RAIL SUPPORT FACILITY  
**NEXT STEPS**

SEAN GAMETTE  
MANAGING DIRECTOR  
ENGINEERING SERVICES

Port of **LONG BEACH**

26

## Pier B On-Dock Rail Support Facility

# Next Steps

---

- Form cross-divisional delivery team
- Present a Baseline Program Budget for Board consideration by May
- Engage stakeholders including property owners and businesses
- Eliminate existing at-grade railroad crossing at 9<sup>th</sup> Street & Pico Ave.
- Relocate utilities
- Move ahead with designs

Pier B On-Dock Rail Support Facility

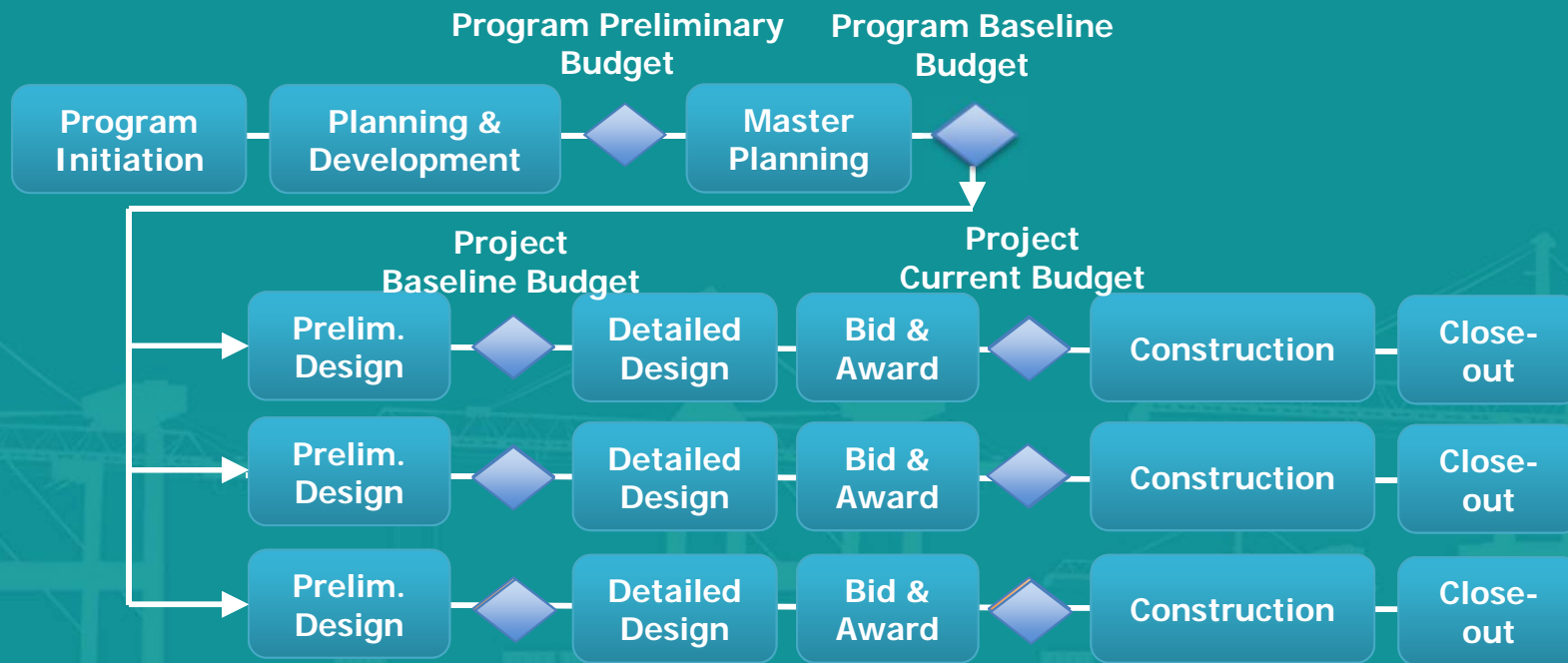
# Potential Next Board Actions

---

- Adopt a Program Baseline Budget
- Authorize Spending on the Program
- Authorize Professional Service Contracts for Design
- Authorize Right-of-Way Acquisition

Port of **LONG BEACH**

# Pier B On-Dock Rail Support Facility Program Delivery Gateway Approval



Port of LONG BEACH



# Review by City Attorney

Port of **LONG BEACH**

30

# Board Discussion and Action

Port of **LONG BEACH**

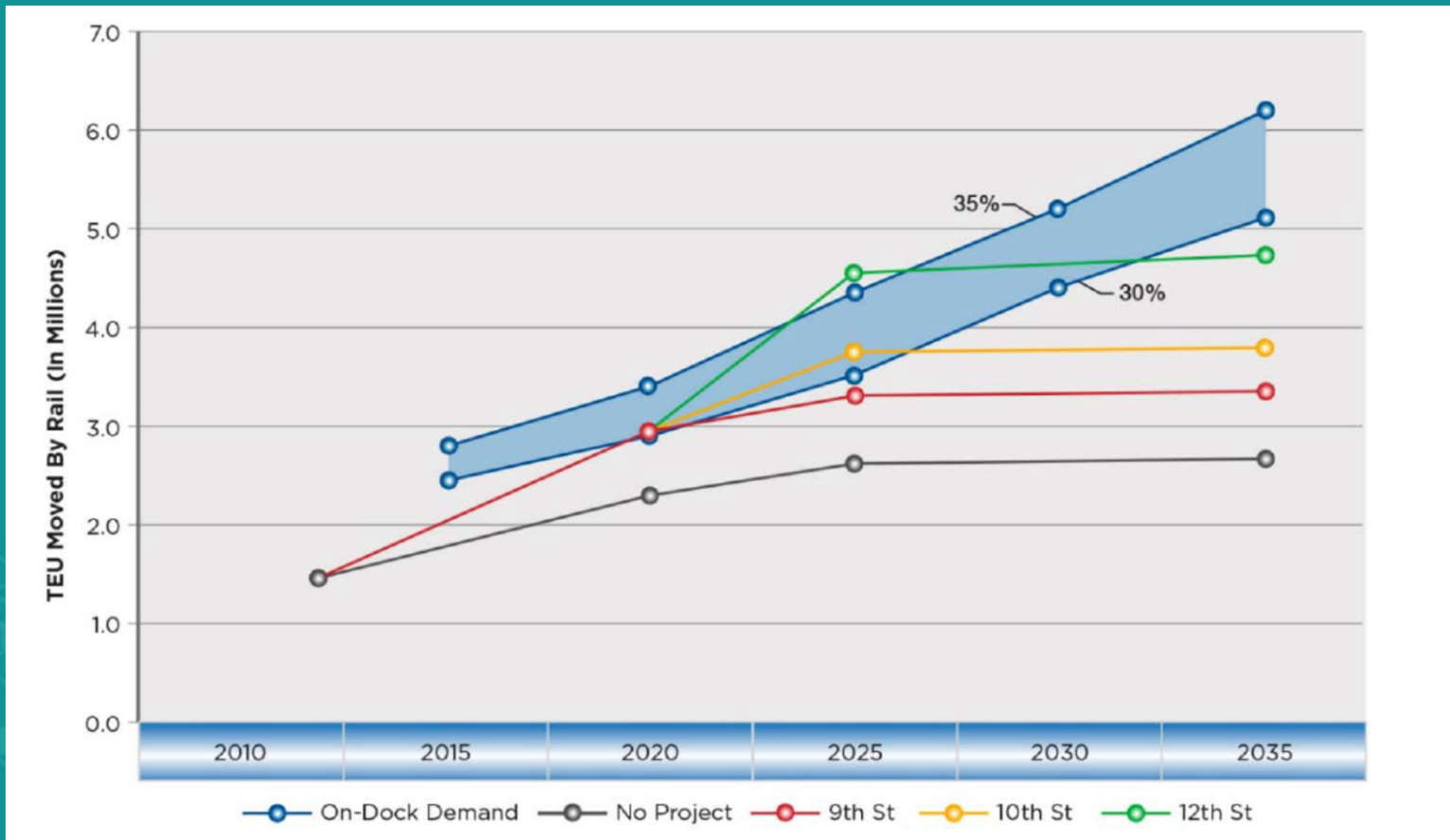
31

# Additional Slides

Port of **LONG BEACH**

32

## Effectiveness of Alternatives in Achieving 30 - 35% of Cargo via On-Dock



Port of LONG BEACH