

## Airport Advisory Commission

**Katie Larson**  
Chair

**Robert L. Allarte**  
Vice Chair

**Jeffrey Anderson**

**Christine Bos**

**Wayne Chaney Sr.**

**Mireya LaFarga**

**Miles Nevin**

**Geetanjali Reuben**

**Dede Rossi**

## Airport Management

**Cynthia Guidry**  
Director

**Juan López-Ríos**  
Deputy Airport Director

**Ken Mason**  
Executive Assistant

**Claudia Lewis**  
Manager of Administration  
& Finance

**Ron Reeves**  
Airport Operations & Facilities  
Manager

**Ambi Thurai**  
Engineering Officer

**Dale Worsham**  
Development Services Officer

**Karl Zittel**  
Airside Operations Officer

**Matthew Brookes**  
Airport Properties Officer

**Scott Garrett**  
Facilities Management Officer

**Mony Chhey**  
Financial Services Officer

**Scott Korobkin**  
Superintendent of Safety and  
Security

**Kate Kuykendall**  
Public Affairs Officer

**Ryan McMullan**  
Noise & Environmental Affairs  
Officer



**long beach**  
airport



# Long Beach Airport Monthly Noise Report June 2022

**COMMERCIAL AIRCRAFT LATE NIGHT ACTIVITY**  
**LGB Current Month & Calendar Year-To-Date Statistics (10 PM- 7AM)**  
**June 2022**

June				Calendar Year-To-Date		
10PM - 11PM Activity	2022	2021	Change	2022	2021	Change
<b>Air Carrier &amp; Commuter Operations</b>	<b>2,640</b>	<b>2,088</b>	<b>26.4%</b>	<b>15,861</b>	<b>10,767</b>	<b>47.3%</b>
American/Mesa/SkyWest/Envoy	0	0		0	1	-100.0%
Delta/SkyWest Airlines	7	0	100.0%	16	5	220.0%
Hawaiian Airlines	0	0		1	1	0.0%
Southwest Airlines	2	7	-71.4%	17	11	54.5%
UPS	0	0		1	1	0.0%
<b>Subtotal 10PM-11PM</b>	<b>9</b>	<b>7</b>	<b>28.6%</b>	<b>35</b>	<b>19</b>	<b>84.2%</b>
11PM- 7AM Activity	2022	2021	Change	2022	2021	Change
American/Mesa/SkyWest/Envoy	0	0		0	0	
Delta/SkyWest Airlines	0	0		0	0	
Hawaiian Airlines	0	0		2	0	100.0%
Southwest Airlines	1	0		2	0	100.0%
UPS	0	0		0	1	-100.0%
<b>Subtotal 11PM-7AM</b>	<b>1</b>	<b>0</b>	<b>100.0%</b>	<b>4</b>	<b>1</b>	<b>300.0%</b>
<b>TOTAL</b>	<b>10</b>	<b>7</b>	<b>42.9%</b>	<b>39</b>	<b>20</b>	<b>95.0%</b>

Notes:

0.4% (10 of 2,640) of total commercial operations occurred between 10pm - 7am.

0.3 flights - Nightly average for all late night (10:00 PM—7:00 AM) commercial flights, includes unanticipated delays.

0.03 flights - Nightly average for commercial flights after 11 PM.

<b>AIRPORT NOISE VIOLATIONS</b>						
<b>LGB Current Month &amp; Calendar Year-To-Date Statistics</b>						
<b>June 2022</b>						
<b>June</b>				<b>Calendar Year-To-Date</b>		
<b>Air Carrier Noise Violations</b>	<b>2022</b>	<b>2021</b>	<b>Change</b>	<b>2022</b>	<b>2021</b>	<b>Change</b>
American/Mesa/SkyWest/Envoy	0	0		0	0	
Delta/SkyWest Airlines	0	0		0	0	
Hawaiian Airlines	0	0		1	0	100.0%
Southwest Airlines	0	0		0	0	
UPS	0	0		0	1	-100.0%
<b>Subtotal</b>	<b>0</b>	<b>0</b>		<b>1</b>	<b>1</b>	<b>0.0%</b>
<b>Commuter Noise Violations</b>	<b>2022</b>	<b>2021</b>	<b>Change</b>	<b>2022</b>	<b>2021</b>	<b>Change</b>
American/Mesa/SkyWest/Envoy	0	0		0	0	
Delta/SkyWest Airlines	0	0		0	0	
<b>Subtotal</b>	<b>0</b>	<b>0</b>		<b>0</b>	<b>0</b>	
<b>Non-Commercial Noise Violations</b>	<b>2022</b>	<b>2021</b>	<b>Change</b>	<b>2022</b>	<b>2021</b>	<b>Change</b>
All GA, Charter & Other	10	17	-41.2%	42	76	-44.7%
<b>TOTAL</b>	<b>10</b>	<b>17</b>	<b>-41.2%</b>	<b>43</b>	<b>77</b>	<b>-44.2%</b>
<b>Monetary Fines</b>	<b>2022</b>	<b>2021</b>		<b>2022</b>	<b>2021</b>	
Airport Surcharges	\$0	\$600		\$400	\$2,100	
Consent Decree	\$0	\$0		\$0	\$0	
<b>TOTAL</b>	<b>\$0</b>	<b>\$600</b>		<b>\$400</b>	<b>\$2,100</b>	

<b>AIRPORT OPERATIONS</b>						
<b>LGB Current Month &amp; Calendar Year-To-Date Statistics</b>						
<b>June 2022</b>						
<b>June</b>				<b>Calendar Year-To-Date</b>		
<b>Airport Operations (FAA)</b>	<b>2022</b>	<b>2021</b>	<b>Change</b>	<b>2022</b>	<b>2021</b>	<b>Change</b>
Air Carrier + Commuter Carriers	2,640	2,088	26.4%	15,861	10,767	47.3%
Air Taxi + General Aviation	24,467	28,521	-14.2%	154,732	157,757	-1.9%
Military Operations	85	124	-31.5%	592	594	-0.3%
<b>Total Aircraft Operations</b>	<b>27,192</b>	<b>30,733</b>	<b>-11.5%</b>	<b>171,185</b>	<b>169,118</b>	<b>1.2%</b>

Notes:

0.04% (10 of 27,107) of the Airport's total aircraft operations (Commercial & GA) resulted in an aircraft noise violation.  
0.0% (0 of 2,640) of the Airport's Commercial operations (Commercial & Commuter) resulted in an aircraft noise violation.

# AIRCRAFT NOISE VIOLATORS

## June 2022

OWNERNAME	DATE	TIME	A/D	RWY	FLIGHT #	A/C TYPE	ORIG/DEST	SEL	LIMIT	STATUS
Private	6/1/2022	19:59:47	T	26R		C152		n/a	n/a	VIO
Private	6/4/2022	16:30:50	T	26L		SLG2		n/a	n/a	VIO
Maviate US Asset Inc.	6/4/2022	23:26:06	A	30		S22T		81.5	79.0	VIO
Sunrise Aviation Co	6/5/2022	15:16:30	T	26R		EVSS		n/a	n/a	VIO
Wing Aviation Group LLC	6/10/2022	23:53:34	A	30		GLF4		88.6	79.0	VIO
Four Brothers 2 LLC	6/17/2022	22:34:58	D	30		GLEX		92.7	90.0	VIO
Westwind School of Aeronautics Phoenix LLC	6/19/2022	1:17:23	T	30		C172		83.3	79.0	VIO
Private	6/20/2022	19:08:00	T	26L		C172		n/a	n/a	VIO
N790CJ LLC	6/24/2022	23:32:57	A	30		GLF4		88.9	79.0	VIO
TBN Group LLC	6/30/2022	6:25:01	A	30		C56X		92.3	90.0	VIO

**DEFINITIONS:**

**A/C Type** — Aircraft Type

**SEL**—SENEL—Single Event Noise Exposure Level (dBA)

**A** — Arrival

**T**—Touch and Go

**D** — Departure

**VIO**—Violation

**RWY** — Runway

## AIR CARRIER NOISE BUDGET PERFORMANCE

July 2021 - June 2022

RMT #	NOISE BUDGET	ACTUAL	PERCENT BUDGET USED
9	70.7	36.7	51.9%
10	84.6	54.3	64.2%

Source: Long Beach Airport Staff Calculations

### DEFINITIONS:

**RMT** — Remote Monitoring Terminal

## TOTAL NOISE BUDGET PERFORMANCE

July 2021 - June 2022

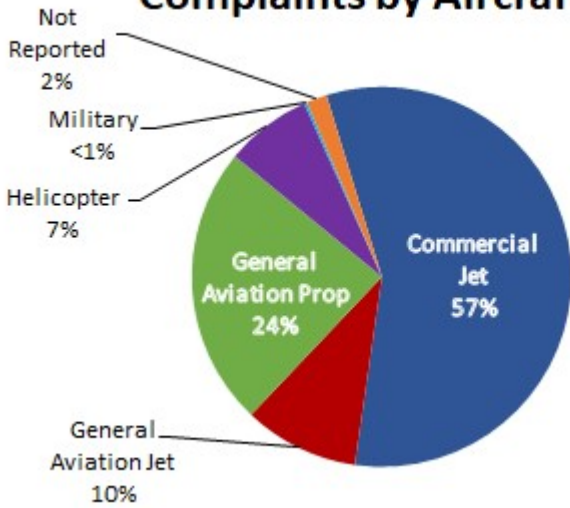
RMT #	NOISE BUDGET	ACTUAL	PERCENT BUDGET USED
9	102.7	46.5	45.3%
10	120.9	67.0	55.4%

Source: Long Beach Airport Staff Calculations

# LGB AIRCRAFT NOISE COMPLAINTS

## June 2022

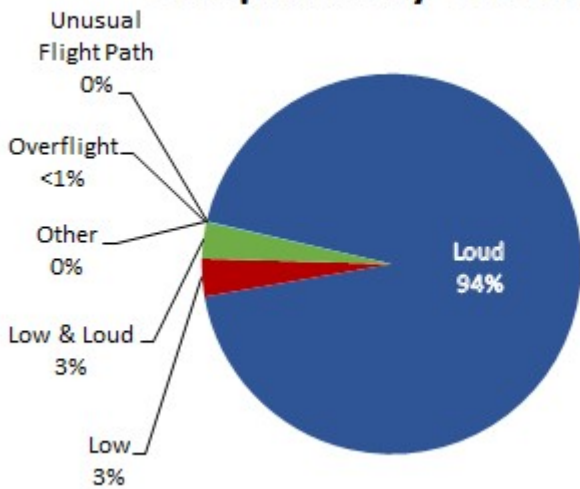
### Complaints by Aircraft Types



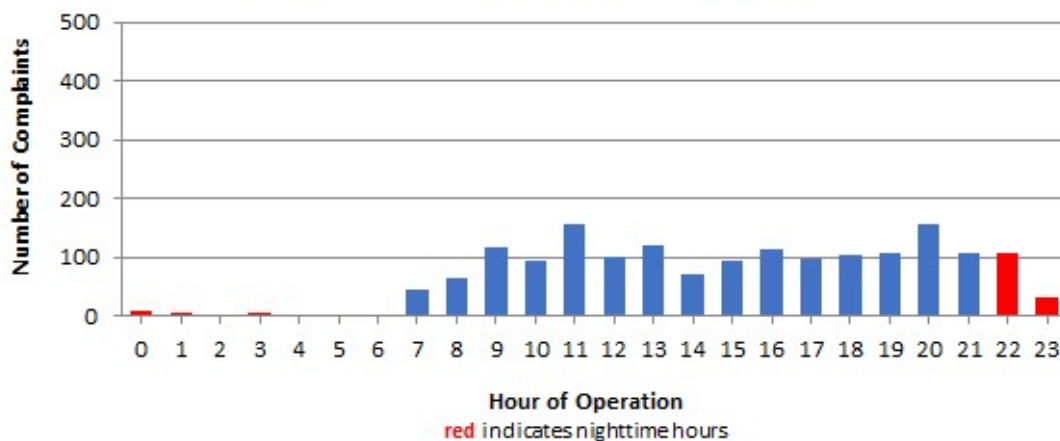
### Complaints by Zip Code

Zip Code	Complaints	Units
90242	2	1
90254	2	1
90278	62	1
90712	2	1
90746	8	1
90802	1	1
90803	1	1
90805	1	1
90807	206	39
90808	28	9
90813	5	1
90814	1	1
91364	1	1
92626	416	1
92627	3	1
92647	660	2
92648	296	10
92649	10	3
92660	2	2
92661	2	1
Not Reported	5	5
<b>Grand Total</b>	<b>1,714</b>	<b>84</b>

### Complaints by Concern



### Complaints by Time of Operation





# long beach airport



## Long Beach Airport

4100 E. Donald Douglas Drive, Long Beach, CA 90808

[www.lgb.org](http://www.lgb.org) • [lgbapt@longbeach.gov](mailto:lgbapt@longbeach.gov)

Administration • (562) 570-2619