



Building A Better Long Beach

June 7, 2010

REDEVELOPMENT AGENCY BOARD MEMBERS
City of Long Beach
California

RECOMMENDATION:

Approve and authorize the Executive Director to transfer inventory from 240 Long Beach Boulevard to the ArtExchange. (Downtown – District 1)

DISCUSSION

On April 21, 2008, the Redevelopment Agency (Agency) authorized the purchase of property located at 240 Long Beach Boulevard and the business commonly known as Acres of Books.

Although the previous owner held a series of sales before closing the business, many books and wooden fruit crates remained in the building and became the property of the Agency when it took possession in October 2008. Since that time, staff has inventoried the items in the building and attempted to consolidate them. Staff recommends that the inventory of approximately 30,000 books and 1,500 fruit crates be transferred to the Art Exchange Visual Arts Center, Inc (ArtExchange), a non-profit corporation established to operate the future Art Exchange cultural arts facility at this location. The ArtExchange intends to hold a series of fundraising events and would like to offer the books and crates up for sale or in exchange for a charitable contribution.

This effort provides a way for people to own a piece of the historic Acres of Books and support recycling efforts by reusing materials. The Agency will be responsible to disposing of any surplus materials that the ArtExchange is unable to sell or donate.

SUGGESTED ACTION:

Approve recommendation.

Respectfully submitted,

AMY J. BODEK
EXECUTIVE DIRECTOR

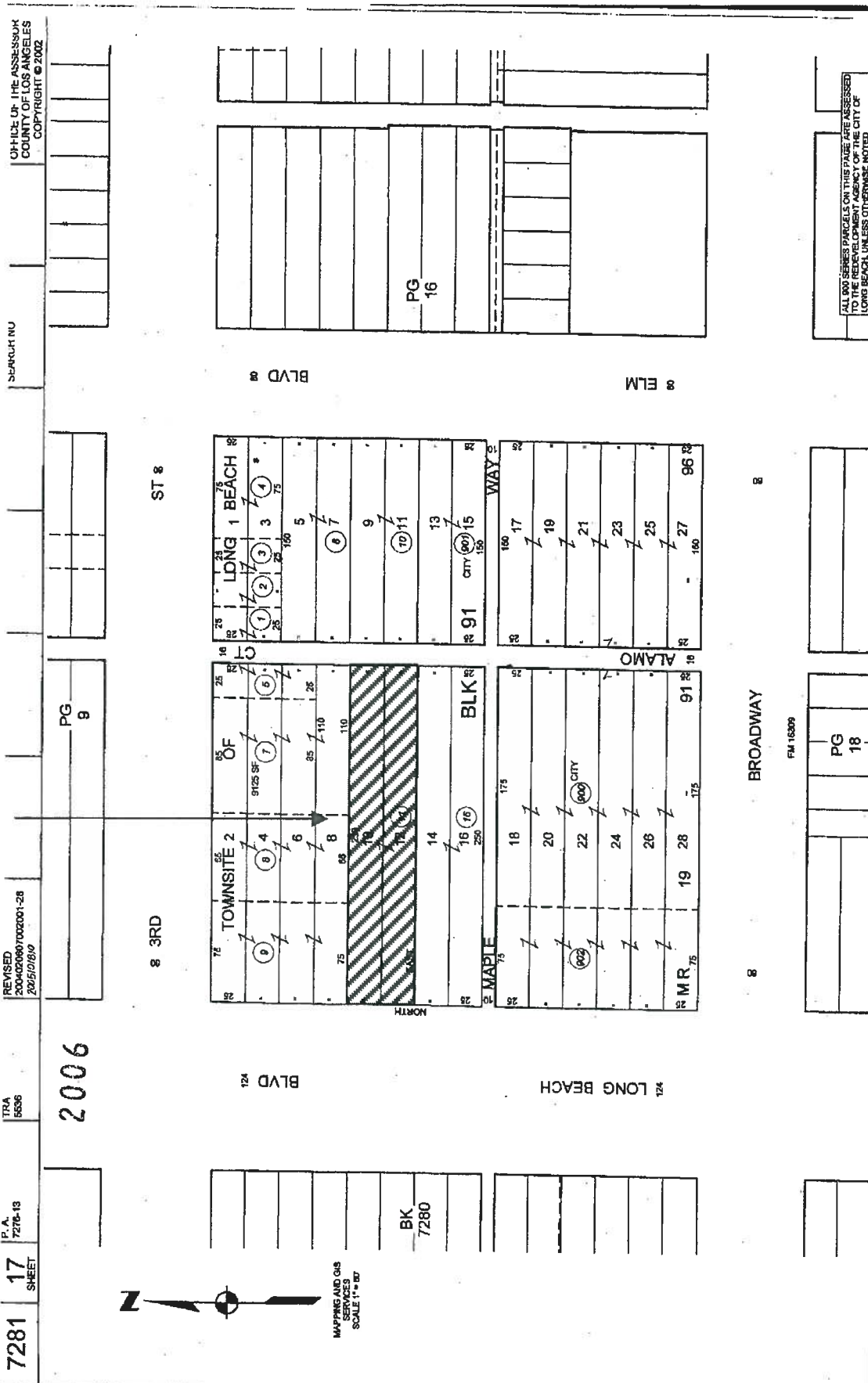
AJB:CSM:BEC

Attachment: Exhibit A – Site Map

THE CITY OF LONG BEACH REDEVELOPMENT AGENCY

EXHIBIT A

County of Los Angeles: **u**erbach, Assessor
SITE



7281 17 SHEET

P.A. 7276-13

TRA 5636

2006

REVISIONS:
 2004/09/09/000001-28
 2005/08/00

PG 9

ST 8

BLVD 124

PG 16

ELM 8

BROADWAY 8

PG 18

PG 9

ST 8

BLVD 124

PG 16

ELM 8

BROADWAY 8

PG 18

PG 9

ST 8

BLVD 124

PG 16



MAPPING AND GIS
 SCALE 1" = 87'

ALL 900 SERIES PARCELS ON THIS PAGE WERE ASSESSED TO THE REDEVELOPMENT AGENCY OF THE CITY OF LONG BEACH, UNLESS OTHERWISE NOTED

FM 16309

OFFICE OF THE ASSESSOR
 COUNTY OF LOS ANGELES
 COPYRIGHT © 2002