

SOS
SHELTER ON
SHIP


ENRICHED TRIAGE
CENTER FOR THE
UNHOUSED



Joe R. Gatlin
Founder/Vice President
NAACP Branch 1069

Emergency Declaration

- Community Leader Praises Effective and Immediate Action
- In response to the Emergency Declaration on Homelessness, Los Angeles Mayor Karen Bass, Long Beach Mayor Rex Richardson, and Chair of the Los Angeles County Board of Supervisors Janice Hahn, have prioritized and are jointly committed to addressing the unhoused crisis in a meaningful, caring and urgent way.
- We are proud to propose the Shelter on Ship (SOS) program. We applaud, outside of the box thinking. This type of innovation and immediate response is the reason these leaders were elected. This ship and others like it will provide immediate and safe refuge for thousands of unhoused community members within 60-90 days, shelter, meals, and assessment(s) can be accomplished at a fraction of the cost and time.
- The current housing solutions are costly, time consuming and have not provided real permanent solutions. The SOS pathway for immediate housing will allow the time required to build boxable housing villages and other permanent housing.
- We encourage our leaders to embrace this proposed opportunity for a new promise and hope for our most vulnerable and displaced members of our community in Los Angeles County. It is with pride and compassion the San Pedro, Wilmington, Palos Verdes, NAACP Branch 1069 endorses the Shelter on Ship Program."



SOS Partners- Los Angeles based known service providers

- **Westly Health Centers** – a federally qualified health center with HRSA designation, the mission of JWCH Institute is to improve the health status and well being of under served segments of the population of the Los Angeles area.
- **Gateways Hospital and Mental Health Center** -GWMHC has been serving Los Angeles since 1953 providing qualified healthcare with GWMHC professionals treating all mental health condition and services for children, adolescents, transitional aged youth and adults.
- **Mission Art Health LLC** - LA- Based agency providing access to veteran family resources through 501(c)3 nonprofit NAVIGATOR USA, New Day USA, and Pentagon Federal Credit Union Coordinates with veteran's service providers for unhoused LA Veterans to access the SOS program.
- **UNITE HERE Local 11**- Represents 32,000 workers employed in hotels, restaurants, airports, sports arenas and convention centers throughout Southern California.
- **City of South Gate**- Helping hands for the Unhoused
- **HOPE of the Valley Rescue Mission**- Hope mission is to prevent , reduce, and eliminate poverty, hunger, and homelessness. A faith based 501(c) (3) nonprofit organization that does not discriminate based on gender, age, ethnicity, sexual orientation, religious affiliation, or lack thereof.
- **Community Colleges of Los Angeles** - With 9 campuses in one of the most diverse cities in the world, the Community Colleges of Los Angeles offer a smarter path to an education that can *take you anywhere*.
- **MAOF -Mexican American Opportunity Foundation** - MAOF uses a multi-generational approach to uplift the whole family. We provide social services for infants through seniors across four pillars. Early child education services, and community partnership services.



Phase- 1 Interim Solution to Homeless Crisis

- **The utilization of a 1,500-, 3,500- or 5,000-person cruise ship** as temporary housing, evaluation, health, medical, training, and re-entry facility with full wrap around services to help families and those in need.
- **An alliance between the County of Los Angeles, City of Long Beach, and the City of Los Angeles** to combine their resources to streamline permitting requirements and fast track a berth allocation for a fully operational facility
- **SOS Partners will relocate vessel or vessels to POLB or POLA within 60-90 days** of executed charter agreement and work with wrap around service providers to phase in persons in need on a daily basis with initial ramp up period of 6-12 months for full occupancy



Addressing Unhoused Crisis Among Veterans

- **SOS partners will work with Veterans Peer Access Network (VPAN)** - the \$33m public/private partnership with LA County's Department of Mental Health to:
- Fast-track identification of single female veterans with children.
- SOS will coordinate with shelter and wrap-around services and with local Veteran Service Providers.
- Ensure that LA VETERANS engage a path towards permanent housing with dignity and independence.
- An alliance with national non-profit US VETS with Inglewood and Long Beach locations will help streamline supportive services, including workforce development and individualized support.



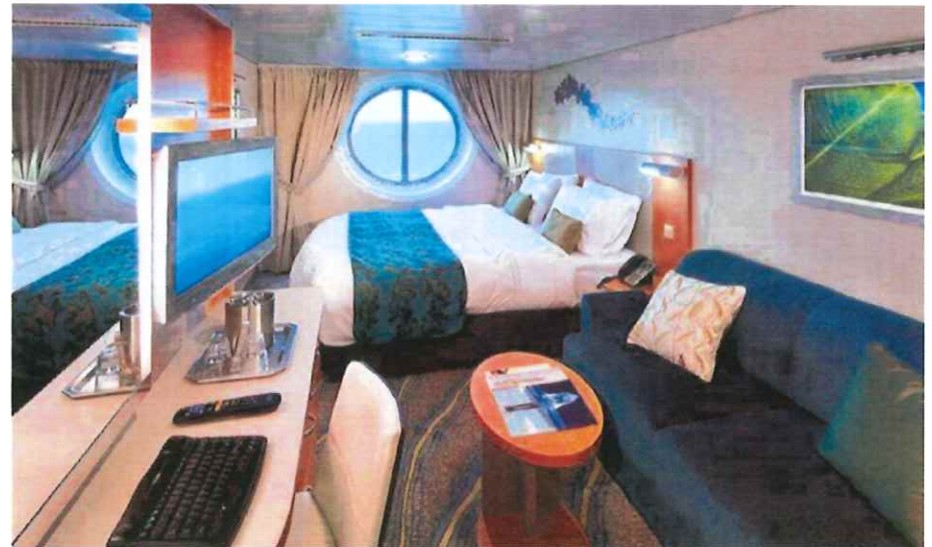
Partners

- **County of Los Angeles**
- **City of Long Beach**
- **City of Los Angeles**
- **City of South Gate**
- **NAACP National Association For The Advancement Of Colored People San Pedro/Wilmington/Palos Verdes Peninsula #1069**
- **ILWU - International Longshore and Warehouse Union Local 13**
- **ILWU International Longshore and Warehouse Clerks Union Local 63**
- **ILWU Longshore and Warehouse Union Local 94**
- **UNITE HERE Hotel & Hospitality Union Local 11**
- **Port of Los Angeles**
- **Port of Long Beach**

Vessel Arrangement 1500+ person

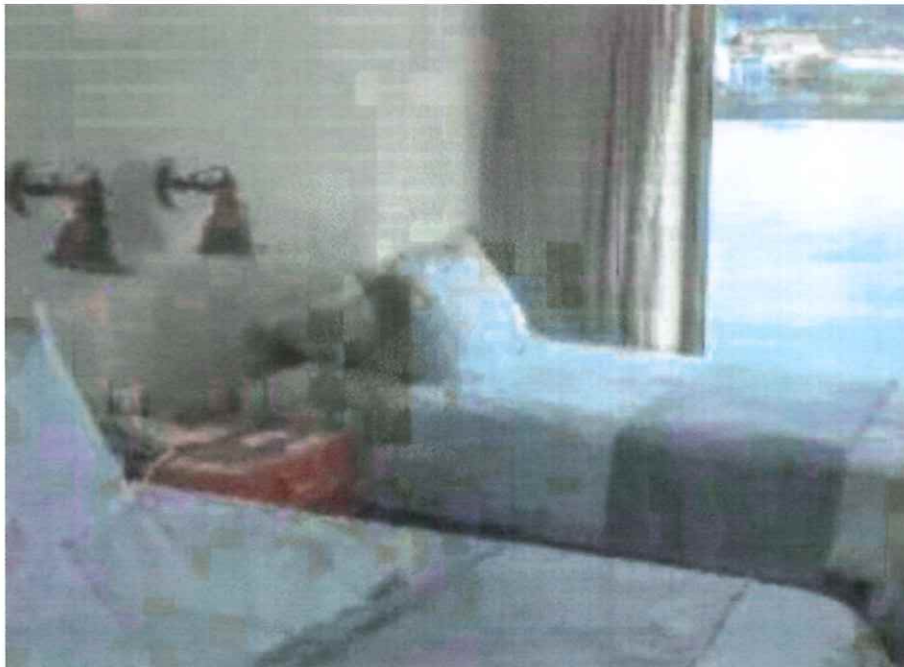


Vessel Arrangement



Confidential - Not for distribution

Vessel Arrangement



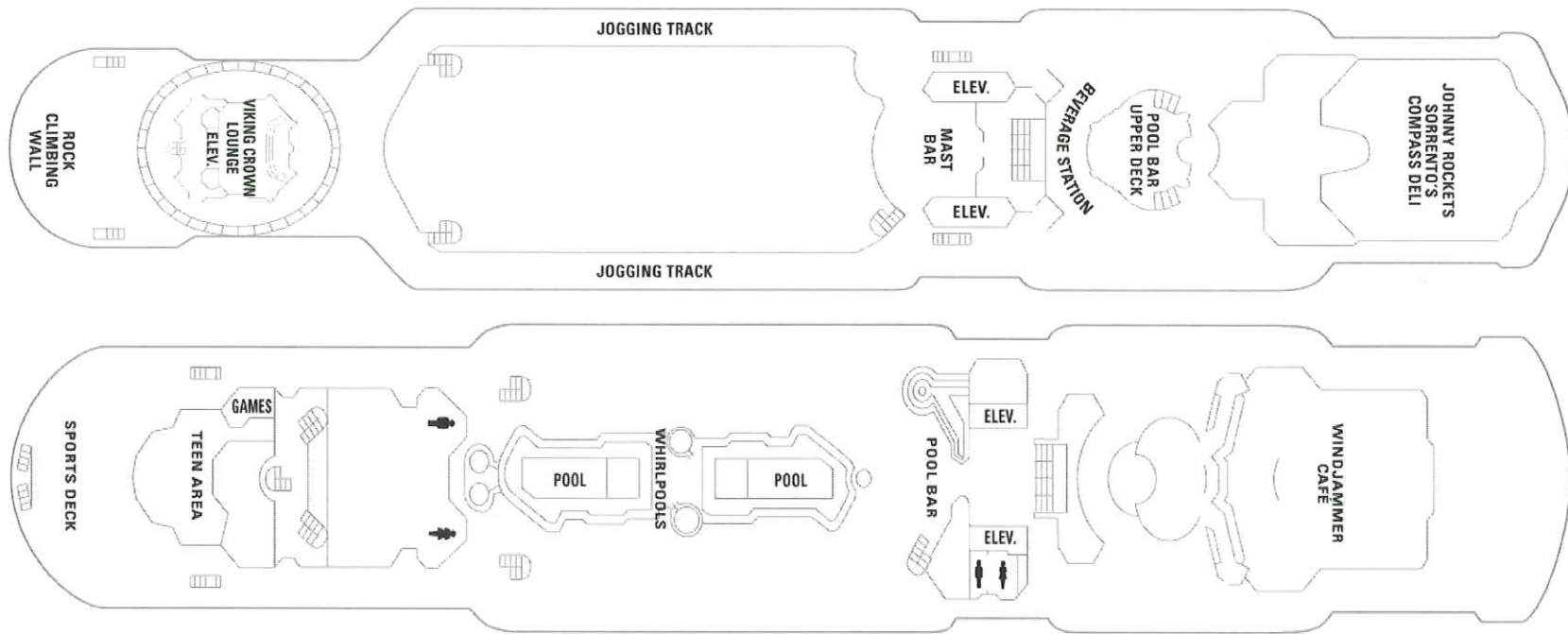
Confidential - Not for distribution

Vessel Arrangement



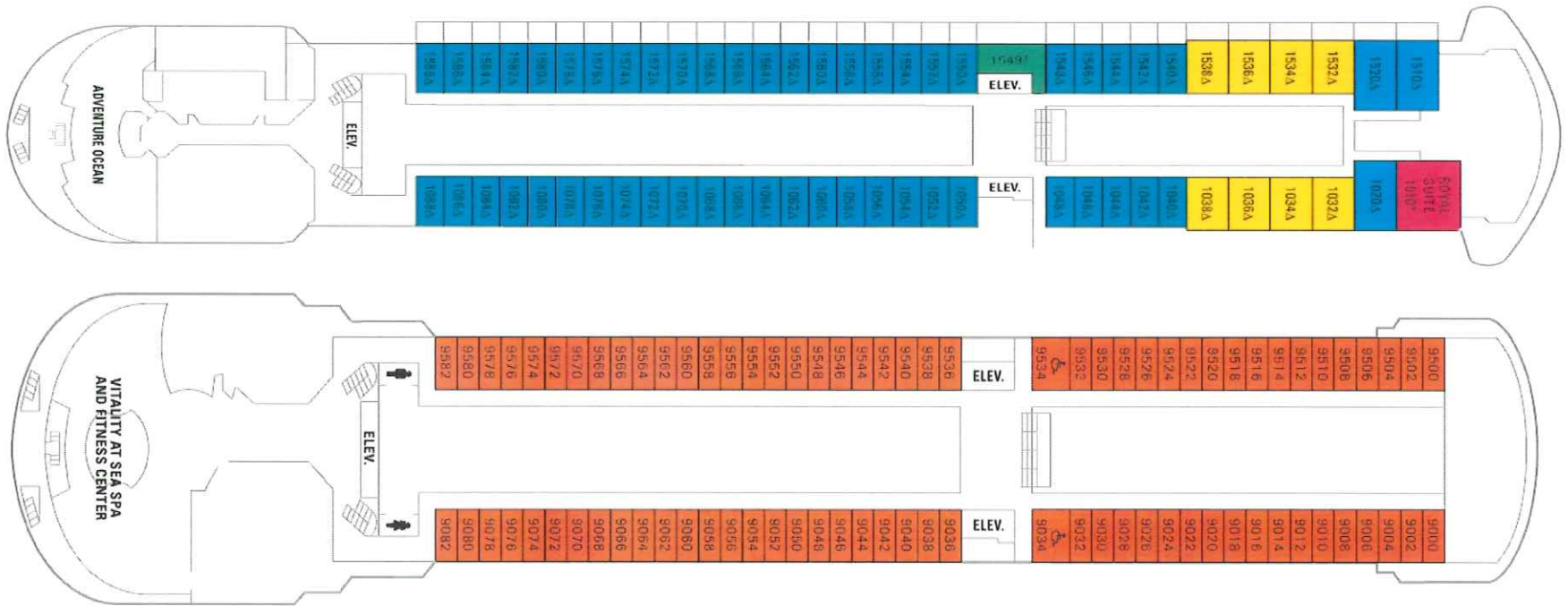
Confidential - Not for distribution

Vessel Arrangement and Specs



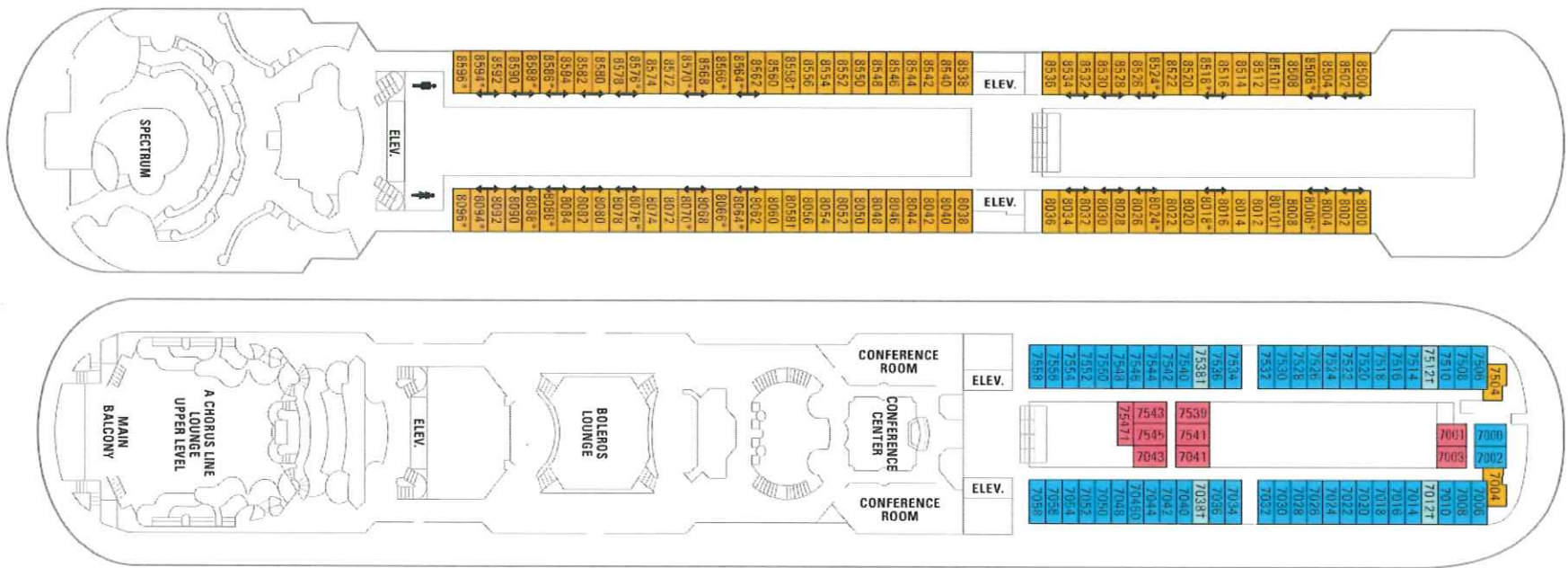
Confidential - Not for distribution

Vessel Arrangement and Specs

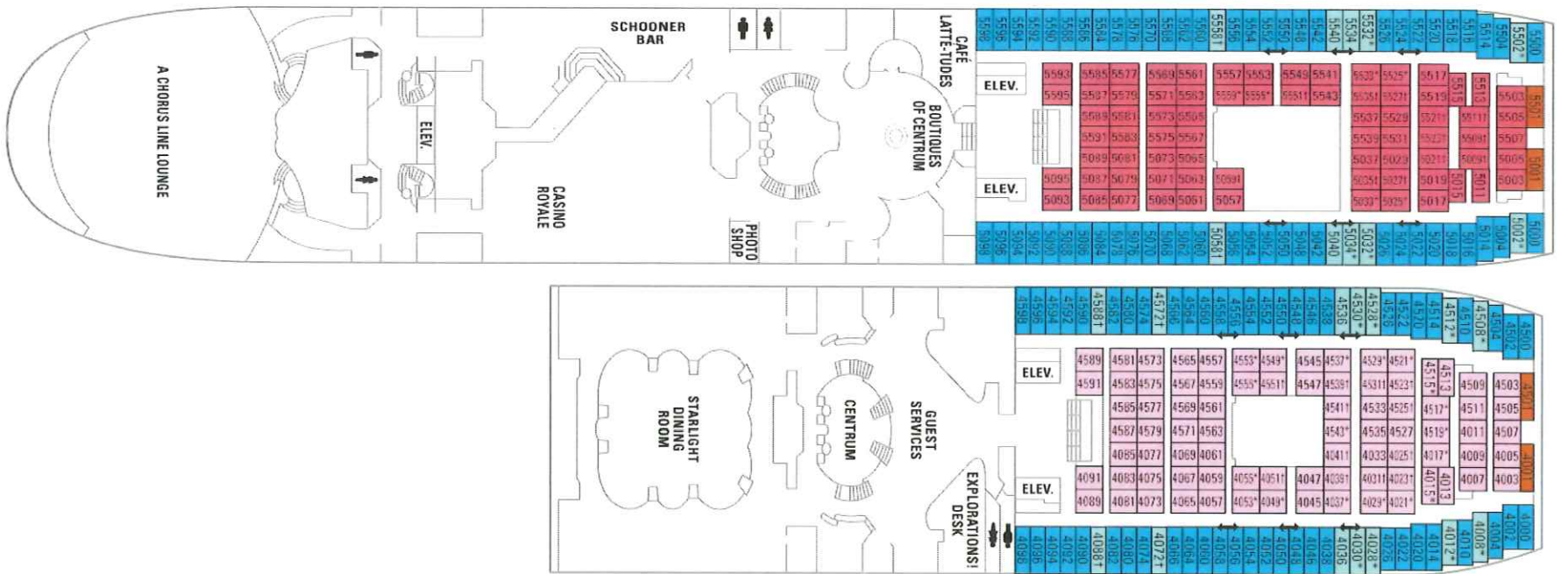


Confidential - Not for distribution

Vessel Arrangement and Specs



Vessel Arrangement and Specs



Confidential - Not for distribution

Vessel Specification

VESSEL SPECIFICATION	
CLASS	LR100A1
GROSS TONNAGE	55877
NET TONNAGE	26345
LIGHT SHIP	25022 (2015)
DISPL/NT	31.416,00
DEADWEIGHT	6.807
L.O.A	219,3 m
L.B.P	190,27 m
BREADTH mld	30,8
DRAFT	7,70 m
MAIN ENGINES DIESEL ELECTRIC PROPULSION	DIESEL ELECTRIC PROPULSION SULZER/WARTSILA 3X 127A40S / 2 X 8 ZA40S / 24000 KW
AUX. BOILERS	TWO OIL FIRED AALBORG 7 BAR
BOW THRUSTER	TWO BOW 2308 HP ONE STERN 2308 HP



Vessel Locations and Requirements: POLB & POLA

- POLA outer Harbor Berth 45-49 Cruise Ship Terminal, Miner Street, San Pedro
- POLB Pier Nimitz Road Pier T
- 1,000 ft of berthing required for each vessel
- Ample parking for shipping and receiving
- Power at Berth
- AMP, Shore-power, or approved emission control technology

Vessel Locations: POLB & POLA





Security and Safety Measures

- Black Knight Patrol or approved security company
- Installation of protective netting along vessel side & below decks
- Secure facility, Adhere to Homeland Security Administration & TSA requirements
- Local transportation services will be provided to transport persons wishing to disembark vessel in order to shop, Dr's visit, job training, other appointments, purchasing personal effect's, etc. Persons wishing to leave facility will be provided transportation to return them back to origin.
- Temporary lighting and power will be zero emission and used for perimeter power and lighting



Costs per Vessel

- Charter cost for 1500+ person vessel - \$35,000 USD per day with 36-month charter agreement.
- Operating Costs - \$45,000 - \$50,000 USD per day, cost for hoteling services, staff, food, kitchen facilities, laundry and maintenance, etc.
- This equates to approximate cost of \$63.00 USD per person per day
- If auxiliary generators are used, cost is \$14,000 USD per day. Aux power will only be used temporarily in the event shore power is unavailable or 30 days while we install shore power
- SOS partners will adhere to all Federal, State and local COVID-19 Protocols

SOS cost per person per day \$63
All additional services provided by approved wrap around service providers

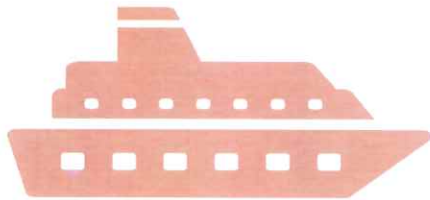
Cost per person requiring full medical and psychiatric care \$239.00 per day

Cost per person requiring full medical services \$143.00 per day

Cost per person requiring medical assistance \$93.00 per day

SOS cost per day \$63.00 Includes safe manning staff up to 60 persons required to maintain operations, kitchens, laundry and other facilities.

Environmental



Both vessels which are available now will meet CARB emission requirements. Vessels are AMP capable or may use an approved alternative emission control system



These are sustainable Vessels will not create stack emissions while being used as a housing/medical facility while in POLB and POLA



Perimeter lighting and any additional power requirements will be zero emission or gris neutral



Rules and Regulations Compliance

- SOS will ensure all visitors will comply with all federal, state, and local municipal rules and regulations
- SOS Partners will provide escort/transport services for all visitors wishing to disembark
- SOS partners will adhere to all maritime, environmental, and TSA transportation safety workers regulations
- Provide updated vaccinations for all staff and residents
- Safety and Security will be paramount for all persons visiting and living on site

Proven Concept Used Worldwide

EURACTIV

Another cruise ship for asylum seekers docks in Amsterdam

MIGRANT CRISIS | APR. 29, 2022

What Happens When You House More Than 1,000 Refugees on a Cruise Ship?

By [Katherine Chan](#)



Refugees in a cabin aboard the Holland America Line cruise ship docked in the Port of Rotterdam. Photo: Hollander Group/DutchNews.nl

Ukrainian refugees housed on a cruise ship in Rotterdam

Francesca Street, CNN • Published 7th April 2022

(CNN) — The travel industry has pitched in to help house some of the millions of people who have fled conflict in Ukraine over the past six weeks, with hotels and vacation home owners across Europe offering rooms to those in need.

Now a cruise liner has also opened its doors to the refugees. Holland America Line's Volendam, a 237-meter long, 10-deck cruise ship docked in the Dutch city of Rotterdam, has been recruited to provide temporary refuge for up to 1,500 Ukrainians.

"Our crew sees it as a true honor to make Volendam a comfortable and caring environment for families who have been through so much," the ship's captain, Ryan Whitaker, told [CNN Travel](#).

Goals

An unmatched, cost effective, and immediate housing solution

Provide urgent Medical services

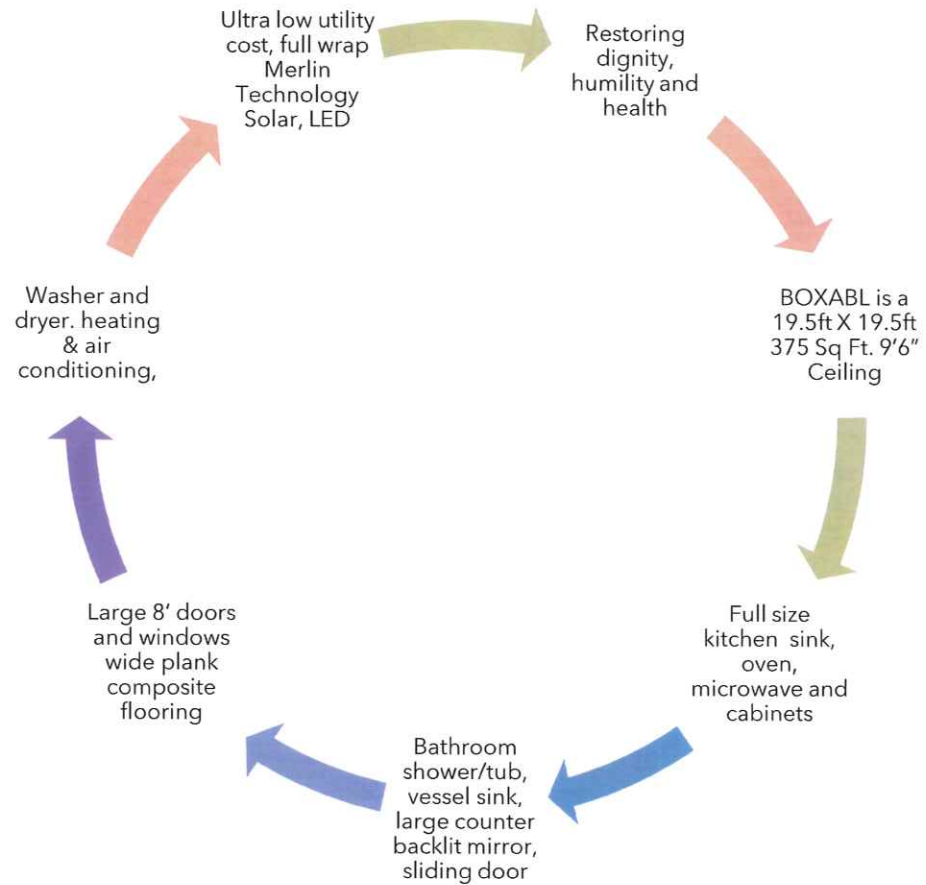
Improved Quality of life for the entire community

Safety: Safe shelter for program participants by establishing a crime free, drug free community on board

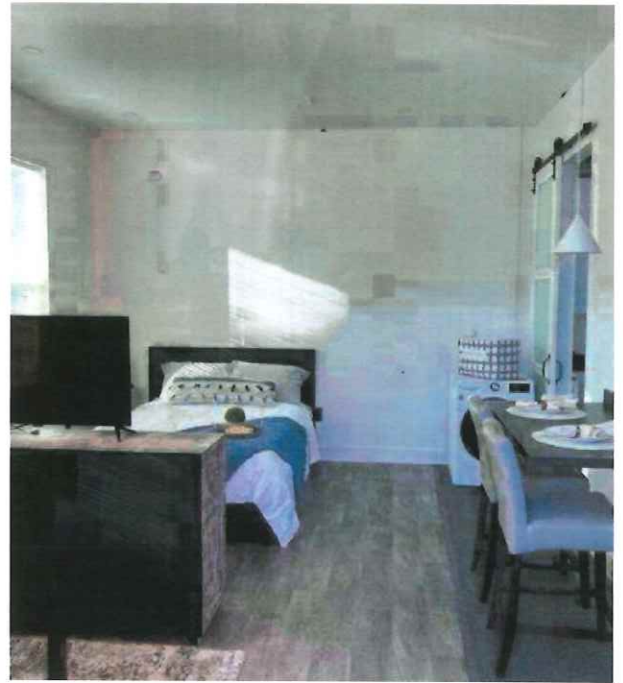
Provide health services typically not available for our most venerable community members

Re-entry programs that will increase successful overcomes

Phase II BOXABL ADU Sustainable Interim Housing



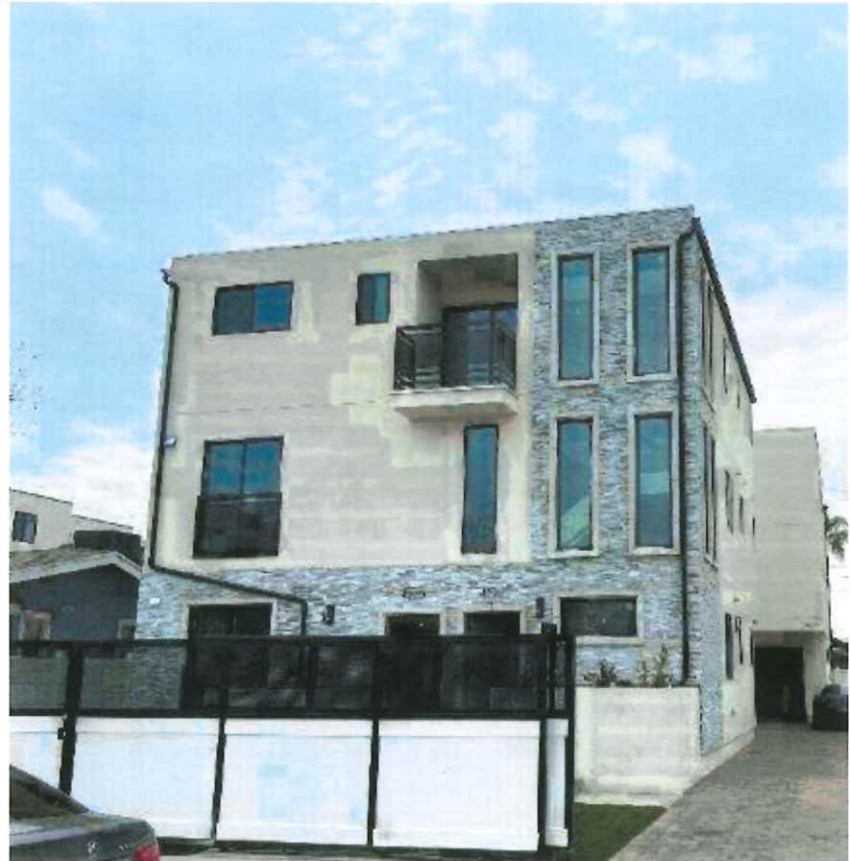
BOXABL




Confidential - Not for distribution

Phase III - Permanent Housing

- Permanent housing facilities
- Apartments
- Homes
- BOXABL, ADU's
- Assisted living facilities



Confidential - Not for distribution



For additional
information please
contact:

Joe R. Gatlin

NAACP

Juneteenth 400 501(c)(3)

310 766 5399 (mobile)

Joergatlin45k@gmail.com

Christine Valenzuela

GSE Gateway Science & Engineering

626 696 1600 (office)

626 255 0281 (mobile)

cvalenzuela@gateway-sci-eng.com



Joe Gatlin

NAACP

Joe Gatlin is a proud native of San Pedro and has been active in the community for over 60 years. He is an Army veteran serving for 11 years, including a stint with specialized Air Defense Unit as a commissioned officer. He later became area commander over the missile battalion located on the Palos Verdes Peninsula.

Joe has been very active in the community serving on the boards of Toberman House, Harbor College Foundation and Behavioral Health Services (BHS). Joe was also on the Board of Trustees for the Port of Los Angeles High School. He has also served on the Central San Pedro Neighborhood Council as Vice President and President; served for five (5) years on Chamber of Commerce Waterfront Planning Committee. Joe also found time to coach the San Pedro High School Girl's basketball team.

Being a true community leader he has supported Social Justice programs for the YMCA and YMCA; was instrumental in establishing the San Pedro section of the National Council of Negro Women and is the ~~Chairperson for the San Pedro Juneteenth committee~~. He also assisted in the emergency food programs of the LLWU Open Wide Program and the Toberman House Food Pantry which provides food for casual longshoreman and local harbor area residents.

Joe is a lifetime member of the NAACP and started the NAACP Branch of San Pedro/~~Wilmington~~ in 2015 currently serving as its Vice-President.

Joe's newest project is to bring annual programs and events to celebrate Juneteenth in the Harbor Area.

- 1.
- 2.
- 3.
- 4.
- 5.
- 6.