

## Airport Advisory Commission

**Wayne Chaney Sr.**  
Chair

**Jeffrey Anderson**  
Vice Chair

**Alvaro Castillo**

**Hal Gosling**

**Rita Nayak**

**Phil Ramsdale**

**Jeff Rowe**

**Roland B. Scott, Jr.**



**long beach**  
airport



## Airport Management

**Jess L. Romo, A.A.E.**  
Airport Director

**Juan López-Rios**  
Deputy Airport Director

**Ken Mason**  
Executive Assistant

**Claudia Lewis**  
Manager of Administration  
& Finance

**Fred Pena**  
Airport Operations Manager

**Ambi Thurai**  
Engineering Officer

**Dale Worsham**  
Administrative Officer

**Karl Zittel**  
Airsides Operations Officer

**Stephanie Montuya-Morisky**  
Public Affairs Officer

**Matthew Brookes**  
Airport Properties Officer

**Ron Reeves**  
Noise & Environmental Affairs  
Officer



# Long Beach Airport Monthly Noise Report February 2018

**COMMERCIAL AIRCRAFT LATE NIGHT ACTIVITY**  
**LGB Current Month & Calendar Year-To-Date Statistics (10 PM- 7AM)**  
**February 2018**

February				CY-T-D 2018		
10PM - 11PM Activity	2018	2017	Change	2018	2017	Change
<b>Air Carrier &amp; Commuter Operations</b>	<b>2,863</b>	<b>2,689</b>	<b>6.5%</b>	<b>5,991</b>	<b>5,615</b>	<b>6.7%</b>
American/Mesa/SkyWest Airlines	7	4	75.0%	8	5	60.0%
Delta/SkyWest Airlines	3	2	50.0%	5	8	-37.5%
FedEx	0	0		0	0	
JetBlue Airways	37	40	-7.5%	68	79	-13.9%
Southwest Airlines	0	5	-500.0%	1	7	-85.7%
UPS	0	0		0	0	
<b>Subtotal 10PM-11PM</b>	<b>47</b>	<b>51</b>	<b>-7.8%</b>	<b>82</b>	<b>99</b>	<b>-17.2%</b>
<b>11PM- 7AM Activity</b>	<b>2018</b>	<b>2017</b>	<b>Change</b>	<b>2018</b>	<b>2017</b>	<b>Change</b>
American/Mesa/SkyWest Airlines	0	1	-100.0%	1	3	-66.7%
Delta/SkyWest Airlines	1	0	100.0%	2	2	0.0%
FedEx	0	0		0	0	
JetBlue Airways	8	15	-46.7%	39	46	-15.2%
Southwest Airlines	0	1	-100.0%	0	5	-500.0%
UPS	0	0		0	0	
<b>Subtotal 11PM-7AM</b>	<b>9</b>	<b>17</b>	<b>-47.1%</b>	<b>42</b>	<b>56</b>	<b>-25.0%</b>
<b>TOTAL</b>	<b>56</b>	<b>68</b>	<b>-17.6%</b>	<b>124</b>	<b>155</b>	<b>-20.0%</b>

Notes:

2.0% (56 of 2,863) of total commercial operations occurred between 10pm - 7am.

2.0 flights - Nightly average for all late night (10:00 PM—7:00 AM) commercial flights, includes unanticipated delays.

0.3 flights - Nightly average for commercial flights after 11 PM.

Of the 56 Late-Night Operations, 23% were due to mechanical issues, 21% were due to poor weather conditions, 20% were due to unknown reasons, 11% were due to staffing-related issues, 7% occurred during the five-minute grace period, 5% were due to late-arriving equipment, 4% were due to ferry flights, 2% were due to air traffic control conditions, 2% were due to weight and balance issues, 2% were due to delayed airline dispatch release, 2% were due to customer-related issues and 2% were due to catering issues.

**AIRPORT NOISE VIOLATIONS**  
**LGB Current Month & Calendar Year-To-Date Statistics**  
**February 2018**

February				CY-T-D 2018		
<b>Air Carrier Noise Violations</b>	<b>2018</b>	<b>2017</b>	<b>Change</b>	<b>2018</b>	<b>2017</b>	<b>Change</b>
American/Mesa Airlines	2	0	200.0%	3	0	300.0%
Delta/SkyWest Airlines	1	0	100.0%	2	1	100.0%
FedEx	0	0		0	0	
JetBlue Airways	14	16	-12.5%	49	43	14.0%
Southwest Airlines	0	1	-100.0%	0	3	-300.0%
UPS	0	0		0	0	
<b>Subtotal</b>	<b>17</b>	<b>17</b>	<b>0.0%</b>	<b>54</b>	<b>47</b>	<b>14.9%</b>
<b>Commuter Noise Violations</b>	<b>2018</b>	<b>2017</b>	<b>Change</b>	<b>2018</b>	<b>2017</b>	<b>Change</b>
American/SkyWest Airlines	0	0		0	0	
Delta/SkyWest Airlines	0	0		0	0	
<b>Subtotal</b>	<b>0</b>	<b>0</b>		<b>0</b>	<b>0</b>	
<b>Non-Commercial Noise Violations</b>	<b>2018</b>	<b>2017</b>	<b>Change</b>	<b>2018</b>	<b>2017</b>	<b>Change</b>
All GA, Charter & Other	13	22	-40.9%	23	39	-41.0%
<b>TOTAL</b>	<b>30</b>	<b>39</b>	<b>-23.1%</b>	<b>77</b>	<b>86</b>	<b>-10.5%</b>
<b>Monetary Fines</b>	<b>2018</b>	<b>2017</b>		<b>2018</b>	<b>2017</b>	
Airport Surcharges	\$3,600	\$3,300		\$6,100	\$5,000	
Consent Decree	\$48,000	\$90,000		\$222,000	\$234,000	
<b>TOTAL</b>	<b>\$51,600</b>	<b>\$93,300</b>		<b>\$228,100</b>	<b>\$239,000</b>	

**AIRPORT OPERATIONS**  
**LGB Current Month & Calendar Year-To-Date Statistics**  
**February 2018**

February				CY-T-D 2018		
<b>Airport Operations (FAA)</b>	<b>2018</b>	<b>2017</b>	<b>Change</b>	<b>2018</b>	<b>2017</b>	<b>Change</b>
Air Carrier + Commuter Carriers	2,863	2,689	6.5%	5,991	5,615	6.7%
Air Taxi + General Aviation	19,210	17,865	7.5%	41,355	38,118	8.5%
Military Operations	94	125	-24.8%	226	211	7.1%
<b>Total Aircraft Operations</b>	<b>22,167</b>	<b>20,679</b>	<b>7.2%</b>	<b>47,572</b>	<b>43,944</b>	<b>8.3%</b>

Notes:

0.1% (30 of 22,167) of the Airport's total aircraft operations (Commercial & GA) resulted in an aircraft noise violation.  
0.6% (17 of 2,863) of the Airport's Commercial operations (Commercial & Commuter) resulted in an aircraft noise violation.

# AIRCRAFT NOISE VIOLATORS

## February 2018

OWNERNAME	DATE	TIME	A/D	RWY	FLIGHT #	A/C TYPE	ORIG/DEST	SEL	LIMIT	STATUS
JetBlue Airways	2/1/2018	0:08:01	A	25R	JBU405	A320	BOS	93.0	n/a	VIO + Alt Enf
American Airlines	2/1/2018	22:11:38	A	30	ASH5965	CRJ9	PHX	92.1	90.0	VIO
Private	2/3/2018	2:53:52	A	30		BE55		82.8	79.0	VIO
BT Aviation LLC	2/5/2018	23:23:44	D	30		PA32		82.9	79.0	VIO
Jet Story Sp. z.o.o.	2/7/2018	1:03:21	D	30		GLF6		93.5	79.0	VIO
Mile High Investments LLC	2/9/2018	0:30:11	A	30		C650		83.6	79.0	VIO
JetBlue Airways	2/9/2018	22:58:45	D	30	JBU504	A320	BOS	96.3	90.0	VIO
JetBlue Airways	2/9/2018	23:22:40	D	30	JBU14	A320	JFK	93.2	79.0	VIO + Alt Enf
CAE Oxford Aviation Academy Phoenix Inc	2/10/2018	23:30:11	D	30		PA44		87.1	79.0	VIO
Kaiser Air, Inc.	2/10/2018	23:45:18	A	30		B735		96.0	79.0	VIO
JetBlue Airways	2/13/2018	0:22:41	A	30	JBU405	A320	PHX	94.1	79.0	VIO + Alt Enf
American Airlines	2/15/2018	22:40:42	A	30	ASH5965	CRJ9	PHX	92.2	90.0	VIO
JetBlue Airways	2/15/2018	23:58:43	A	30	JBU405	A320	DFW	92.9	79.0	VIO + Alt Enf
Zephyr Services LLC	2/16/2018	0:54:19	A	12		B350		88.8	79.0	VIO
Mashair LLC	2/16/2018	5:37:18	A	30		C525		91.6	79.0	VIO
JetBlue Airways	2/16/2018	23:05:26	D	30	JBU944	A320	FLL	93.4	79.0	VIO + Alt Enf
JetBlue Airways	2/16/2018	23:32:38	A	30	JBU1013	A320	SLC	93.0	79.0	VIO + Alt Enf
JetBlue Airways	2/17/2018	0:31:04	D	30	JBU14	A320	JFK	91.8	79.0	VIO + Alt Enf
JetBlue Airways	2/18/2018	22:05:43	A	30	JBU943	A320	FLL	95.6	90.0	VIO
JetBlue Airways	2/18/2018	22:17:20	A	30	JBU365	A320	SMF	94.1	90.0	VIO
Paradigm Air Carriers Inc.	2/18/2018	22:27:13	D	30		B752		94.2	90.0	VIO
Group 206 LLC	2/19/2018	23:27:36	A	30		C680		86.6	79.0	VIO
Delta Air Lines / SkyWest Airlines	2/20/2018	0:33:17	A	30	SKW4645	CRJ9	SLC	91.3	79.0	VIO
Tiny Bubbles Aviation Inc.	2/20/2018	6:24:08	A	30		AS350		92.6	90.0	VIO
JetBlue Airways	2/24/2018	22:16:44	A	30	JBU531	A320	SLC	93.7	90.0	VIO
JetBlue Airways	2/24/2018	22:41:07	A	30	JBU943	A320	FLL	92.6	90.0	VIO
JetBlue Airways	2/25/2018	22:06:48	D	30	JBU504	A320	BOS	93.1	90.0	VIO
JetBlue Airways	2/25/2018	23:11:06	A	30	JBU405	A320	SLC	94.2	79.0	VIO + Alt Enf

# AIRCRAFT NOISE VIOLATORS

## February 2018

OWNERNAME	DATE	TIME	A/D	RWY	FLIGHT #	A/C TYPE	ORIG/DEST	SEL	LIMIT	STATUS
WWE Jet Services Inc.	2/26/2018	1:28:10	A	30		GL5T		87.6	79.0	VIO
Island Express Helicopters Inc.	2/27/2018	23:39:02	A	30		S-76		87.4	79.0	VIO

### DEFINITIONS:

**A/C Type** — Aircraft Type

**RWY** — Runway

**A/D/G** — Arrival / Departure / Ground Operation

**SEL** — SENEL — Single Event Noise Exposure Level (dBA)

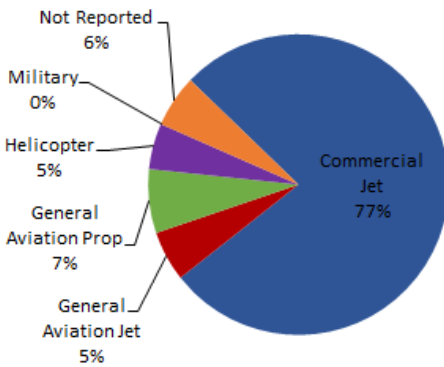
**ALT ENF** — Alternative Enforcement

**VIO** — Violation

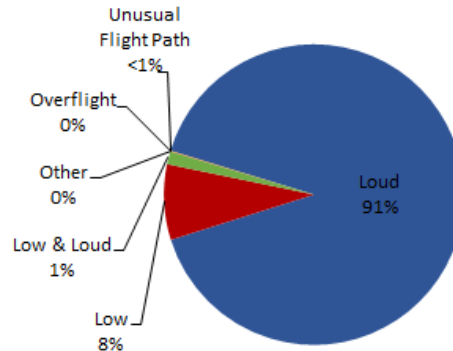
# LGB AIRCRAFT NOISE COMPLAINTS

## February 2018

### Complaints by Aircraft Types



### Complaints by Concern



### Complaints by Zip Code<sup>1</sup>

Zip Code	Complaints	Units
90501	1	1
90712	3	2
90713	9	1
90740	9	1
90803	1	1
90805	36	1
90807	30	8
90808	13	3
90815	4	3
92612	34	1
92620	1	1
92626	547	3
92647	24	3
92648	351	10
92649	376	6
92676	1	1
<b>Grand Total</b>	<b>1,440</b>	<b>46</b>

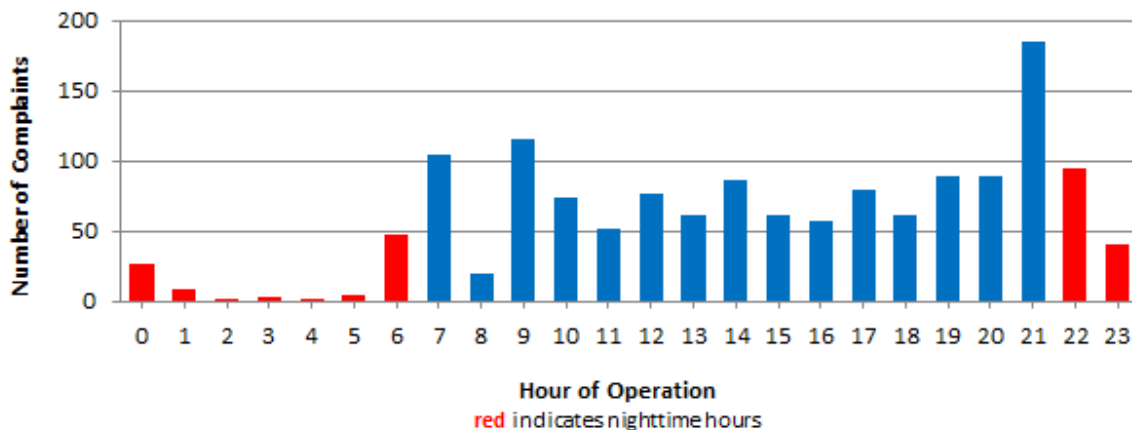
### Long Beach Residents' Helicopter Complaints Submitted to FAA<sup>2</sup>

Zip Code	Individual Complaints	Number of Individuals	Anonymous Complaints	Total Complaints
90802	6	2	17	23
90803	244	9	77	321
90804	1	1	0	1
90805	0	n/a	6	6
90808	1	1	1	2
90814	2	2	74	76
<b>Grand Total</b>	<b>254</b>	<b>15</b>	<b>175</b>	<b>429</b>

<sup>1</sup> These data include data submitted directly to Long Beach Airport and does not include data submitted to FAA.

<sup>2</sup> These data reflect helicopter noise complaints submitted directly to FAA.

### Complaints by Time of Operation



**[THIS PAGE INTENTIONALLY LEFT BLANK]**



# long beach airport



## Long Beach Airport

4100 E. Donald Douglas Drive, Long Beach, CA 90808

[www.lgb.org](http://www.lgb.org) • [lgbapt@longbeach.gov](mailto:lgbapt@longbeach.gov)

Administration • (562) 570-2619