



Pure Water Southern California

Long Beach City Council Meeting

September 19, 2023

PUREWATER
SOUTHERN CALIFORNIA



Working collaboratively with communities impacted by construction of the Pure Water program, respectfully seeking input, and building trust and positive relationships along the way



**LOS ANGELES COUNTY
SANITATION DISTRICTS**
Converting Waste Into Resources



Pure Water Southern California

How it works



①

Used water (wastewater) from homes, businesses, and industries in LA County



②

Cleaned at Sanitation Districts' Joint Water Pollution Control Plant



③

Purified at Metropolitan's advanced water purification facility



④

Conveyed through over 60 miles of pipeline to groundwater basins, industries, or Metropolitan's drinking water plants

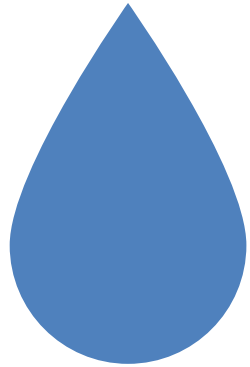


⑤

A new climate-resilient source of water for Southern California

Pure Water Southern California

In numbers



Up to 150 million
gallons per day or
155,000 acre-feet
per year




Enough water
for over
1.5 million
people



One of the
largest
programs of its
kind in world


Program Benefits

Water Supply Benefits

 Provides a Sustainable Supply of Water

 Increases Water Resiliency

 Replenishes Groundwater Basins

 Creates a Local Supply of Water

Environmental Benefits


 Enhances Water Quality

 Reuses the Largest Untapped Source of Wastewater in the Region

 Reduces Reliance on Imported Supplies

Economic Benefits

 Fuels Economic Growth

 Generates Jobs



THE METROPOLITAN WATER DISTRICT
OF SOUTHERN CALIFORNIA

Program Partners



LOS ANGELES COUNTY
SANITATION DISTRICTS
Converting Waste Into Resources

Metropolitan Member Agencies



Groundwater Basin Managers



Colorado River Partners

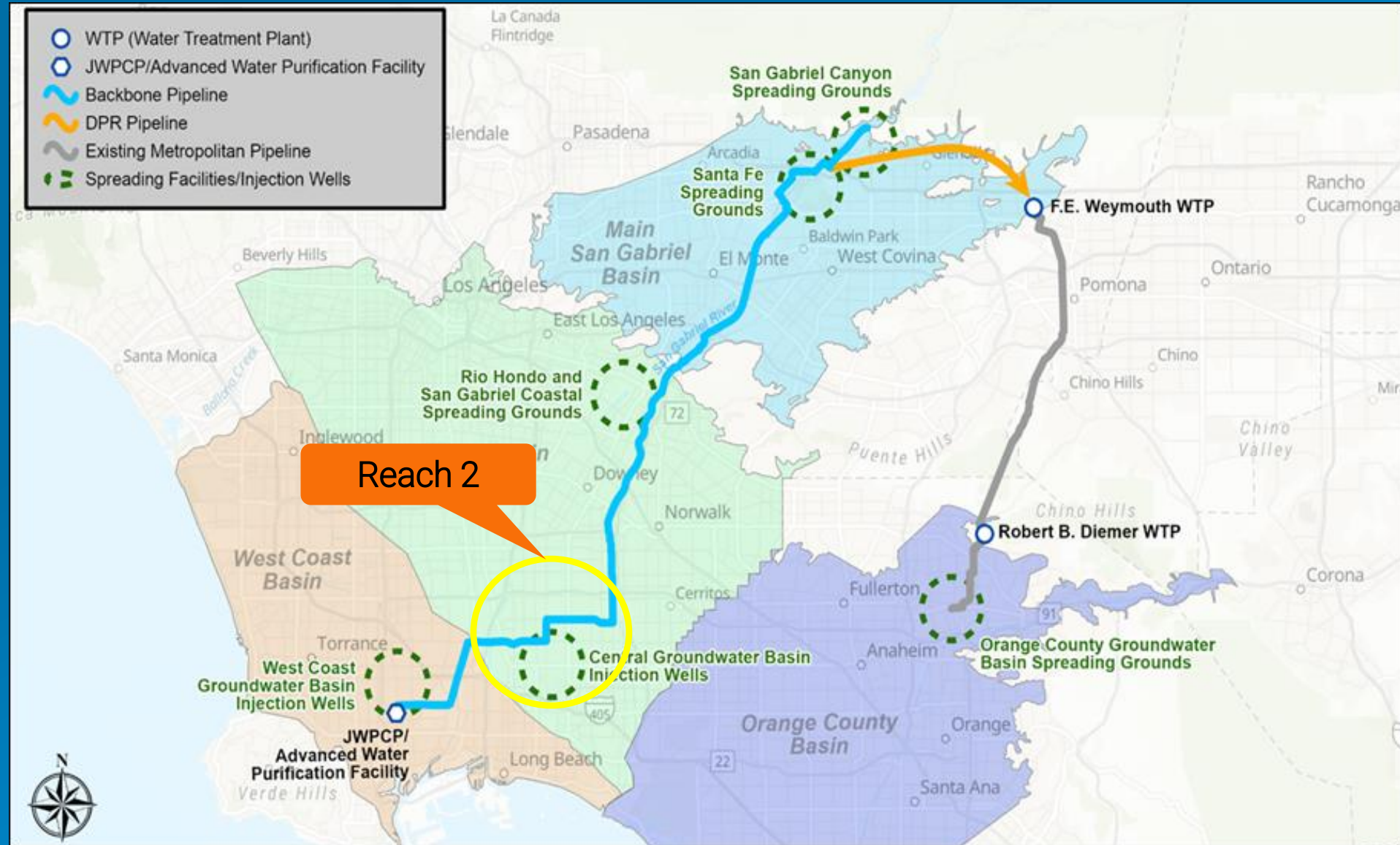


Other Key Partners



Program Overview

- Joint Water Pollution Control Plant
- Advanced Water Purification facility
- Conveyance pipelines
- Pump stations
- Spreading facilities
- Injection wells
- A regional water reuse system



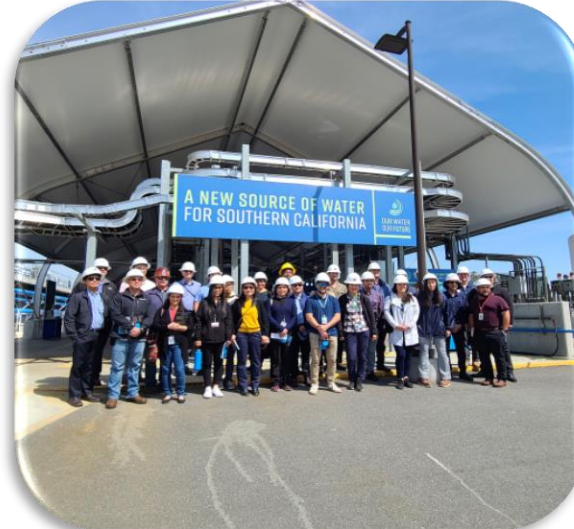
Program Schedule



Pure Water Southern California Core Outreach Activities



Media & Communications



Demonstration Facility Tours



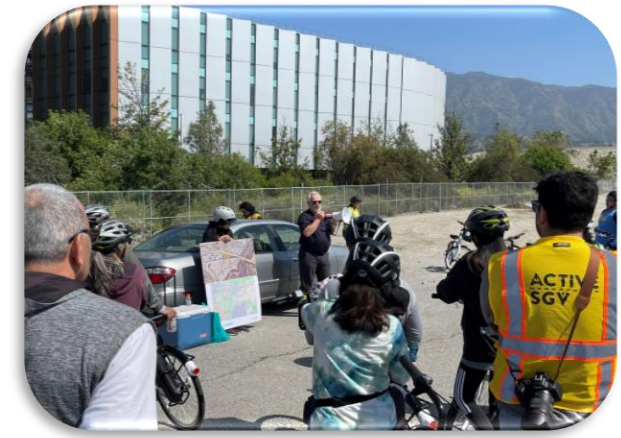
School Programs



Community Events



Stakeholder & Community Briefings



Partnership with Community Based Organizations

Water Supply Benefits to Long Beach

- Ongoing coordination with Long Beach utilities
- A replenishment source to sustain the City's groundwater resources
- Collaboration on pipeline crossings at the LA River & 710 freeway

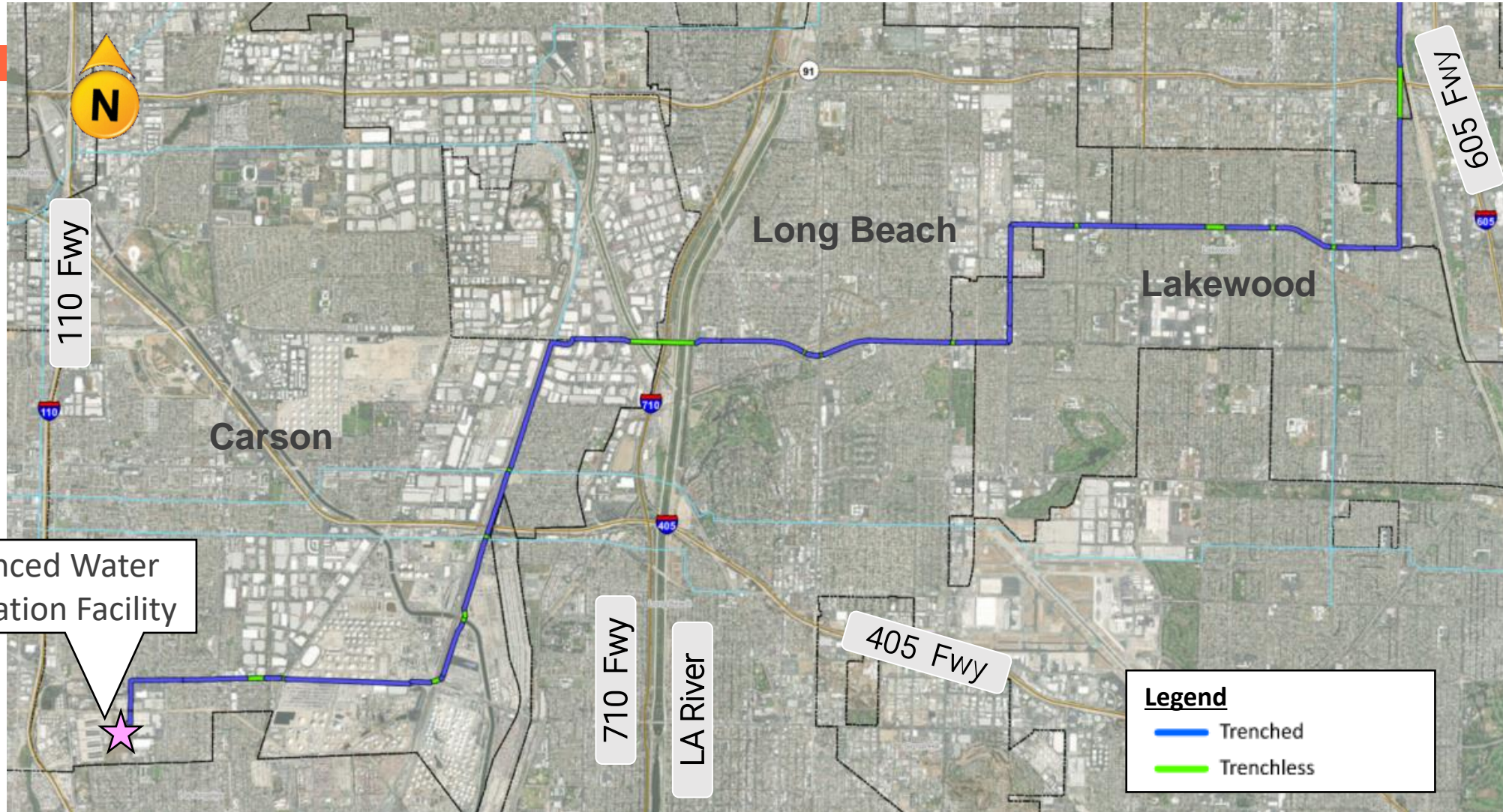


Working in Partnership with the City Of Long Beach

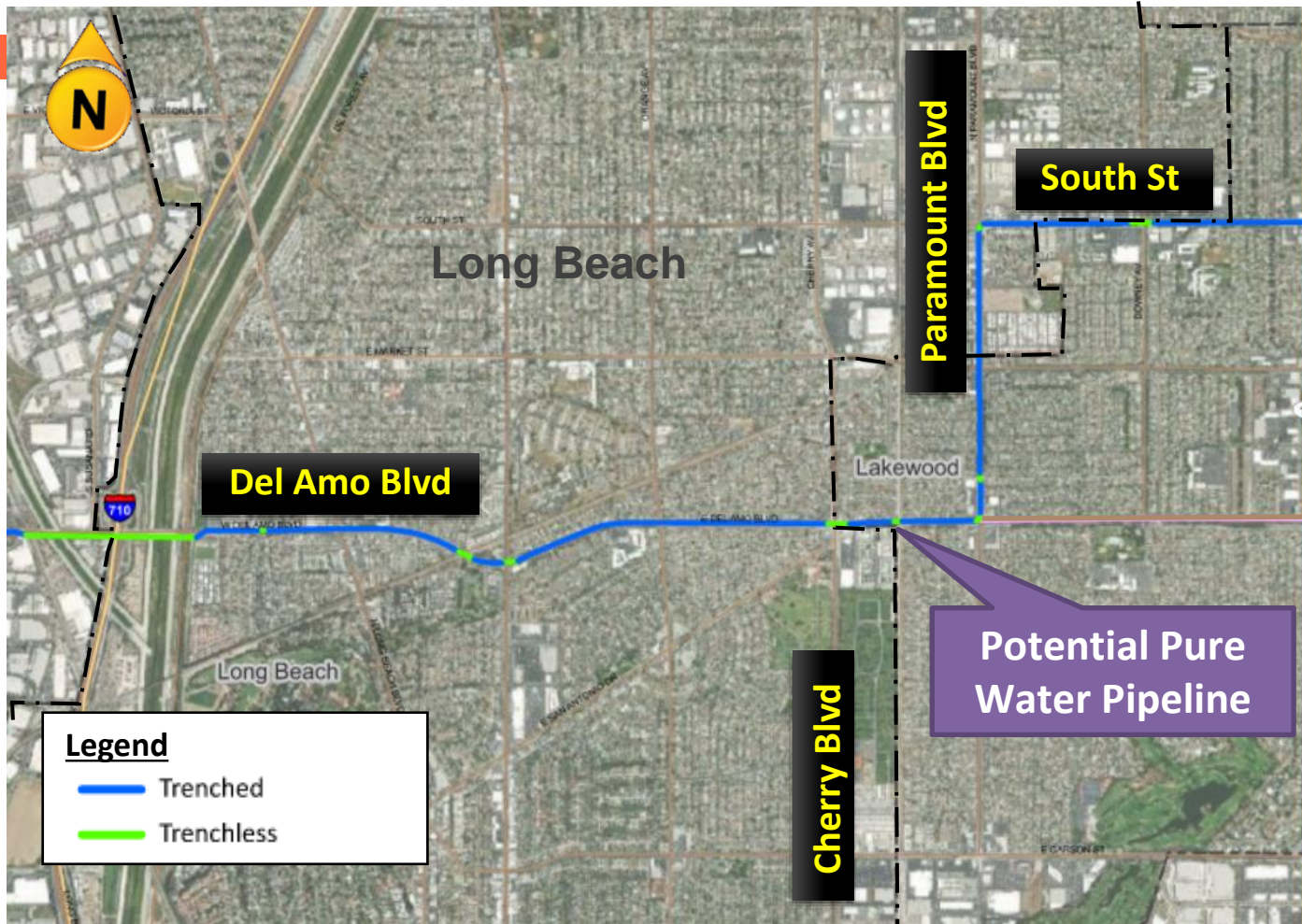


- Pipeline Alignment Considerations:
 - Traffic impacts
 - Business access & continuity
 - Residential impacts
 - Proximity to schools
 - Construction duration
 - Utility congestion
 - Proximity to fault zones & oil well fields
 - Previous City comments
 - Coordination with other City projects/goals

Conveyance Alignment



Alignment through Long Beach



3.8 miles in Long Beach

Tunneling at major crossings

1-2 years to construct
between 2026 & 2030

Shortest construction duration of
alternatives considered

Minimizes interference with
underground utilities & traffic

Minimizes impacts to schools,
residences & businesses

Example of Open Cut Construction



Typical Open Cut Construction Work Area
Photos courtesy of Black & Veatch, 66" steel water pipe

Example of Tunnel Access Pit



Second Lower Feeder Access Site
Photo courtesy of Black & Veatch, 78" steel water pipe

Estimated Construction Duration within City of Long Beach

Segment	Potential Impacts			Pipeline Length	Construction Method	Construction Duration
	Residential	Commercial	Other			
Crossing 710 Freeway & LA River	~57 units	Low	3 schools, 1 police station, 2 churches	0.5 mile	Tunnel	8-11 months
Del Amo Blvd				2.2 miles	Tunnel & Open Cut	9-14 months
Paramount Blvd & South St				1.1 miles	Tunnel & Open Cut	5-7 months
Total				3.8 miles		1-2 years

Next Steps

- Obtain City Council approval of alignment through Long Beach
 - Metropolitan to work with City to optimize construction plans
 - Metropolitan commits to minimize potential construction impacts
- Initiate preliminary design
 - Conduct utility/field investigations
 - Coordinate with Long Beach at LA River crossing
 - Establish service connection requirements
- Continue coordination with City
 - Potential for jobs development & training
 - Address potential community impacts
 - Outreach efforts throughout life of the project



PUREWATER
SOUTHERN CALIFORNIA