



DDR PIKE LAND SWAP

June 21, 2011

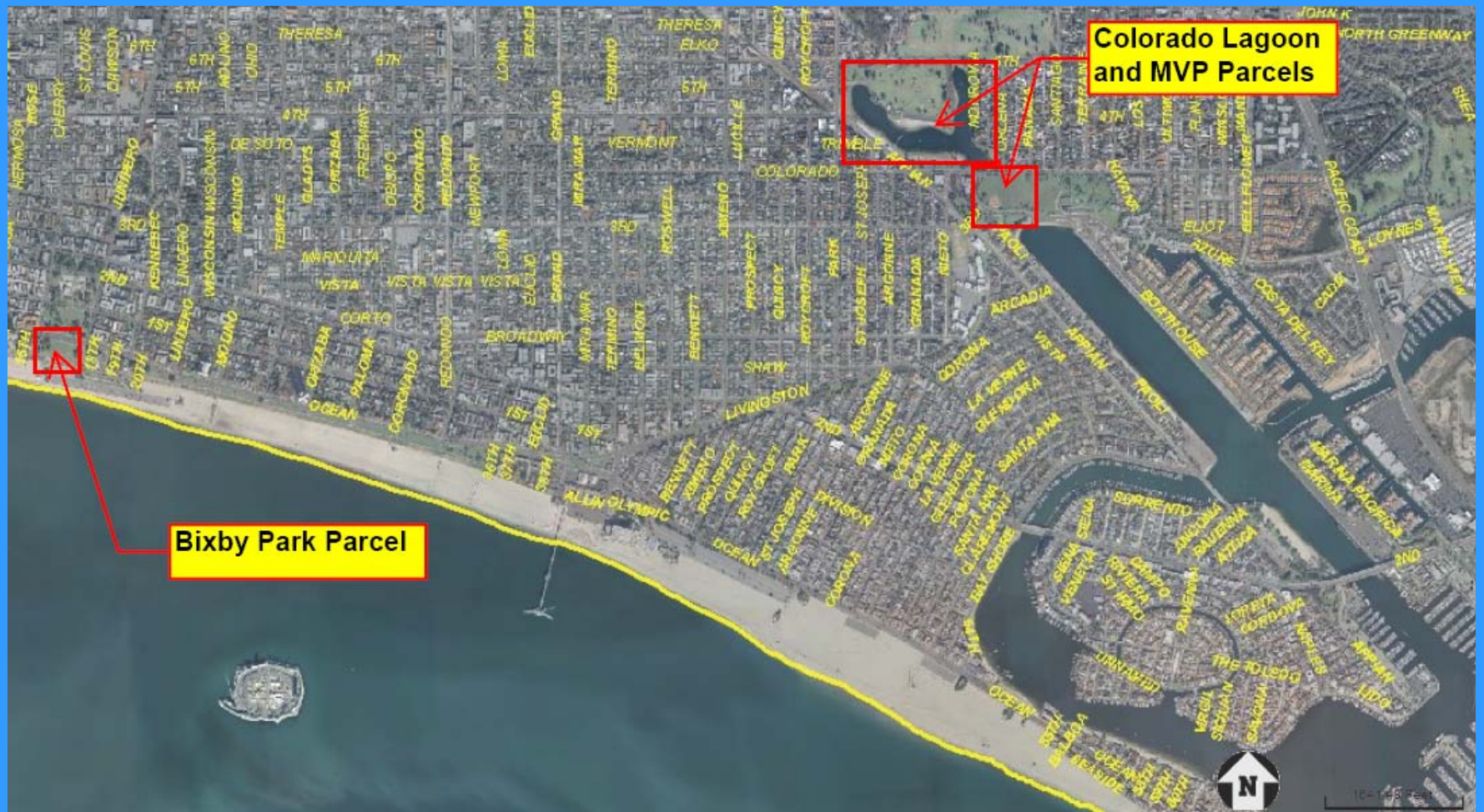


Pike Parcel - 10.24 Acres

- 0 = 7278-010-920
- 1 = 7278-010-921
- 2 = 7278-010-922
- 3 = 7278-010-923
- 4 = 7278-010-924
- 5 = 7278-010-925
- * = 7278-007-925



Proposed Land Swap Parcels





Bixby Parcel – 3.04 Acres





Colorado Lagoon – 29.27 Acres



7246-011-900
 7246-011-901
 7246-011-902
 7250-021-900 (Portion)



Open Channel Alternative 4a

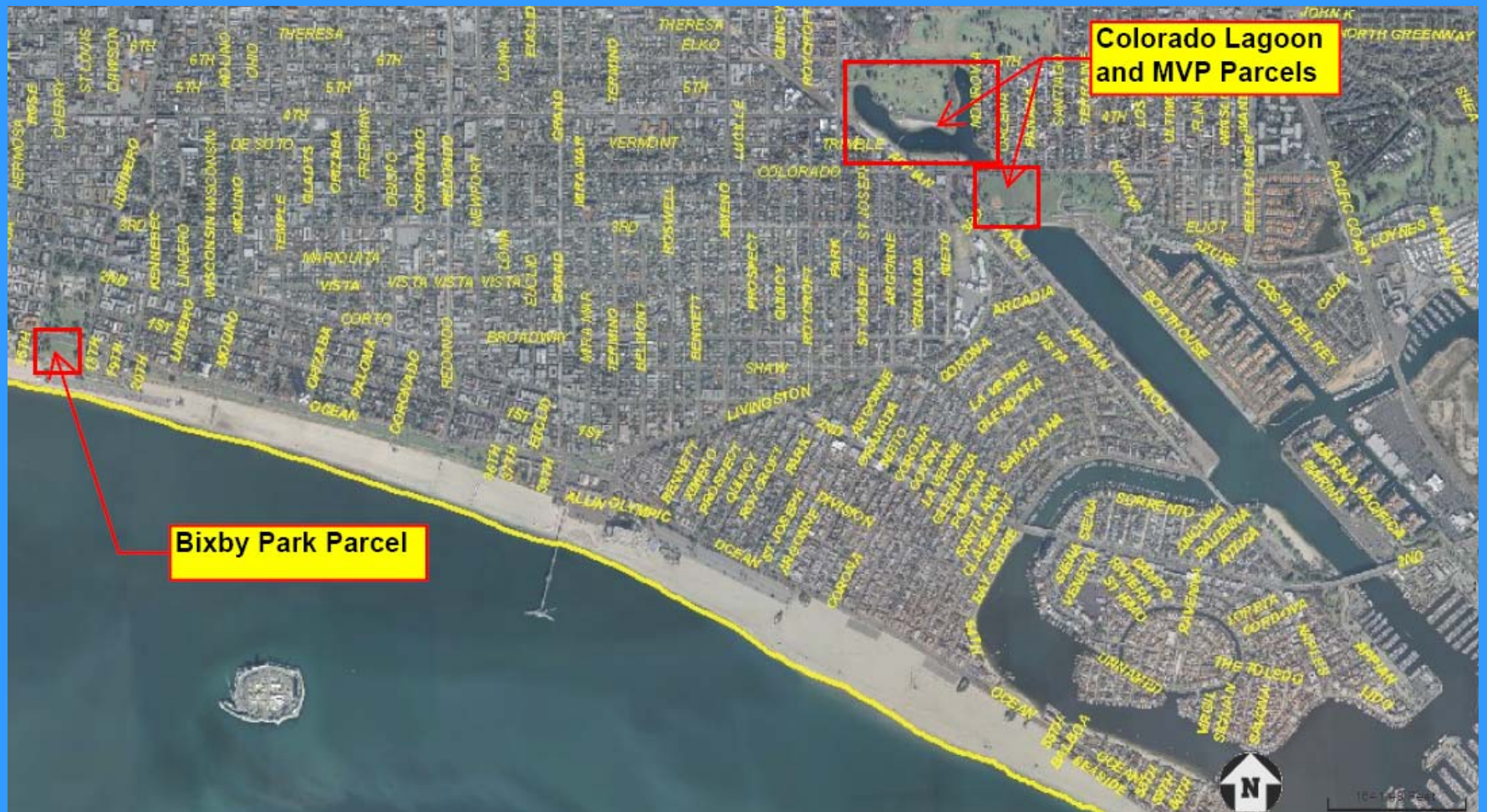




Pike Land Swap Valuations

	Pike Land Area	Appraised Value	City Land Area	Appraised Value
The Pike	10.24 Acres	\$ 49,100,000		
Bixby Park			3.045 Acres	\$ 26,400,000
Colorado Lagoon			29.27 Acres	\$ 18,600,000
Marine Stadium Channel			5.872 Acres	\$ 4,100,000
TOTAL	10.24 Acres	\$ 49,100,000	38.18 Acres	\$ 49,100,000

Proposed Land Swap Parcels





DDR PIKE LAND SWAP

June 21, 2011