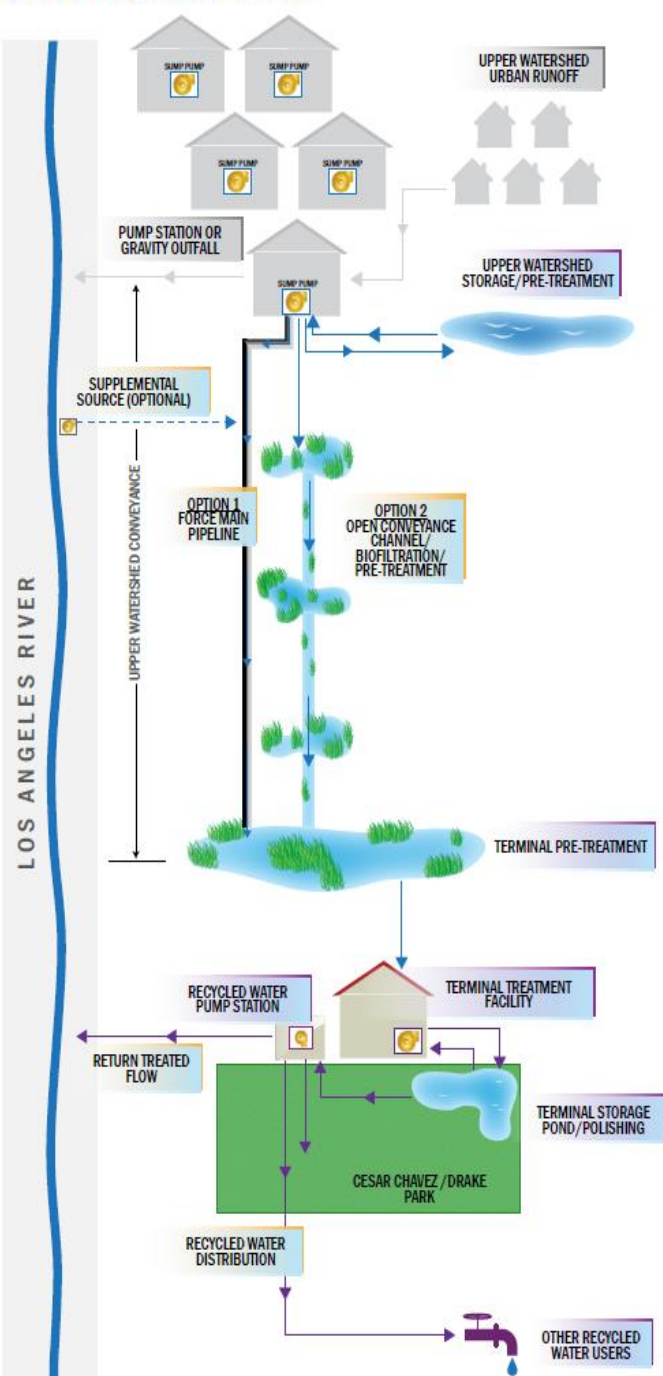




# Long Beach Municipal Urban Stormwater Treatment (LB-MUST) Facility Phase II Project

City Council Meeting - July 6, 2021



# Program Concept

## LB-MUST is a Stormwater Treatment Program within the Lower Los Angeles River watershed

- **Three main components**
  - Intercept/Convey stormwater from existing Pump Stations
  - Stormwater Treatment at the LB-MUST Facility
  - Water Re-use
- **Water Treatment Goals**
  - Improve quality of stormwater discharged into LA River
  - Sustain wetlands habitat
  - Future opportunities for a recycled water source



# Constructed Wetlands

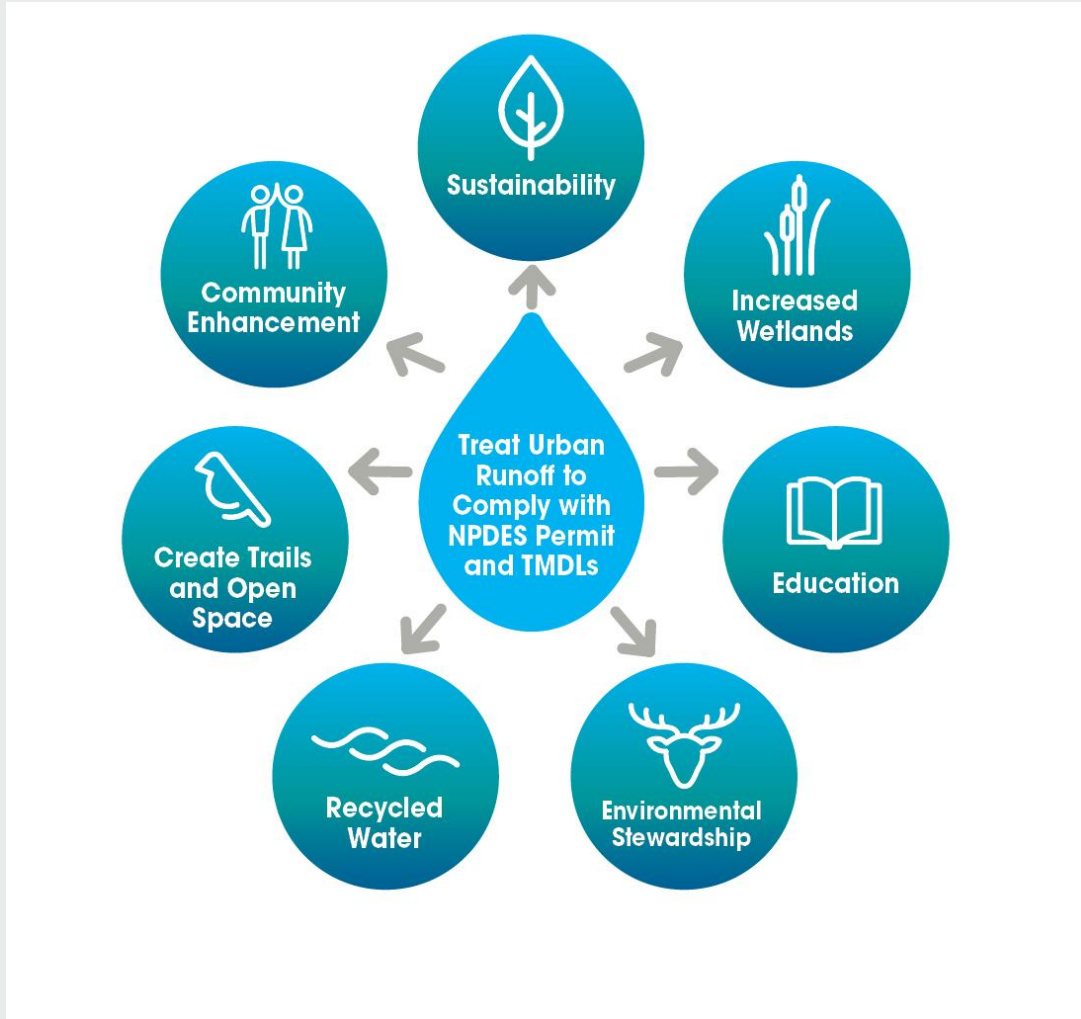
- 1 acre of brackish water wetlands
- Wetland design collaboration with Aquarium of the Pacific and Rivers and Mountains Conservancy
- Native compatible and drought tolerant planting
- Pedestrian path, greenspace and connectivity
- Pilot area for alternative irrigation water source

# West Long Beach Integration Plan

## LB-MUST Shoemaker Bridge Replacement - Cesar Chavez Park - Drake Park - I-710 Corridor



# Project Goals









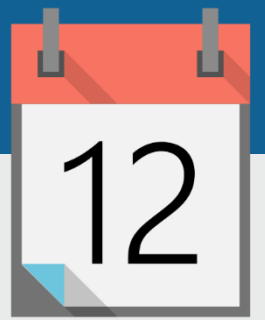












## Phase 1 Budget = \$44 million

- \$28 million Caltrans
- \$10.8 million Measure W SCW
- \$2 million Prop 1 – RMC Round 1
- \$1 million Port of Long Beach
- \$1 million Measure A
- \$500,000 CA Coastal Conservancy
- \$428,000 City of Long Beach

## Future Phases = \$150-\$200 million

## Budgeted Activities

- **2020**
  - Street improvements, underground utilities, ground improvements, and equipment delivery
- **2021-2022**
  - Treatment facility construction, industrial building demolition, wetland construction, and initial conveyance
- **2022-2023**
  - Equipment installation, commissioning, startup, and acceptance
  - Wetland plant establishment
  - Construction completion

- **December 2020**
  - Completed: Street improvements, underground utilities, ground improvements, and equipment delivery
- **January 2021 – April 2021**
  - Final Design: Treatment Facility, Wetlands
  - Advertise: Treatment Facility
- **May 2021 – Planned**
  - Award: Facility – Construct in Summer 2021
  - Advertise: Wetlands – Construct Fall 2021



Questions?