



CITY OF LONG BEACH

DEPARTMENT OF PUBLIC WORKS

C-13

333 WEST OCEAN BOULEVARD • LONG BEACH, CA 90802 • (562) 570-6383 • FAX (562) 570-6012

February 13, 2018

HONORABLE MAYOR AND CITY COUNCIL
City of Long Beach
California

RECOMMENDATION:

Authorize the City Manager, or designee, to grant an easement deed to Southern California Edison at 4951 Oregon Avenue, for the installation of electrical equipment. (District 8)

DISCUSSION

Integral Communities is developing 131 detached single-family dwellings on the site of the former Will J. Reid Boy Scout Camp at 4951 Oregon Avenue, as well as Molina Park as a condition of approval. To accommodate the new use, it is necessary that an easement be granted to Southern California Edison (SCE) to allow for the installation of electrical equipment (Exhibit A). This new equipment will allow SCE to increase capacity to deliver electrical services to the new single-family residential community, Molina Park, and traffic signals that are under construction. Expanded electrical services are part of the construction plans for the new housing development.

City staff conducted a review of affected City departments and there were no objections to the proposed easement. In conformance with the California Environmental Quality Act (CEQA), Environmental Impact Report SCH #2014091011 was accepted by the City Council on May 9, 2017, for the report.

This matter was reviewed by Deputy City Attorney Linda T. Vu on January 17, 2018 and by Budget Analysis Officer Julissa José-Murray on January 25, 2018.

TIMING CONSIDERATIONS

City Council action on this matter is not time critical.

FISCAL IMPACT

A grant of easement processing fee in the amount of \$2,108 was deposited in the General Fund (GF) in the Public Works Department (PW). Approval of this matter will provide continued support to the local economy.

HONORABLE MAYOR AND CITY COUNCIL
February 13, 2018
Page 2

SUGGESTED ACTION:

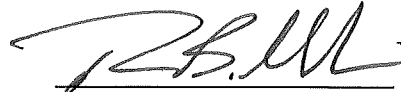
Approve recommendation.

Respectfully submitted,



CRAIG A. BECK,
DIRECTOR OF PUBLIC WORKS

APPROVED:

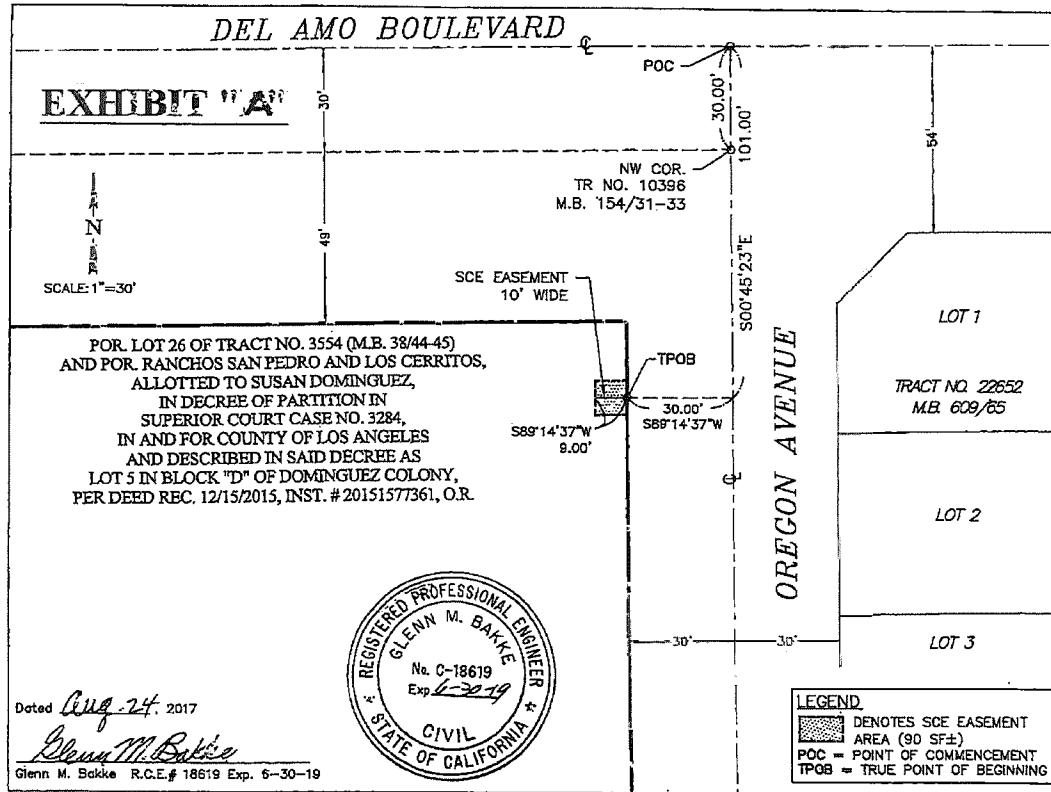


PATRICK H. WEST
CITY MANAGER

CB:SC:EL:JH:BP:sdj

ATTACHMENT: EXHIBIT A – UTILITY EASEMENT

SKETCH NO. 205EG
SKETCH SHOWING A PORTION OF LOT 26,
TRACT NO 3554 EASEMENT TO BE
GRANTED BY THE CITY OF LONG BEACH
TO SOUTHERN CALIFORNIA EDISON



DEPARTMENT OF PUBLIC WORKS
ENGINEERING BUREAU
CITY OF LONG BEACH, CALIFORNIA
EXHIBIT A