



City Council

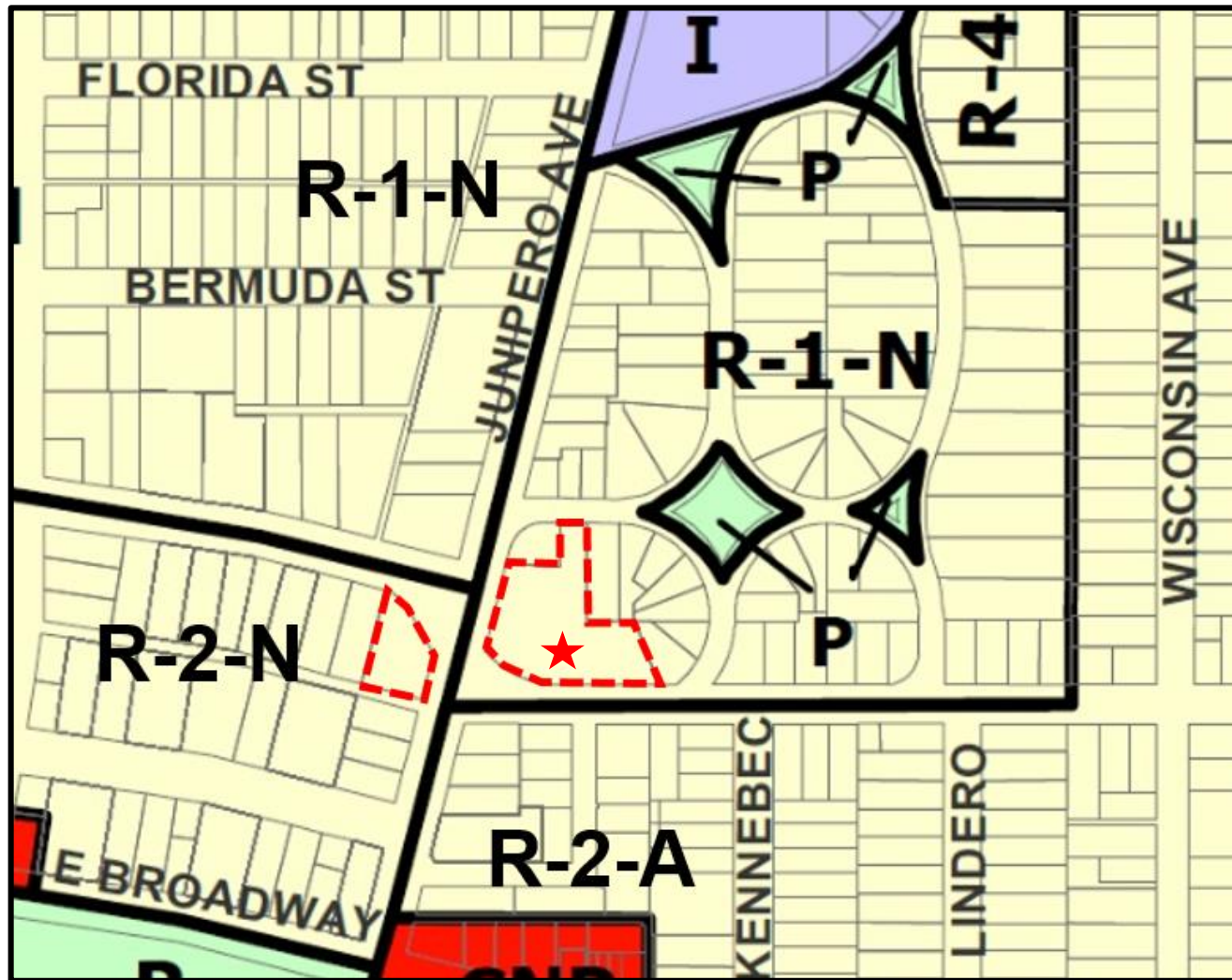
August 7, 2018

Appeal Public Hearing (APL18-002)

Conditional Use Permit (18-006) for YMCA childcare services and health and wellness programming

Grace Methodist Church – 2325 E. 3rd Street (District 2)

VICINITY MAP



- Single-Family Residential District (R-1-N) and Two-Family Residential (R-2-N) District
- Parking Impacted Area
- Carroll Park Historic District

PROJECT SITE

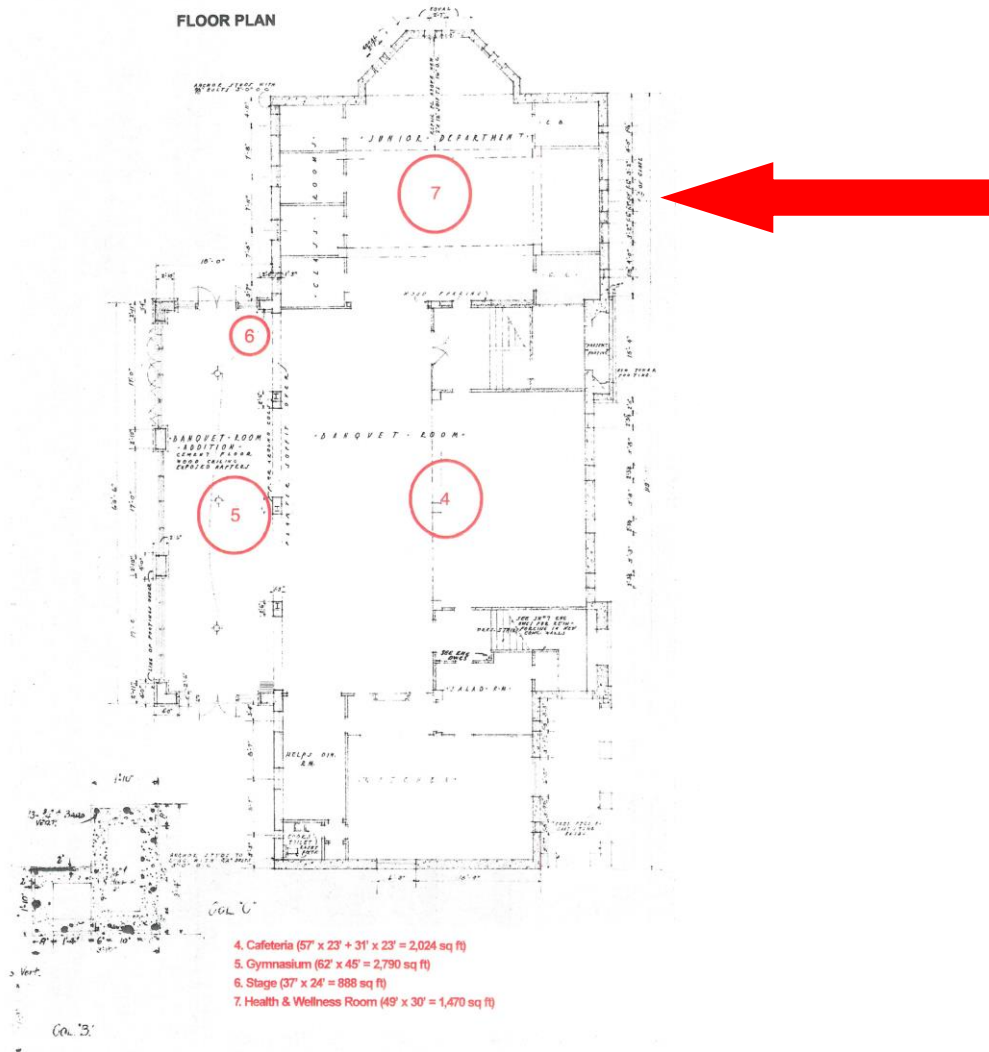


VICINITY MAP



- June 21, 2018 the Planning Commission approved a CUP for childcare services and community health and wellness programming at the Grace United Methodist Church.
- Appellant has appealed the health and wellness programming portion of the approval.

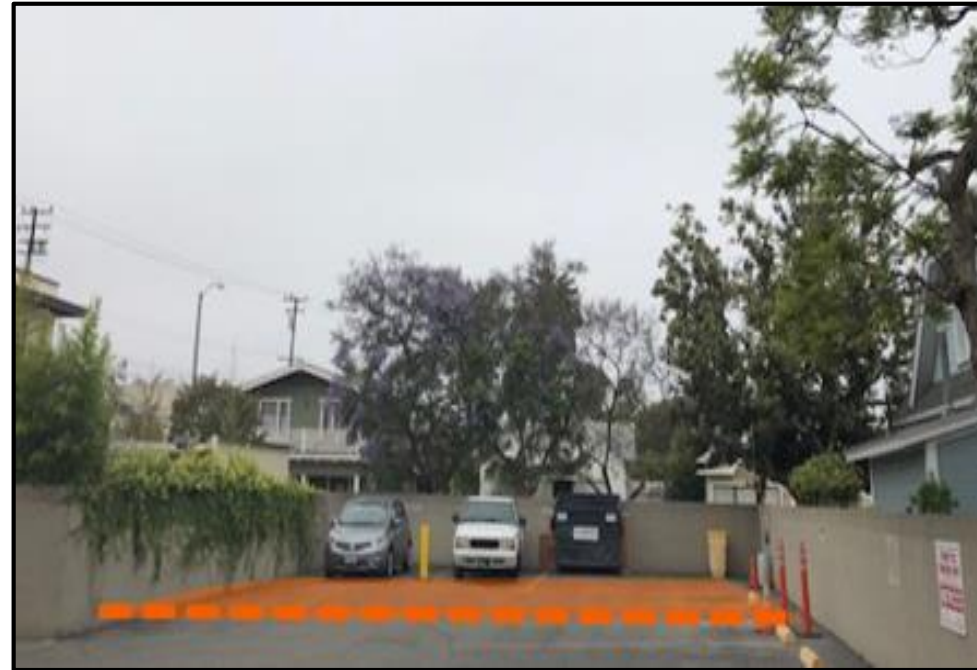
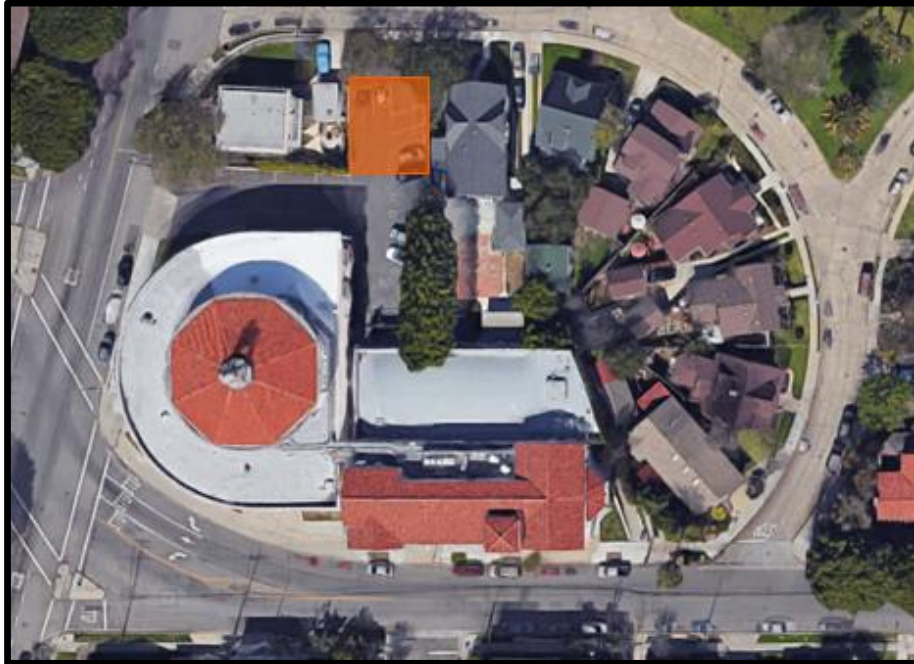
HEALTH AND WELLNESS PROGRAMMING



- Occurs in a 1,470 square-foot room within the lower level of the church
- Fitness equipment
- Sports Clinics
- Group classes
- Would stagger hours with the church assembly use

PLAY AREA REQUIREMENT

75 sq.ft. of outdoor play area per child is required (LBMC Chp. 21.52).



PARKING AND LOADING

58 parking stalls between the on-suit and off-site parking lots.

Church owns both parking lots.

Childcare and wellness programming requires 22 spaces.



RECOMMENDATION

Uphold the Planning Commission decision approving Conditional Use Permit (CUP18-006) based on the findings and subject to the Conditions of Approval.