



CITY OF LONG BEACH

C-19

DEPARTMENT OF PUBLIC WORKS

333 WEST OCEAN BOULEVARD • LONG BEACH, CA 90802 • (562) 570-6383 • FAX (562) 570-6012

March 13, 2018

HONORABLE MAYOR AND CITY COUNCIL
City of Long Beach
California

RECOMMENDATION:

Increase appropriations in the Capital Projects Fund (CP) in the Public Works Department (PW) by \$100,000 for the design of a soundwall on northbound Interstate 605 near Spring Street, offset by Measure R Highway Sub-Regional Program grant funds. (District 5)

DISCUSSION

The Northbound Interstate 605 near Spring Street (Project) is a recommended Interstate 605 (I-605) Early Action project to construct approximately 800 lineal feet of soundwall between the Coyote Creek Channel and East Spring Street (Exhibit A). The purpose of the Project is to preserve and enhance the health and quality of life in the corridor and to remedy a problem at that location where Caltrans removed trees that previously served as a noise barrier for the El Dorado Lakes condominium development.

The initial \$250,000 in Measure R Early Action funds for environmental and design work for the Project was approved by the Gateway Cities Council of Governments (GCCOG) on August 25, 2015, and approved by Los Angeles County Metropolitan Transportation Authority (Metro) Board of Directors on December 4, 2015. However, additional funds are needed for Caltrans permit inspection fees, to complete the design work, and to cover other costs not previously anticipated. On August 22, 2017, an additional \$100,000 in Measure R Early Action was approved by the GCCOG, and by Metro on October 26, 2017, for a total of \$350,000.

On November 7, 2016, the City Manager's office executed the original Funding Agreement with Metro under the authority of Resolution No. RES-16-0099, formalizing the terms and conditions for use of Project Measure R funds. On February 21, 2017, the City Council approved an appropriation increase of \$250,000 for design.

This matter was reviewed by Deputy City Attorney Linda T. Vu on February 15, 2018 and by Budget Analysis Officer Julissa Jose-Murray on February 26, 2018.

TIMING CONSIDERATIONS

City Council action on this matter is requested on March 13, 2018, to allow the City to continue progress on the design phase of the Project, which is anticipated to be complete by early 2019.

HONORABLE MAYOR AND CITY COUNCIL

March 13, 2018

Page 2

FISCAL IMPACT

The design of the soundwall on northbound I-605 near Spring Street will cost approximately \$350,000, and is fully funded by Measure R grant funds made available under MRHSP. All eligible expenses will be fully offset by grant reimbursement revenue and no matching funds are required. Grant funding in the amount of \$250,000 is currently appropriated and an appropriation increase of \$100,000 is requested in the Capital Projects Fund (CP) in the Public Works Department (PW) to bring the budget to a total of \$350,000.

Total project construction costs will be determined further into the design phase. City staff will request additional Metro Measure R funding for construction after the design plans have been completed and return to the City Council to request an appropriation increase for construction costs when funding has been secured. There is no local job impact associated with this recommendation.

SUGGESTED ACTION:

Approve recommendation.

Respectfully submitted,



CRAIG A. BECK
DIRECTOR OF PUBLIC WORKS

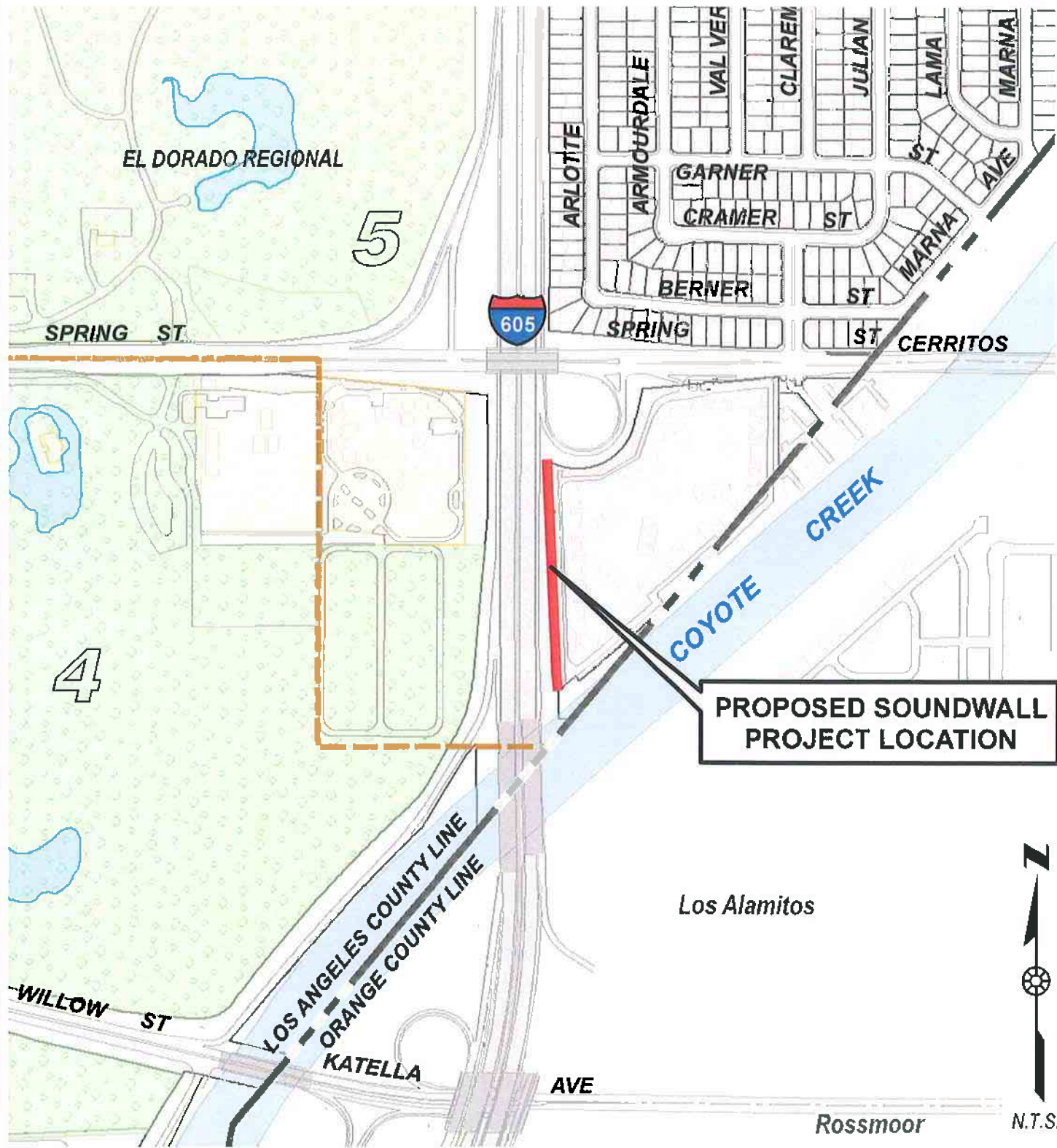
APPROVED:


PATRICK H. WEST
CITY MANAGER

KH:
PICLI-605 SOUNDWALL DESIGN CL.DOCX

ATTACHMENT: – EXHIBIT A - VICINITY MAP

Document Path: P:\Drafting\GIS - Drafting Maps (ArchMap)\GIS City Council\1r VicinityMap-2016-I-605 Soundwall.mxd



PROPOSED SOUNDWALL PROJECT LOCATION



N.T.S.

**CITY OF LONG BEACH - CALIFORNIA
DEPARTMENT OF PUBLIC WORKS, ENGINEERING BUREAU**

**VICINITY MAP FOR THE
NORTHBOUND I-605 AT SPRING STREET
SOUNDWALL CONSTRUCTION**

Exhibit A