

Striving Towards a Healthy, Thriving Long Beach

Setting the stage for action

*Economic Development Commission
January 28, 2020*



Back to the Source: The Blueprint

Quality of Life Focus Area:

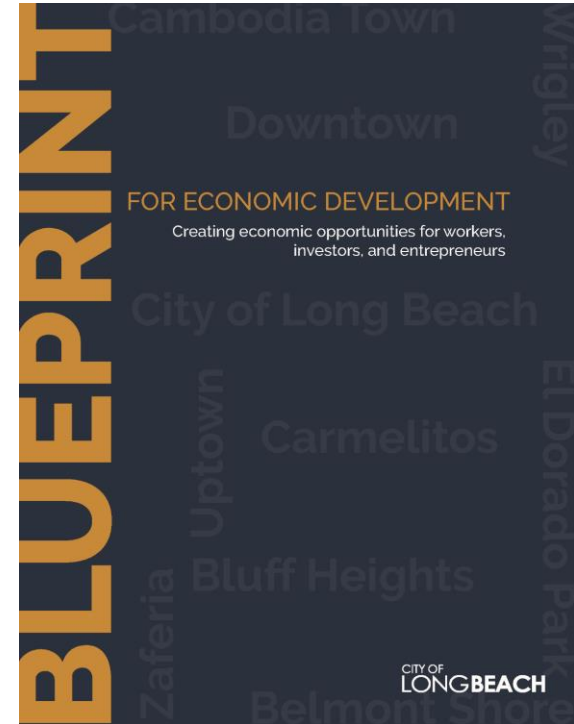
Enhance the City's quality of life while growing businesses, jobs, and investment that support a thriving local economy.

Objective:

Increase the percentage of children and adults with health insurance.

Recommendation:

Engage the health care and public health sectors in strategies to connect all residents in Long Beach to physical and mental health services.

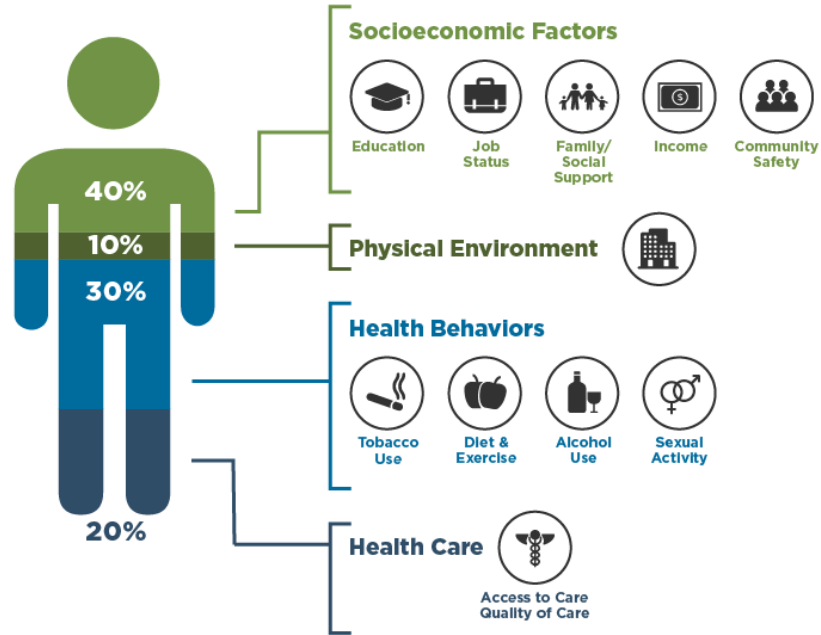


Health & Economic Growth

- Healthy people are more productive
- Better able to contribute to their family & community
- Healthy children learn more because they're absent less
- More career options, financial success & potential
- Significant burden of mental health conditions and substance abuse on employees, employers, family life & potential
- Intergenerational wealth accumulation



What Goes Into Your Health?



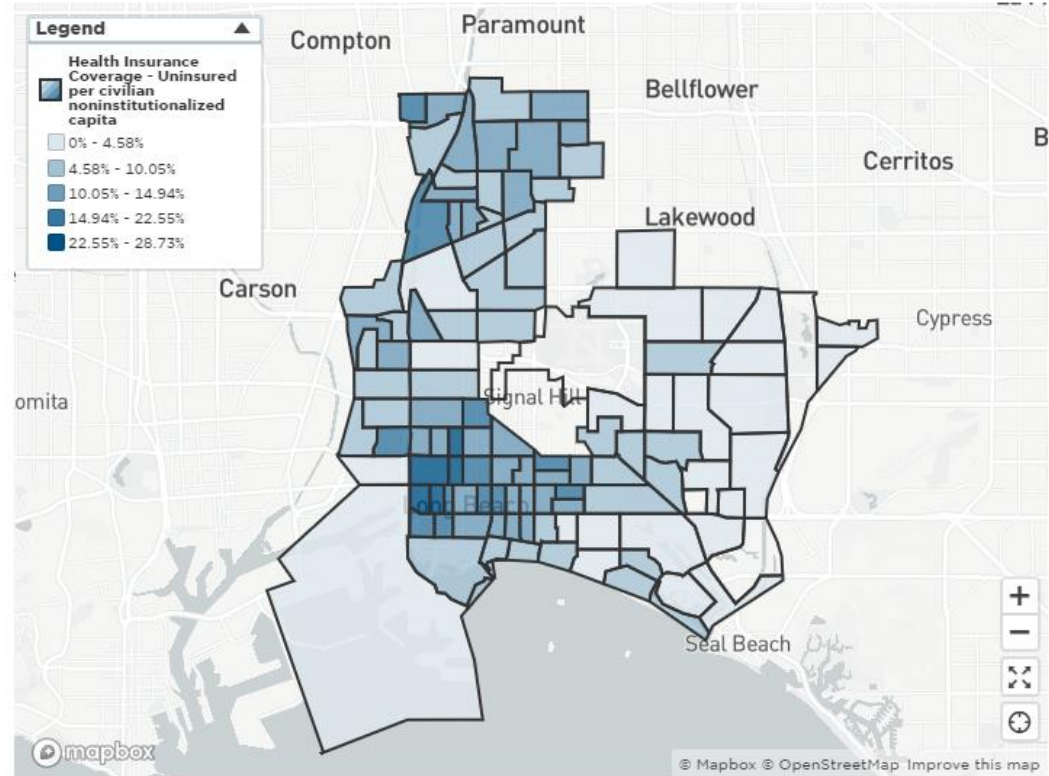
Source: Institute for Clinical Systems Improvement, Going Beyond Clinical Walls: Solving Complex Problems (October 2014)

Adapted from The Bridgespan Group

Where are we now?

Health Insurance Coverage

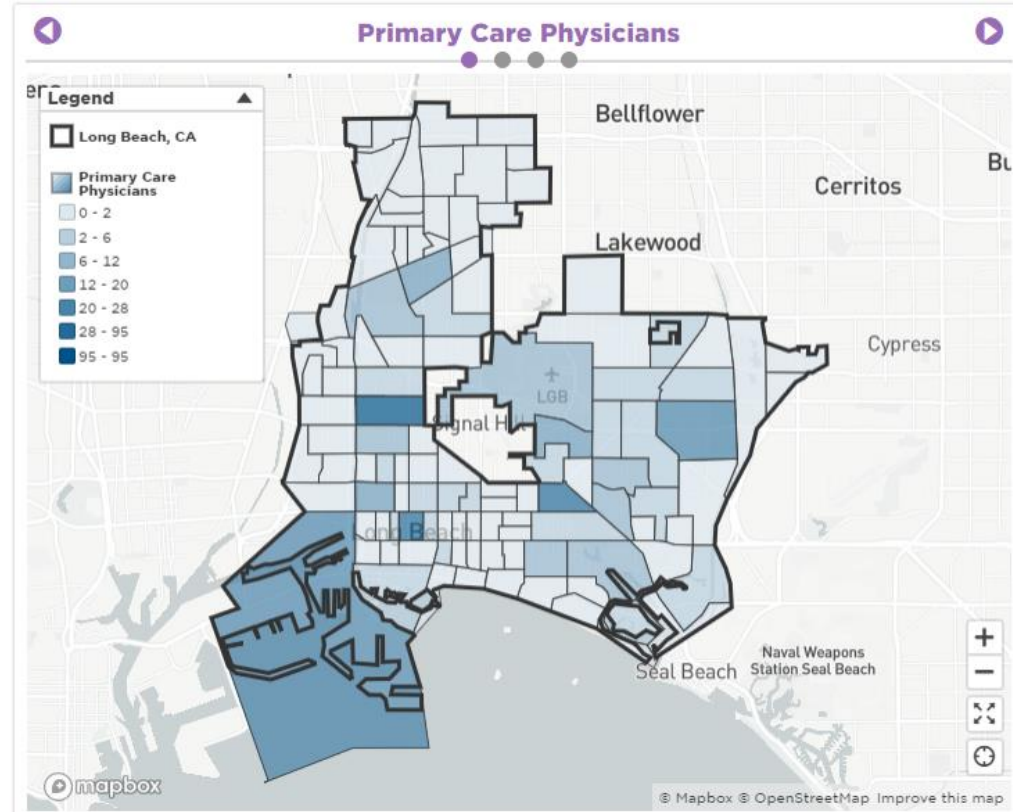
- 90.4% overall in Long Beach
- Map shows uninsured per civilian noninstitutionalized capita



Where are we now?

Local Health Care Providers

Primary Care Physicians	346.59
Specialist Physicians	612.81
Number of Dentists	232.87
OB-GYNs	63.25
Total Population - 2010	462,065





Today's Panel

Tiffany Cantrell-Warren, MBA, Bureau Manager, Community Health, Long Beach
Department of Health and Human Services

Patricia Costales, LCSW, Chief Executive Officer, The Guidance Center

Jack Tsai, MD, Associate Medical Director of Homeless Services, TCC Family Health

Ali Zandi, PysD, MA, Director of Behavioral Health, TCC Family Health



Group Discussion

- What information do we need to improve?
- What's next?
- What can we do as a Commission?



What info do we need to improve?

- Local & state data
 - Continue tracking data
 - Analyze impacts and trends
- Projections for the future of the industry
- Understanding of health policy at the state & federal level



What's next?

- Map assets, understand gaps
 - Who else is talking about this?
 - Office of Equity, Health and Human Services Department
 - Parks, Recreation and Marine Department
 - Development Services Department
 - Climate Action and Adaptation Plan
- A series of conversations with local providers across the spectrum of care
 - Primary care, specialists, hospitals, post-hospitalization acute care
 - Posing the question: How can we do better?
- Health policy folks (at the state & county level)
 - Senator Lena Gonzalez, Senate District 33
 - Sharing their idea for what's ahead



What can we do as a Commission?

- Have health care questions posed across convenings (entrepreneurship events, BID events, large employer events, union events)
 - What are employee concerns?
 - What are employer concerns?
 - What are the assets and concerns of members of the health care industry?
- Raise awareness across our areas of impact and interest
- Bring together various stakeholders to keep this as a top priority
 - Mayor, City Council, Various Industries (the port, hospitals, etc.)
- Engage work of Community Development Corporation and Development Services



Reactions, Thoughts, Questions?

Let's keep the conversation going!