



CITY OF
LONGBEACH

Communications Updates

August 29, 2019



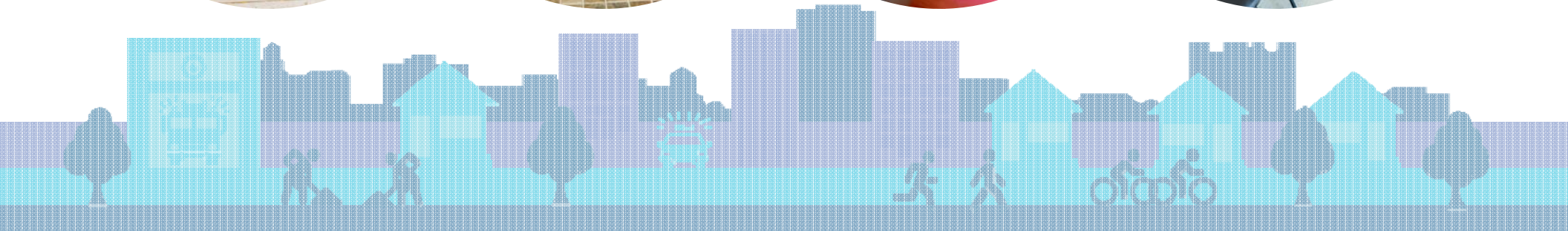
Measure A Bikes





Grand Re-Opening Stearns Park Community Center

CITY OF
LONG BEACH





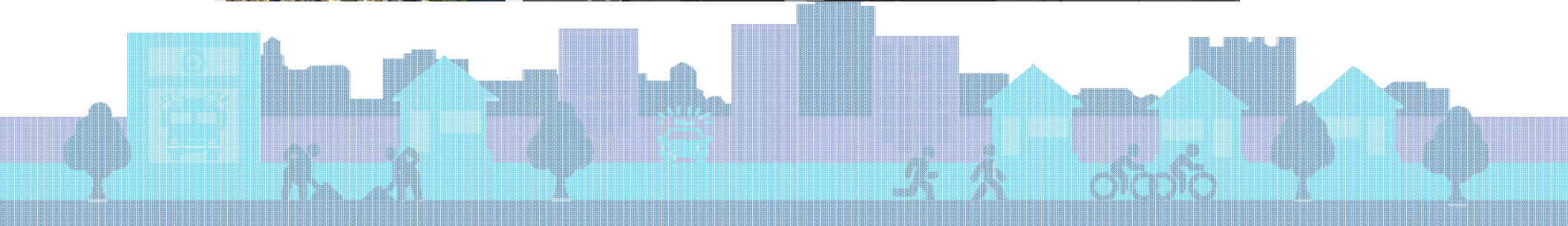


Mapping Website - Before



Measure A Capital Improvement Projects in Fiscal Year 2017

Overview Streets Community Public Safety To Learn More...

The life blood of any city is its infrastructure: streets and sidewalks, parks and community centers, and libraries and public safety facilities. Great cities have great infrastructure that they invest in through maintenance and upkeep. Conversely, deferring investment can quickly add up and make repairs that much more expensive. For example a roof that isn't fixed can quickly result in the failure of an entire building. With the passage of measure A, the city is committed to implementing its '\$150 Million Plan' over a period of roughly three years. Click through the tabs to learn more about the street, community, and public safety projects kicking off the first year of this plan in the City of Long Beach.





New – LongBeach.gov/MeasureA

CITY OF
LONG BEACH



Parks & Recreation



Public Safety Facilities



Community Facilities



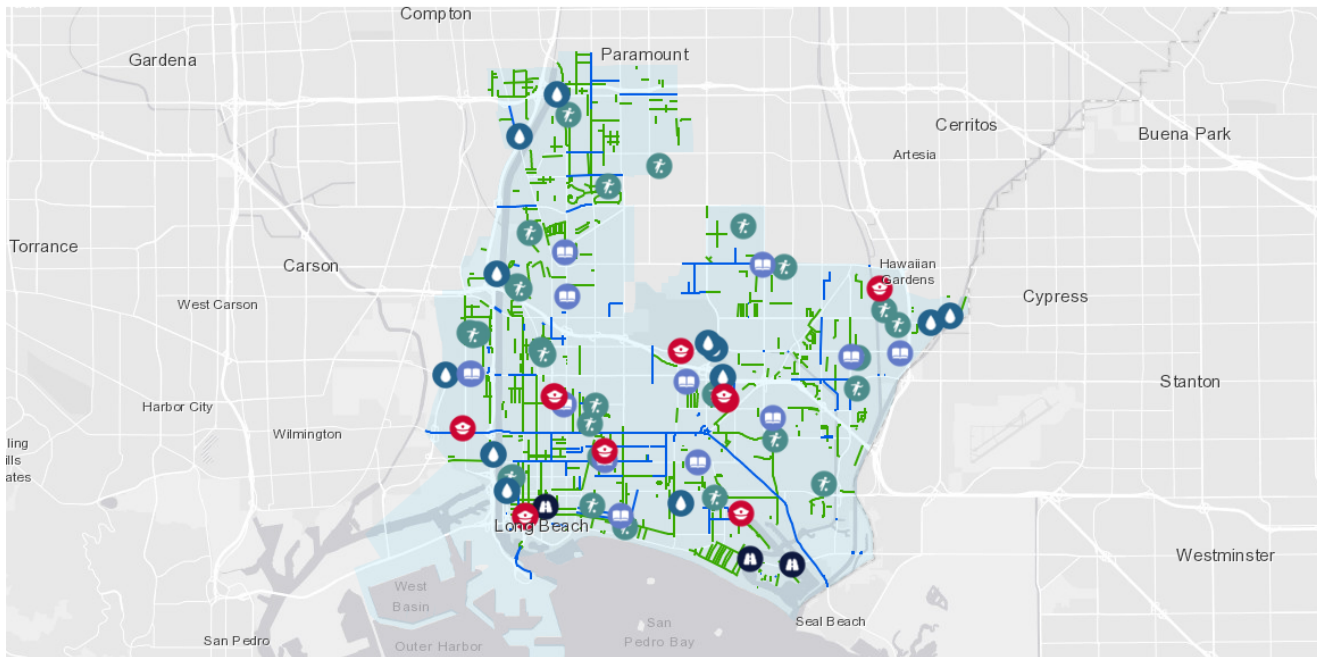
Mobility



Clean Water

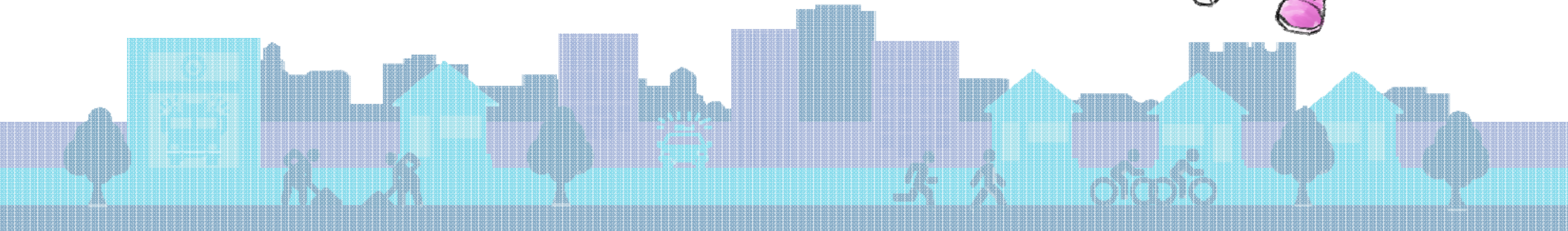
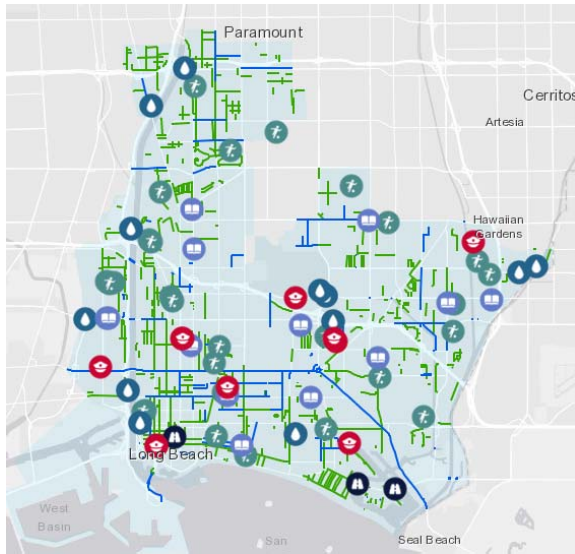


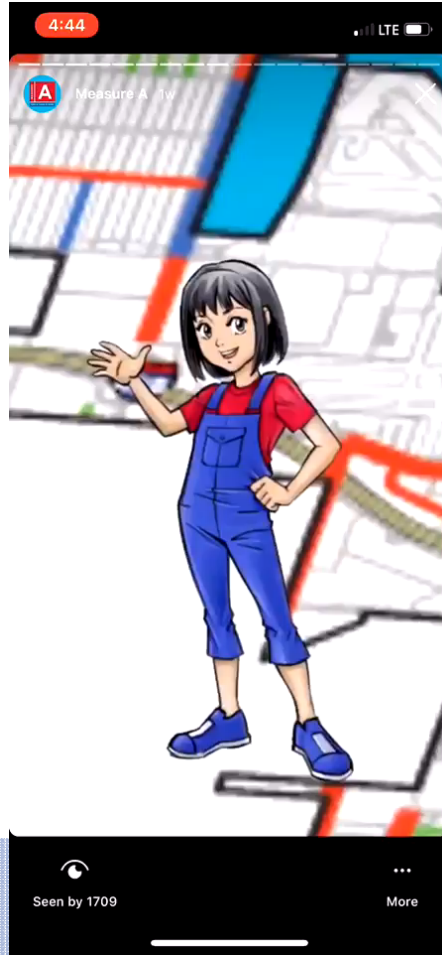
Citywide Efforts



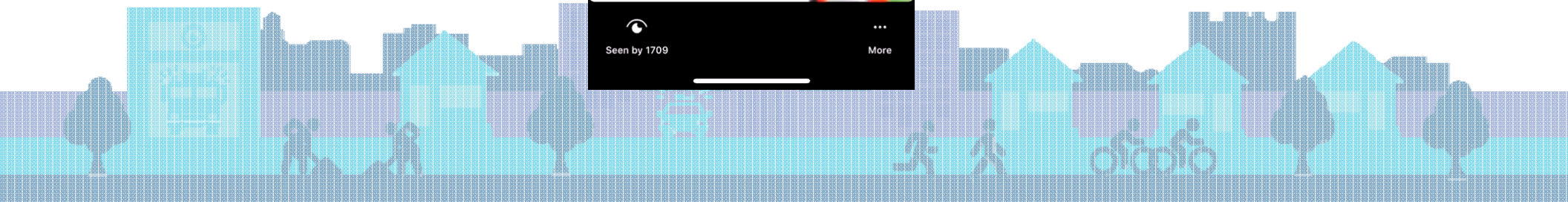


CITY OF
LONG BEACH



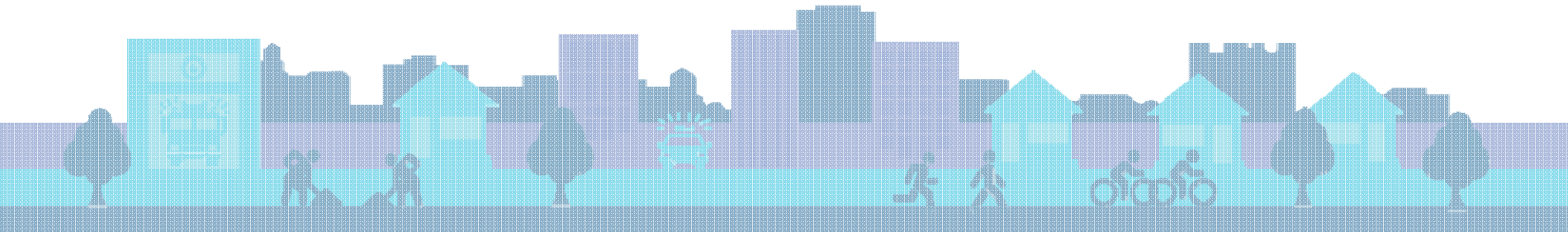


CITY OF
LONG BEACH





	Reach	Replies	Swipe Up	Exit
Goal	1000	500	10% increase over the previous "story"	Less than ½ of Reach (i.e. <500)
Average (over 3 posts)	1186	172	- 39.5%	57





*Where is #MeasureA
Desirae today?*

CITY OF
LONG BEACH

