



# Emergency Proclamation to Address Homelessness

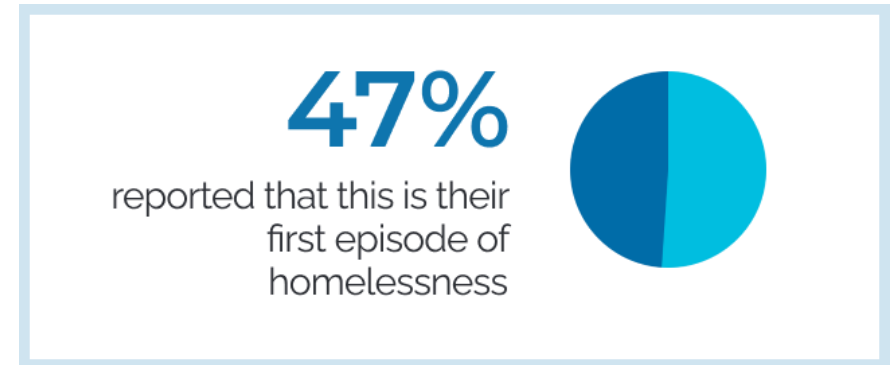
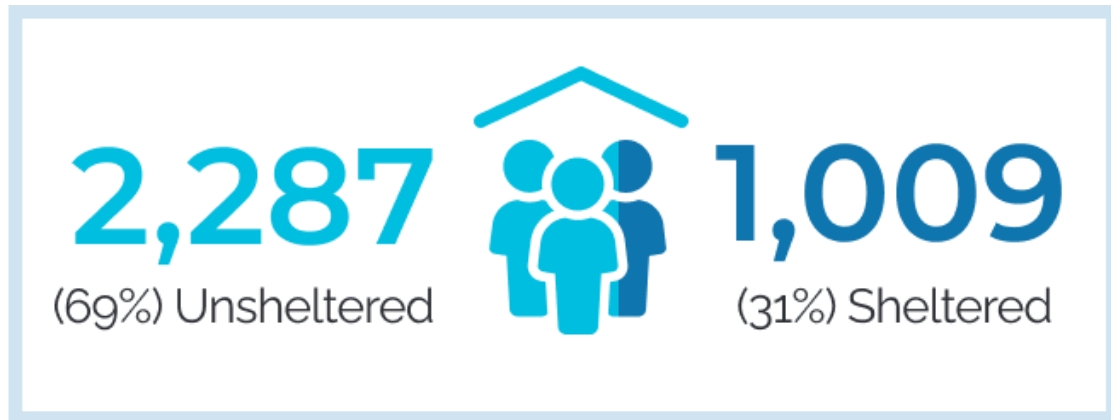
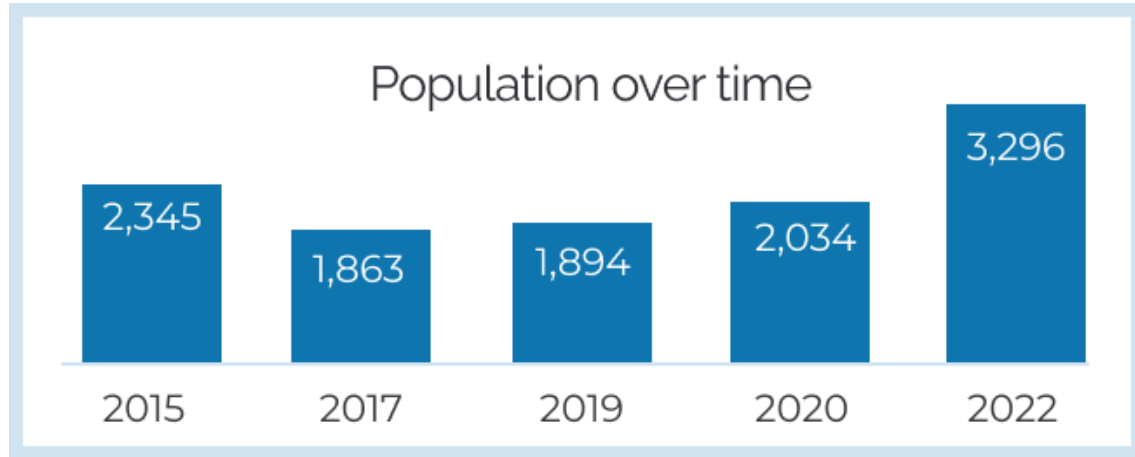
Planning Commission, March 2, 2023



LONG BEACH  
DEPARTMENT OF HEALTH  
AND HUMAN SERVICES

CITY OF  
LONG BEACH

# 2022 Point in Time Count at a Glance



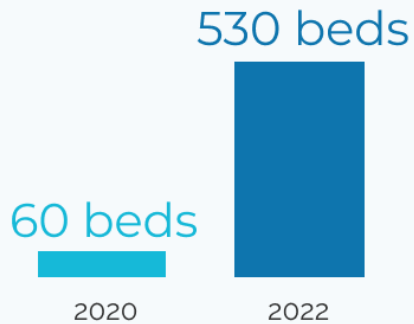
# 2022 Point in Time: Sheltered and Unsheltered

21%

of unsheltered people are living in a vehicle



Increase in Interim Housing



## 2022 Sheltered Vs. Unsheltered

31% Sheltered (1,009)

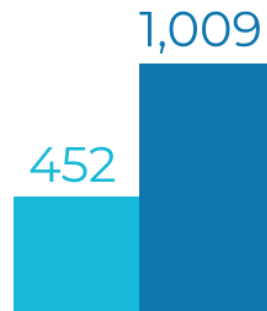


69% Unsheltered (2,287)

2020 2022



People Unsheltered (non-vehicle)  
22% increase



People Sheltered  
123% increase



# 2022 Point in Time: Underlying Conditions Continued

**Nearly 44%** said they became homeless due to unemployment or financial resources, an increase from 35% in 2020



## Experiences of Violence/Trauma



**645** people (38%) identified experiencing at least one type of violence in their lives

**210** were fleeing violence when they became homeless



**480** were formerly in foster care

## Health & Behavioral Health



**24%** have a traumatic brain injury (556)

**23%** have a developmental disability (519)

**1,214** people interviewed have a severe mental illness (a 143% increase)

**951** have a substance use disorder (a 70% increase)



**36%** have a physical disability (826)

**31%** have a chronic medical condition (704)

## Family Disruption



**27%** said they became homeless due to family disruption or relationship problems

## Race & Homelessness

**26%**

reduction in the number of people experiencing homelessness in Long Beach if the disproportional experiences of homelessness among Black, Indigenous, and Pacific Islander communities were eliminated

# The Emergency Proclamation for Homelessness

# Emergency Proclamation

- City Council adopted a resolution proclaiming the existence of a local emergency caused by conditions or threatened conditions of homelessness within the City of Long Beach, which if not corrected, constitutes an imminent and proximate threat to the safety of persons and property within the City.
- Allows for relief and streamlining of City procurement process, designating City employees as disaster workers, and streamlining hiring practices and project delivery.

# Emergency Proclamation

## Metrics

- Decrease number of persons experiencing unsheltered homelessness
- Increase housing placements
- Increase starts on new affordable housing options
- Increase temporary and permanent housing units (including utilization of Housing Choice Vouchers)
- Increase outside aid through access to mental health and substance use beds
- Decrease disproportionality in which Black, Indigenous and Pacific Islander persons experience homelessness
- Decrease number of persons that die in unsheltered situations
- Decrease number of persons falling into homelessness
- Increase regional partnerships to address the homeless crisis
- Increase multi-departmental efforts to address violence on or perpetuated by people experiencing homelessness
- Increase speed of delivering critical projects addressing homelessness

# Emergency Proclamation

## Human Resources

### Human Resources & Staffing

- Under California Government Code Section 3100-3109 all Public Employees, including City of Long Beach employees, are designated Disaster Service Workers and may be called upon to help serve during an emergency, including a local emergency.
- The emergency proclamation will allow greater flexibility to reassign staff resources to specific focus areas as needed.
- Goal will be to seek volunteers from work areas with specific expertise necessary to serve in the emergency response.
- Afford the City the ability to utilize contracts to supplement specific staffing needs.



# Emergency Proclamation

## Human Resources

### Onboarding & Hiring

- The emergency proclamation will help expedite the recruitment and selection process for unclassified positions and shorten the normal hiring and onboarding timeframe.
- Collaborate with the Civil Service Department and Civil Service Commission to review and modify recruitment and selection processes for classified positions, as needed.
- Engage with the City's labor partners, as needed, on any items subject to the meet and confer process.

# Emergency Proclamation

## Procurement

- Increase staff purchasing authorization during emergency
  - Purchasing Agent increased from \$100,000 to \$500,000
  - City Manager increased from \$200,000 to \$1,000,000
- Increase City Council approval threshold from \$200,000 (normally) to \$1,000,000 during emergency
- Notification to City Council of all purchases between \$200,000 and \$1,000,000 can occur after the fact
- Procurement processes will be streamlined to expedite homeless related purchasing and contracts, including for required construction activities associated with this proclamation

## Finance

- This is a local emergency, so there is no FEMA reimbursement opportunity
- Staff will identify unspent previous appropriations that City Council could choose to redirect to this emergency

# Emergency Proclamation

## Examples of Opportunities

- As the City identifies locations for additional emergency shelters or Safe Parking sites, the Public Works Department will be able to construct the required site improvements and the Homeless Services Bureau would be able to move quickly to contract a provider to operate the location.
- Allows Homeless Services Bureau to quickly fill vacant positions to conduct outreach and provide mental health services as well as to manage additional funding sources.
- Allows other City staff to support housing access by participating as a calling team to request landlords partner with the Housing Authority to accept housing vouchers.
- Builds a cross-departmental team to establish strategies and outreach to surrounding jurisdictions to determine how they also work to reduce homelessness.
- Allows for faster contracting, procurement of supplies, and construction to improve interim and permanent housing opportunities – including improvements to the Luxury Inn, construction of new shelters and tiny homes.

# Emergency Ordinance

## Streamlining City Process

- Provides flexibility for property-owners to install adequate fencing to secure vacant buildings and lots.
- Provides for expedited approval of shelters, safe parking, mental health care and other regulated land uses.
- Keeps tenants in place when unpermitted units are discovered, coordinates Code, Planning and Building activities to legalize units when safe and possible.
- Accelerates processing of permanent supportive housing to provide longer-term solutions.
- Assures that homeless-related capital improvement projects are given priority in permitting and inspections.

# Implications for Planning Commission

## Temporary Changes

- Certain homeless related projects ranging from shelter to mental health care clinics will not require Planning Commission approval.
- 100% affordable projects are already staff-level decisions; however they temporarily will not require zone-changes or General Plan amendments. Appeal procedures also change.
- ADU regulations for multifamily units are modified, setting-up a need for Planning Commission to adopt more permanent rules.

# Implications for Planning Commission

## Permanent Changes

- Staff will bring an omnibus set of zoning code changes in May or June:
  - Modify 18.21 and 18.29 to allow taller fences and great site controls, conform Title 21 to these changes.
  - Modify 21.25.502.B to eliminate Conceptual Site Plan Review.
  - Modify use tables to allow shelters and homeless related uses in more zones, as well as temporary shelter and other uses in all/most zones.
  - Modify Ordinance 21-0028 to create a temporary tenant-occupied multifamily ADU program until a more comprehensive ADU ordinance is adopted in 2024.
  - Modify existing no net loss requirements to comply with AB 1397, create a by-right approval process for housing sites inventory parcels.
  - Provide clarification language around employee housing and modular structures.
  - Update the definition of family per HCD guidance.

# Other Department Changes

## Permanent Changes

- Pre-approved ADU program.
- Permit software upgrade/replacement.
- Updated federal Action Plans (HUD) and NOFA schedule.
- Significant staffing enhancements in Building and Planning (23-24 Budget request).
- Completion of all Housing-Element re-zonings (2024)
- Comprehensive ADU Ordinance Update (2024)
- Updates to Downtown (PD-30) and Shoreline (PD-6) plans.
- Zoning Code updates special group residences and senior housing.
- Zoning Code updates to existing non-conforming housing built over current density limits and in need of replacement.
- Continued implementation of Inclusionary Ordinance.
- General Plan LUE “mini update” to fix tables, minor technical issues.

# Structure of the Emergency Response



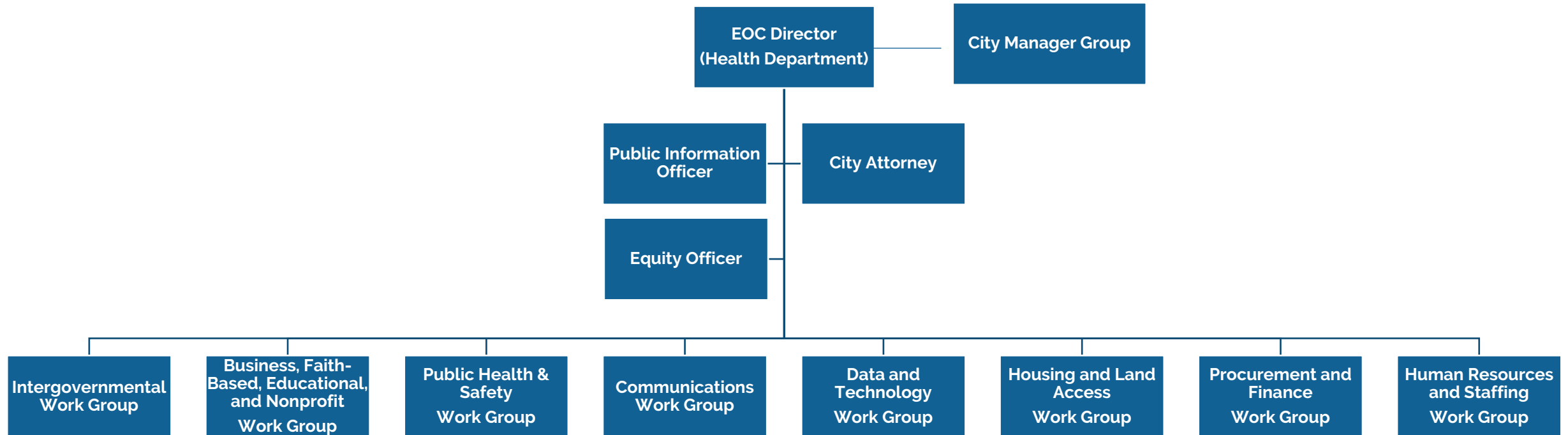
# Incident Command System

## What is the Incident Command System (ICS)?

- The Incident Command System is a FEMA-approved standardized approach to the command, control, and coordination of emergency response
- The Incident Command System allows organizations and personnel from a variety of departments and agencies to work collaboratively to respond to the incident
- Provides a framework to manage Federal, State, and Regional assets assigned to the incident over a widespread geographic area for a prolonged period of time
- Provides logistical and administrative support to ensure that operational staff, such as Health, Police, Public Works, Fire etc., can meet the overall objectives

# Mission and Organizational Chart

**Mission Statement:** To reduce the number of persons experiencing homelessness in the City and the region by increasing housing opportunities and enhancing current initiatives that provide field-based outreach, engagement, and supportive services while maintaining the safety and security of the people experiencing homelessness, the general public and staff.



A night scene of a harbor with a large ship and fireworks. The sky is filled with colorful fireworks in shades of green, yellow, and white. The ship is illuminated with lights, and the harbor is lit up with various lights and structures. The water reflects the lights from the ship and the fireworks.

Thank you

Christopher Koontz,  
Department of Development Services