

Mobility. Environment. Community. Economy. Technology



I-710 Corridor Project EIR/EIS

metro.net

I-710 Project Update

September 2017



Metro[™]



Port of
LONG BEACH
The Green Port

THE PORT OF LOS ANGELES LA

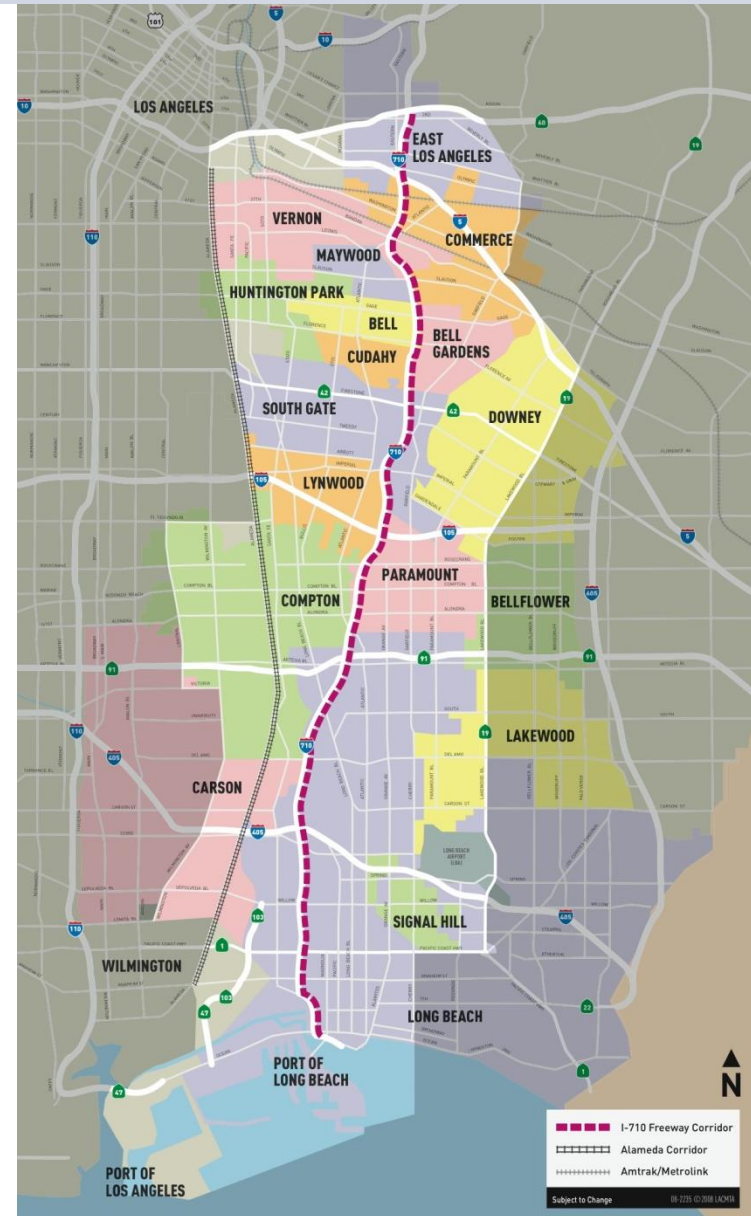


I-710 Corridor Project Update



Public Review:

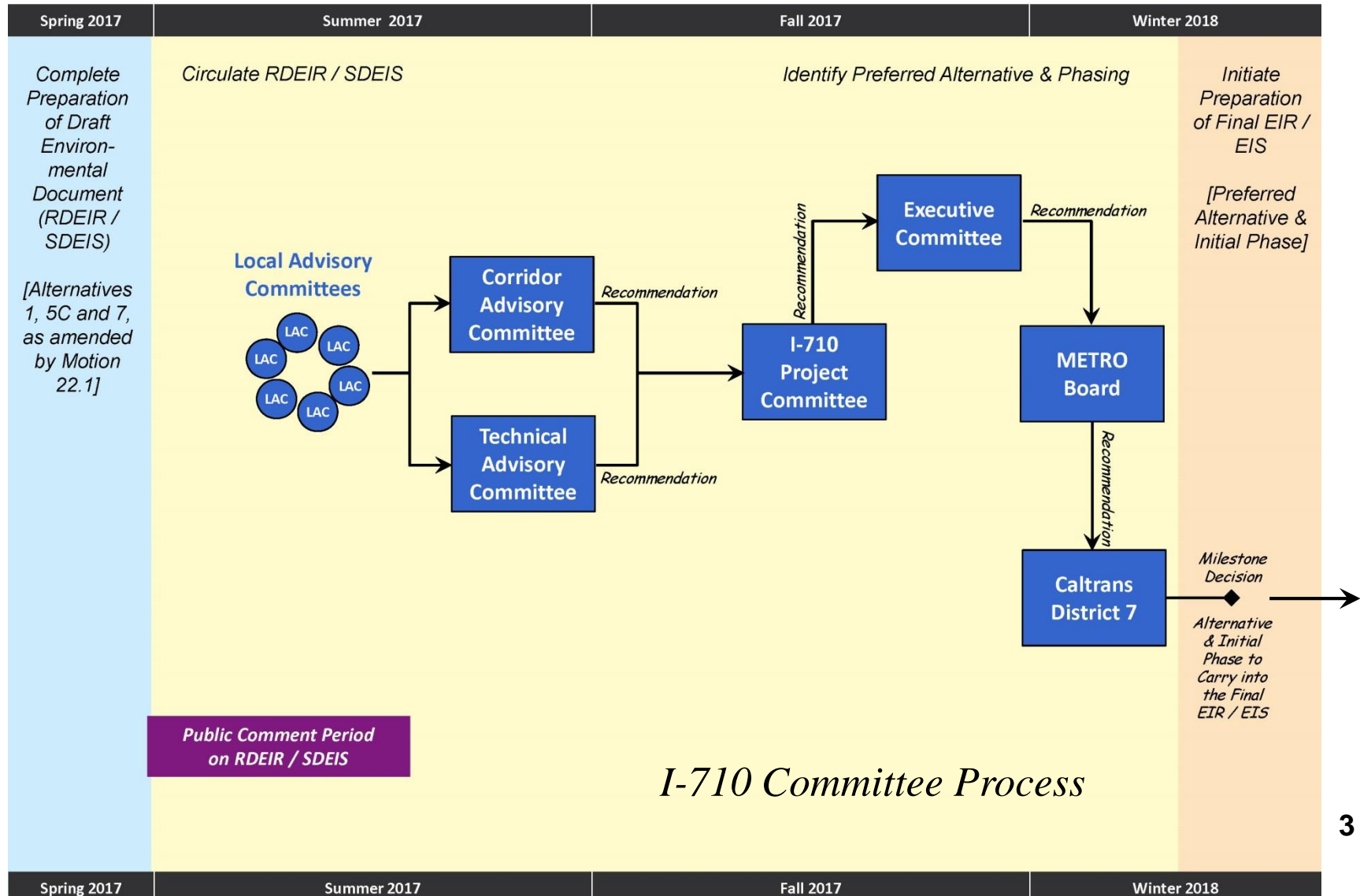
- Recirculated DED released to public on July 21, 2017
- Extended comment period ends 10/23/17
- Public Hearings:
 - 8/23/17 Commerce
 - 8/26/17 Paramount
 - 8/31/17 Long Beach



Decision Process



Identification of a Preferred Alternative and Phasing Plan



I-710 Alternatives

Alternative 1: (No Build) Future Travel Conditions without Further Transportation Improvements

Alternative 5C: Modernizes and Widens the I-710 Freeway (\$6 Billion)

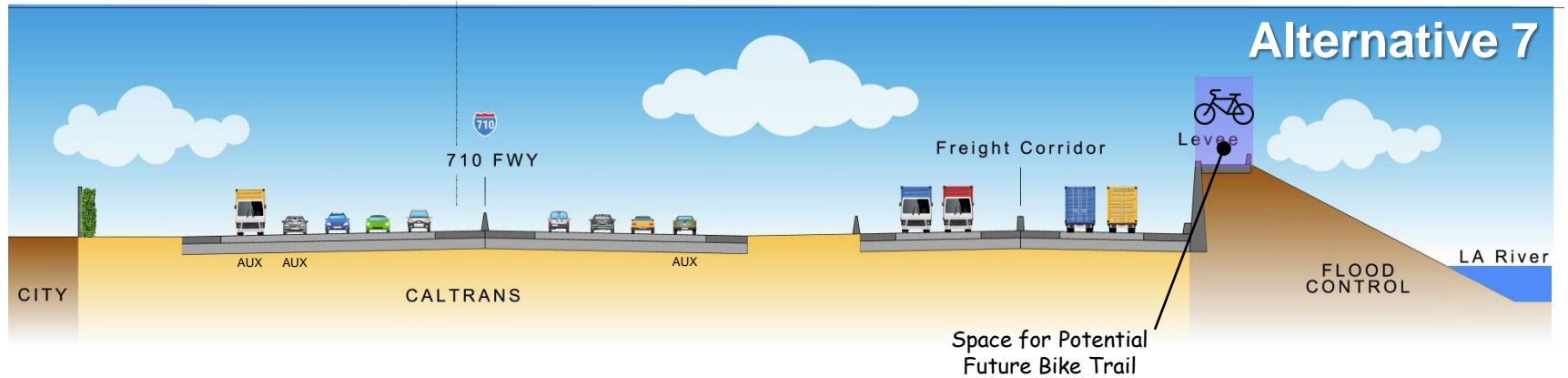
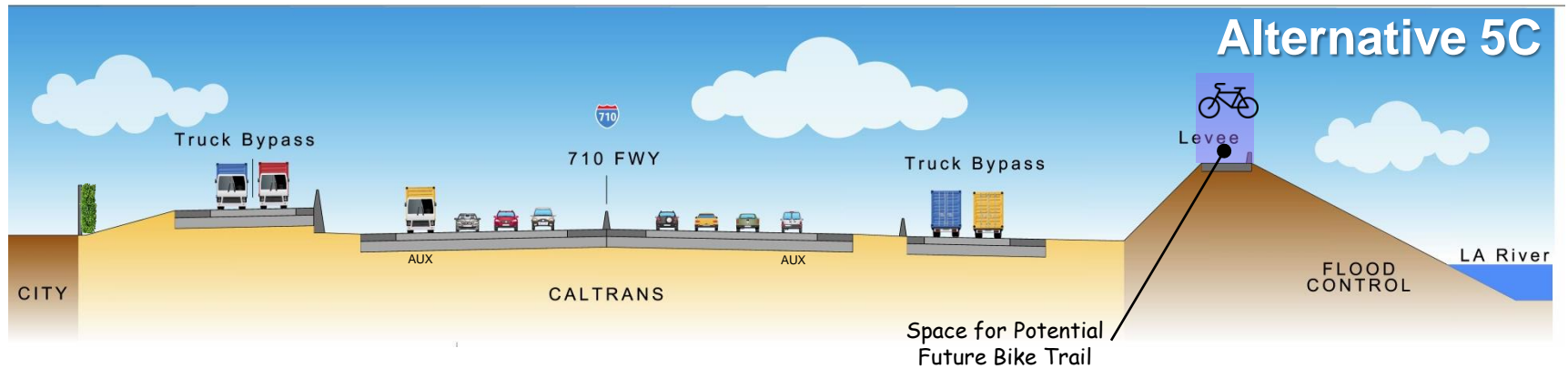
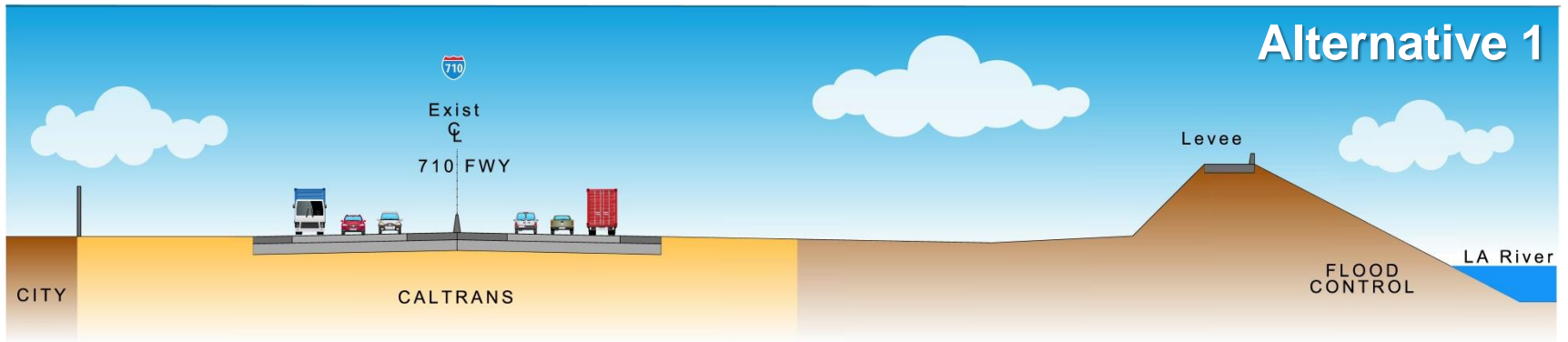
Alternative 7: Modernizes I-710 and Adds “Clean Emissions” Freight Corridor (\$10 Billion)

I-710 Build Alternatives

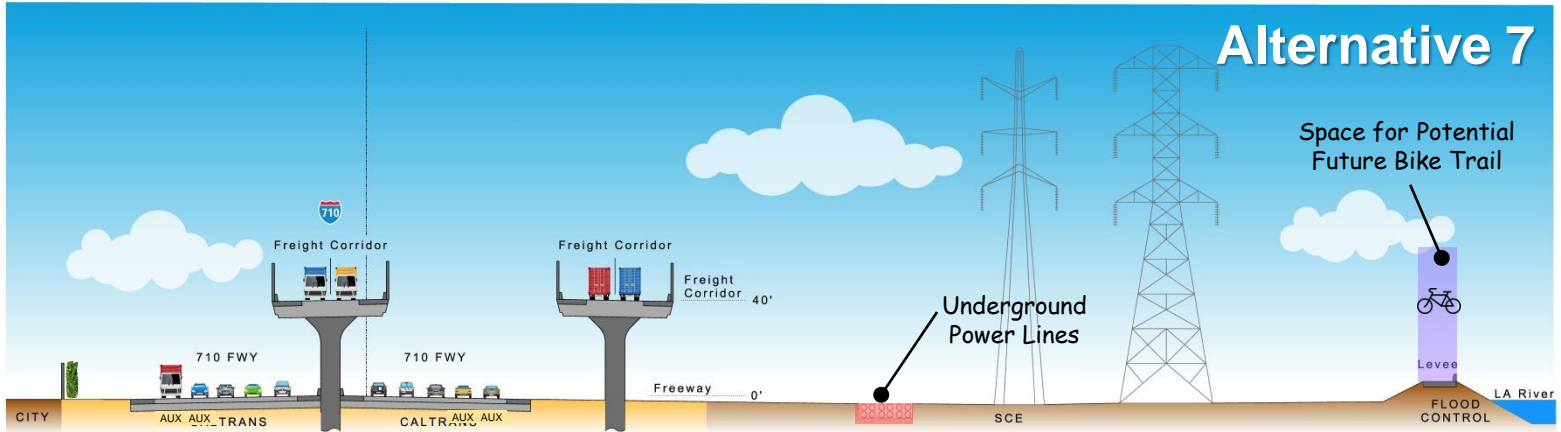
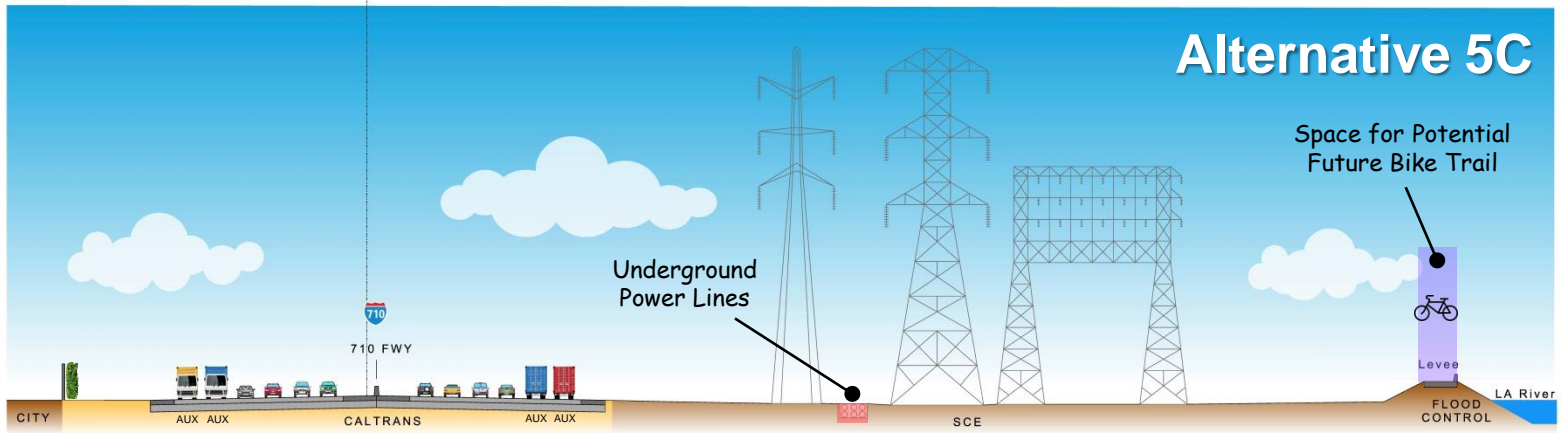
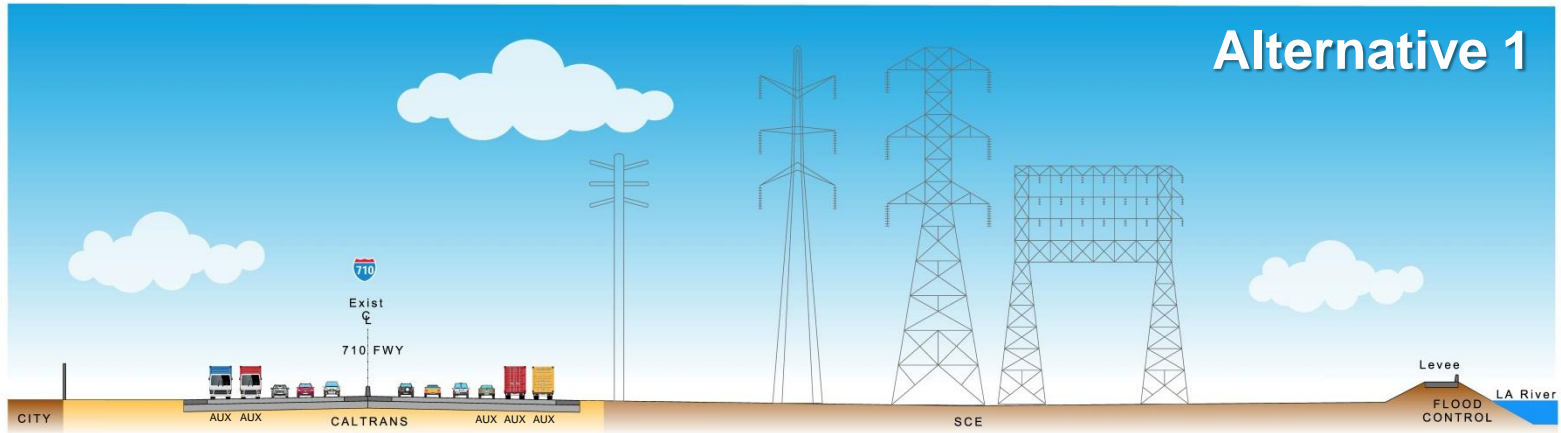
Both Alternative 5C and Alternative 7 include:

- Maximum Goods Movement by Rail
- TSM/TDM/ITS Improvements
- Transit Improvements
- Active Transportation Improvements (Bike / Ped. Connections)
- Consideration of a Public-Private Partnership (PPP) for Financing, Delivery, and Operation
- I-710 Zero-/Near Zero- Emissions Truck Deployment Program
- I-710 Community Health & Benefit Program

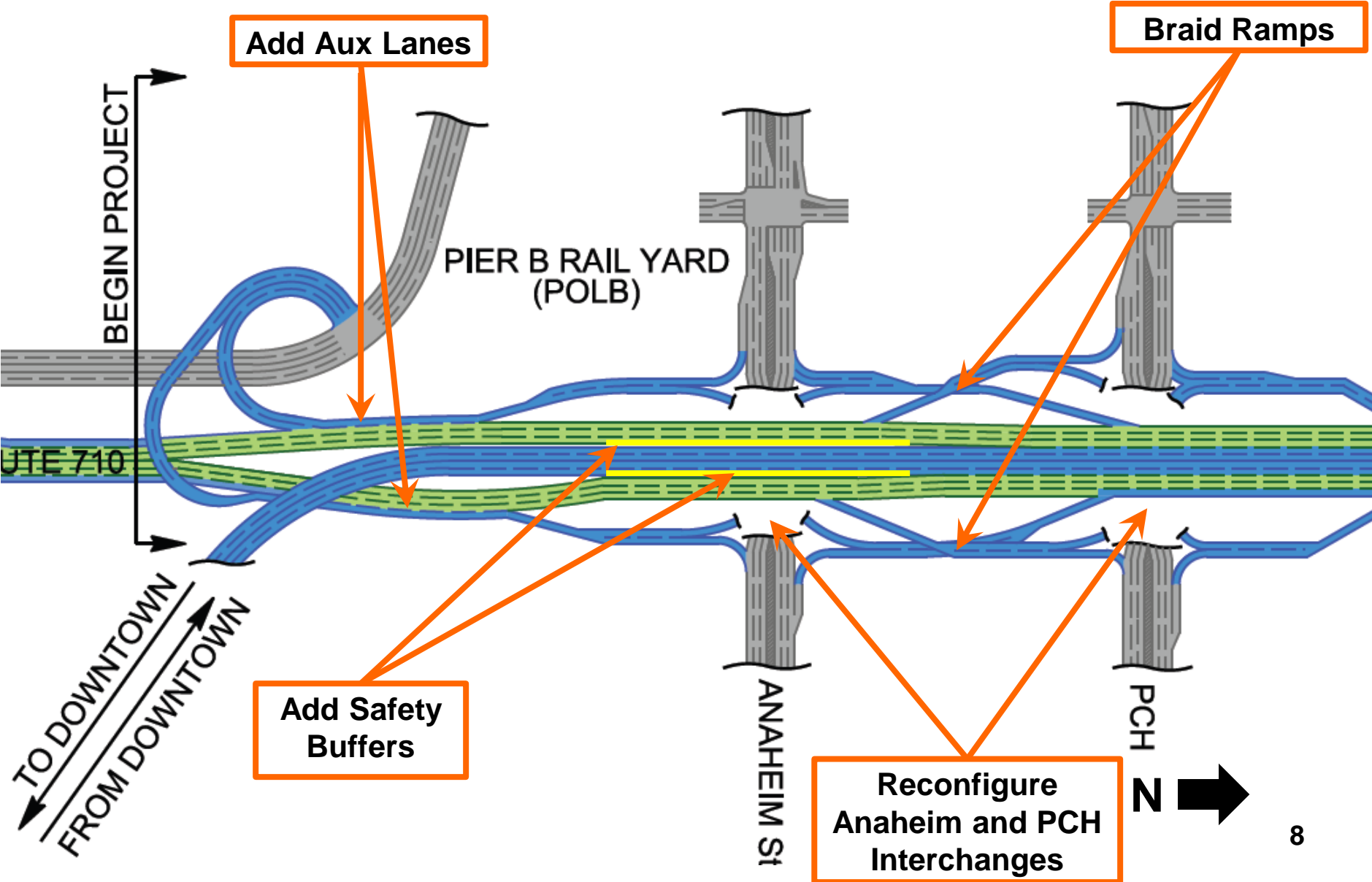
A Between Willow St. and I-405



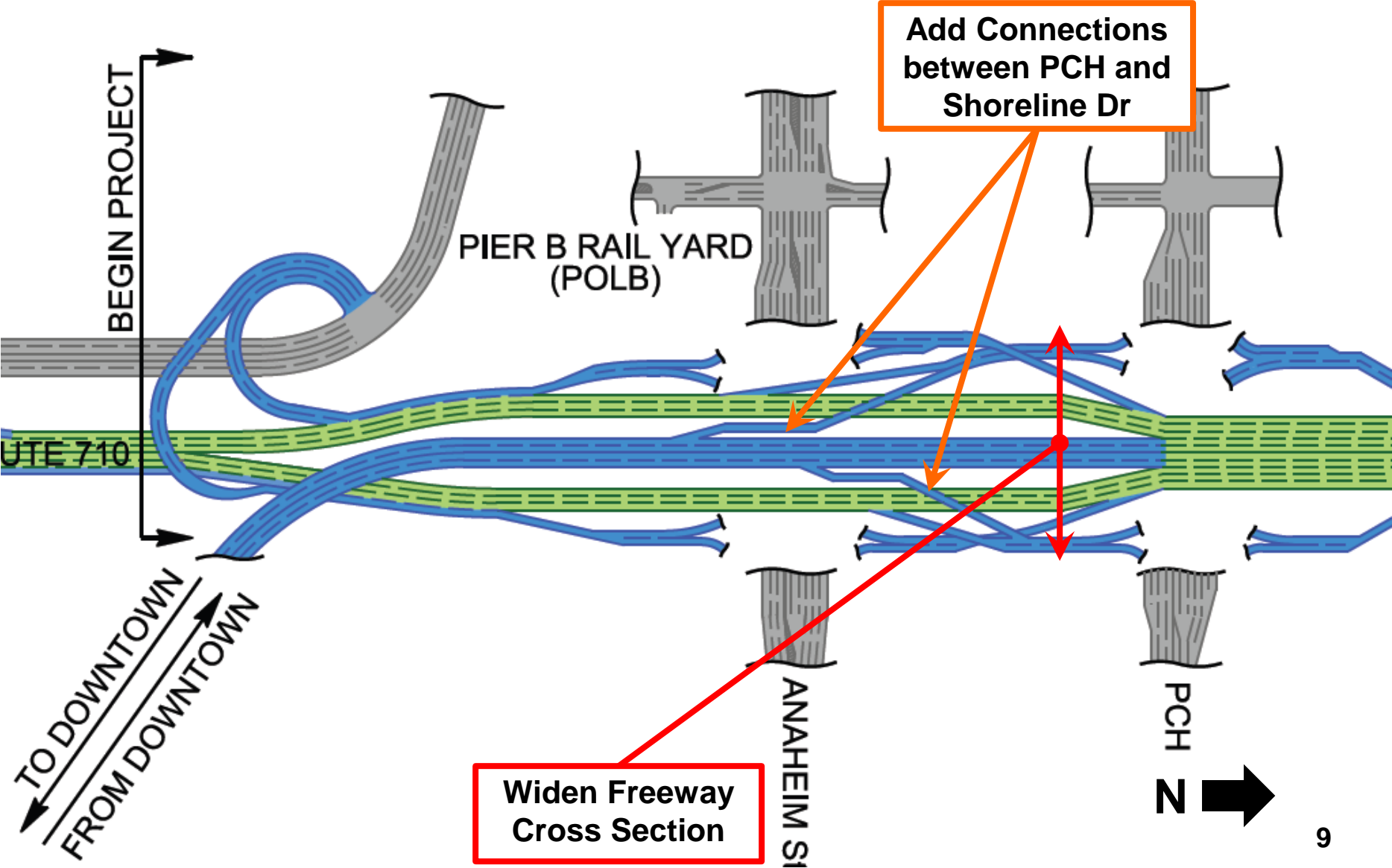
B Between Long Beach Blvd. and SR-91



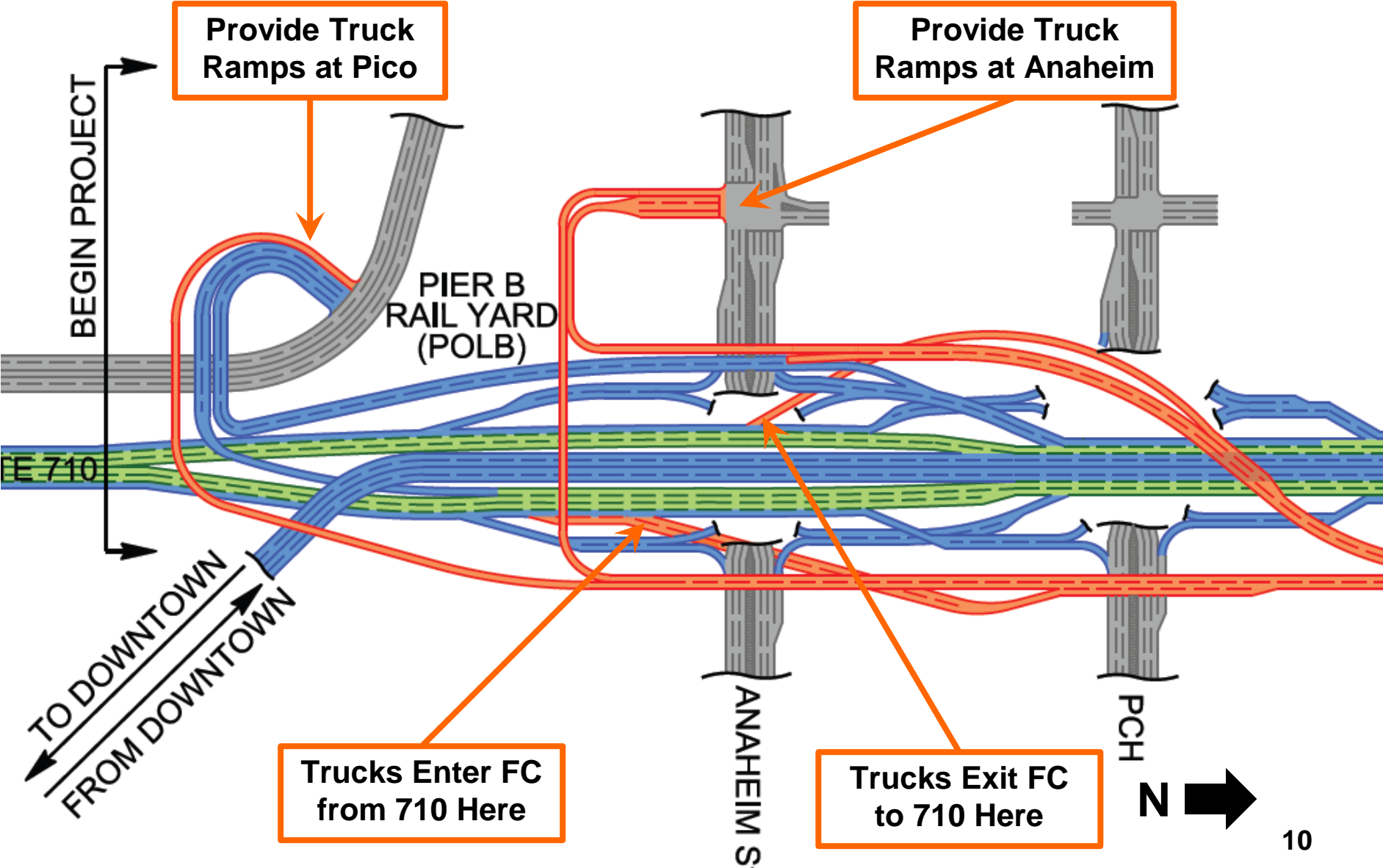
I-710 Design – Alternative 5C



I-710 Design – Alternative 5C Design Option



I-710 Design – Alternative 7

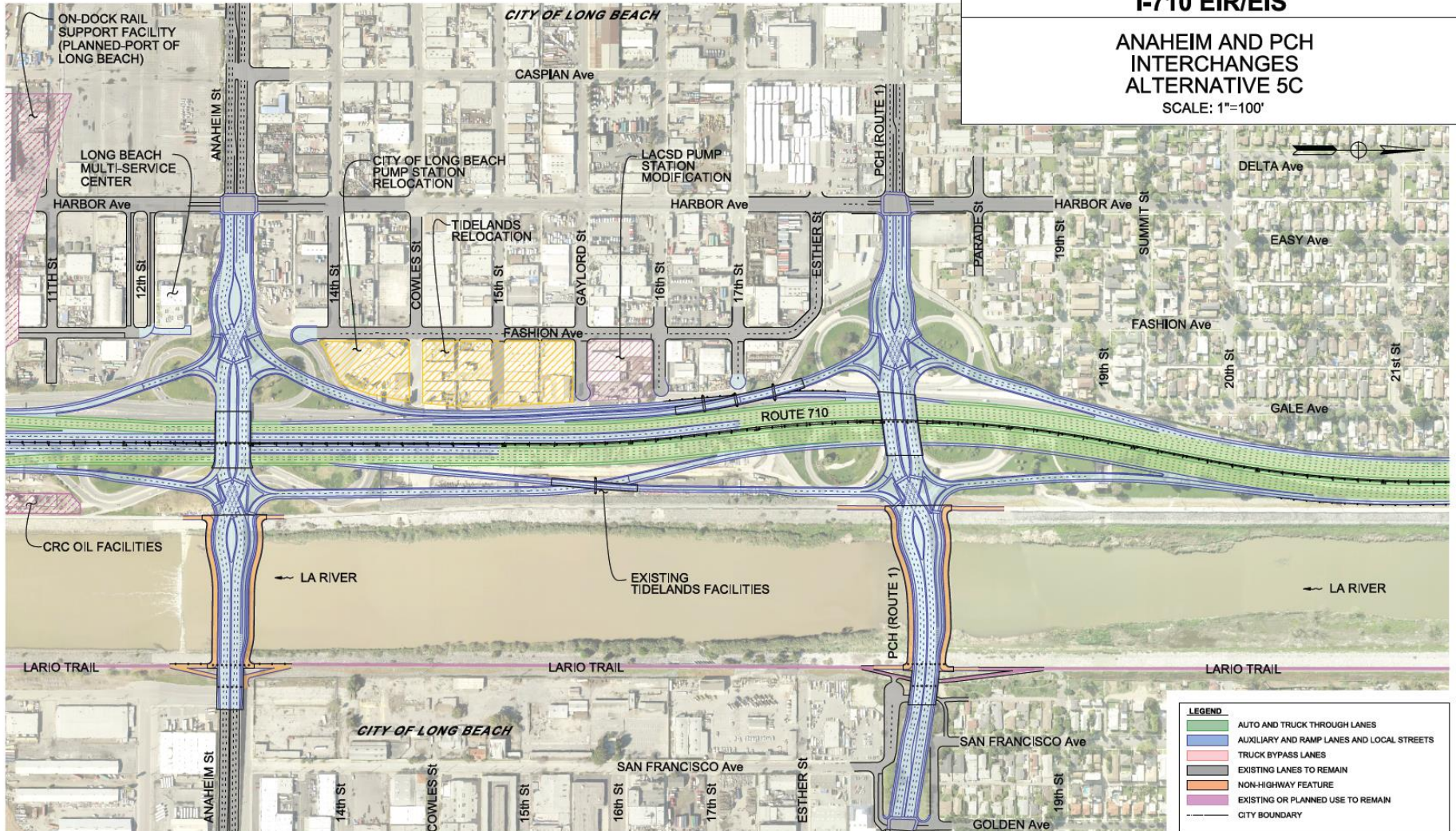


Anaheim/PCH – 5C

I-710 EIR/EIS

ANAHEIM AND PCH INTERCHANGES ALTERNATIVE 5C

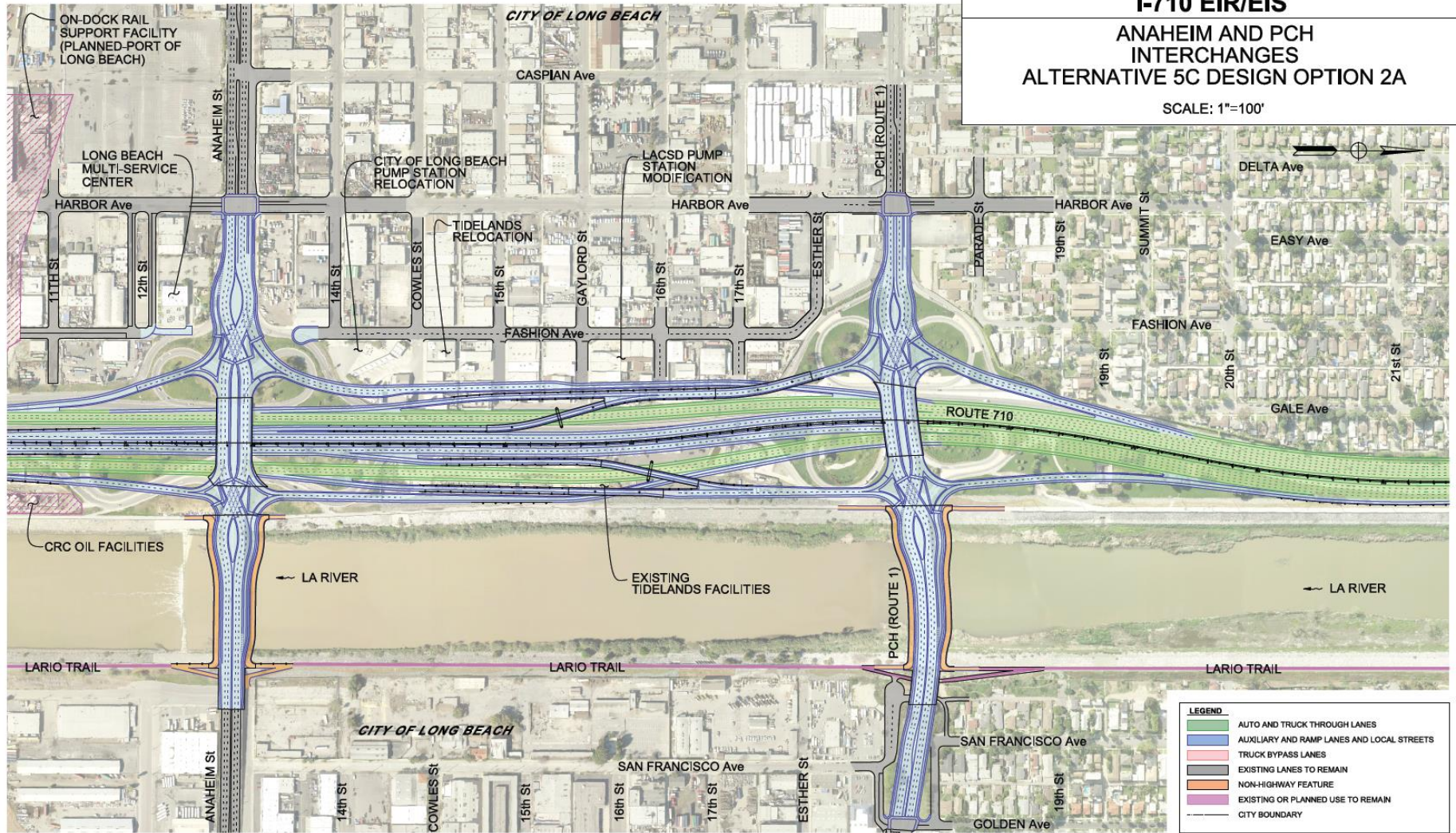
SCALE: 1"=100'



Anaheim/PCH – 5C Design Option

I-710 EIR/EIS ANAHEIM AND PCH INTERCHANGES ALTERNATIVE 5C DESIGN OPTION 2A

SCALE: 1"=100'

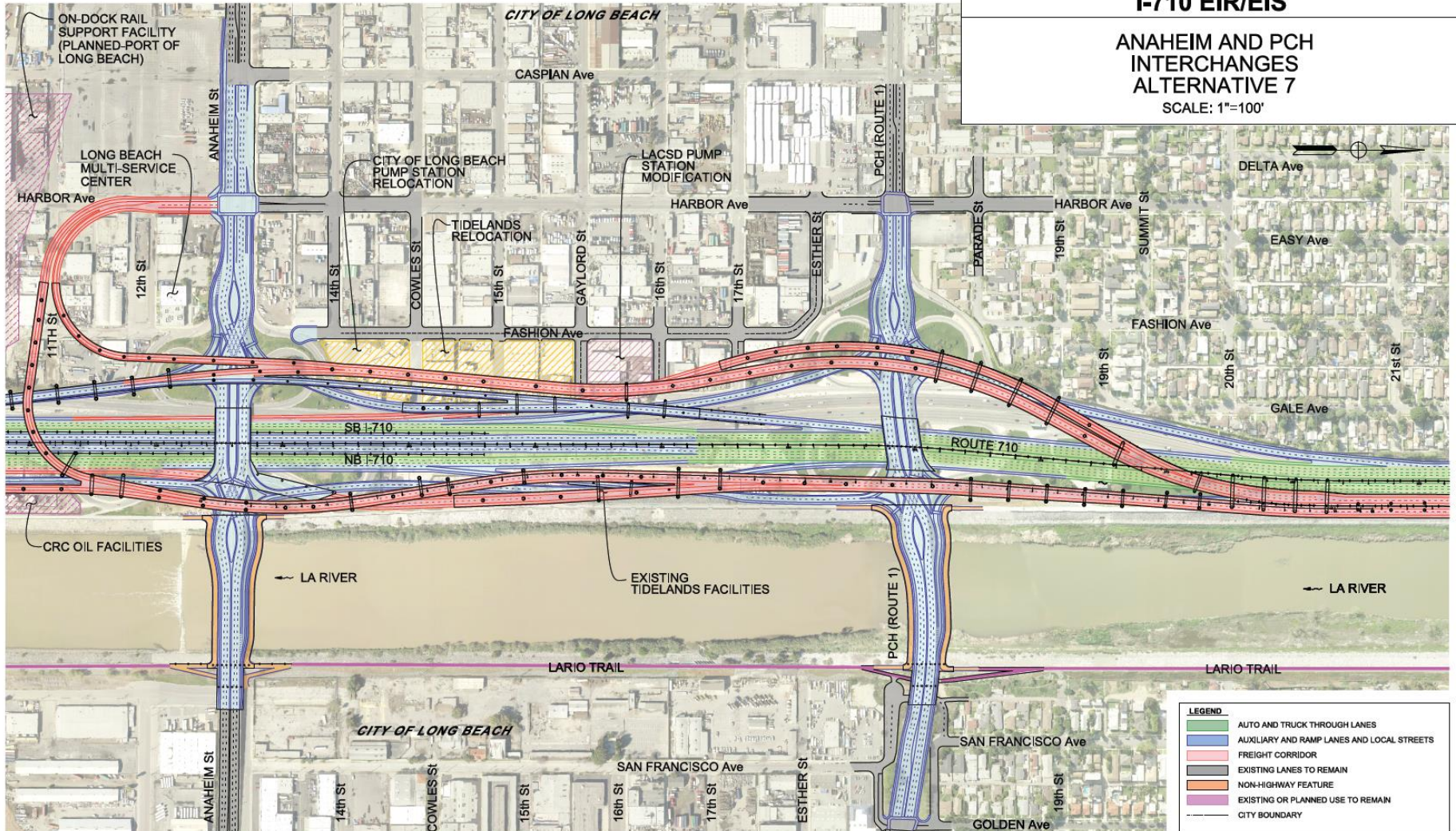


Anaheim/PCH - 7

I-710 EIR/EIS

ANAHEIM AND PCH INTERCHANGES ALTERNATIVE 7

SCALE: 1"=100'



Motion 22.1 – Additional Study Items

Examples:

- Evaluated right-of-way avoidance designs (Alternative 7)
- ZE Truck–Only Option for Freight Corridor (Alternative 7)
- Evaluated high frequency Express Bus Transit along I-710
- Evaluated separate Bike Path Projects within the Study Area
- Integrated five new pedestrian/bike bridges in alternatives
- Verified application of Complete Streets treatments
- Considers other elements to maximize mobility and minimize impacts within study area

**Applicable Studies
Completed and Integrated
into RDEIR/SDEIS.**



Crossing Locations

Humphreys Avenue

- Crosses I-710
- Applicable to Alternatives 5C & 7
- Located in East Los Angeles

Clara Street

- Crosses I-710 and LA River
- Applicable to Alternatives 5C & 7
- Located in Bell Gardens / Cudahy

Pacific Place

- Crosses I-405 and Metro
- Applicable to Alternatives 5C & 7
- Located in Long Beach

Spring Street

- Crosses I-710 and LA River
- Applicable to Alternative 5C Only
- Located in Long Beach

Hill Street

- Crosses I-710 and LA River
- Applicable to Alternative 5C Only
- Located in Long Beach

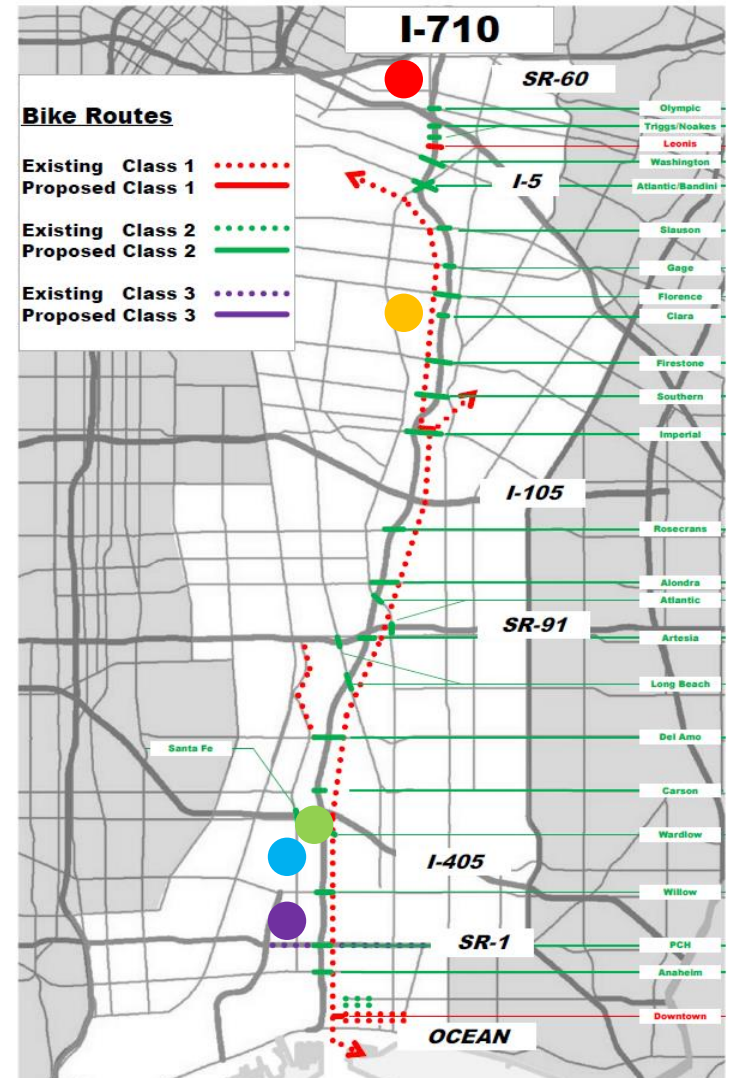
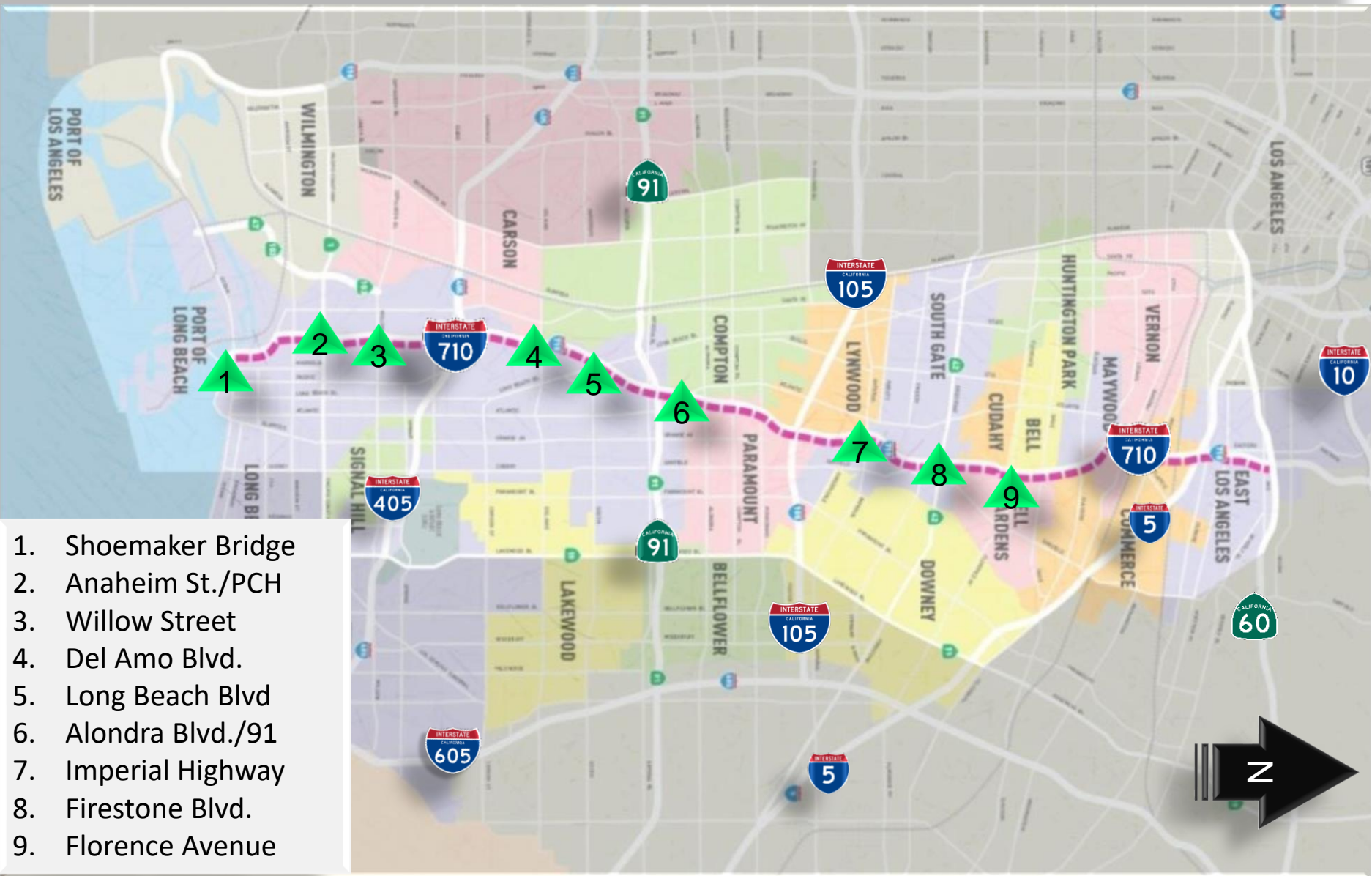


FIGURE 1 – I-710 BIKE/PED CROSSING UPGRADES

Early Action Projects - Freeways



1. Shoemaker Bridge
2. Anaheim St./PCH
3. Willow Street
4. Del Amo Blvd.
5. Long Beach Blvd
6. Alondra Blvd./91
7. Imperial Highway
8. Firestone Blvd.
9. Florence Avenue

Early Action Projects - Freeways

Project	Current Phase	Could be ready for Construction by:
Florence Ave. Interchange	Environmental	Late 2021
Firestone Boulevard Interchange		
Imperial Highway Interchange		
Alondra Boulevard Interchange		
Long Beach Boulevard Interchange		
Del Amo Boulevard Interchange		
Willow Street Interchange		
Anaheim/PCH		
Shoemaker Bridge		