

Aquarium of the Pacific Front Addition

Pacific Visions | Expanded Changing Exhibit | Expanded Retail | New Front Lobby

EXISTING AQUARIUM

TOTAL FLOOR AREA: 166,447sf

LOT SIZE: 276,371sf (6.34 acres)

LOT COVERAGE: 220,275sf

FLOOR AREA RATIO: .60

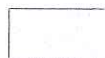
AQUARIUM ADDITION


TOTAL FLOOR AREA: 189,777sf

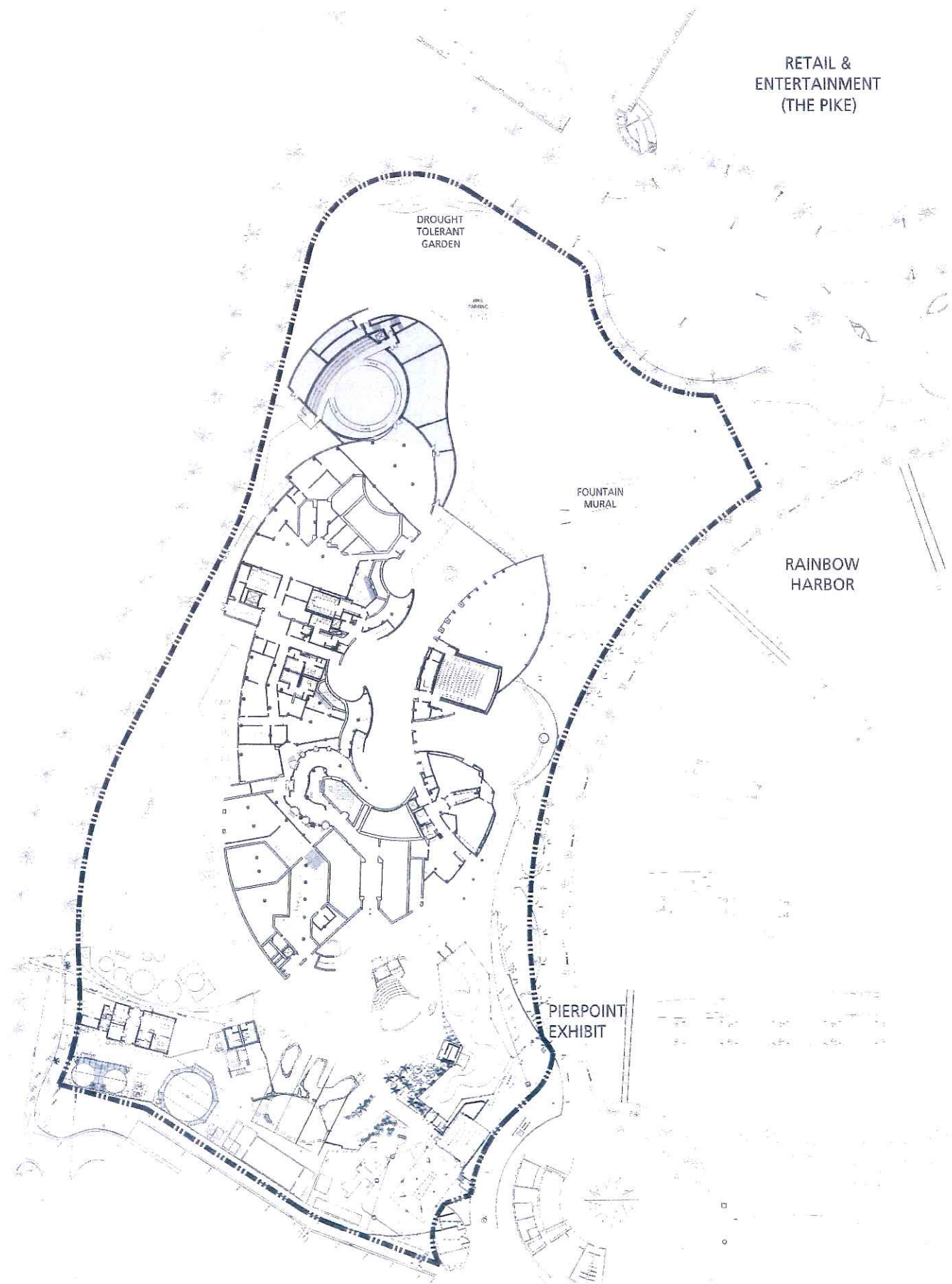
LOT SIZE: 276,371sf (6.34 acres)

LOT COVERAGE: 234,215sf

FLOOR AREA RATIO: .69

 **AQUARIUM ADDITION**

 **LOT LINE**



SITE PLAN

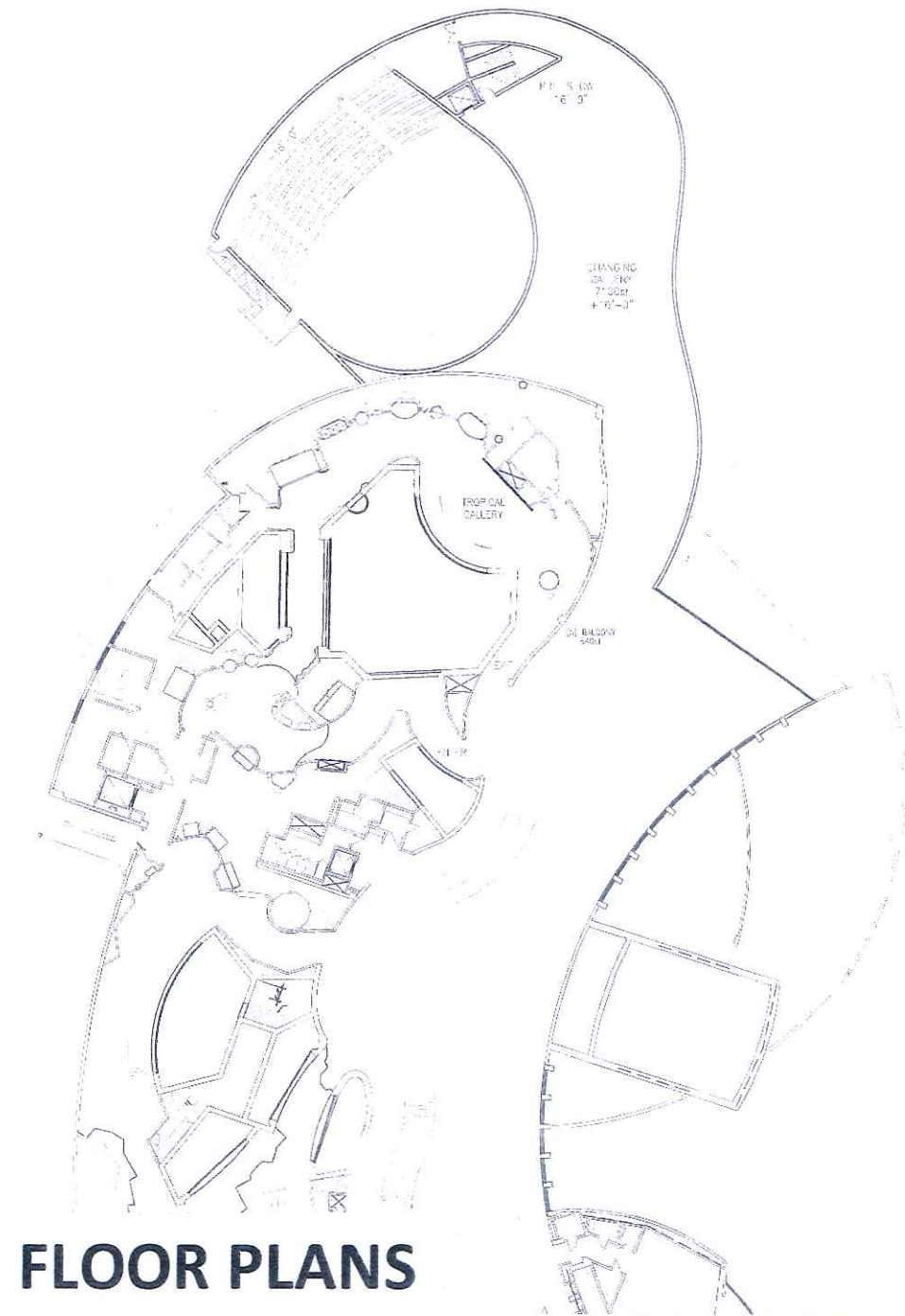
SITE PLAN

EHDD
**Esherick Homsey
 Dodge & Davis**
 Architecture
 Interior Design
 Graphic Design
 500 Treat Avenue
 San Francisco
 California 94110
 arch@ehdd.com
 415.285.3866 fax
 415.285.9193

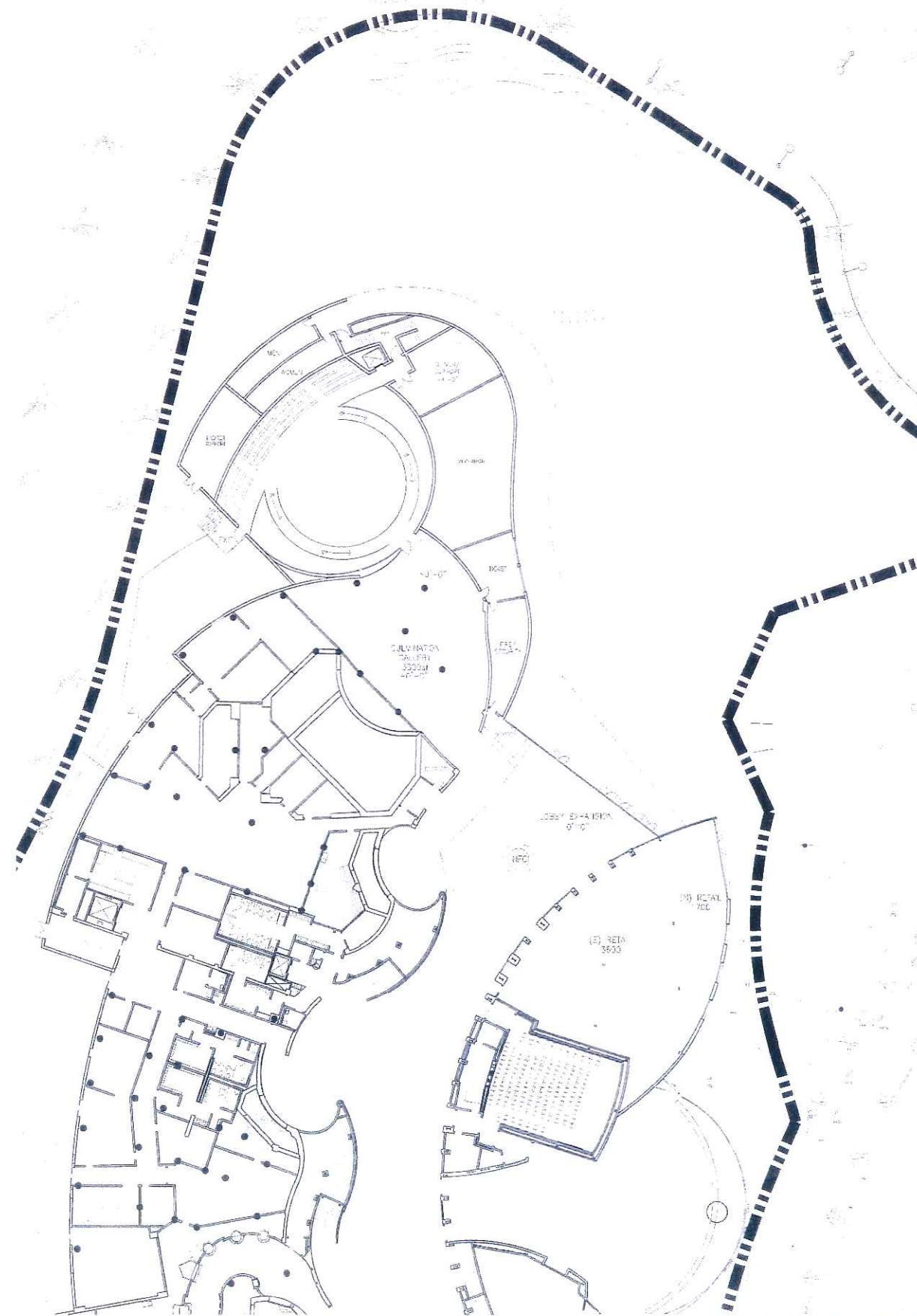

**AQUARIUM
 OF THE PACIFIC**
PACIFIC VISIONS
 01.13.10



1/32" = 1'-0"



SECOND FLOOR

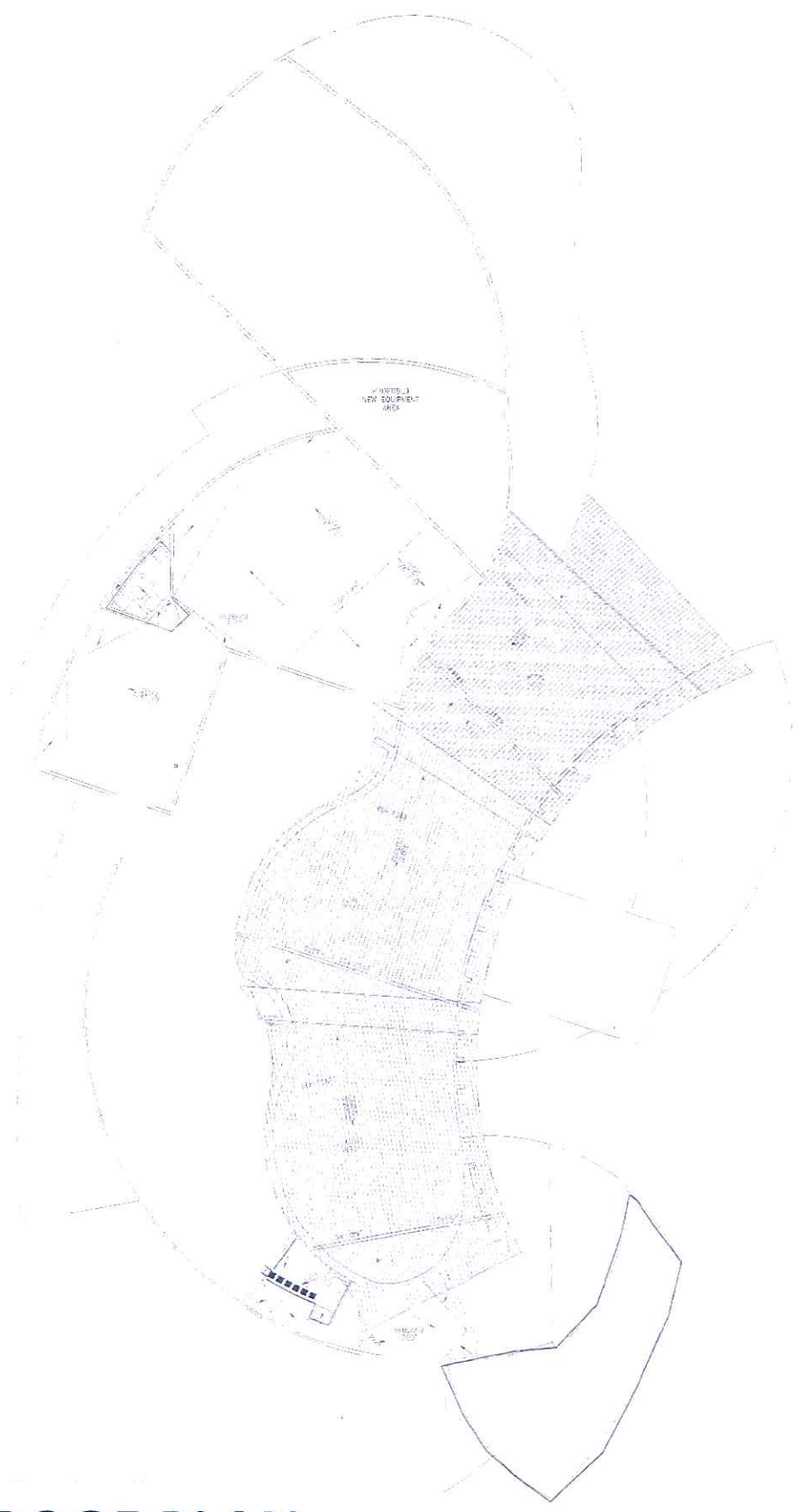


FIRST FLOOR

FLOOR PLANS

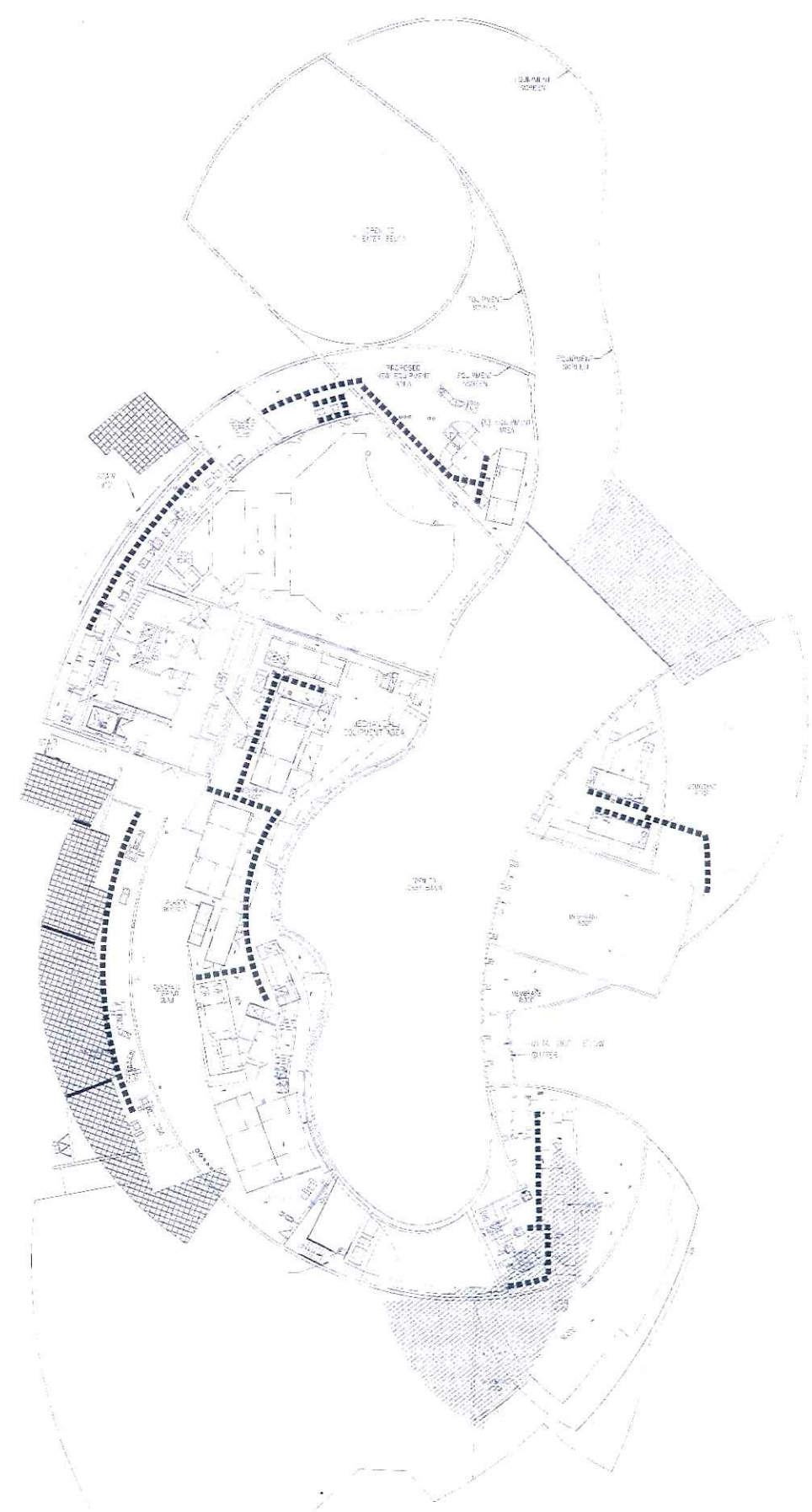


1/16" = 1'-0"



ROOF PLAN

ROOF PLAN



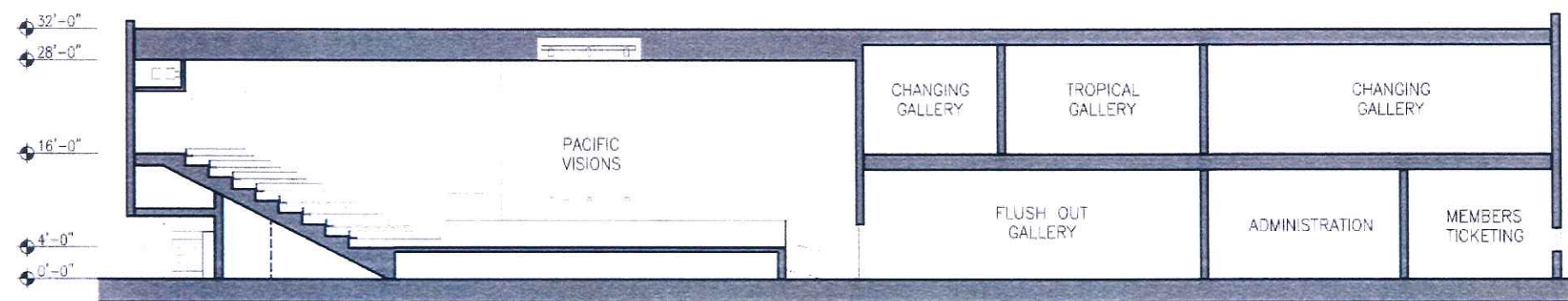
SERVICE LEVEL

EHDD
Esherick Homsey
Dodge & Davis
 Architecture
 Interior Design
 Graphic Design
 500 Treat Avenue
 San Francisco
 California 94110
 arch@ehdd.com
 415.285.3866 fax
 415.285.9193


AQUARIUM
 OF THE **PACIFIC**
PACIFIC VISIONS
01.13.10

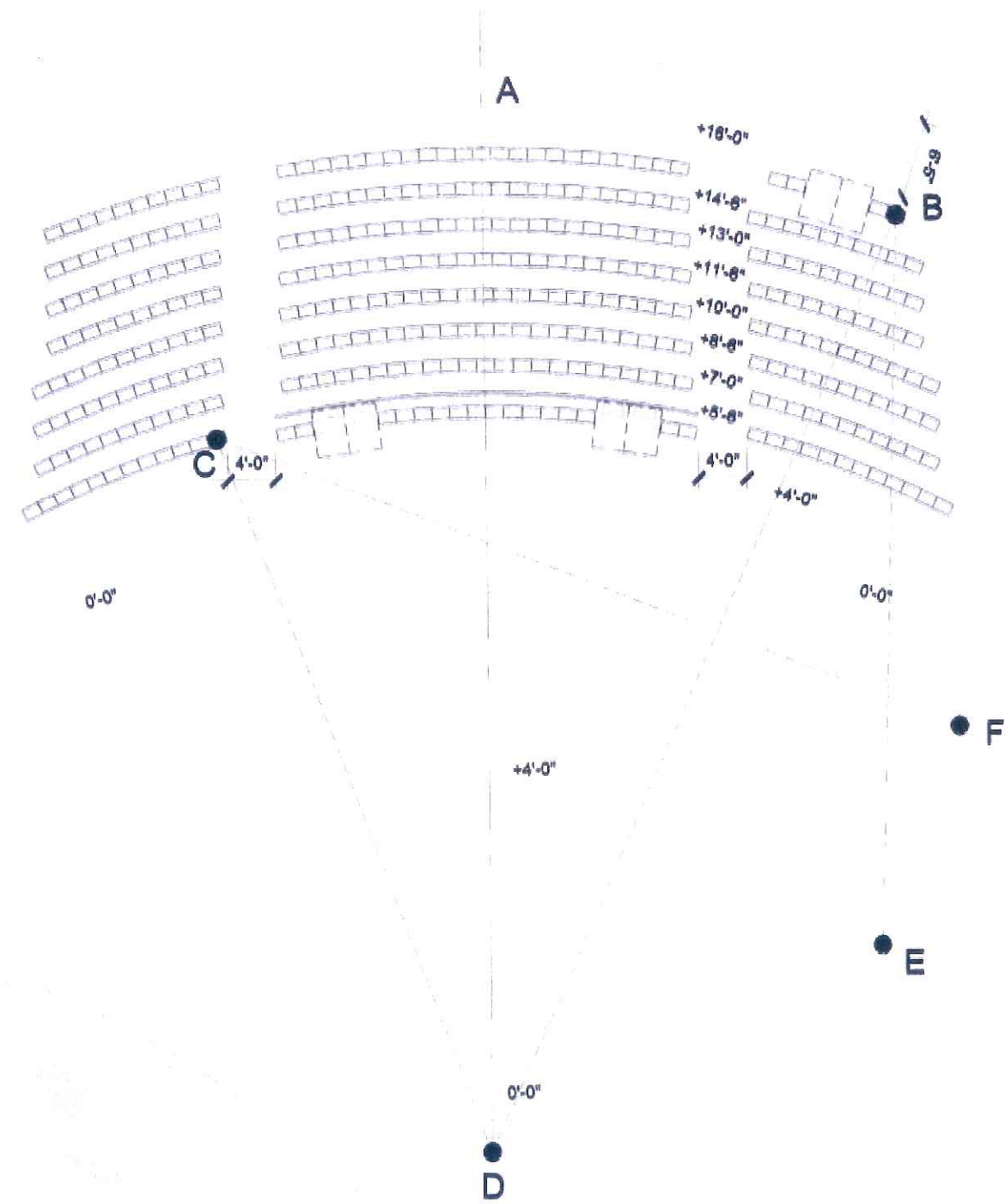


1/16" = 1'-0"



BUILDING SECTION

EHDD ARCHITECTURE
09.08.09



1 SEATING PLAN - BENCH SEATING AT +16'-0" LEVEL

1/8" = 1'-0"

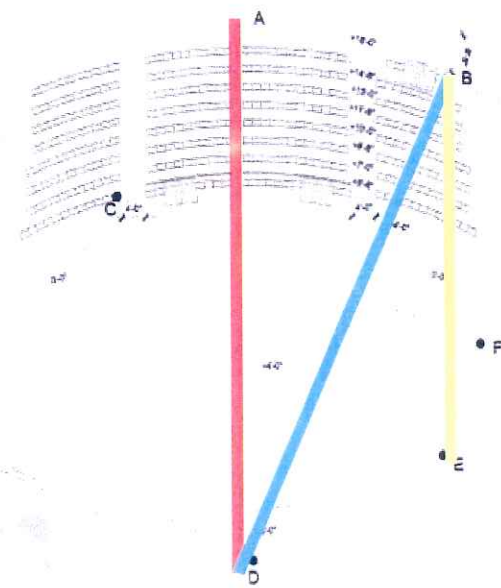
SEATING TOTALS

FIXED SEATING	341
WHEELCHAIRS	6
TOTAL SEATING	347

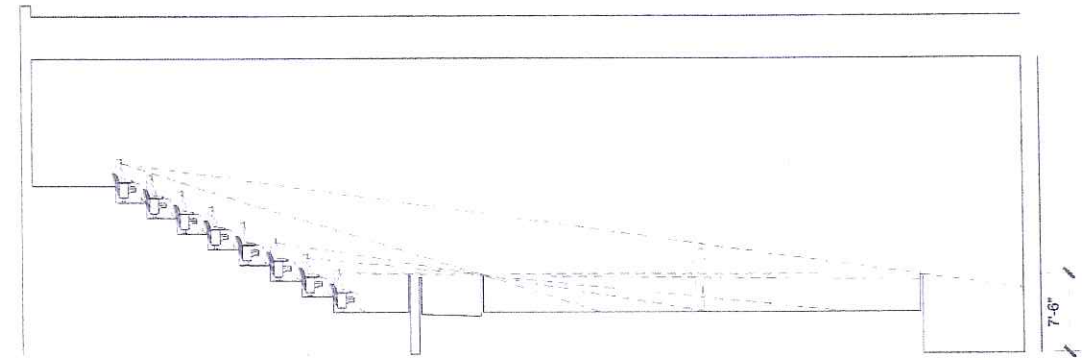


APPROACH+CO. LOCKERIE, ARCHITECTS
 1000 10th Ave, Suite 1000, San Francisco, CA 94103
 TEL: 415.774.4444 FAX: 415.774.4445
 WWW.APPROACHCO.COM

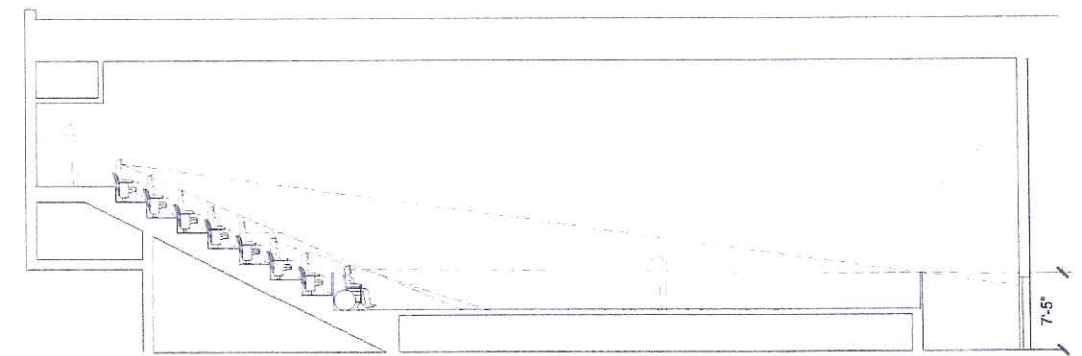
PROJECT: AQUARIUM OF THE PACIFIC
 NAME: SK-002
 DATE: AUG 26 09
 DRAWING: SK-002
 DRAWN BY: EB




1 SIGHTLINE SECTION B-E
1/8" = 1'-0"



2 SIGHTLINE SECTION B-D
1/8" = 1'-0"



1 CENTERLINE / SIGHTLINE SECTION A-D
1/8" = 1'-0"

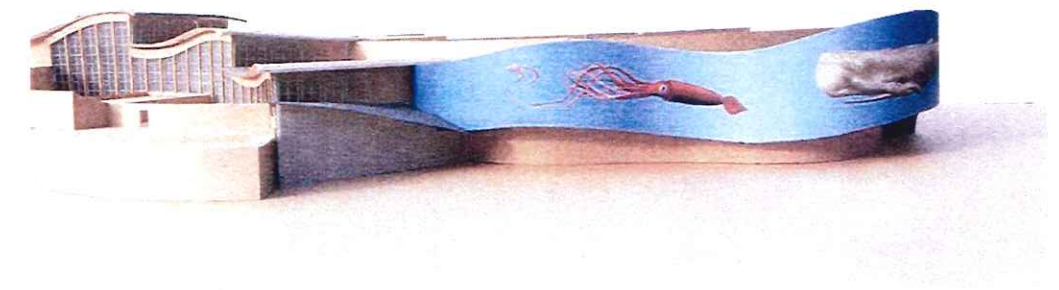
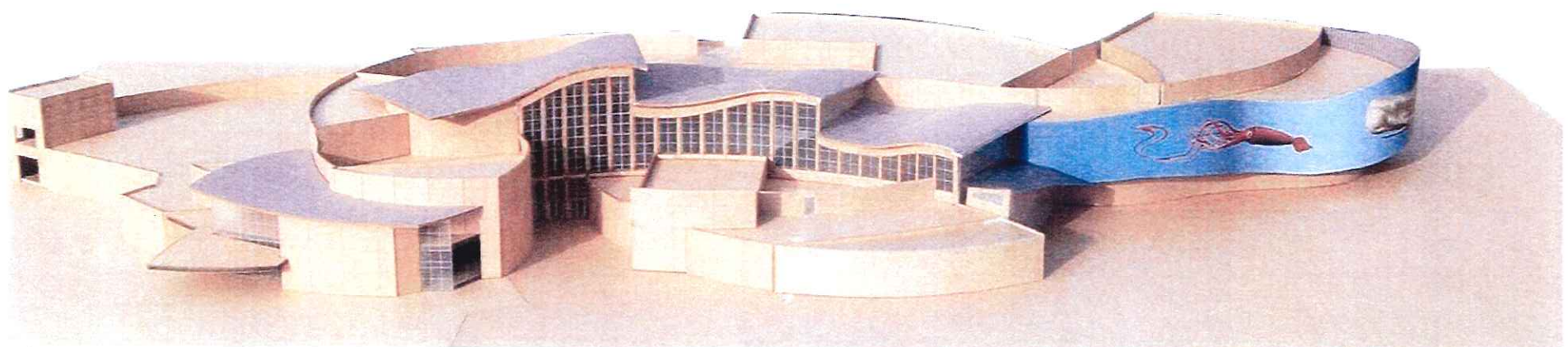
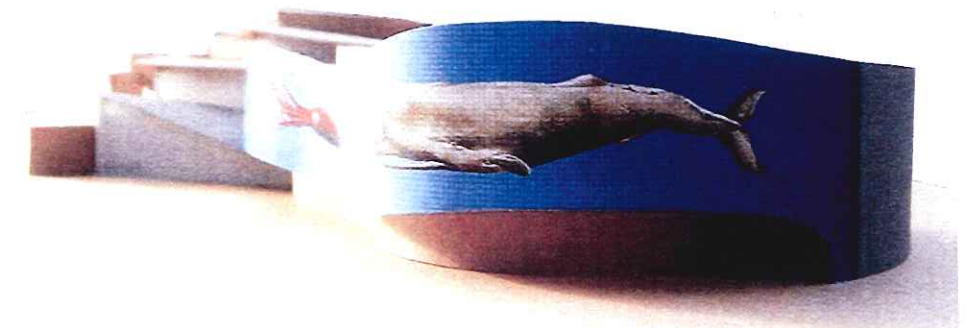
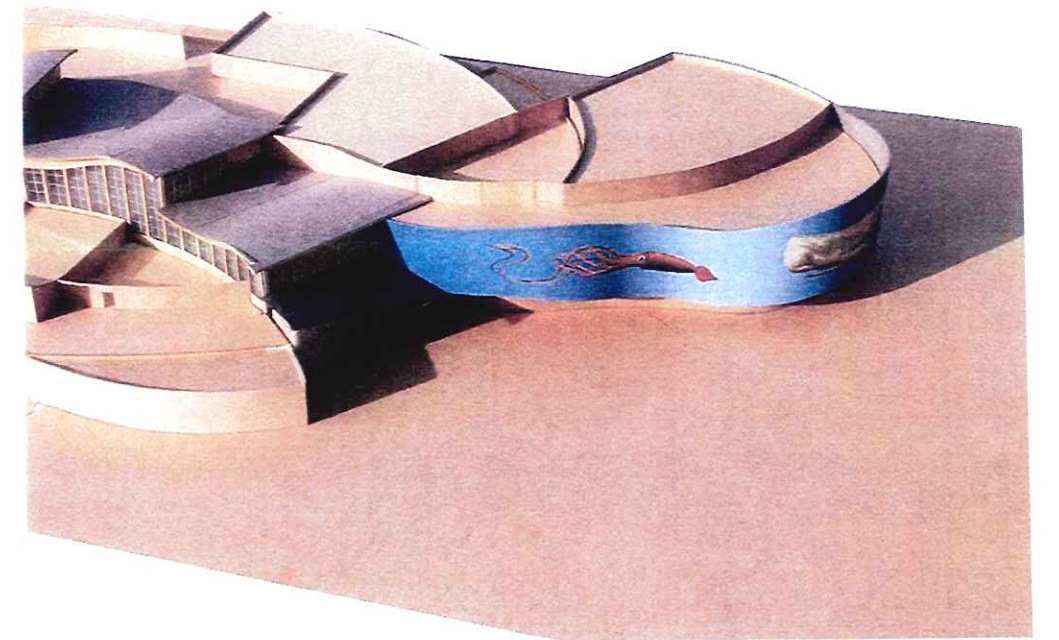
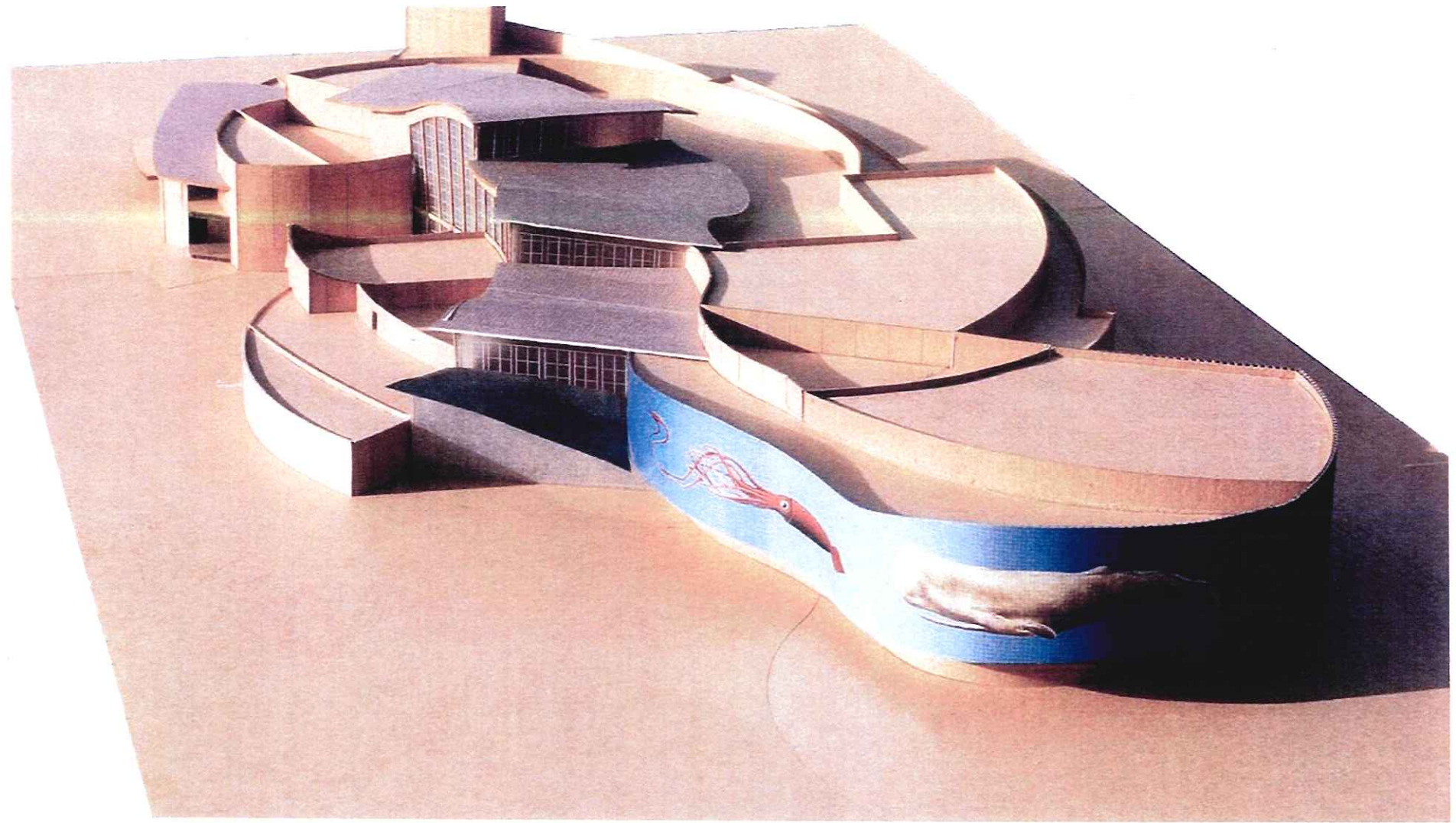

AUPRSACH-POLICE ENGINEER AND ARCHITECT
 PROJECT: AQUARIUM OF THE PACIFIC
 NAME: [REDACTED]
 DATE: AUG 26 09
 DRAWING NO: SK-003
 DRAWN BY: EB
 FOR INFORMATION ONLY


AUPRSACH-POLICE ENGINEER AND ARCHITECT
 PROJECT: AQUARIUM OF THE PACIFIC
 NAME: [REDACTED]
 DATE: AUG 26 09
 DRAWING NO: SK-005
 DRAWN BY: EB
 FOR INFORMATION ONLY

PACIFIC VISIONS SECTIONS



EXISTING SITE

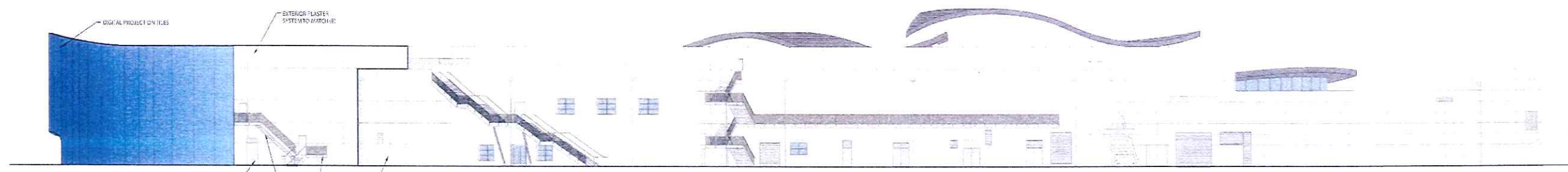


PHOTOS OF MODEL

(E) ROOF HIGH POINT
EL. +74'-6"
(N) ROOF HIGH POINT
EL. +65'-0"

LEVEL 2
EL. +31'-6"

LEVEL 1
EL. +15'-6"

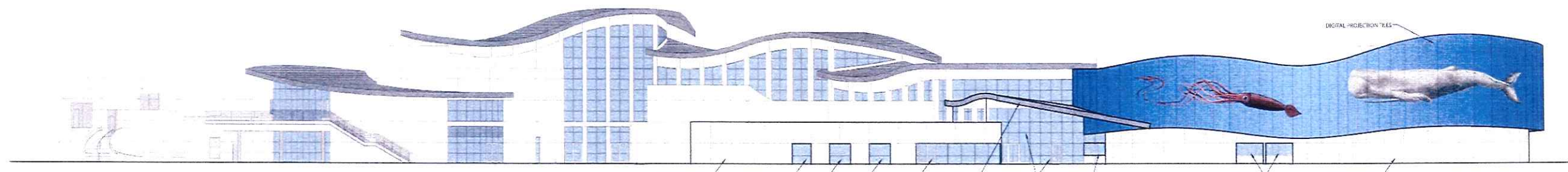


WEST ELEVATION

(E) ROOF HIGH POINT
EL. +74'-6"
(N) ROOF HIGH POINT
EL. +65'-0"

LEVEL 2
EL. +31'-6"

LEVEL 1
EL. +15'-6"

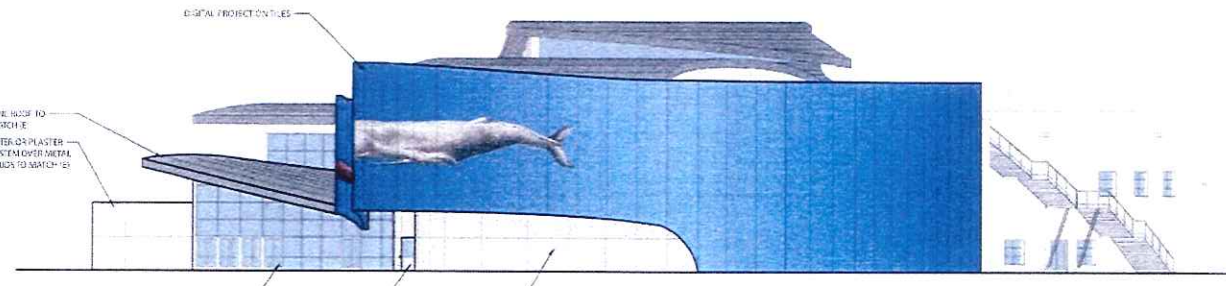


EAST ELEVATION

(E) ROOF HIGH POINT
EL. +74'-6"
(N) ROOF HIGH POINT
EL. +65'-0"

LEVEL 2
EL. +31'-6"

LEVEL 1
EL. +15'-6"

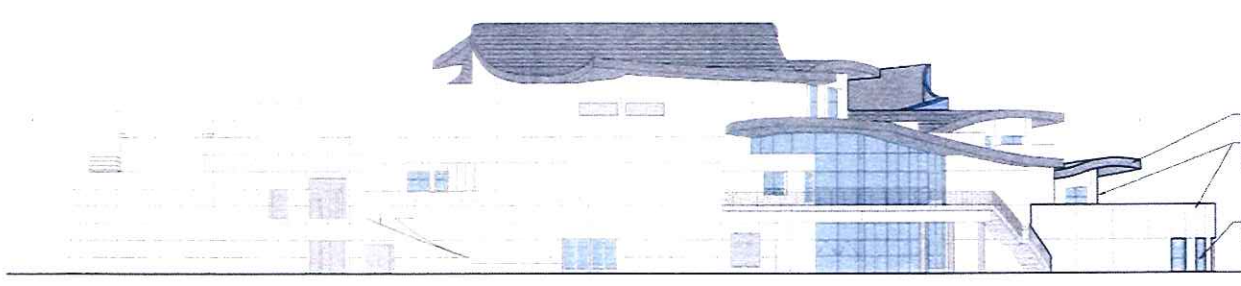


NORTH ELEVATION

(E) ROOF HIGH POINT
EL. +74'-6"
(N) ROOF HIGH POINT
EL. +65'-0"

LEVEL 2
EL. +31'-6"

LEVEL 1
EL. +15'-6"

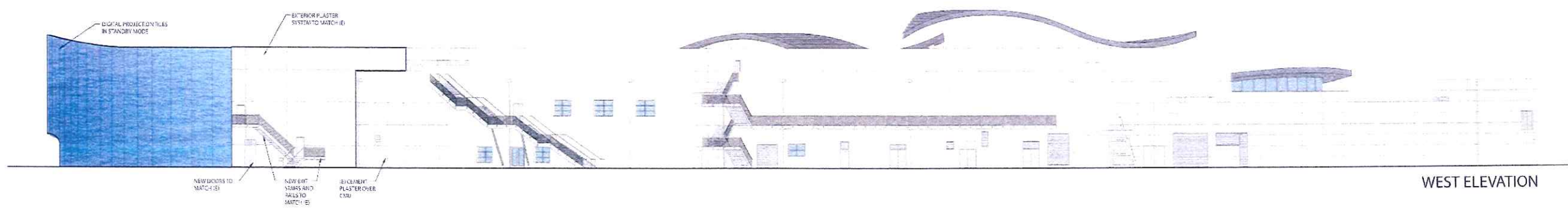


SOUTH ELEVATION

(E) ROOF HIGH POINT
EL. +74'-6"
(N) ROOF HIGH POINT
EL. +65'-0"

LEVEL 2
EL. +31'-6"

LEVEL 1
EL. +15'-6"

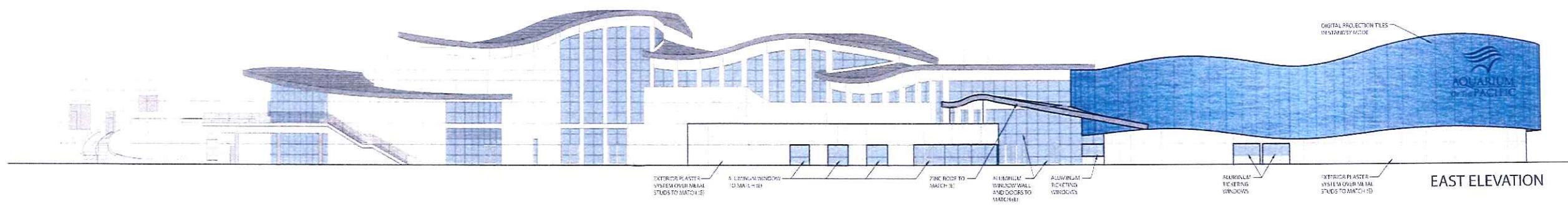


WEST ELEVATION

(E) ROOF HIGH POINT
EL. +74'-6"
(N) ROOF HIGH POINT
EL. +65'-0"

LEVEL 2
EL. +31'-6"

LEVEL 1
EL. +15'-6"

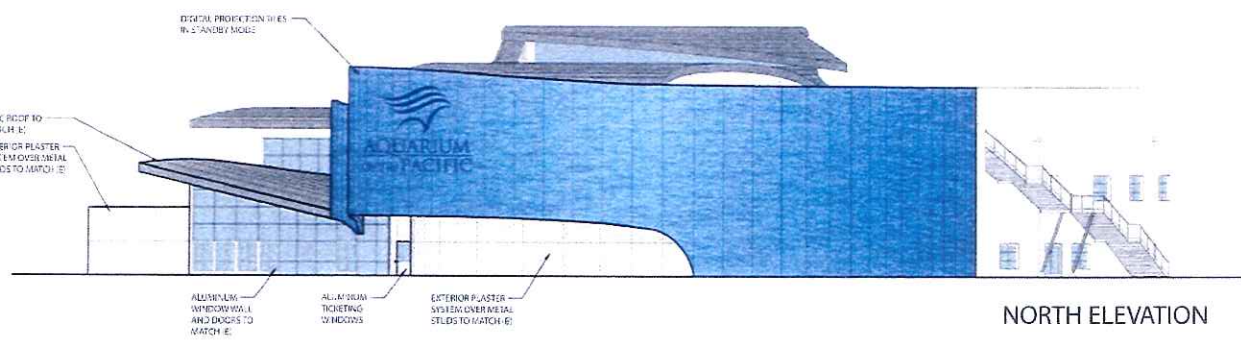


EAST ELEVATION

(E) ROOF HIGH POINT
EL. +74'-6"
(N) ROOF HIGH POINT
EL. +65'-0"

LEVEL 2
EL. +31'-6"

LEVEL 1
EL. +15'-6"

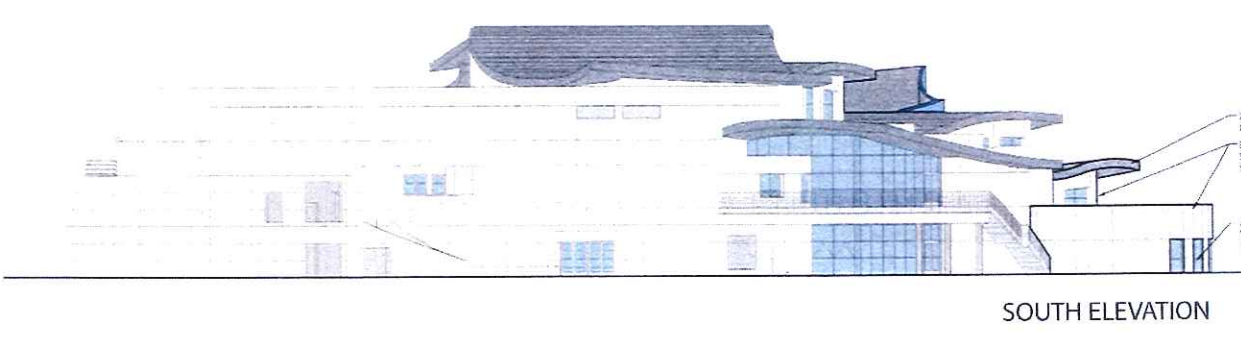


NORTH ELEVATION

(E) ROOF HIGH POINT
EL. +74'-6"
(N) ROOF HIGH POINT
EL. +65'-0"

LEVEL 2
EL. +31'-6"

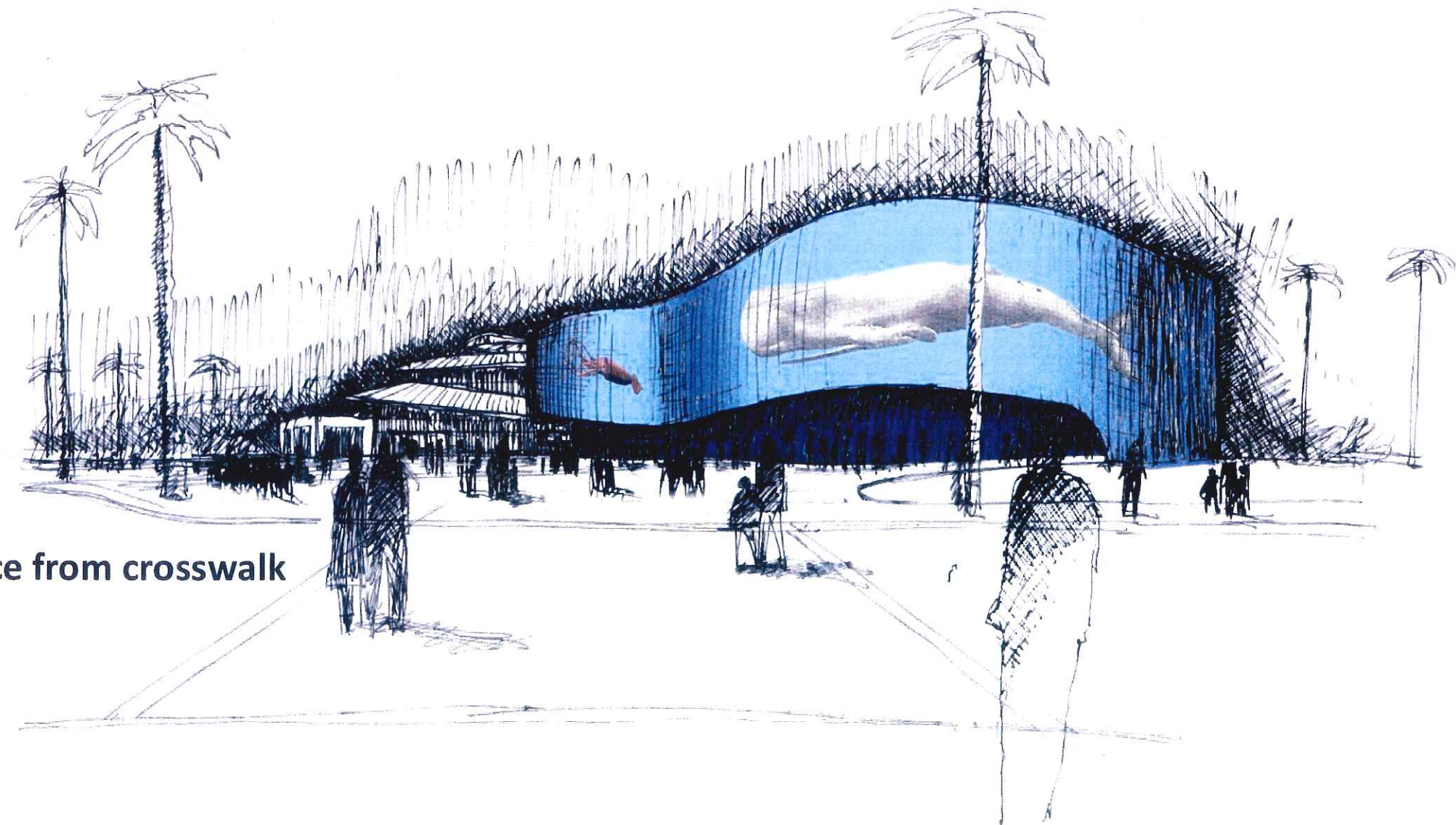
LEVEL 1
EL. +15'-6"



SOUTH ELEVATION

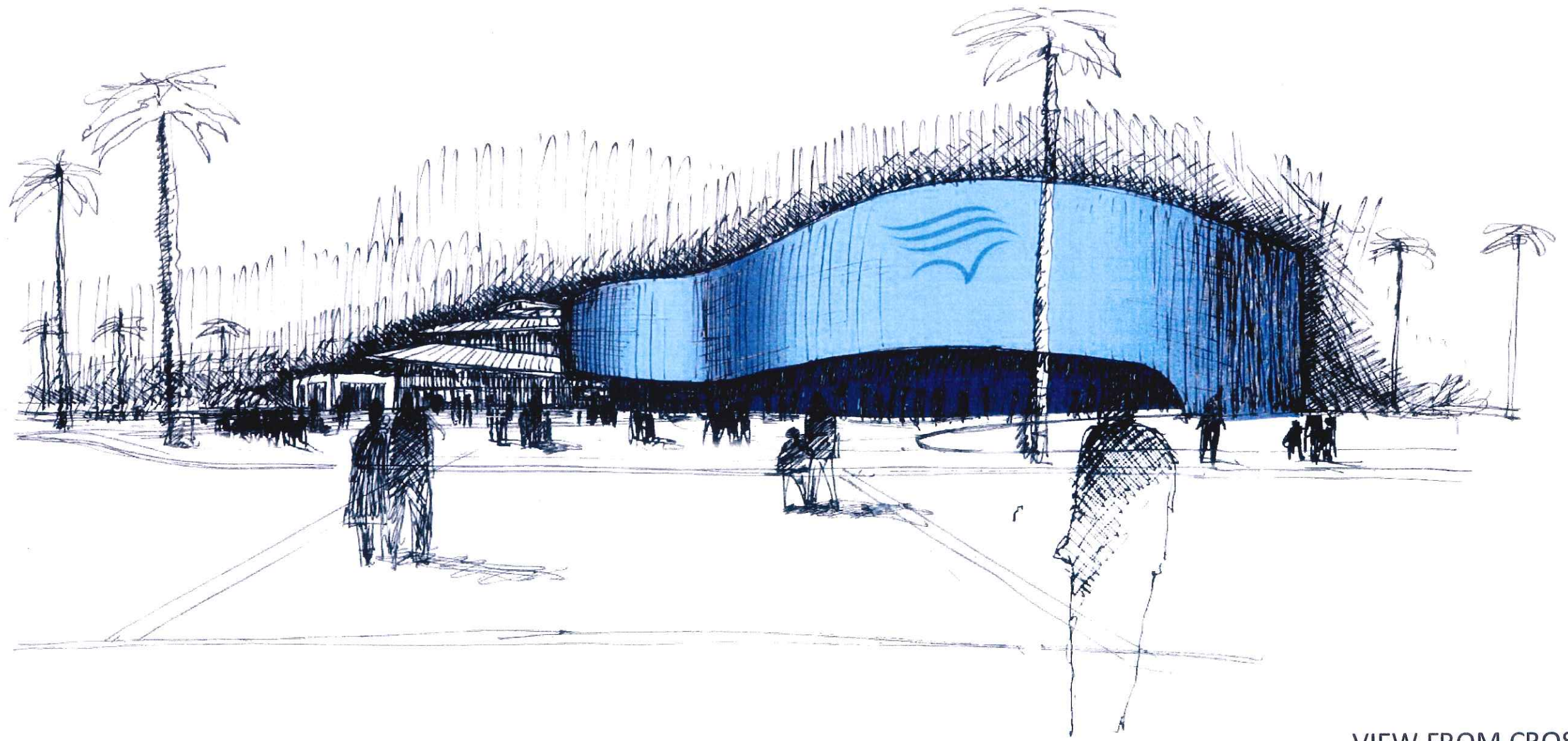


Perspective of existing entrance from crosswalk

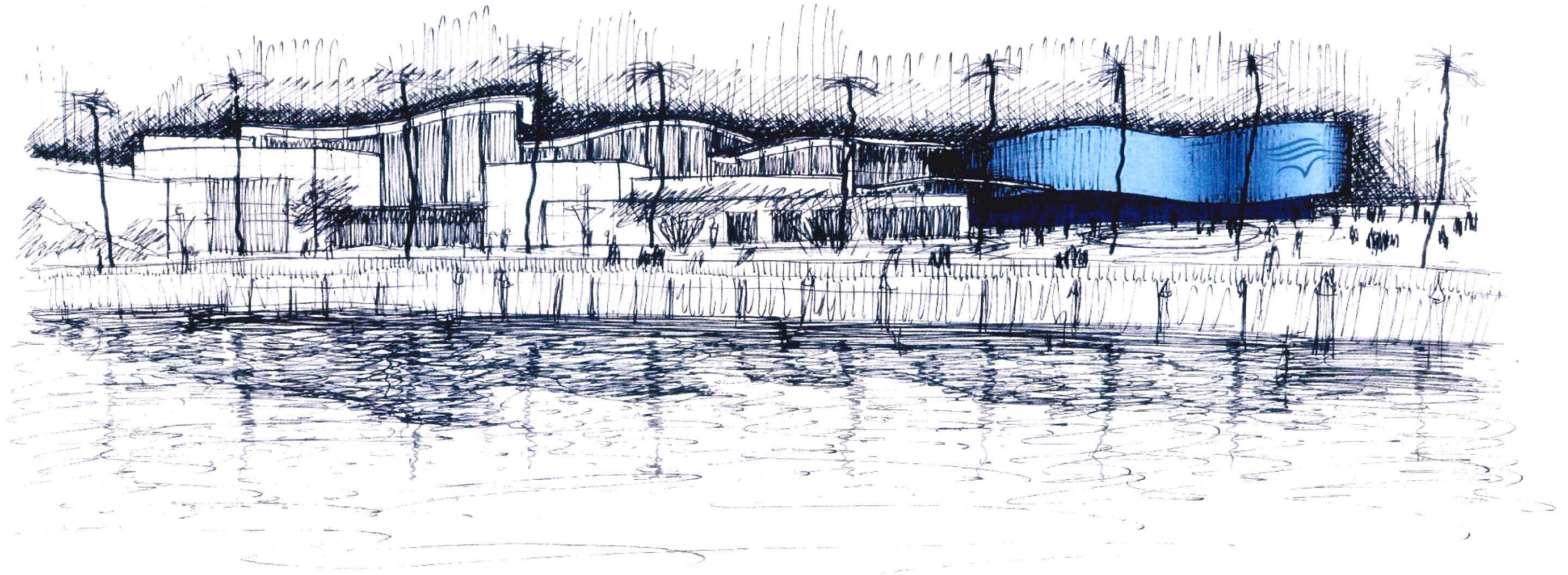


Perspective of new entrance from crosswalk

RENDERINGS



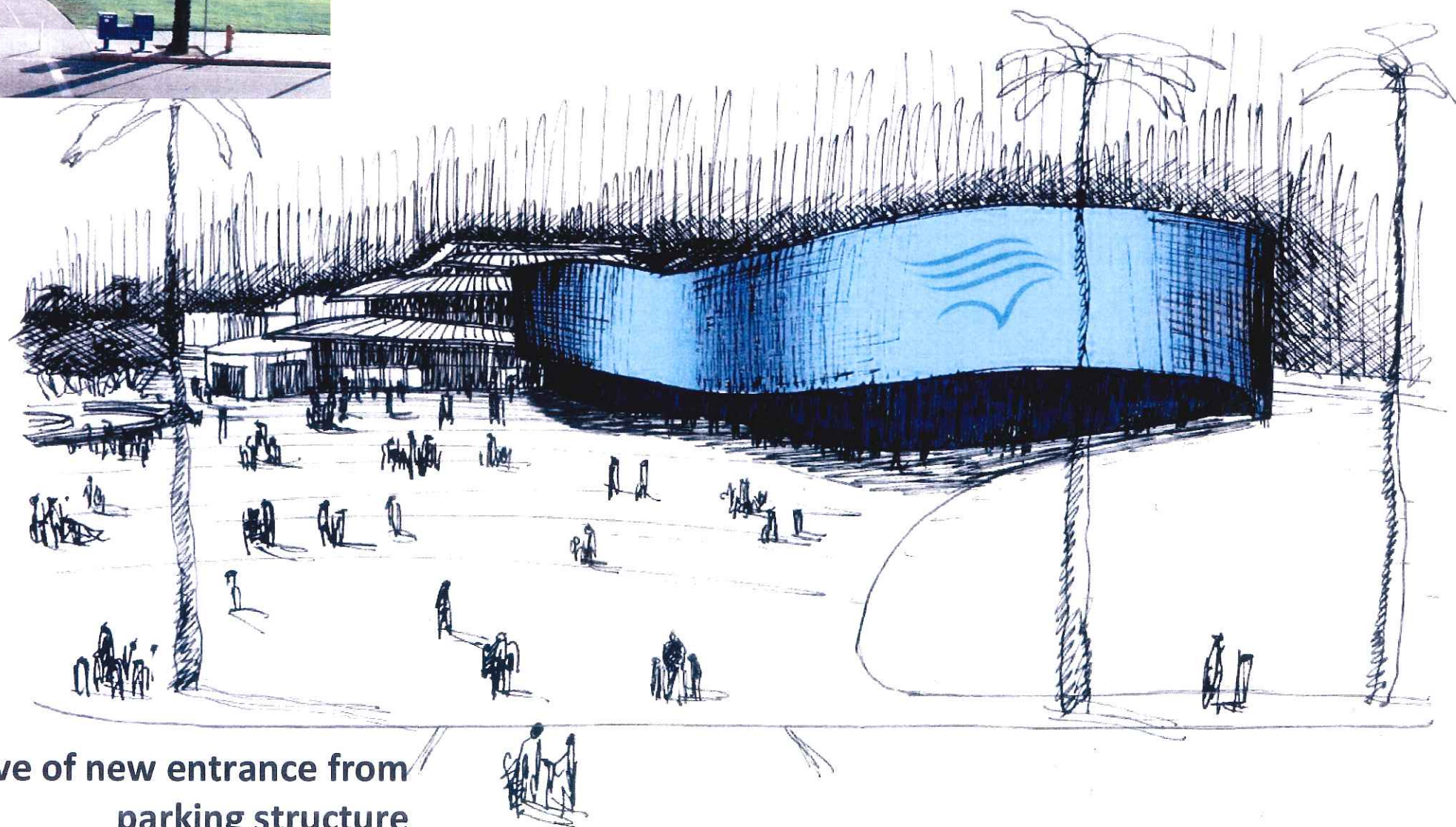
VIEW FROM CROSSWALK



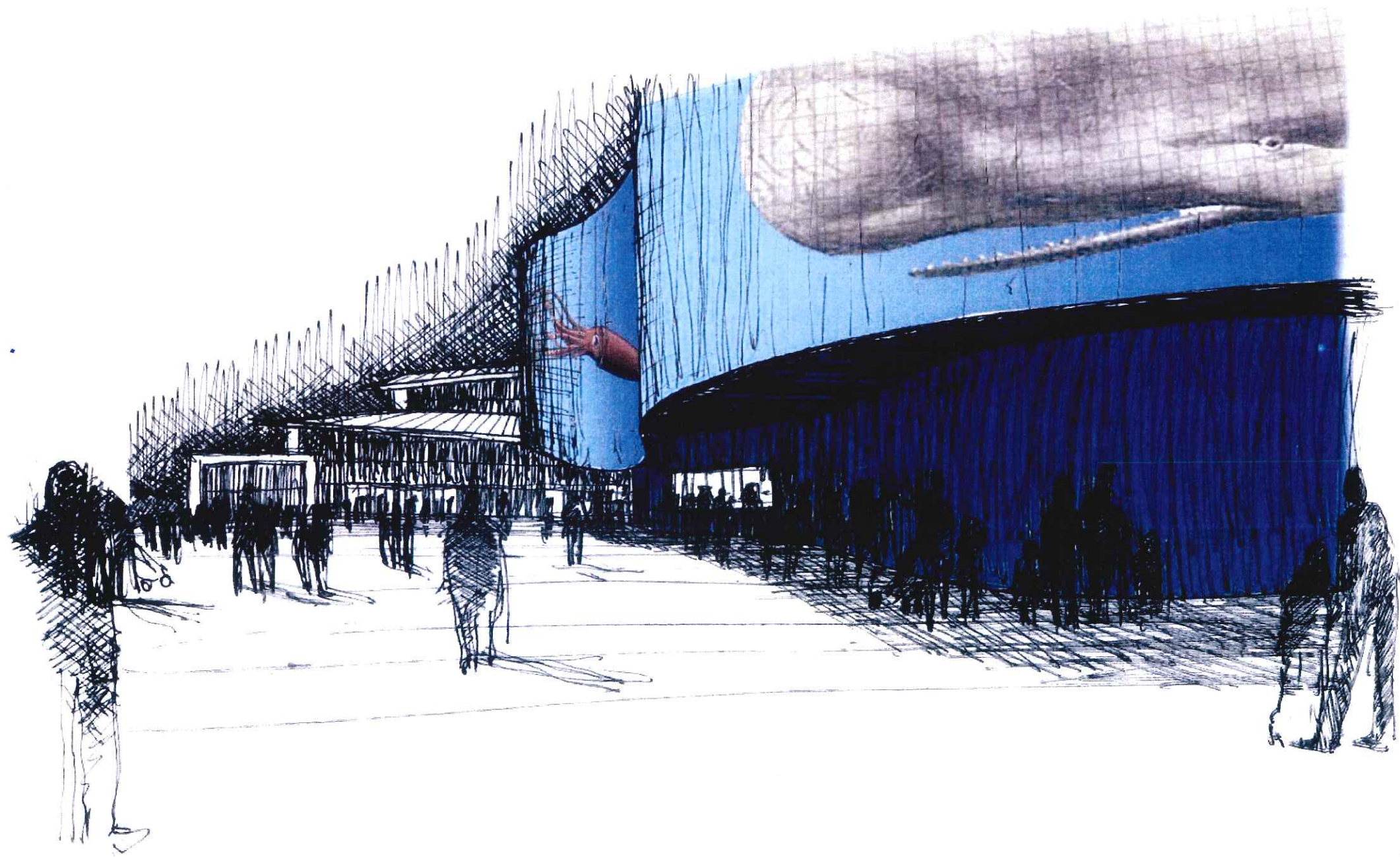
VIEW FROM HARBOR



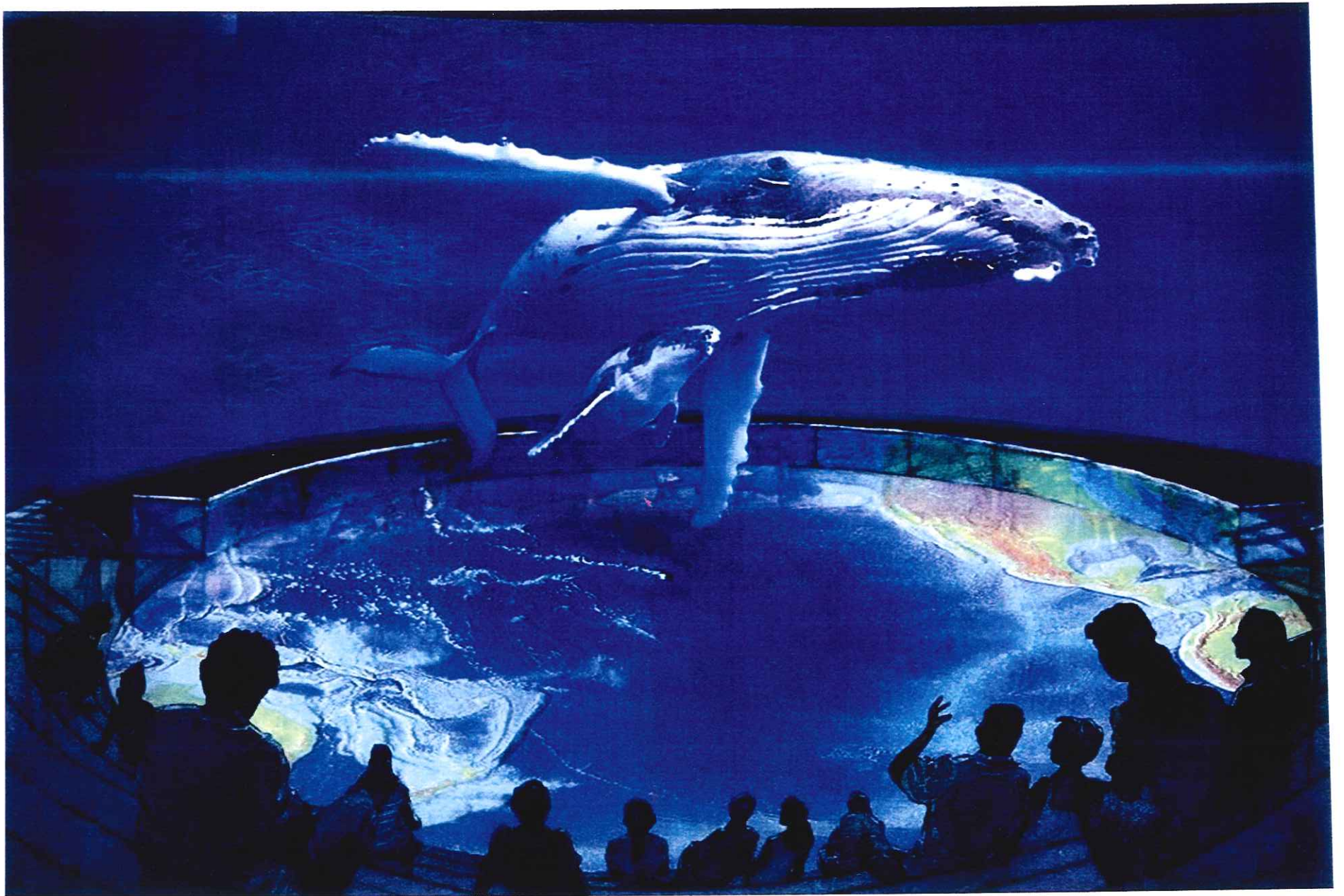
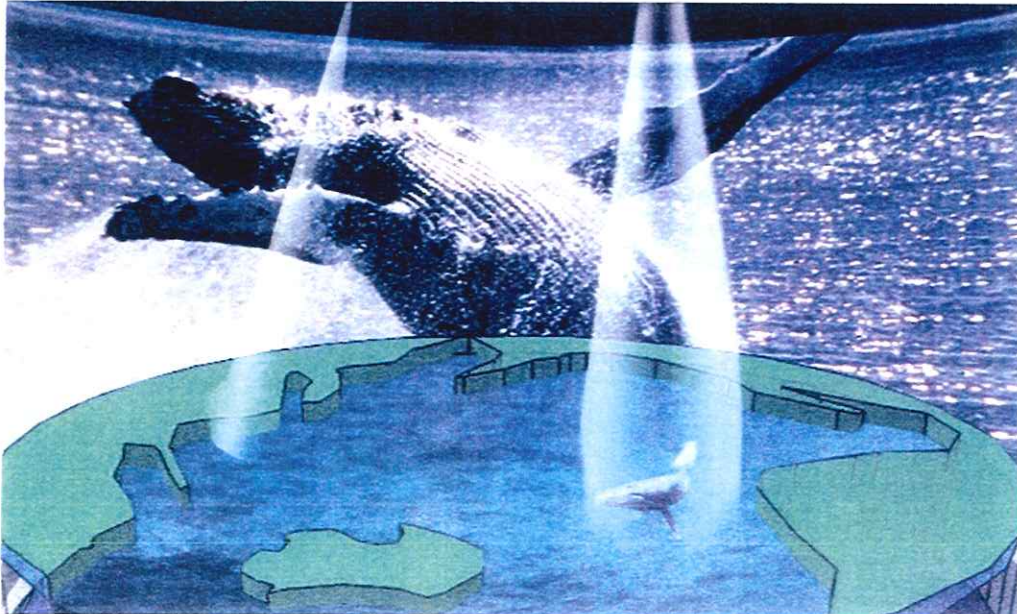
Perspective of existing entrance from parking structure



Perspective of new entrance from parking structure



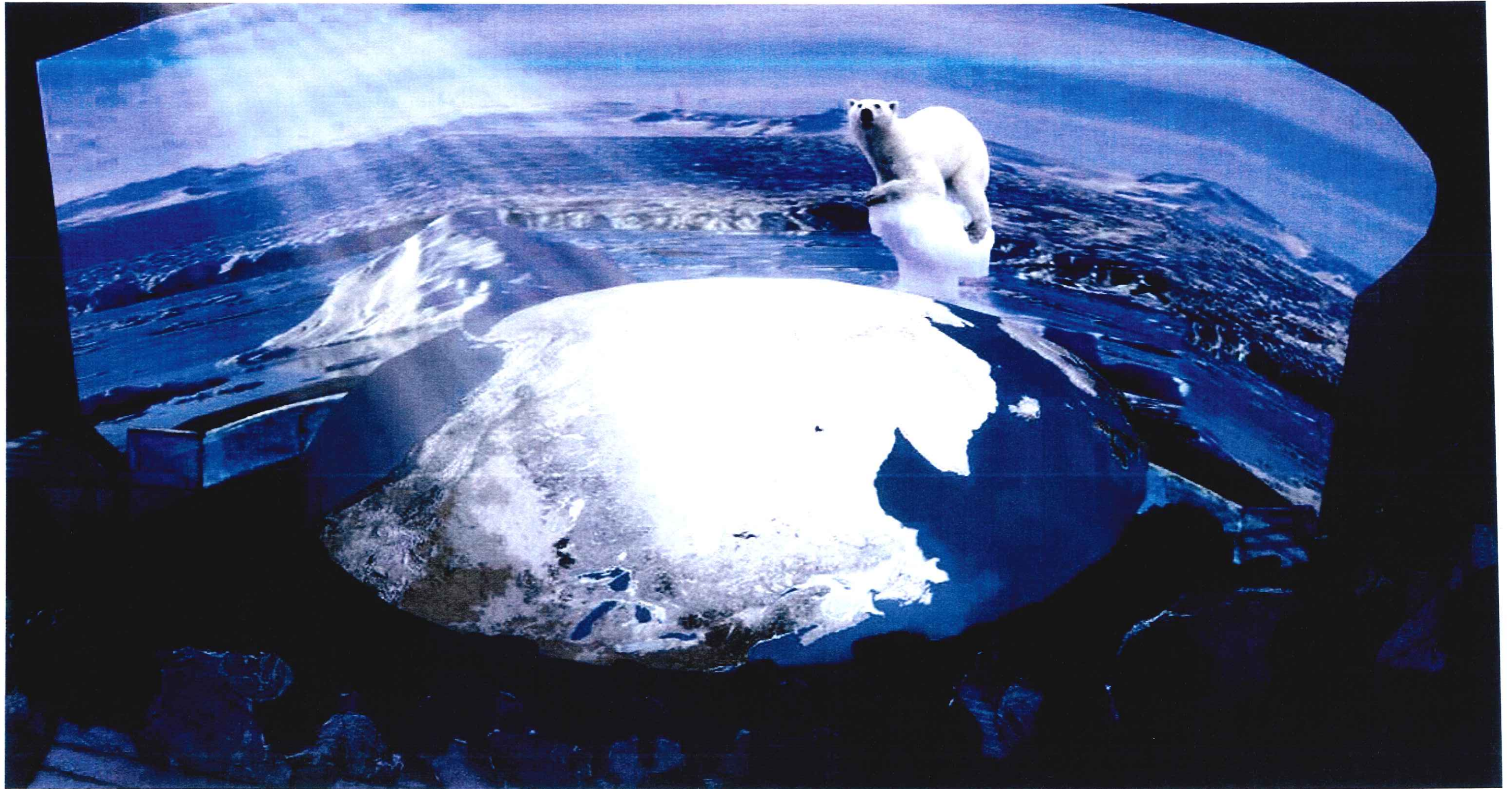
VIEW FROM TICKETING



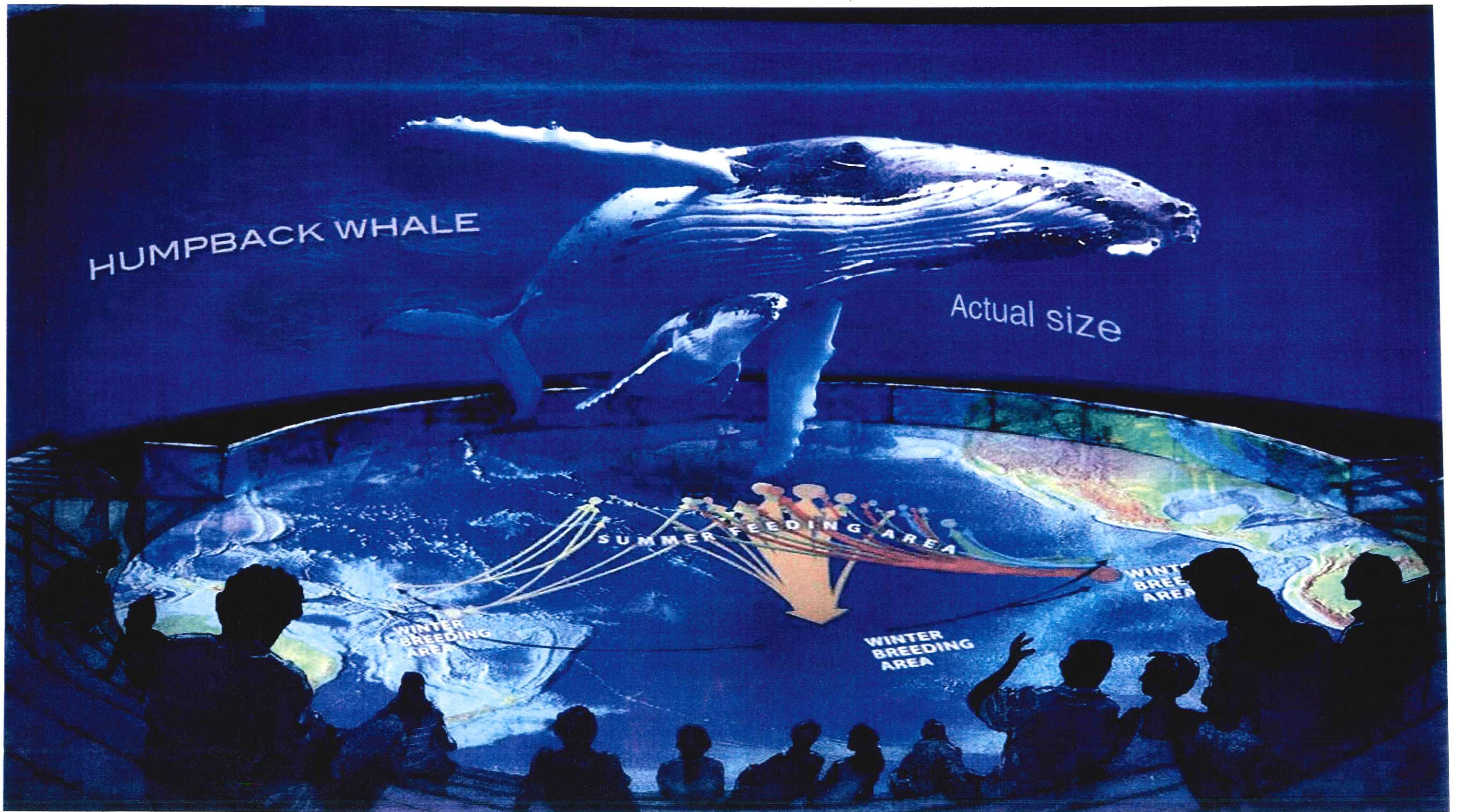
Pacific Visions
(Second Floor)
CONCEPTUAL RENDERINGS



PACIFIC VISIONS



PACIFIC VISIONS



HUMPBACK WHALE

Actual size

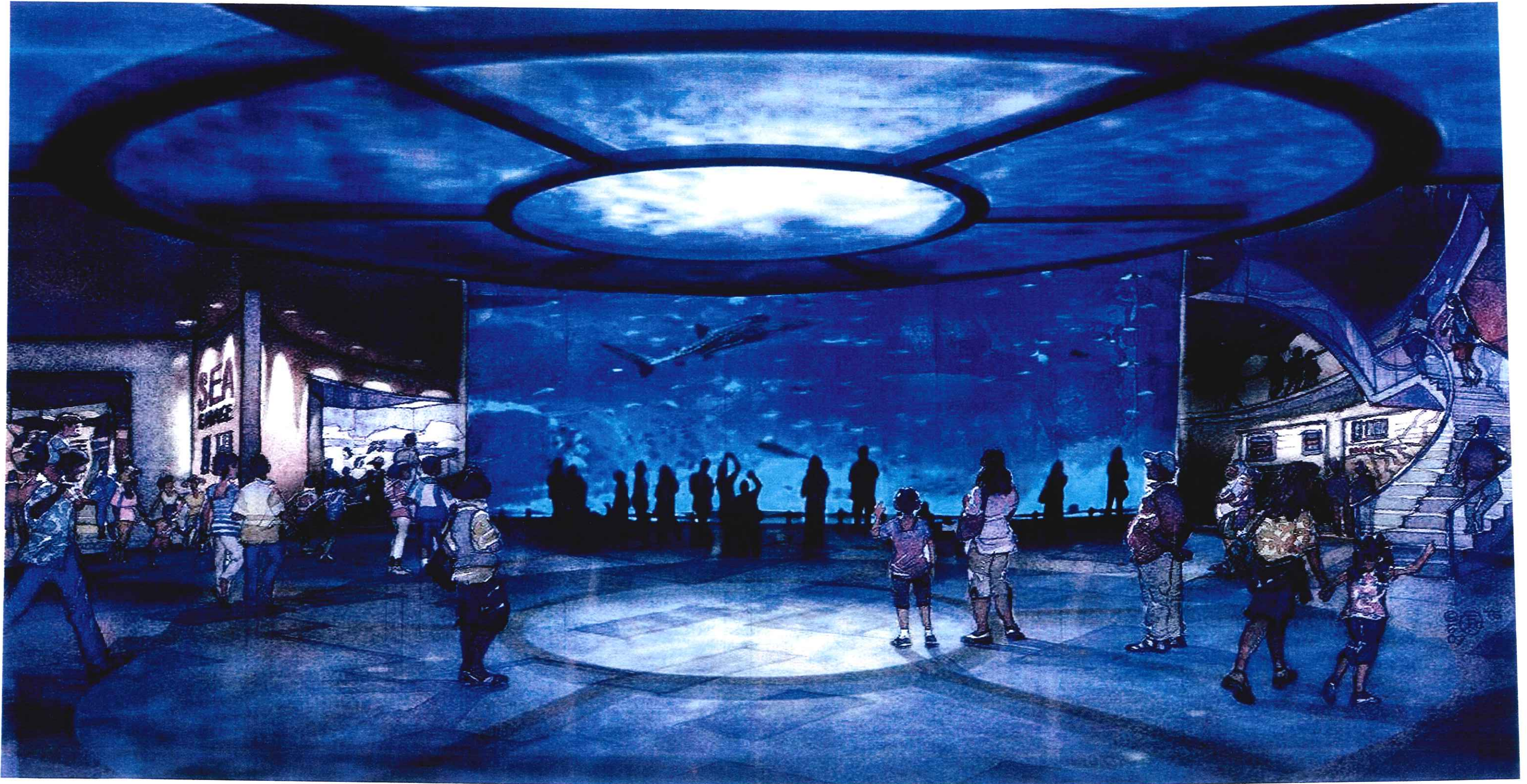
SUMMER FEEDING AREA

WINTER BREEDING AREA

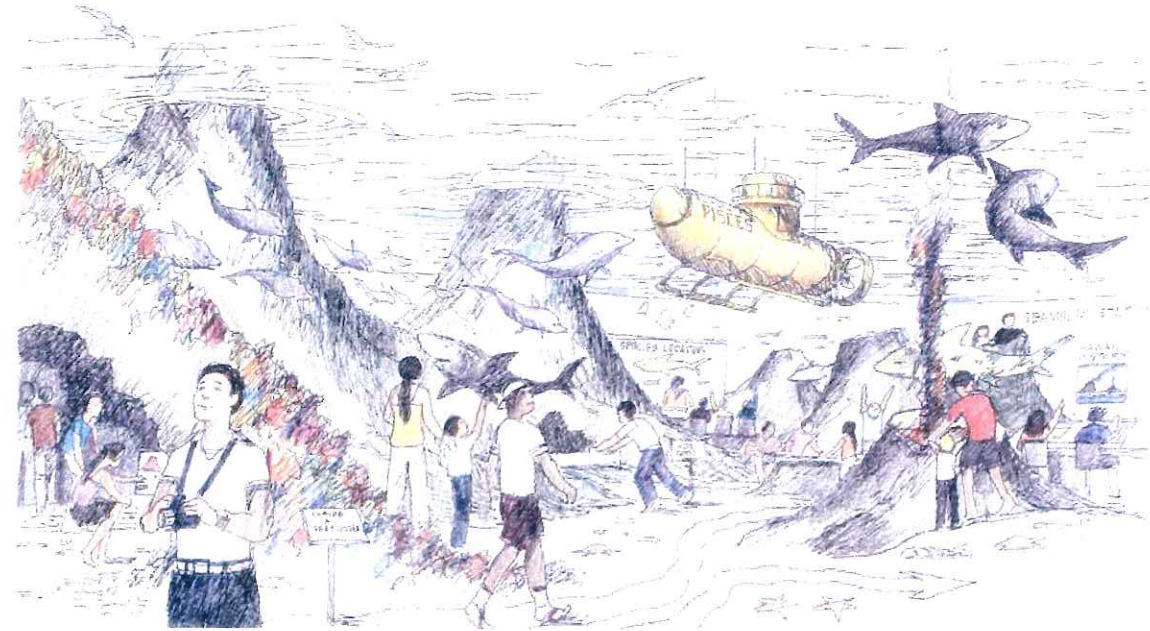
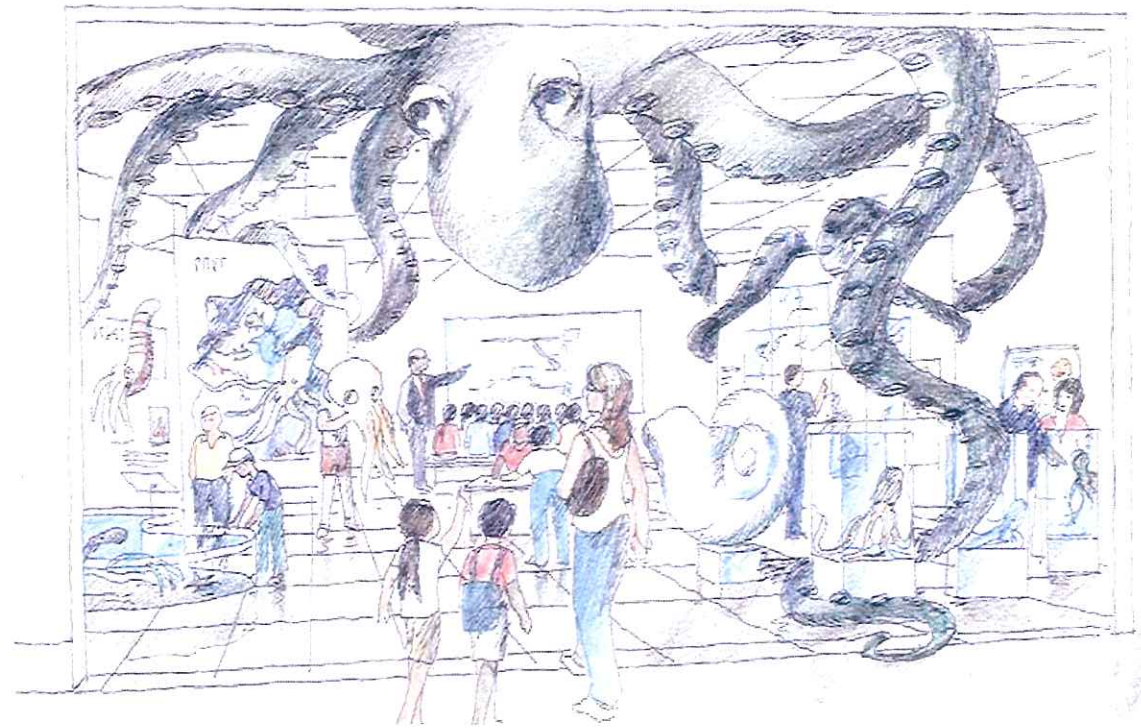
WINTER BREEDING AREA

WINTER BREEDING AREA

PACIFIC VISIONS (3D capabilities)



CULMINATION GALLERY (First Floor)



Expanded Changing Exhibit
(First Floor)
CONCEPTUAL RENDERINGS



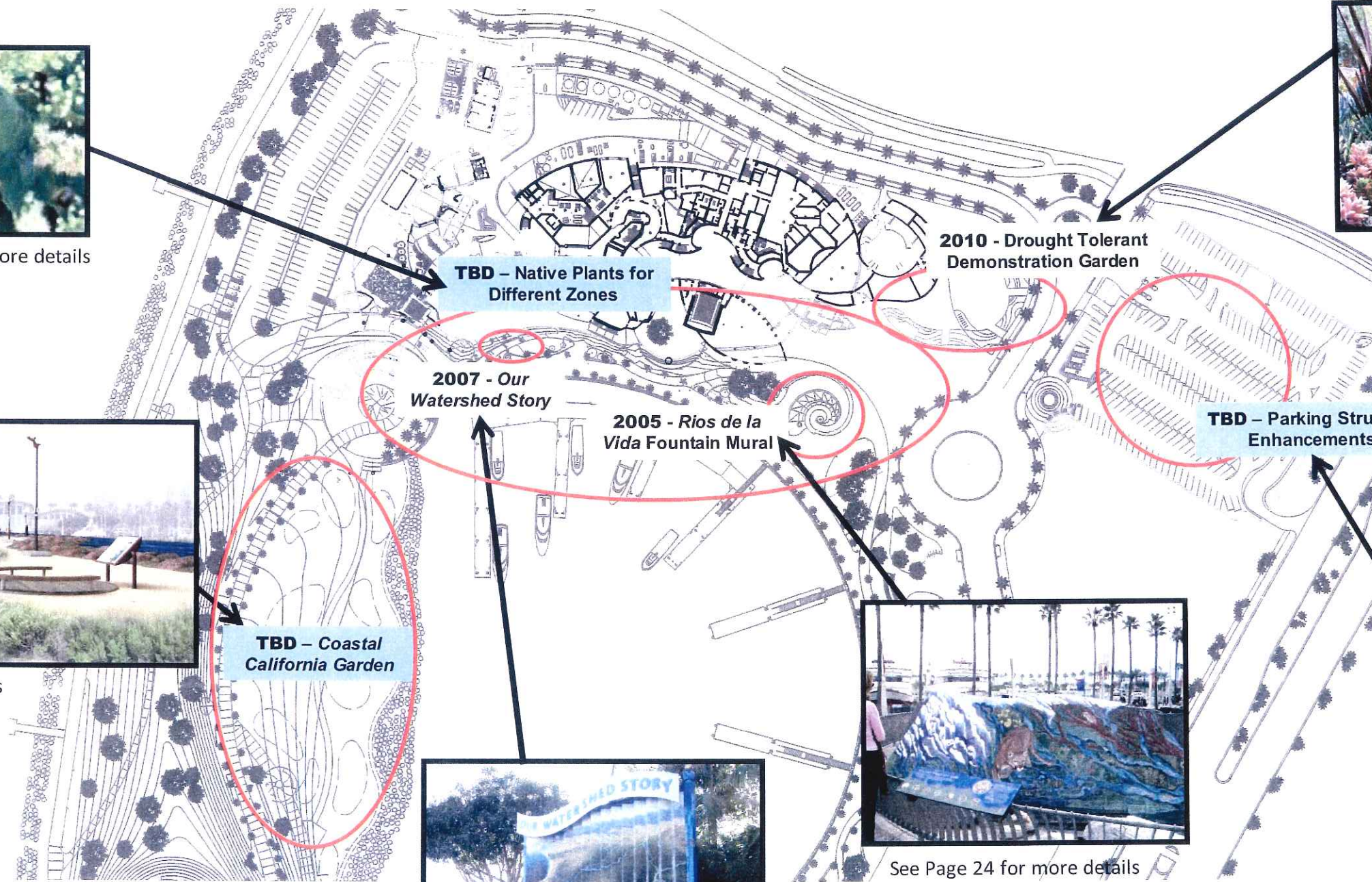
See Page 28 for more details



See Page 26 for more details



See Page 27 for more details



See Page 25 for more details



See Page 24 for more details



See Page 29 for more details

NOTE: The Aquarium is including some project ideas –Coastal California Garden, Native Plants for Different Zones, and Parking Structure Enhancements—developed by the Aquarium for the City of Long Beach to consider. It is the sole responsibility of the City to prioritize, fund, and implement these projects which are on City land and managed by the City's Parks, Recreation, and Marine department.

AQUARIUM EFFORTS TO CONNECT TO WATERFRONT PARK

Aquarium Efforts to Connect to Waterfront Park

RIOS DE LA VIDA MURAL

Status: Completed in February 2005


Funding: Rivers and Mountains Conservancy

Description: The ceramic mosaic mural, which surrounds the City of Long Beach's Wave Fountain, presents a tapestry of images that remind us of our two uniquely urban rivers—the Los Angeles and San Gabriel. The surprising diversity of flora and fauna still found today in and around these rivers is highlighted in this mural. The history and conservation issues surrounding these rivers are explored through interpretive graphics.



Valleys and Foothills

Water from the mountains flows down into basins forming natural ponds and lakes that serve as gathering places for local animals. Man-made dams were created here to collect and contain water for human needs.



California Condor

One of the largest flying birds in North America, the California Condor has a wingspan of over nine feet, and a weight of 23 lbs.

HABITAT Historically these large birds ranged from Baja California, Mexico to British Columbia, Canada. They now reside in limited areas of Southern California, Baja California, and Arizona.

CONSERVATION Hunting, pollution, and other human influences took these animals to the brink of extinction. From only nine condors in the wild in 1985, captive breeding programs have increased their total number to close to 220.





Aquarium Efforts to Connect to Waterfront Park

OUR WATERSHED STORY EXHIBIT

Status: Completed in December 2007

Funding: California Coastal Conservancy and Rivers and Mountains Conservancy

Description: Public exhibit that displays comparative maps illustrating the San Pedro Bay watersheds prior to human settlement and as they are today, heavily developed and home to millions of people.



Aquarium Efforts to Connect to Waterfront Park

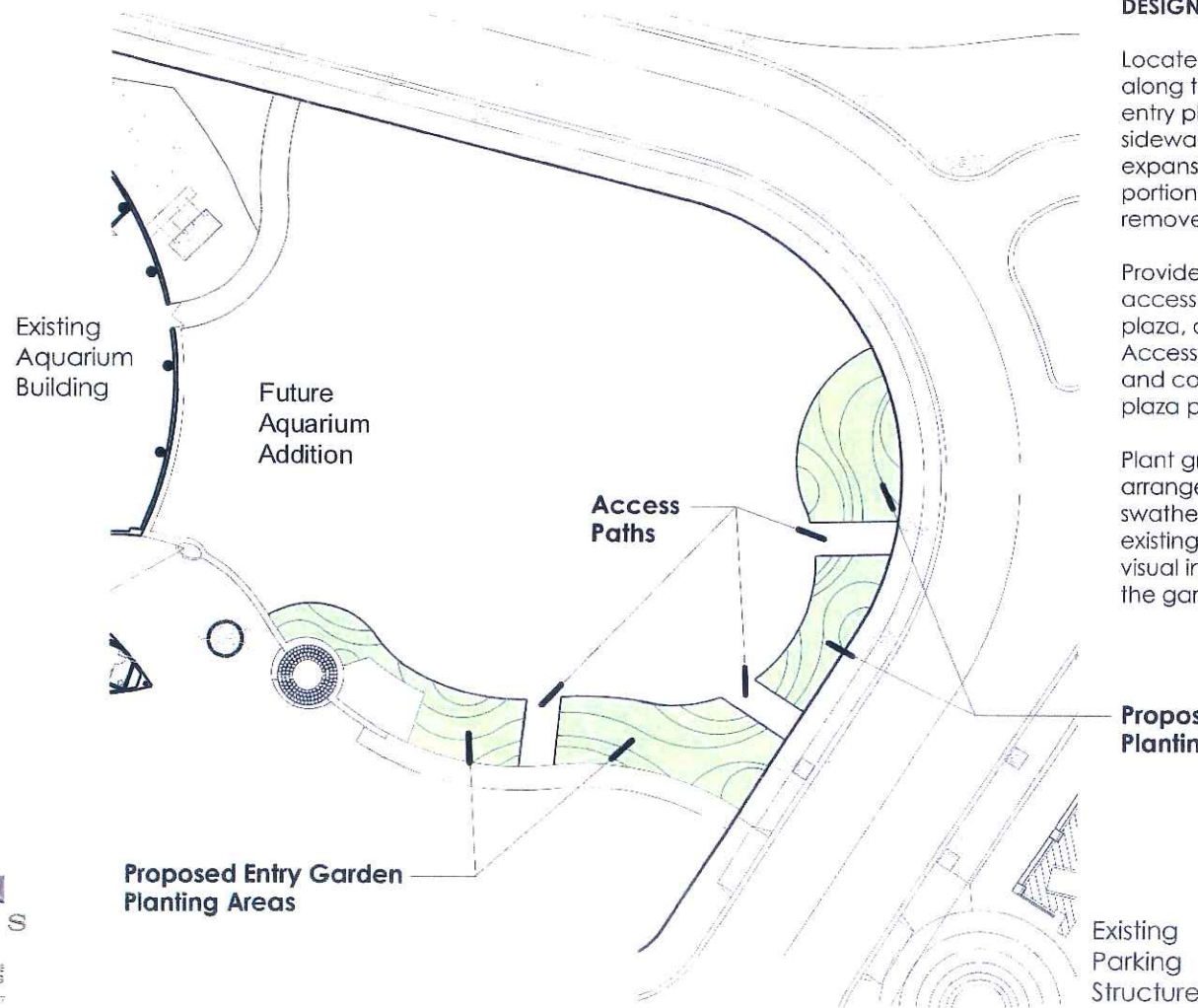
DROUGHT TOLERANT DEMONSTRATION GARDEN

Status: Scheduled to be completed in June 2010

Funding: Bureau of Reclamation

Description: Demonstration garden featuring drought tolerant and California native plants to show to the general public and Aquarium visitors the beauty and water saving capability of easily available drought-resistant plants. The garden and surrounding signage will aim to inspire people to use technologically advanced water conservation techniques showcased and take actions within their homes to reduce their water needs.

Proposed Entry Garden Imagery



DESIGN CONCEPT:

Locate the Entry Garden along the existing edge of the entry plaza and perimeter sidewalk, partially within future expansion area - requiring a portion of the garden to be removed at a future date.

Provide three (3) 10' wide access paths - one from the plaza, one from the sidewalk. Access paths to be permeable and compliment the existing plaza paving.

Plant groupings to be arranged in informal curved swathes, complimenting existing forms and providing visual interest from all sides of the garden.

Proposed Entry Garden Planting Areas



SP1



SP2



SP3



SP4



SP5



SP6



SP7



SP8



SP9



SP10

Botanic Name	Common Name	Bloom Time/Color	Foliage Color	Height / Width	Origin
SHRUBS/PERENNIALS					
SP1 Achillea millefolium hybrids	Common Yarrow	Summer to Early Fall / Pink to Red	Green/Grey-Green	2'-3' / spreading	Europe/West Asia
SP2 Arctostaphylos edmundsii 'Carmel Sur'	Carmel Sur Manzanita	Late Winter to Early Spring / Light Pink	Grey-Green	6" / 3'-5'	California
SP3 Arctostaphylos 'Emerald Carpet'	Emerald Carpet Manzanita	Late Winter to Early Spring / Light Pink	Green	12" / 3'-5'	Calif. Hybrid
SP4 Artemisia 'Powis Castle'	Powis Castle Sagebrush	Late Summer to Early Fall / Inconspic.	Silvery Grey	2'-3' / 4'-5'	Europe Hybrid
SP5 Ceanothus griseus horiz. 'Yankee Point'	Yankee Point Ceanothus	Spring / Medium Blue	Glossy Dark Green	2'-3' / 8'-10'	Calif. Hybrid
SP6 Cistus 'Sunset'	Sunset Ceanothus	Spring to Early Summer / Dk Magenta Pink	Green-Grey	2' / 6'-8'	Mediterranean Hybrid
SP7 Lantana 'Confetti'	Confetti Lantana	All year / Mix of Yellow, Pink & Purple	Green	2'-3' / 6'-8'	Cent./So. Amer. Hybrid
SP8 Lantana 'Dwarf White'	White Lantana	All year / White	Green	2'-4' / 3'-4'	Cent./So. Amer. Hybrid
SP9 Lantana 'New Gold'	Golden Yellow Lantana	All year / Golden Yellow	Green	2'-3' / 6'-8'	Cent./So. Amer. Hybrid
SP10 Lantana 'Spreading Sunset'	Orange Lantana	All year / Vivid Orange Red	Green	2'-3' / 6'-8'	Cent./So. Amer. Hybrid



Aquarium Efforts to Connect to Waterfront Park

COASTAL CALIFORNIA GARDEN

Status: Design provided to the City of Long Beach, Department of Parks, Recreation, and Marine in November 2005

Funding: To be prioritized, funded, and implemented by the City

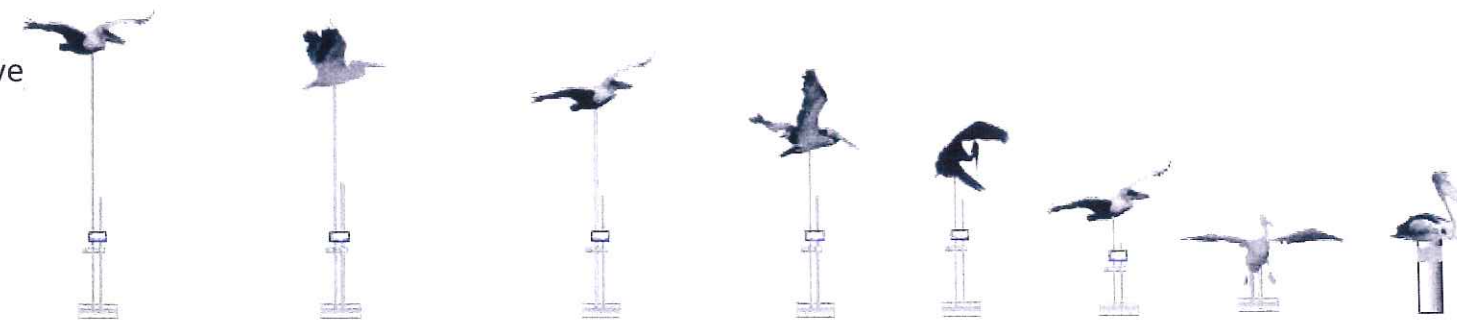
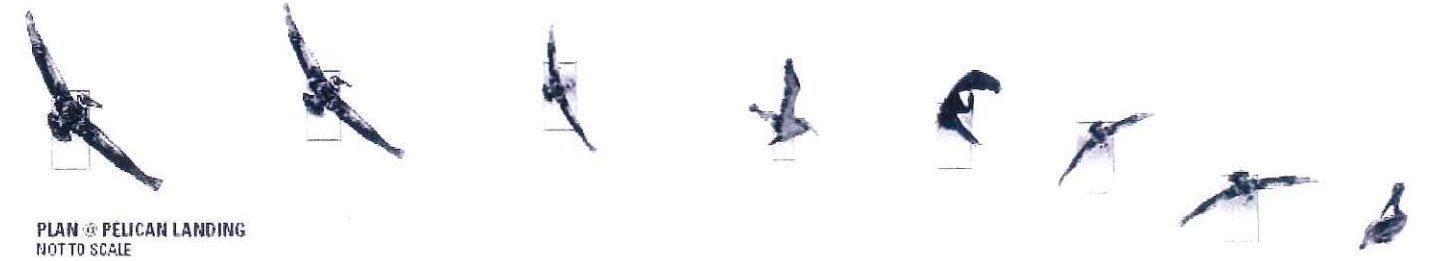
Description: Aquarium, Department of Parks, Recreation & Marine, and Cal State Long Beach developed schematic plans to redesign the dune area of Lighthouse Park. The area was designed to provide visitors with an introduction to coastal animals and plants, provide active and passive learning experiences for visitors of all ages, and create an environment that becomes a destination point.



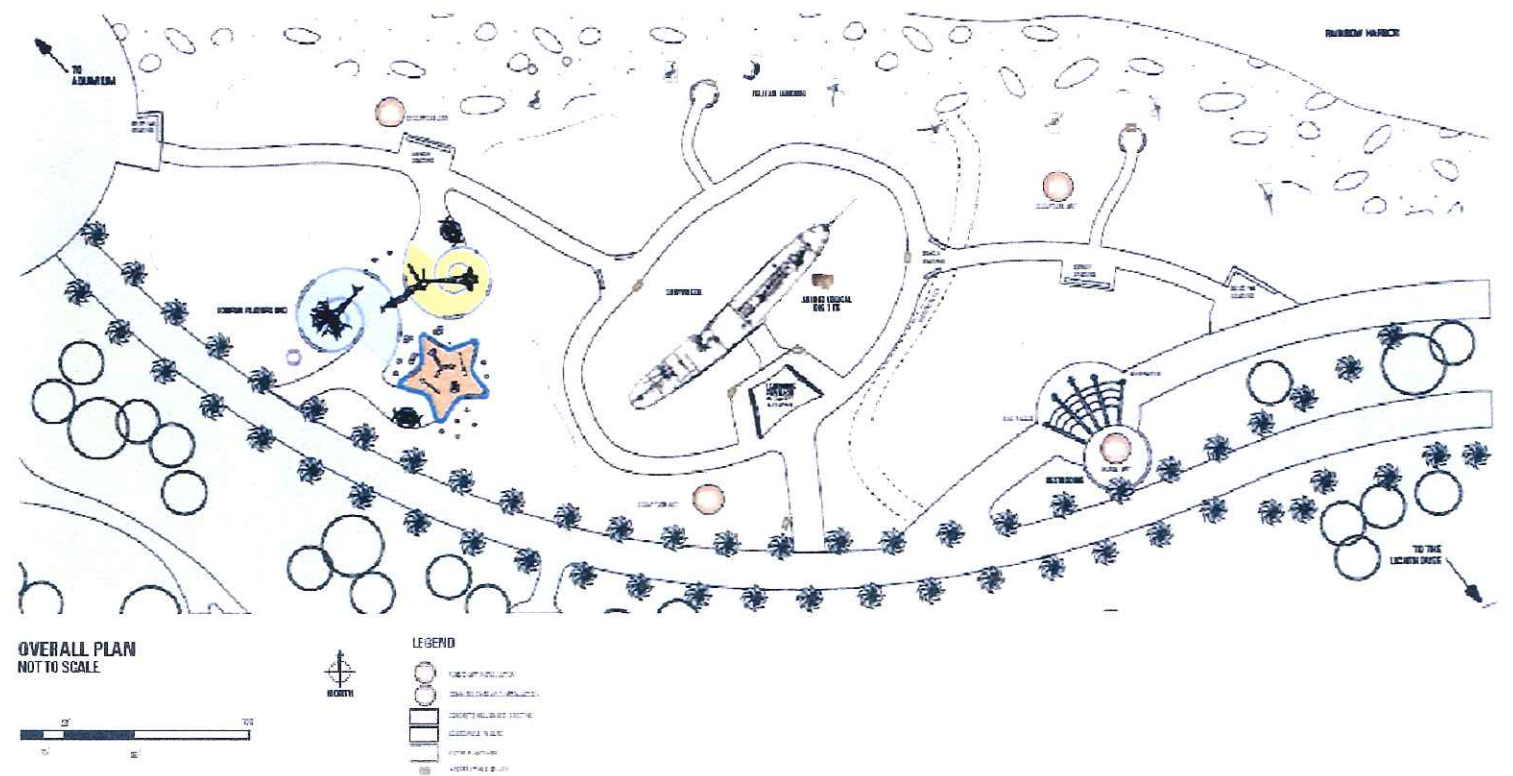
VIEW OF PELICAN SCULPTURE, PUBLIC SEATING, & INTERPRETIVE SIGNAGE



VIEW OF RESTROOMS & INTERPRETIVE SIGNAGE



ELEVATION @ PELICAN LANDING
NOT TO SCALE



OVERALL PLAN
NOT TO SCALE

LEGEND

- TREE (PICOLO)
- SHRUB (LANTANA)
- CACTUS (SAGUARO)
- PALM TREE
- OTHER PLANT
- WATER FEATURE

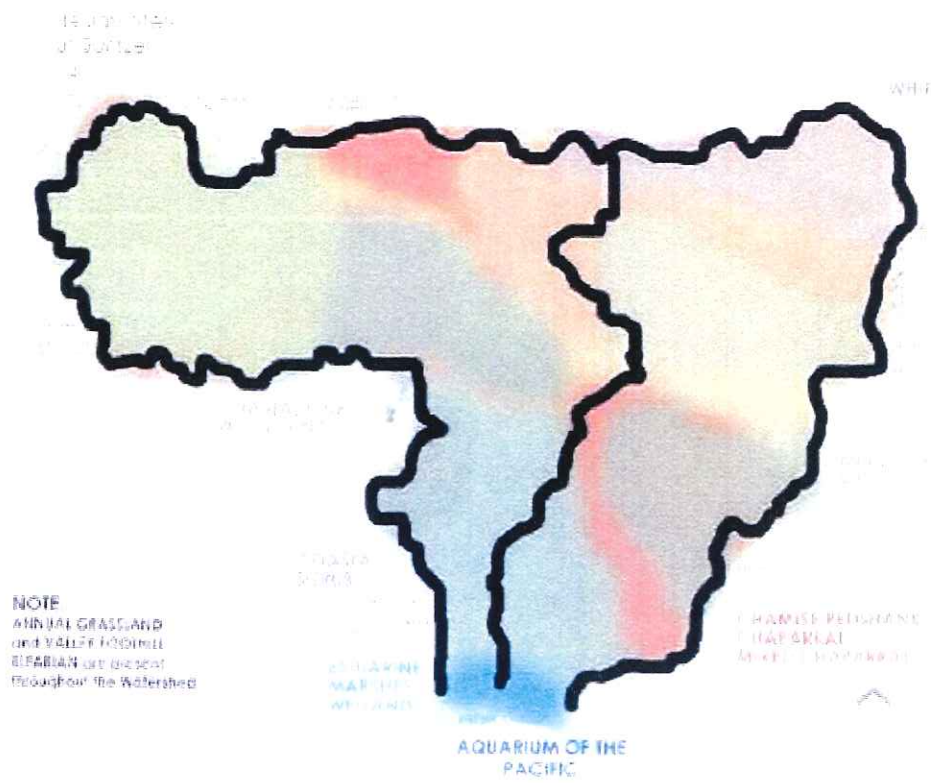
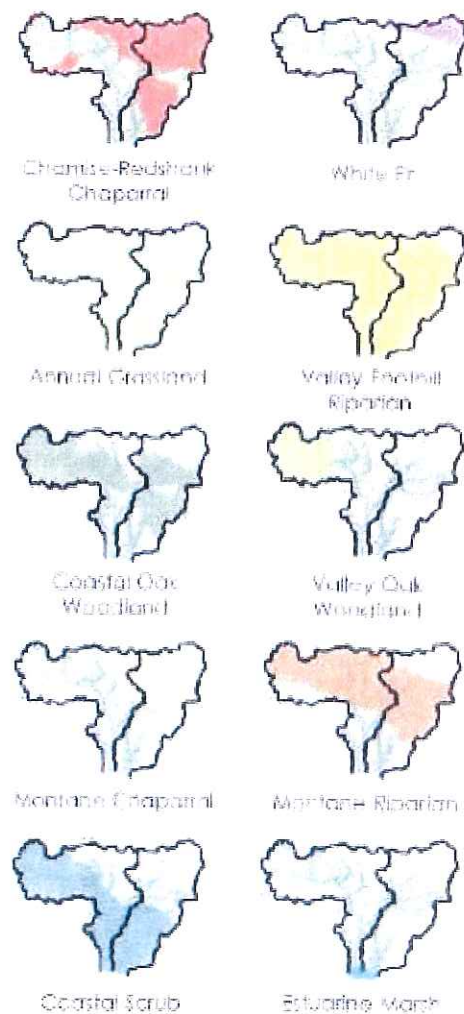
Aquarium Efforts to Connect to Waterfront Park

OUR WATERSHEDS: NATIVE GARDEN FOR DIFFERENT ZONES

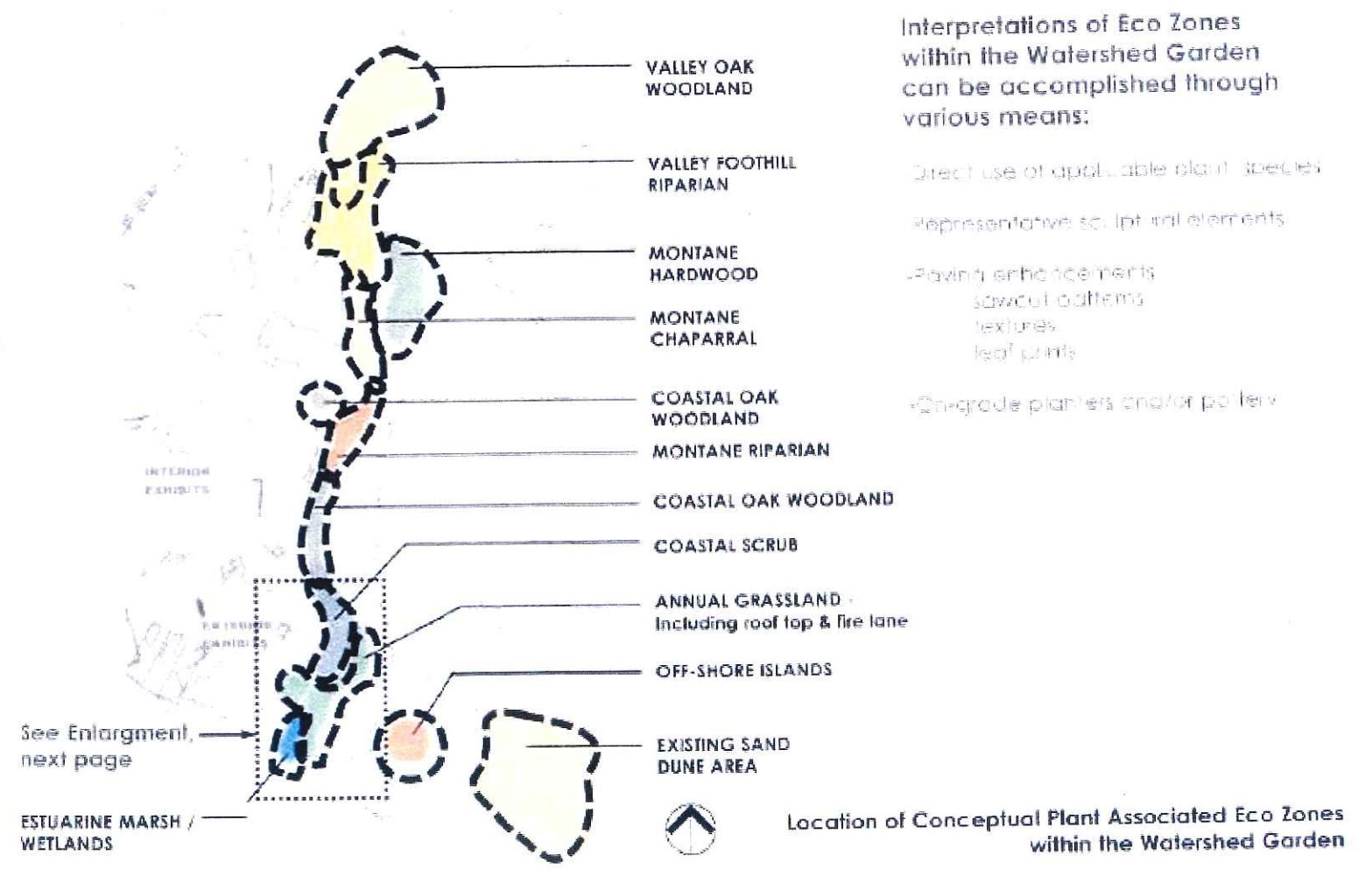
Status: Design provided to the City of Long Beach, Department of Parks, Recreation, and Marine in 2005

Funding: To be prioritized, funded, and implemented by the City

Description: Arrange plant species to reflect the mosaic of habitats present within our local watersheds. The habitat zones are arranged in such a way as to allow a visitor to experience a virtual 'trip' along the watershed as they move from the parking structure ('the mountains') down to the Aquarium's watershed exhibit ('the sea'). The landscape along the waterfront becomes a journey along the Los Angeles and San Gabriel Rivers watersheds.



Collage of Plant Associated Wildlife Habitats within the Los Angeles & San Gabriel River Watersheds



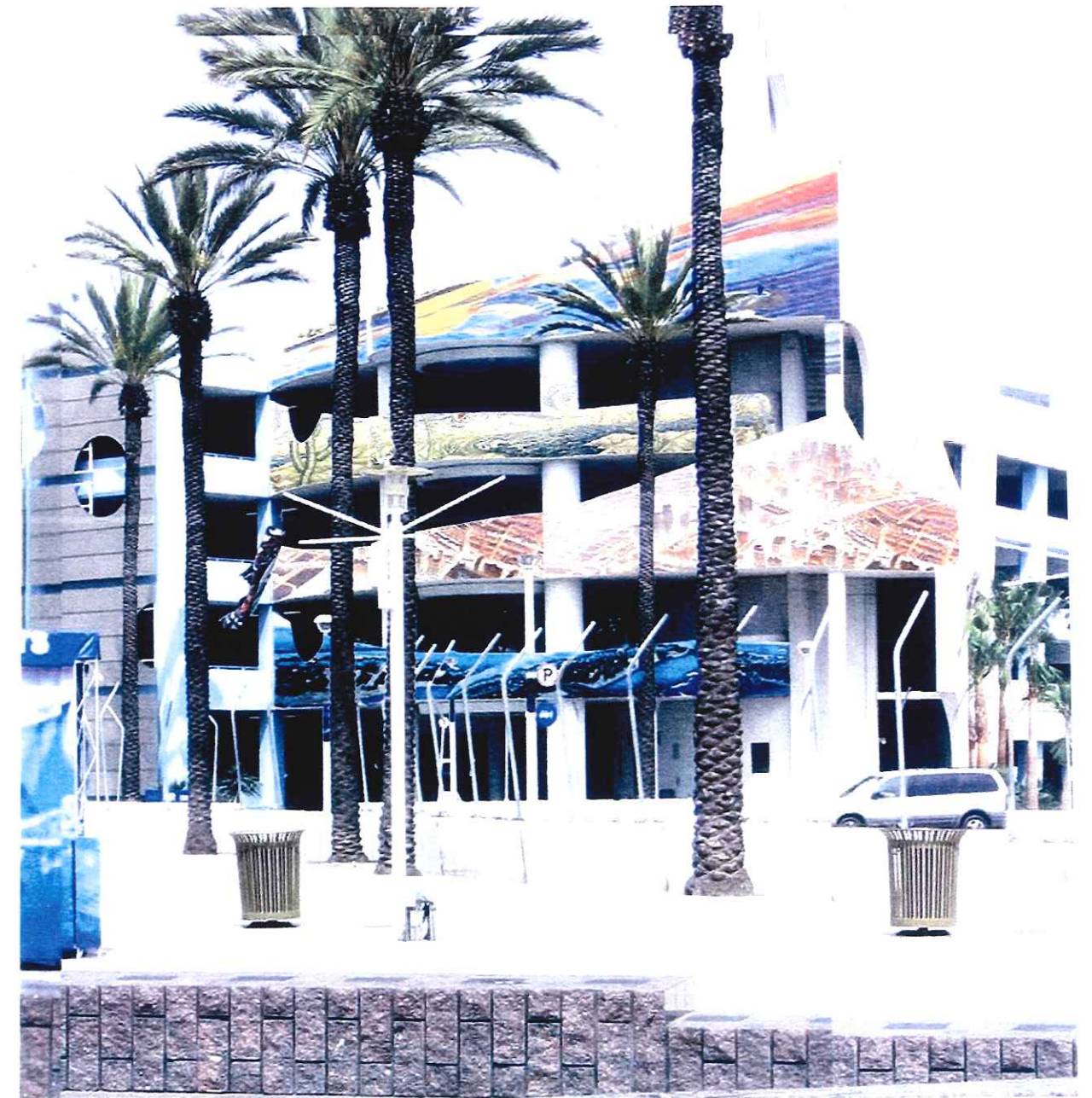
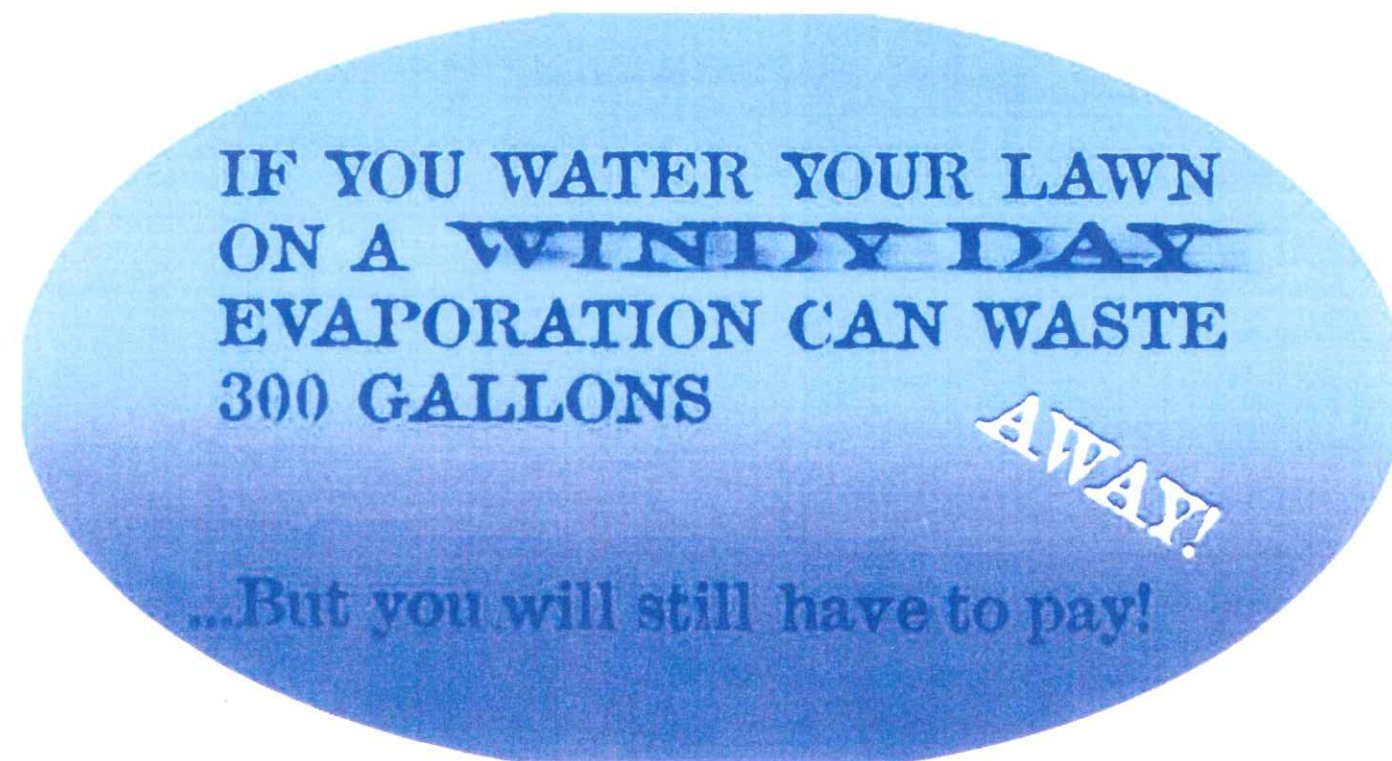
Aquarium Efforts to Connect to Waterfront Park

PARKING STRUCTURE ENHANCMENTS

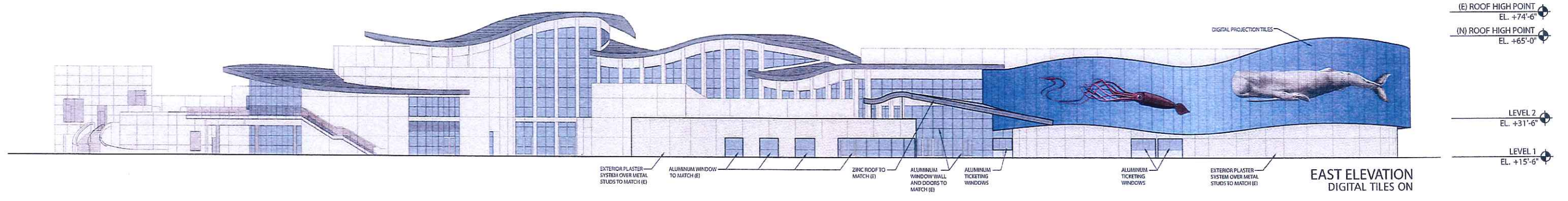
Status: Design provided to the City of Long Beach, Department of Parks, Recreation, and Marine in 2005

Funding: To be prioritized, funded, and implemented by the City

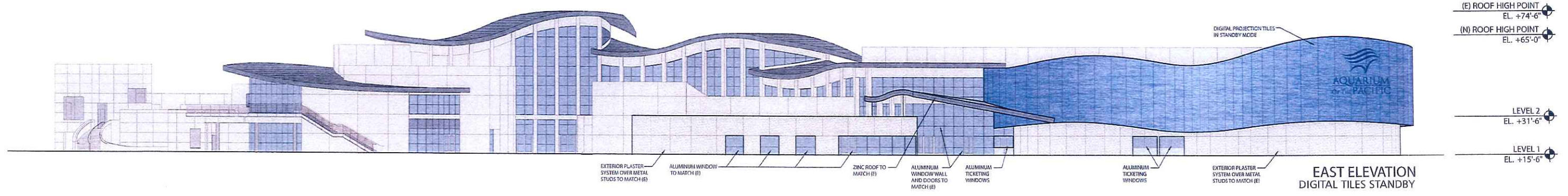
Description: Expand upon the watershed mural installed on the plaza fountain to include the design and installation of elements on the City's parking structure to promote awareness about our local watersheds and stewardship for our habitat and ecosystems. Elements include 'fact bubbles' throughout the interior of the building and relevant artwork on the exterior of the building. Guests will be able to start and end the Aquarium experience with essential education messages about how to maintain and improve their habitat, learn about the social and economic benefits incurred and how to develop an appreciation for their environment.



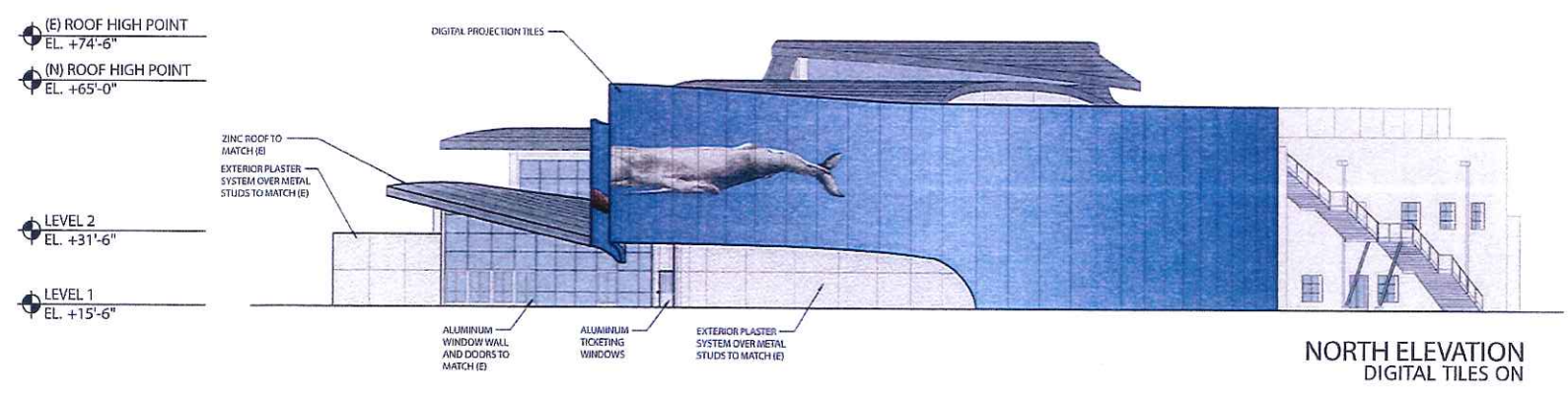
* NOTE: TOTAL DIGITAL TILE SURFACE AREA = 11,520 SQ.FT.



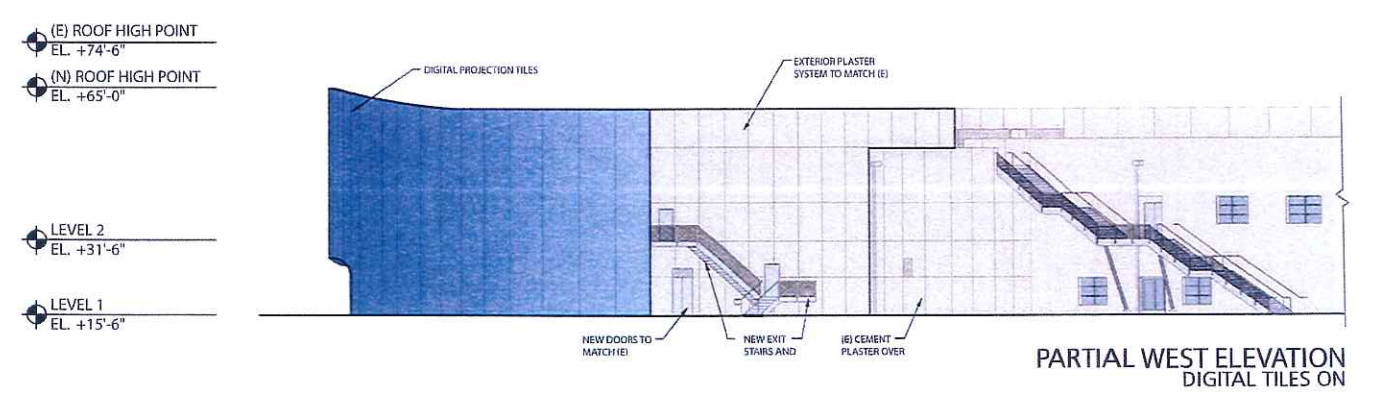
EAST ELEVATION
DIGITAL TILES ON



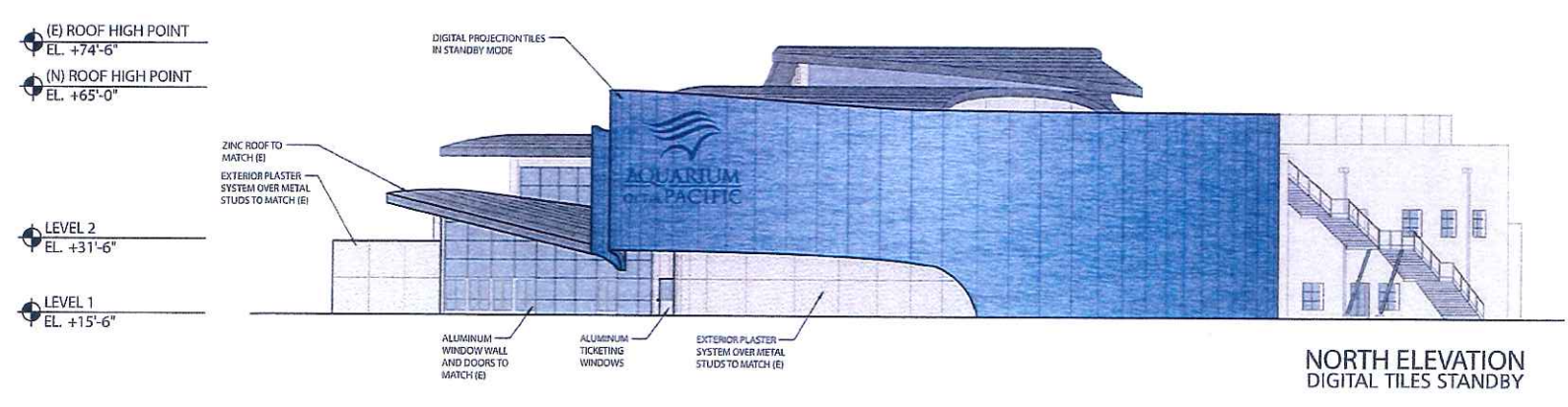
EAST ELEVATION
DIGITAL TILES STANDBY



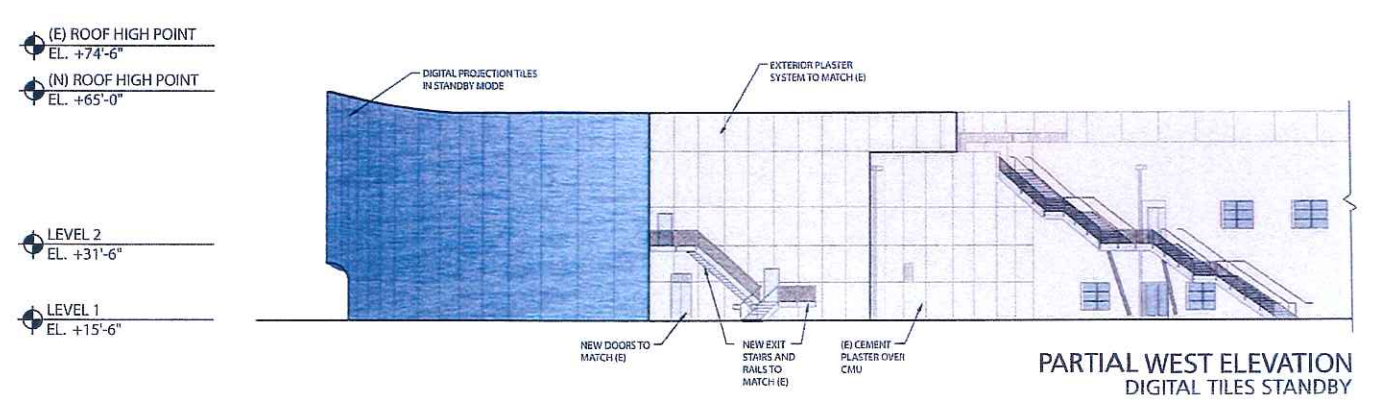
NORTH ELEVATION
DIGITAL TILES ON



PARTIAL WEST ELEVATION
DIGITAL TILES ON

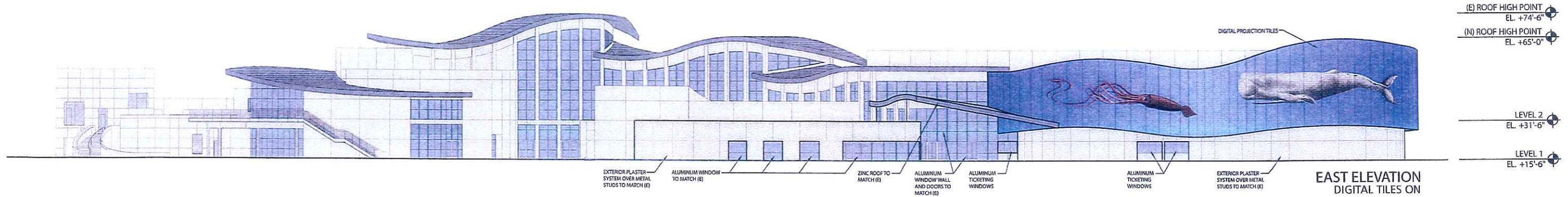


NORTH ELEVATION
DIGITAL TILES STANDBY

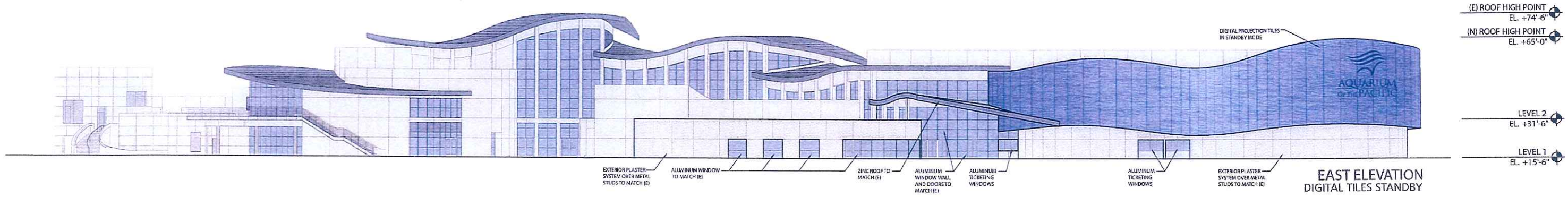


PARTIAL WEST ELEVATION
DIGITAL TILES STANDBY

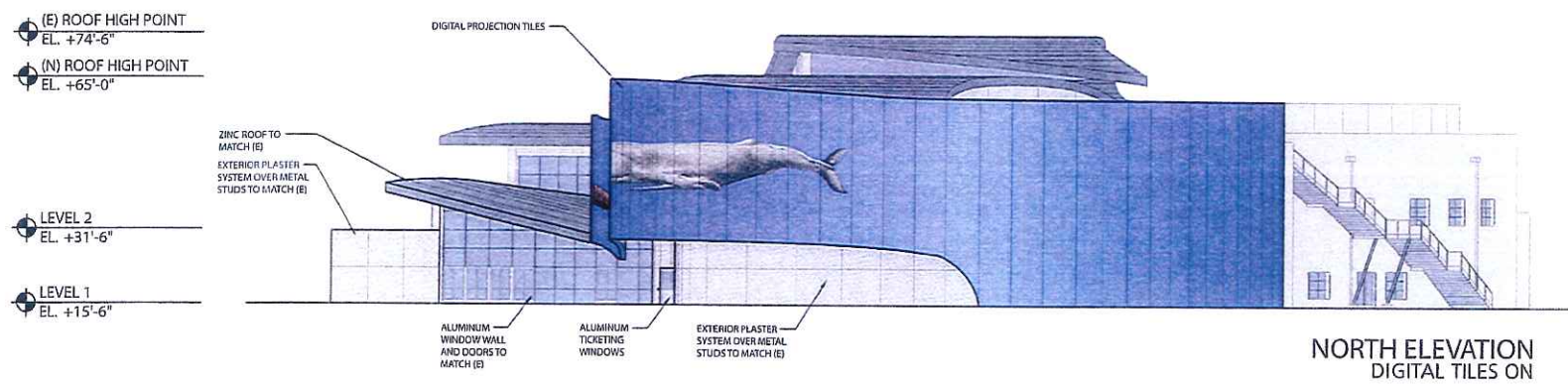
* NOTE: TOTAL DIGITAL TILE SURFACE AREA = 11,520 SQ.FT.



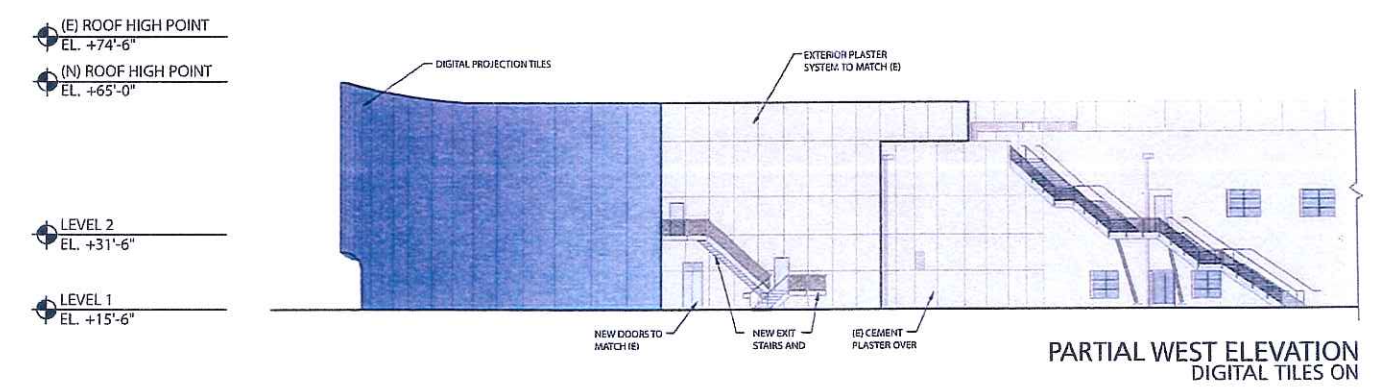
EAST ELEVATION
DIGITAL TILES ON



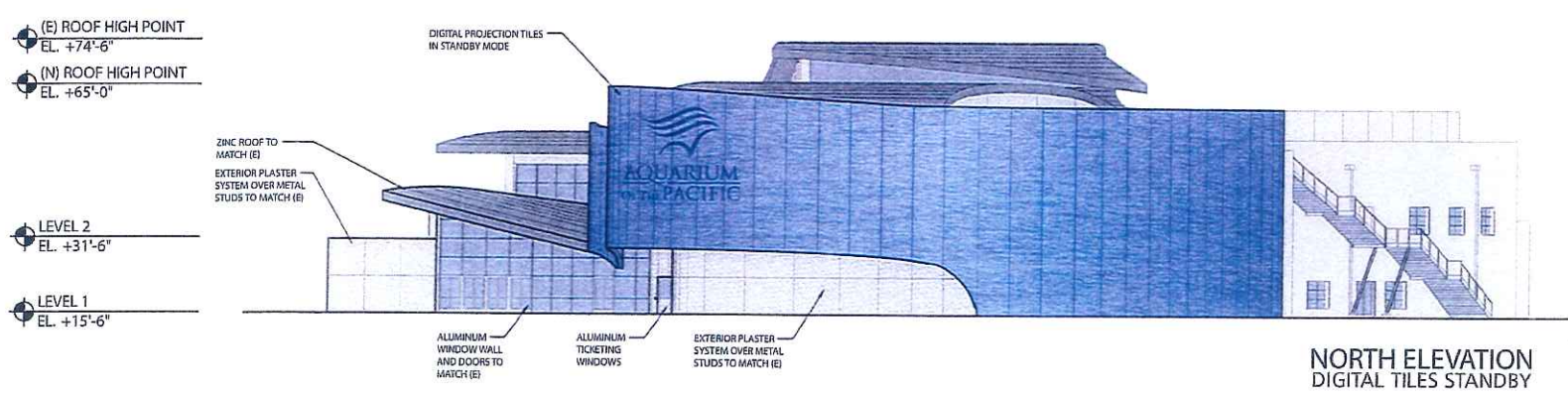
EAST ELEVATION
DIGITAL TILES STANDBY



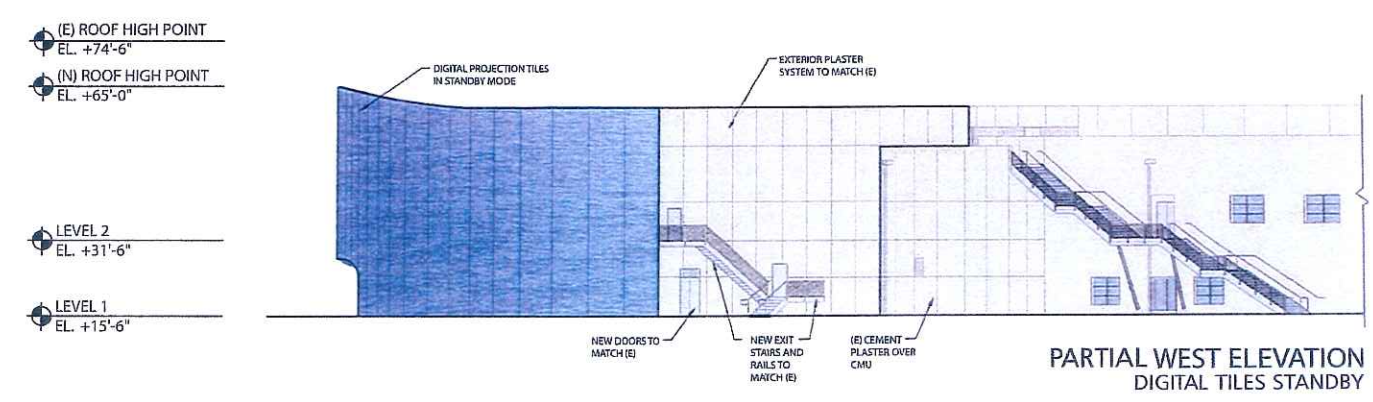
NORTH ELEVATION
DIGITAL TILES ON



PARTIAL WEST ELEVATION
DIGITAL TILES ON



NORTH ELEVATION
DIGITAL TILES STANDBY



PARTIAL WEST ELEVATION
DIGITAL TILES STANDBY