

1  
2  
3  
4

**THIRD AMENDMENT TO  
FIXED BASE OPERATION LEASE**

**21569**

5 THIS THIRD AMENDMENT TO FIXED BASE OPERATION LEASE is made and  
6 entered into in duplicate as of the 5<sup>th</sup> day of March, 200~~2~~<sup>3/9</sup>, pursuant to minute  
7 order adopted by the City Council of the City of Long Beach at its meeting of December 17,  
8 2002, by and between the CITY OF LONG BEACH, a municipal corporation  
9 ("LANDLORD") and GULFSTREAM AEROSPACE CORPORATION, a California  
10 corporation formerly known as 7701 Woodley Avenue Corporation, having its place of  
11 business at 4150 Donald Douglas Drive, Long Beach, California 90808 ("TENANT").  
12

13 1. Recitals. This Third Amendment is made with reference to the following facts  
14 and objectives:

15 1.1 The parties entered into a lease as of March 14, 1989 (the "Lease"),  
16 pursuant to which LANDLORD leased approximately 12.665 acres of land at the  
17 Long Beach Municipal Airport ("Leased Premises") to TENANT.  
18

19 1.2 The Lease was amended by a First Amendment to Fixed Base  
20 Operation Lease dated as of September 21, 1990, and a Second Amendment to  
21 Fixed Base Operations Lease dated as of December 24, 1998. The Lease as  
22 amended is referred to herein as the "Lease".  
23

24 1.3 The parties desire to further amend the Lease by removing a 400  
25 square foot area of land ("Planter Area") from the Leased Premises. The Planter  
26 Area is depicted on Exhibit "A" attached hereto and incorporated herein by this  
27 reference.  
28


///



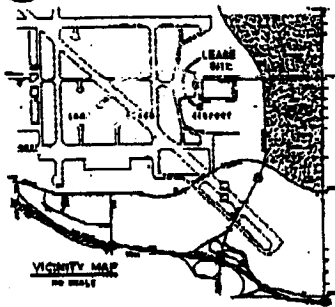
1  
2  
3  
4  
5  
6  
7  
8  
9  
10  
11  
12  
13  
14  
15  
16  
17  
18  
19  
20  
21  
22  
23  
24  
25  
26  
27  
28

The foregoing Third Amendment to Fixed Base Operation Lease is approved  
as to form this 19<sup>th</sup> day of Feb, 2002.

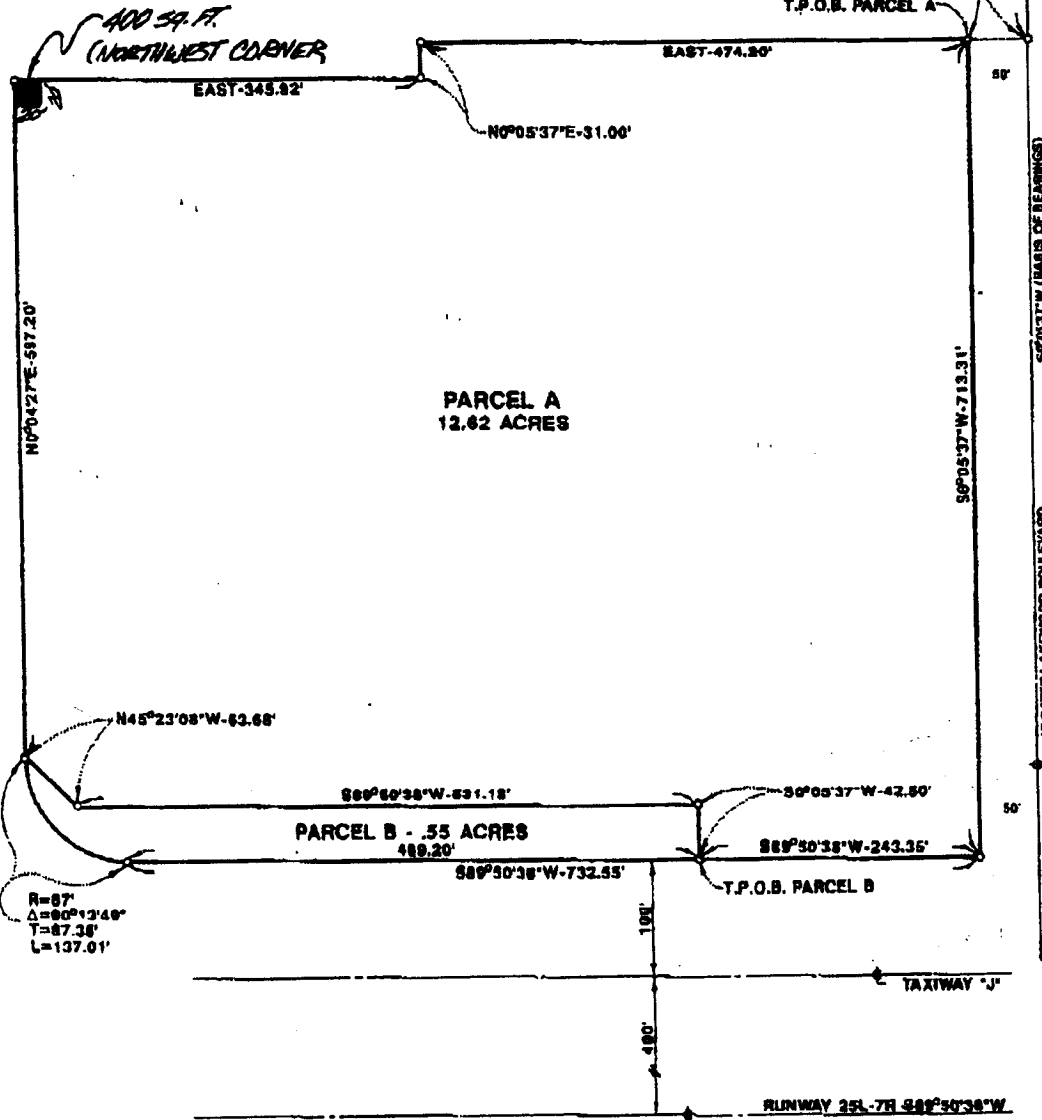
ROBERT E. SHANNON, City Attorney

By:   
Everett L. Glenn, Deputy

SCALE: 1"=100'



P.O.B. CLEARWATER MONUMENT G10  
NE CORNER LOT 98, TRACT 8084 M.B. 171, P. 84-28



R=87'  
Δ=80°13'40"  
T=87.38'  
L=137.01'

*A.R. Lubomel* 3/23/89  
CHIEF SURVEYOR L.S. 4808  
*Edward J. Berg* 3/23/89  
DIVISION ENGINEER C.E. 37032  
*Chris Kump* 3/29/89  
MANAGER AIRPORT BUREAU

FIELD WORK		
BOOK	PAGE	DATE
LEA	98-108	5-18-77
L1144	123-124	2-8-89

DRAWINGS		
DWG. NO.	PAGE	DATE
N-1083		12-22-78

CITY OF LONG BEACH - CALIFORNIA  
DEPARTMENT OF PUBLIC WORKS, ENGINEERING BUREAU  
**7701 WOODLEY AVENUE CORPORATION**  
LEASE AT LONG BEACH AIRPORT  
DATE APPROVED 3/29/89 *Edward J. Berg* ACTING CITY ENGINEER  
PREPARED S.SMITH CHECKED J.McKEAN LEASE NO. DRAWING NO. A-1542

EXHIBIT "A"