



# CITY OF LONG BEACH

# C-15

## DEPARTMENT OF PUBLIC WORKS

333 WEST OCEAN BOULEVARD • LONG BEACH, CA 90802 • (562) 570-6383 • FAX (562) 570-6012

August 4, 2009

HONORABLE MAYOR AND CITY COUNCIL  
City of Long Beach  
California

### RECOMMENDATION:

Authorize the City Manager to execute a quitclaim deed for a portion of a utility easement located at 4442-4466 Atlantic Avenue. (District 8)

### DISCUSSION

In 2003 the City of Long Beach vacated a portion of Atlantic Avenue adjacent to the Bixby Knolls Shopping Center that was no longer needed for street purposes, but at the time, retained a utility easement for a water line that was to remain. A Marshall's Department Store is now proposed at 4442-4466 Atlantic Avenue that will encroach on the water line and corresponding utility easement. This will necessitate the relocation of the water line, which the developer has received approval to do from the Water Department, and will be done at the developer's cost.

The relocation of the water line would occur during the construction of the Marshalls Department Store. Once completed, the corresponding utility easement would no longer be needed. This request seeks approval for the quitclaim of a portion of the utility easement, as shown on the attached Exhibit A, that will no longer be needed subsequent to the satisfactory relocation of the water line. In conformance with the Environmental Quality Act, Categorical Exemption No. 07-240 was filed.

This matter was reviewed by Deputy City Attorney Linda Trang on June 29, 2009, and by Budget and Performance Management Bureau Manager David Wodynski on July 15, 2009.

### TIMING CONSIDERATIONS

City Council action on this item is not time critical.

**DIRECTOR'S OFFICE  
BUDGET & PERSONNEL**  
333 W. Ocean Blvd., 9<sup>th</sup> Floor  
Long Beach, CA 90802  
Ph. (562) 570-6383  
Fax (562) 570-6012

**ENGINEERING**  
333 W. Ocean Blvd., 9<sup>th</sup> Floor  
Long Beach, CA 90802  
Ph. (562) 570-6634  
Fax (562) 570-6012

**ENVIRONMENTAL  
SERVICES**  
2929 E. Willow Street  
Long Beach, CA 90806  
Ph. (562) 570-2850  
Fax (562) 570-2861

**FLEET SERVICES**  
2600 Temple Avenue  
Long Beach, CA 90806  
Ph. (562) 570-5400  
Fax (562) 570-5414

**PUBLIC SERVICE**  
1601 San Francisco Avenue  
Long Beach, CA 90813  
Ph. (562) 570-2782  
Fax (562) 570-2729

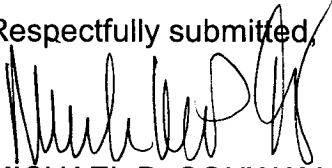
FISCAL IMPACT

A quitclaim processing fee of \$2,396 was deposited in the General Fund (GP) in the Department of Public Works.

SUGGESTED ACTION:

Approve recommendation.

Respectfully submitted,



MICHAEL P. CONWAY  
DIRECTOR OF PUBLIC WORKS

MPC:MAC:GMM:SC  
P:\CL\ROW Atlantic 4442 utility QC CL. Rev1doc

Exhibit A - Map

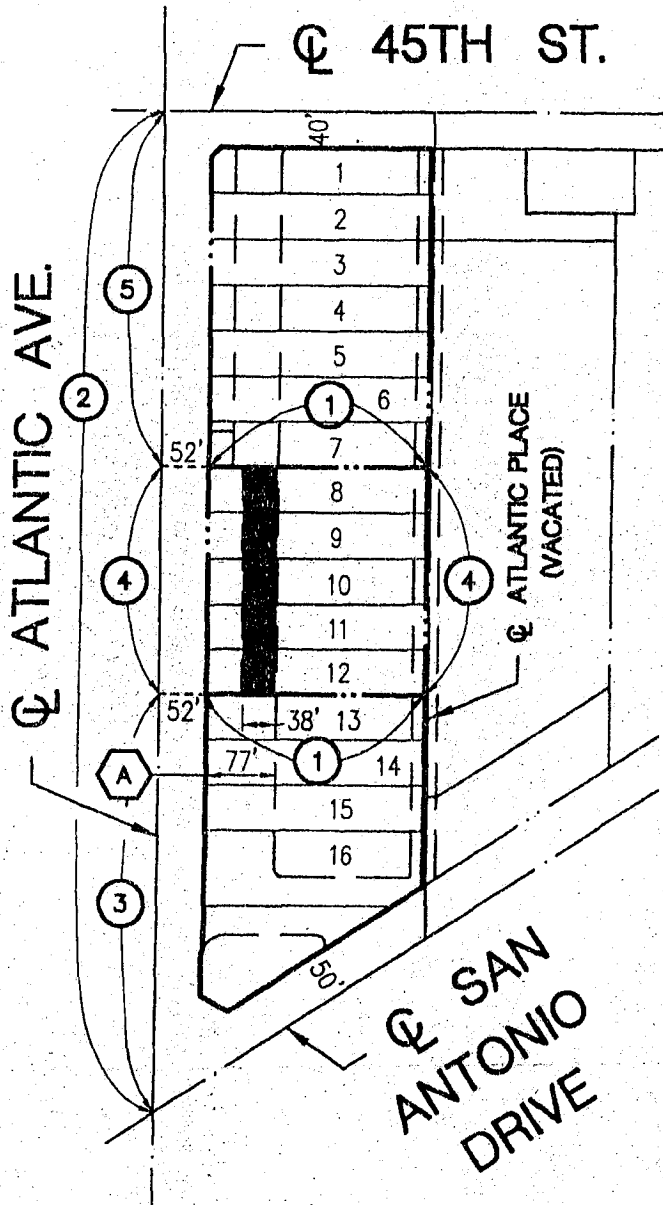
APPROVED:






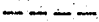

---

PATRICK H. WEST  
CITY MANAGER


SKETCH SHOWING PORTION OF ATLANTIC AVENUE EASEMENT  
 WITHIN LOTS 8 THRU 12 OF TRACT 13500 M.B. 279/22-23  
 TO BE QUITCLAIMED.



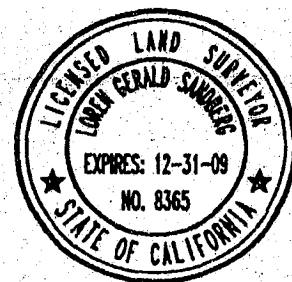
**LEGEND:**

-  INDICATES PORTION TO BE QUITCLAIMED
-  PROPERTY LINE
-  EASEMENT LINE
-  LOT TIES
-  LOT LINES

**EASEMENT NOTES:**

-  THAT PORTION OF ATLANTIC AVENUE AS VACATED BY RESOLUTION, A CERTIFIED COPY OF WHICH WAS RECORDED JUNE 17, 2003 AS INST. NO. 03-1720145 AND NOV. 12, 2003 AS INST. NO. 03-3393599, BOTH OF OFFICIAL RECORDS

 SCALE: 1" = 200'



**BEARING TABLE:**

①	— N89°44'05"W	240.50'
②	— N00°15'55"E	1100.00'
③	— N00°15'55"E	460.00'
④	— N00°15'55"E	250.00'
⑤	— N00°15'55"E	390.00'