

C-30

April 14, 2020

HONORABLE MAYOR AND CITY COUNCIL
City of Long Beach
California

RECOMMENDATION:

Authorize the City Manager, or designee, to accept easement deeds from Pacific Castle Newport I, LLC, a Delaware limited liability company, as to an undivided 53.75 percent interest, Pacific Castle Investments I, LLC, a Delaware limited liability company, as to an undivided 2.5 percent interest, and Pacific Castle Long Beach, L.P., a California limited partnership, as to an undivided 43.75 percent interest, as tenants in common, the owners of the property at 6400 East Pacific Coast Highway, for the installation of public utilities; and,

Accept State Clearinghouse Number 2014031059. (District 3)

DISCUSSION

Pacific Castle Newport I, LLC, a Delaware limited liability company, as to an undivided 53.75 percent interest, Pacific Castle Investments I, LLC, a Delaware limited liability company, as to an undivided 2.5 percent interest, and Pacific Castle Long Beach, L.P., a California limited partnership, as to an undivided 43.75 percent interest, as tenants in common, owners of the property at 6400 East Pacific Coast Highway, have replaced the old SeaPort Marina Hotel and surface parking areas with a commercial development comprising of approximately 245,000 square feet of gross floor area. To accommodate the improvements and modifications, it is necessary that easements be granted to the City to allow for the installation of double-check detector valves (Attachments A1-A3). These devices provide backflow prevention to protect water supplies from contamination.

City staff conducted a review of the affected agencies and there were no objections to the proposed easement to be dedicated. In conformance with the California Environmental Quality Act (CEQA), State Clearinghouse Number 2014031059 was issued in August 2017.

This matter was reviewed by Deputy City Attorney Erin Weesner-McKinley on February 7, 2020 and by Revenue Management Officer Geraldine Alejo on March 26, 2020.

TIMING CONSIDERATIONS

City Council action on this matter is not time critical.

HONORABLE MAYOR AND CITY COUNCIL

April 14, 2020

Page 2

FISCAL IMPACT

An easement processing fee in the amount of \$3,195 was deposited in the General Fund Group in the Public Works Department. This recommendation has no staffing impact beyond the normal budgeted scope of duties and is consistent with existing City Council priorities. There is no local job impact associated with this recommendation.

SUGGESTED ACTION:

Approve recommendation.

Respectfully submitted,



CRAIG A. BECK
DIRECTOR OF PUBLIC WORKS

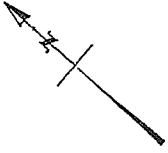
APPROVED:



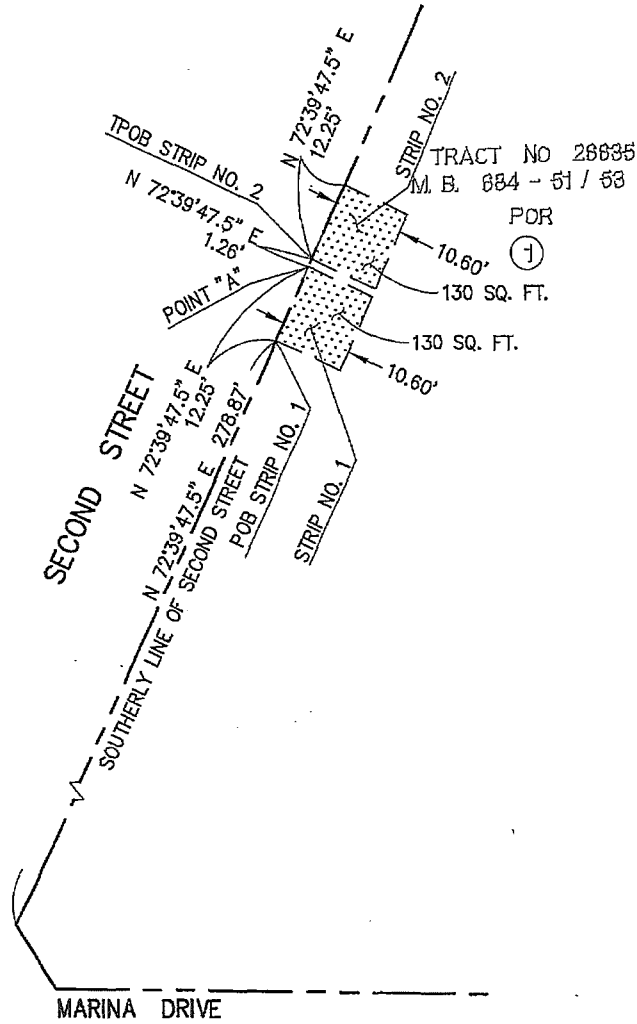
THOMAS B. MODICA
ACTING CITY MANAGER

CB:EL:JH:BP:sdj:jc

ATTACHMENT: A – DEDICATION SKETCHES

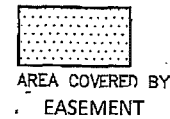


SCALE 1"=40'



SKETCH NO. 829E
SKETCHES SHOWING EASEMENTS OVER
A PORTION OF LOT 1 OF TRACT NUMBER
26635 GRANTED
FOR WATER PURPOSES

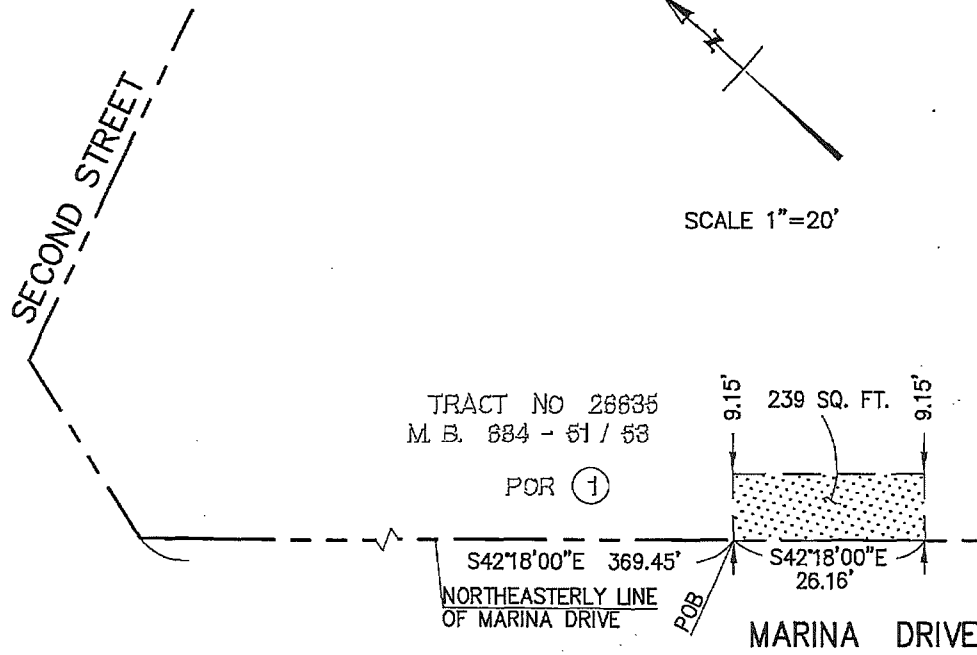
ATTACHMENT A1



DEPARTMENT OF PUBLIC WORKS
ENGINEERING BUREAU
CITY OF LONG BEACH, CALIFORNIA

SKETCH NO. 829E
SKETCHES SHOWING EASEMENTS OVER
A PORTION OF LOT 1 OF TRACT NUMBER
26635 GRANTED
FOR WATER PURPOSES

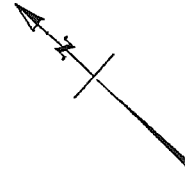
ATTACHMENT A2




AREA COVERED BY
EASEMENT

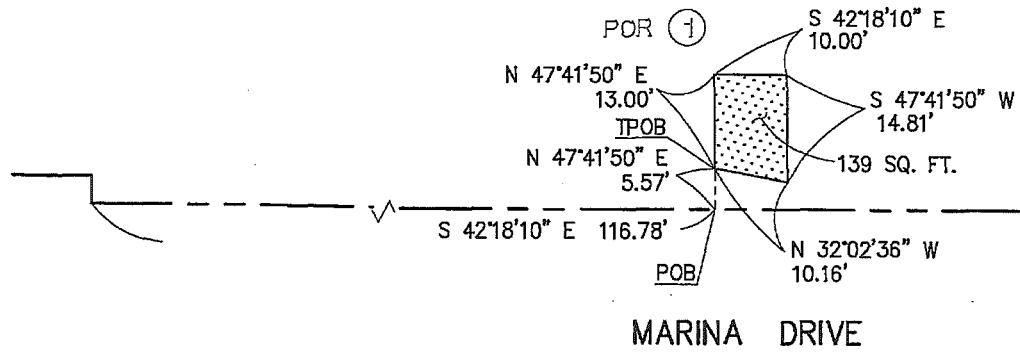
DEPARTMENT OF PUBLIC WORKS
ENGINEERING BUREAU
CITY OF LONG BEACH, CALIFORNIA

SKETCH NO. 829E
SKETCHES SHOWING EASEMENTS OVER
A PORTION OF LOT 1 OF TRACT NUMBER
26635 GRANTED
FOR WATER PURPOSES



SCALE 1"=20'

TRACT NO 26635
M. B. 684 - 51 / 53



ATTACHMENT A3


AREA COVERED BY
EASEMENT

DEPARTMENT OF PUBLIC WORKS
ENGINEERING BUREAU
CITY OF LONG BEACH, CALIFORNIA