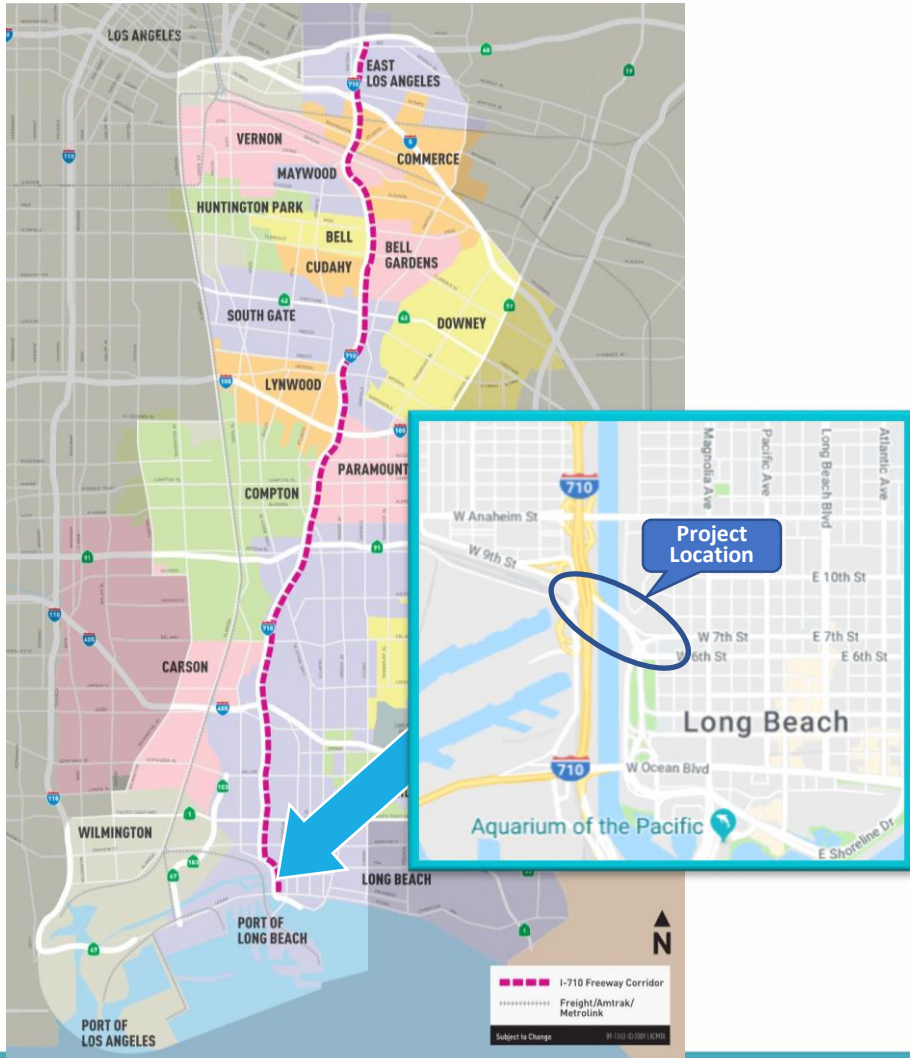


Shoemaker Bridge Replacement Project



CEQA Public Hearing

April 21, 2020

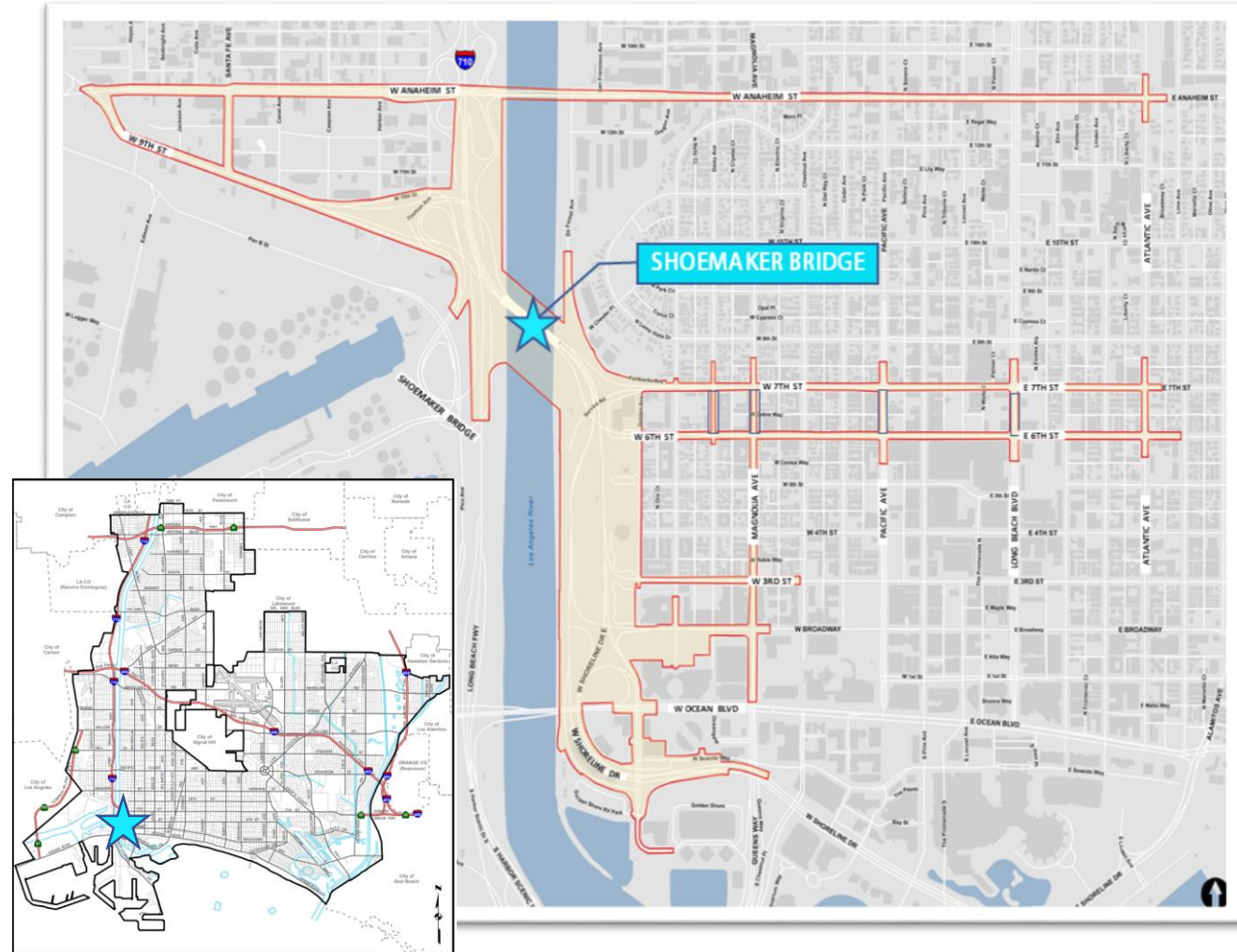


- The existing bridge was built in 1954 and has structural and operational deficiencies.
- Construct a facility that meets current State highway structural and geometric design standards.
- Reduce high accident rates and fatalities and improve safety and operations
- Improve connectivity from between downtown Long Beach and regional transportation facilities.
- Compatible with planned freeway improvements and downtown development projects (Drake-Chavez Park Master Plan, I-710 Corridor, LB-MUST)
- An Early Action Project (EAP) of the I-710 Corridor

The Shoemaker Bridge Replacement Project is located on the west side of Long Beach at the southern end of the SR-710 and is bisected by the Los Angeles River.

The project limits are generally bounded by:

- 9th Street and 10th Street ramp connections and West Shoreline Drive to the west;
- Anaheim Street to the north;
- Magnolia Avenue to the east with the exception of Anaheim, 6th and 7th Streets that extend to Atlantic Avenue; and
- Ocean Boulevard and West Shoreline Drive to the south.





Alternatives considered in the Project Approval/ Environmental Document are:

- Alternative 1 - No Build
- Alternative 2 - Bridge Replacement and Repurpose Existing Bridge
- Alternative 3 - Bridge Replacement and Remove Existing Bridge

Design options considered include:

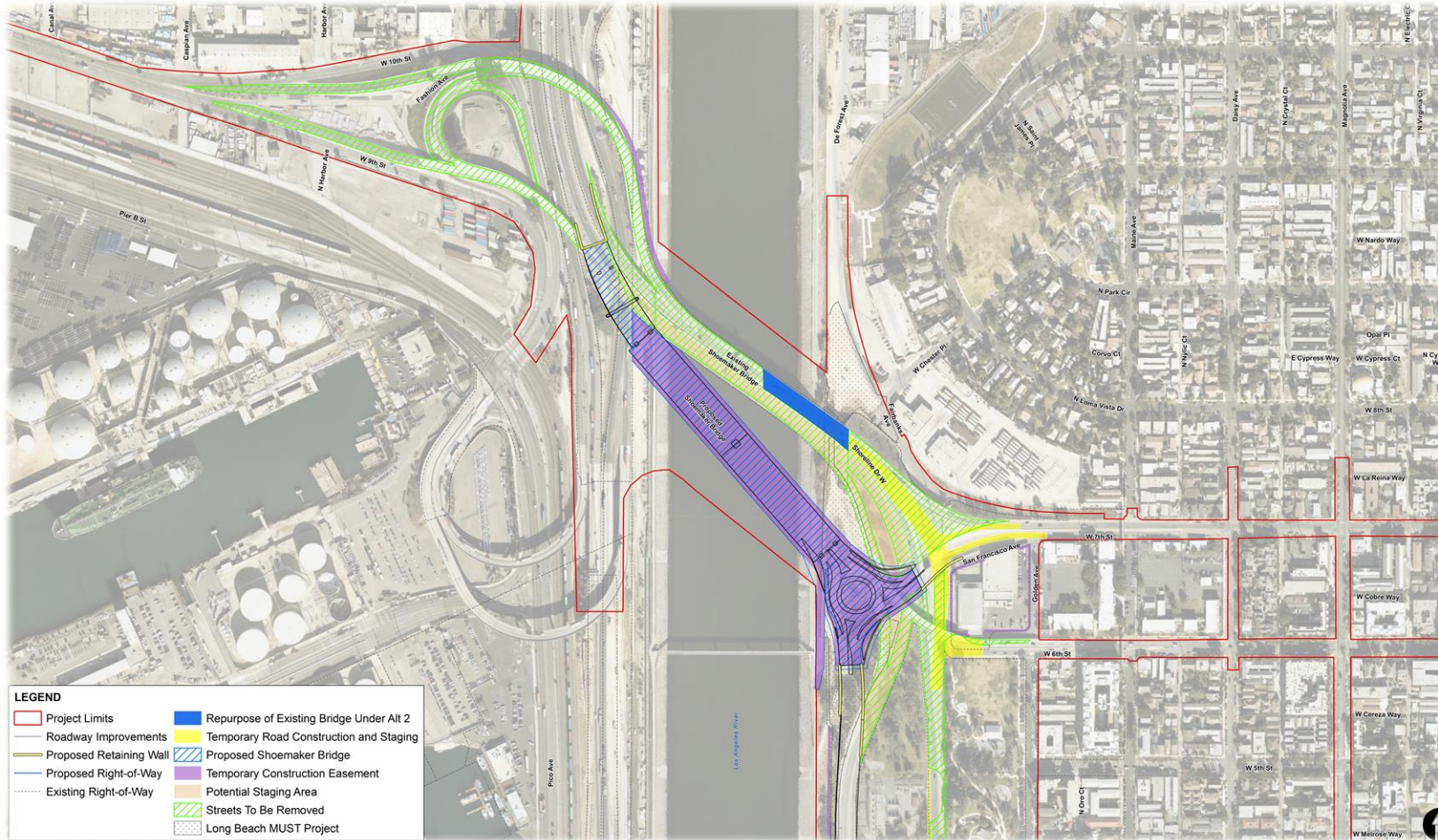
- Roundabout
- T-Intersection



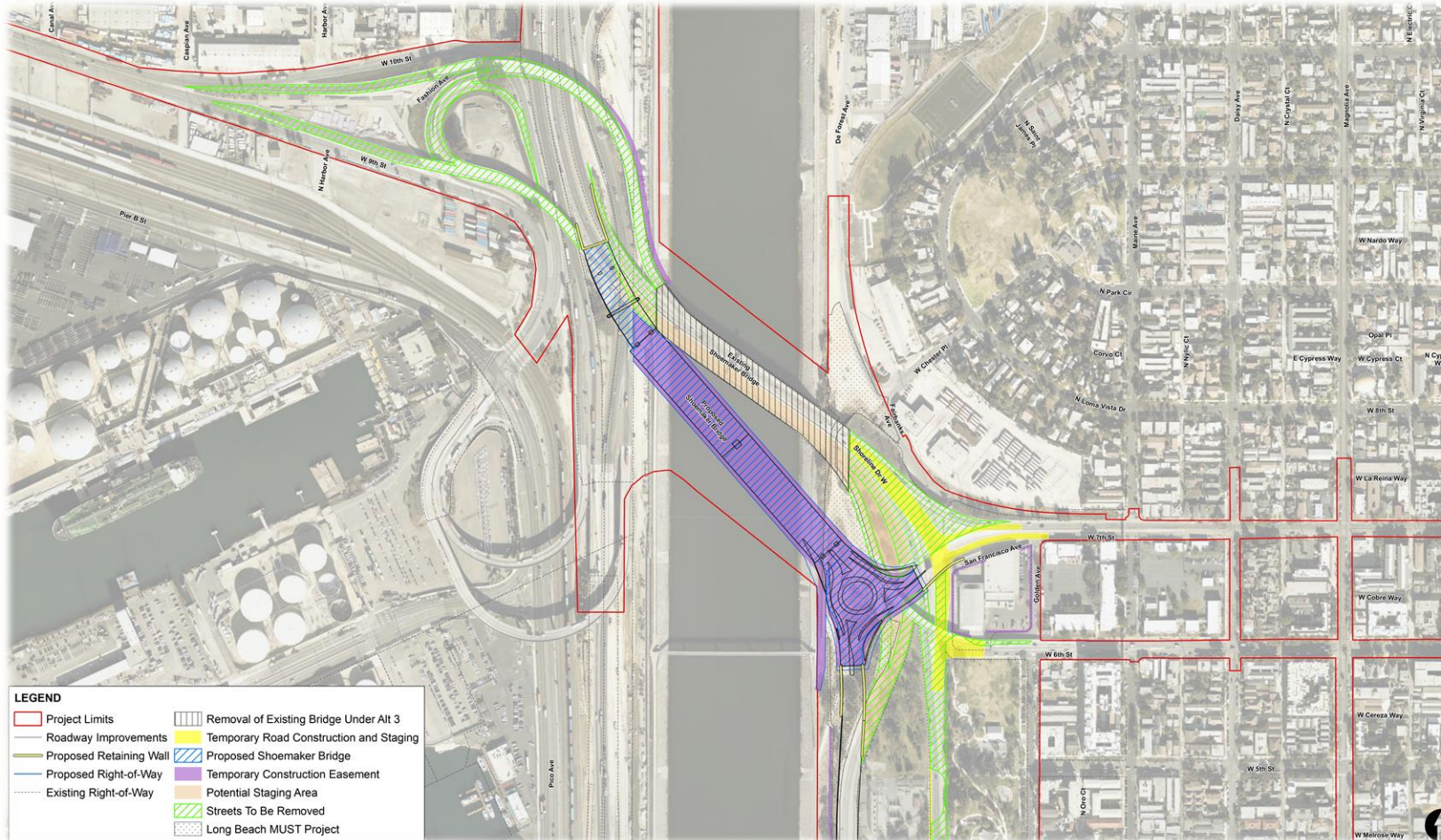
Alternative 1 (No Build)

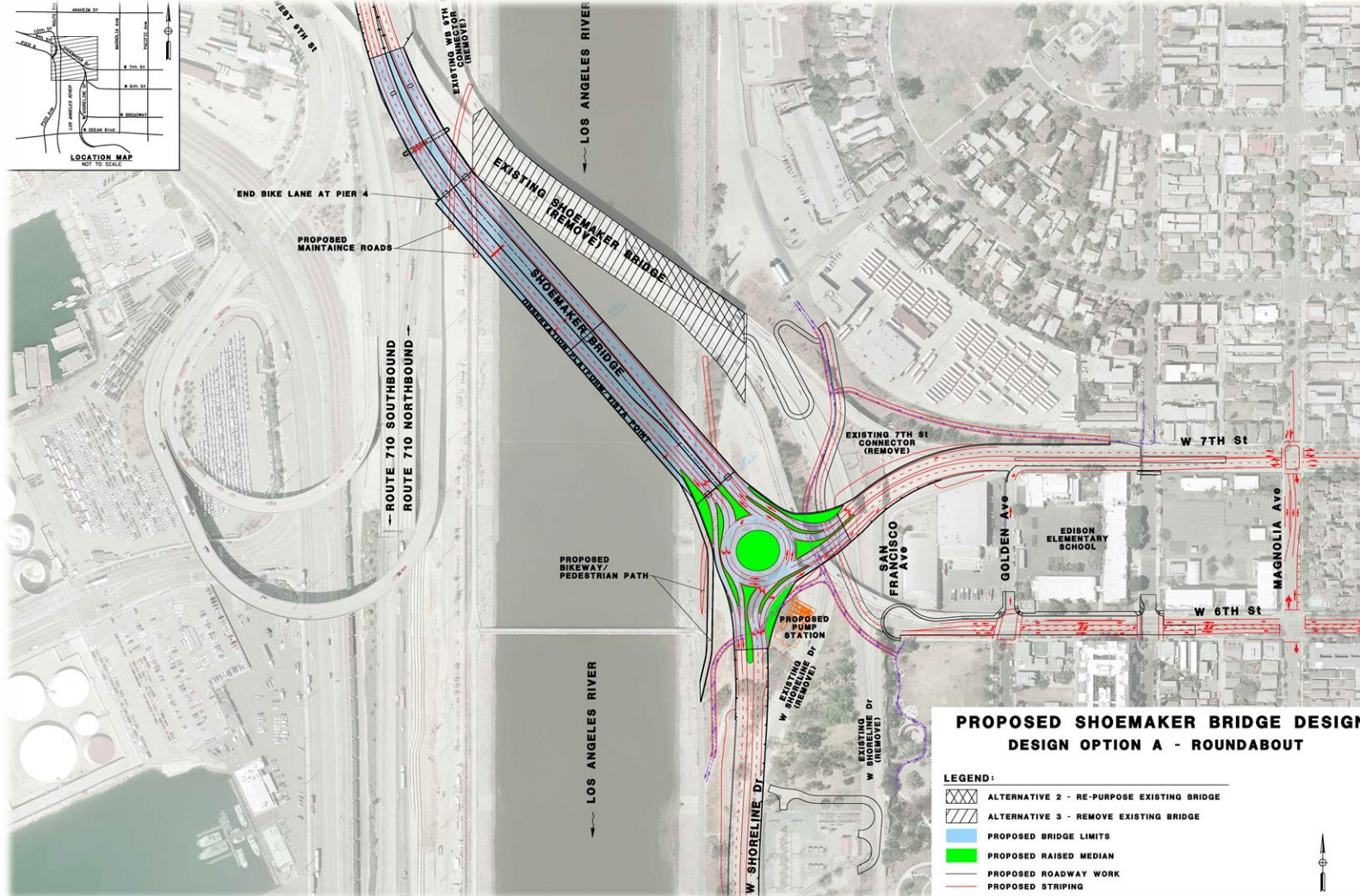
- Leave “as-is” / “do nothing” option
- No construction activity
- Existing bridge would continue to not meet current structural and geometric standards
- Safety and connectivity will not be improved (higher than state average accident rate)
- Will not be consistent with future growth projections and planned projects

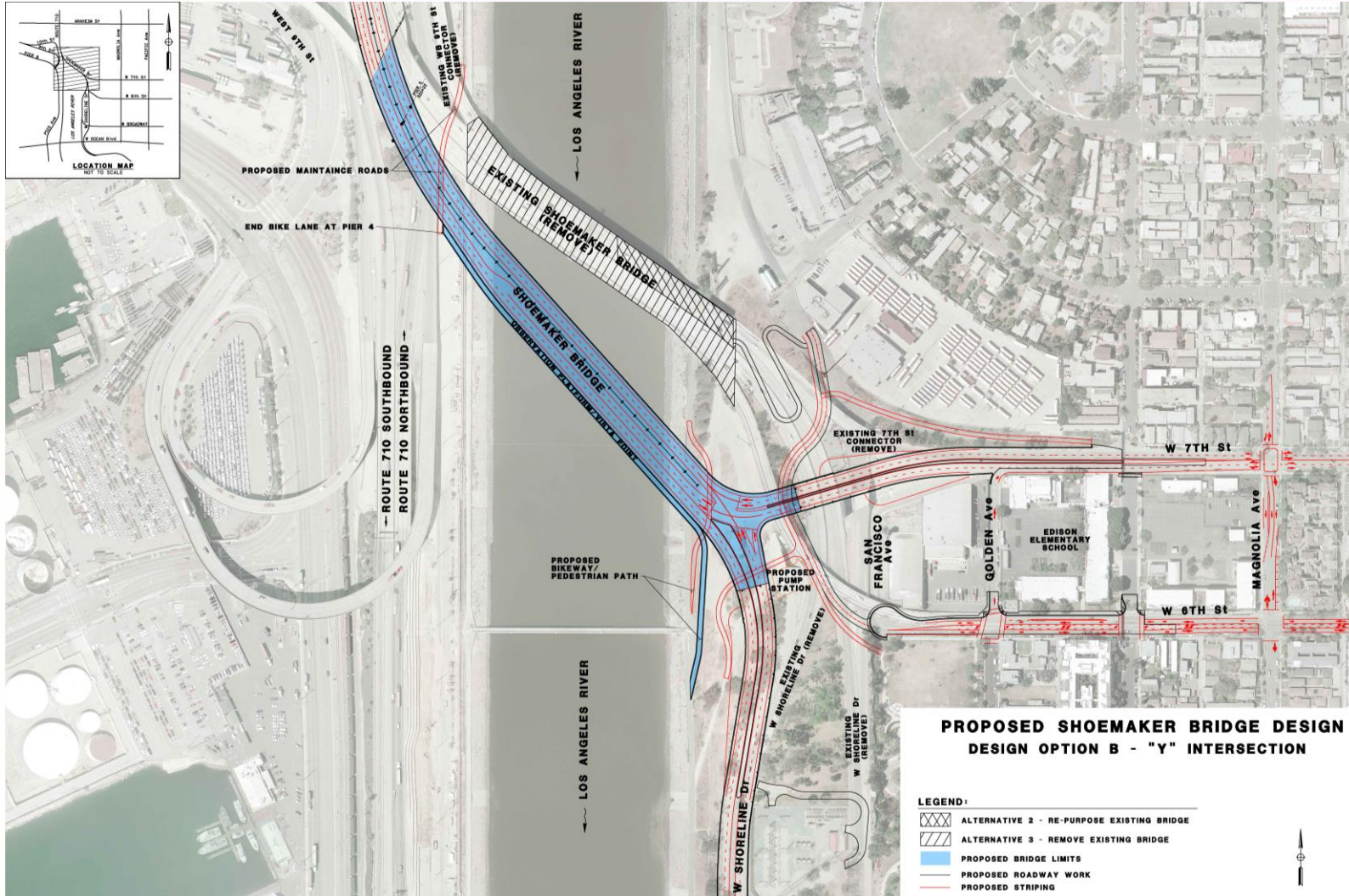
Reuse Portion of Existing Shoemaker Bridge for Non-Transportation Use



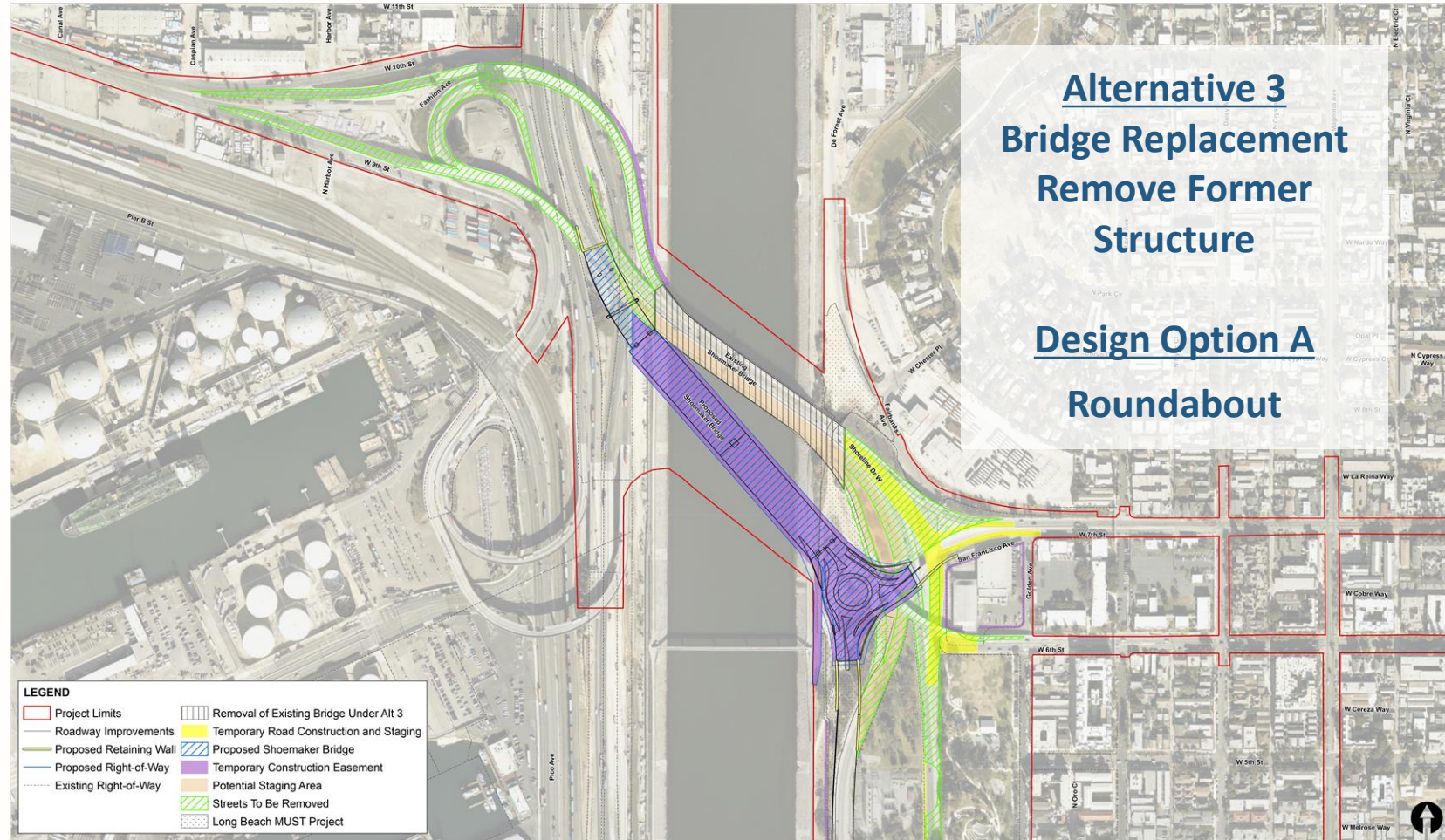
Bridge Replacement and Remove Existing Shoemaker Bridge







- Improve safety, operations, and improve connectivity between downtown Long Beach and regional transportation facilities.
- Accommodate planned improvements in the area, such as the City’s planned expansion of Cesar E. Chavez and Drake Parks.
- Meet the needs for the projected increased demand for non-motorized transportation facilities within the City.
- Realignment of Shoreline Drive would allow for more usable park space within Cesar Chavez Park.





BEFORE – CHAVEZ PARK IS DISCONTINUOUS, UNUSABLE PORTIONS



AFTER – MAKING MORE USABLE SPACE

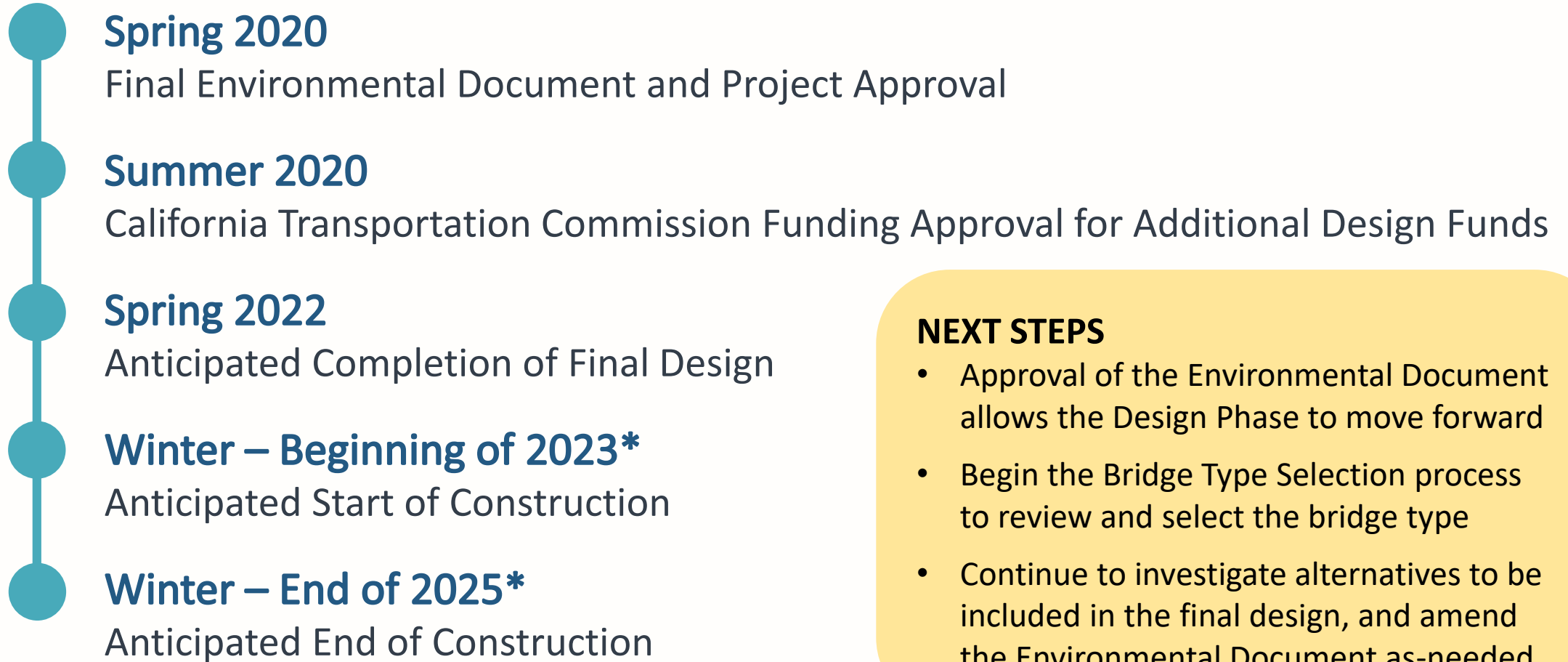




No Impact	Less Than Significant Impact	Less Than Significant Impact with Mitigation Incorporated	Significant and Unavoidable Impact
<ul style="list-style-type: none"> • Agriculture and Forest Resources • Mineral Resources • Population & Housing • Public Services • Wildfire 	<ul style="list-style-type: none"> • Aesthetics • Air Quality • Cultural Resources • Energy • Greenhouse Gas Emissions • Hazards and Hazardous Materials • Hydrology and Water Quality • Noise • Recreation • Transportation • Tribal Cultural Resources • Utilities and Emergency Services • Mandatory Findings of Significance 	<ul style="list-style-type: none"> • Biological Resources • Geology and Soils • Land Use and Planning 	<ul style="list-style-type: none"> • None

Environmental Review Process

- 2016-2019 Tech Studies + Draft EIR
- Sept 2019 Circulation of Draft EIR
- Oct 2019 Public Meeting
- Dec 2019 Response to comments
- April 2020 Public Hearing



*pending funding

NEXT STEPS

- Approval of the Environmental Document allows the Design Phase to move forward
- Begin the Bridge Type Selection process to review and select the bridge type
- Continue to investigate alternatives to be included in the final design, and amend the Environmental Document as-needed

- Receive the supporting documentation into the record
- Conclude the public hearing
- Adopt a Resolution approving and certifying Environmental Impact Report (EIR 01-20)/Environmental Assessment No. 273000, making certain California Environmental Quality Act (CEQA) Findings and Determinations relative thereto
- Adopting a Mitigation Monitoring and Reporting Program (Environmental Commitments) as set forth in said Resolution in accordance with those measures as set forth in EIR 01-20; for the Shoemaker Bridge Replacement Project (State Clearinghouse No. 2016041007)

Shoemaker Bridge Replacement Project

CITY OF LONG BEACH
LOS ANGELES COUNTY, CALIFORNIA
07-LA-710 (PM 6.0/6.4)
EA: 27300/ SCH No. 2016041007

Final Environmental Impact Report/Environmental Assessment with Finding of No Significant Impact



Prepared by the
State of California, Department of Transportation
and the
City of Long Beach

The environmental review, consultation, and any other actions required by applicable Federal environmental laws for this project are being, or have been, carried out by Caltrans pursuant to 23 USC 327 and the Memorandum of Understanding dated December 23, 2016 and executed by FHWA and Caltrans.



APRIL 2020



THANK YOU