

InSite Property Group  
866.521.8292  
[www.insitepg.com](http://www.insitepg.com)  
Redondo Beach, CA

# 3701 PACIFIC PL.

LONG BEACH, CA

## Secure Space 3701 Pacific Place



## PROJECT CONTACTS

### OWNERS:

InSite Property Group  
866.521.8292  
www.insitepg.com  
Redondo Beach, CA

### OPERATOR:

Secure Space  
1.877.693.6223  
securespace.com

### MANAGING PARTNER

Keith Wetzel  
InSite Property Group  
keith@insitepg.com  
c.917.566.9053

811 N. Catalina Ave Suite #1306  
Redondo Beach, CA 90277

### MANAGING PARTNER

Paul Brown  
InSite Property Group  
paul@pbbrown.com  
c.480.586.0954  
811 N. Catalina Ave Suite #1306  
Redondo Beach, CA 90277

### DIRECTOR OF DESIGN

C.J. Rogers  
InSite Property Group  
cj@insitepg.com  
c.480.202.5221  
811 N. Catalina Ave Suite #1306  
Redondo Beach, CA 90277

### ARCHITECT

Shab Vakili  
KSP Studio Inc.  
Shab@kspstudio.com  
949.380.3970  
23 Orchard Rd., Suite 200  
Lake Forest, CA 92630

### DEVELOPMENT MANAGER

Brian Sorensen  
InSite Property Group  
bsorensen@insitepg.com  
c.575.936.0877  
811 N. Catalina Ave Suite #1306  
Redondo Beach, CA 90277

### CIVIL ENGINEER

Geoffrey Ayton  
Truxaw  
geoffreyayton@truxaw.com  
c.310.972.1717  
1915w. Orangewood Ave, Suite 101  
Orange, CA 92868

### DIRECTOR OF OPERATIONS

Emily Hyun  
InSite Property Group  
emily@insitepg.com  
c.917.340.5477  
811 N. Catalina Ave Suite #1306  
Redondo Beach, CA 90277

### ENVIROMENTAL

Jaydeep Purandare  
Roux Environmental Consulting  
jpurandare@rouxinc.com  
5150 East Pacific Coast Highway  
Suite 450  
Long Beach, CA 90804

### DIRECTOR OF PRE-CONSTRUCTION

Nick Zent  
PB Brown Construction  
nzent@pbbrown.com  
c.307.371.0609  
42575 Melanie Place suite s  
Palm Desert, CA 92211

### DEVELOPMENT MANAGER

Annie Beak  
PB Brown Construction  
smoffitt@pbbrown.com  
c.480.204.1159  
42575 Melanie Place suite s  
Palm Desert, CA 92211

### STRUCTURAL ENGINEER

Wesley Cullumber  
Cullumber Engineering & Design inc.  
wcullumber@cullumbereng.com  
916.251.9798  
6930 Destiny Dr Ste 300,  
Rocklin, CA 95677



This conceptual design is based upon a preliminary review of entitlement requirements and on unverified and possibly incomplete site and/or building information, and is intended merely to assist in exploring how the project might be developed. Signage shown is for illustrative purposes only and does not necessarily reflect municipal code compliance.

CONCRETE PLANTERS

PROPOSED LANDSCAPE PLAN  
3701 PACIFIC BLVD. LONG BEACH, CA



07.17.2020

PAGE  
4



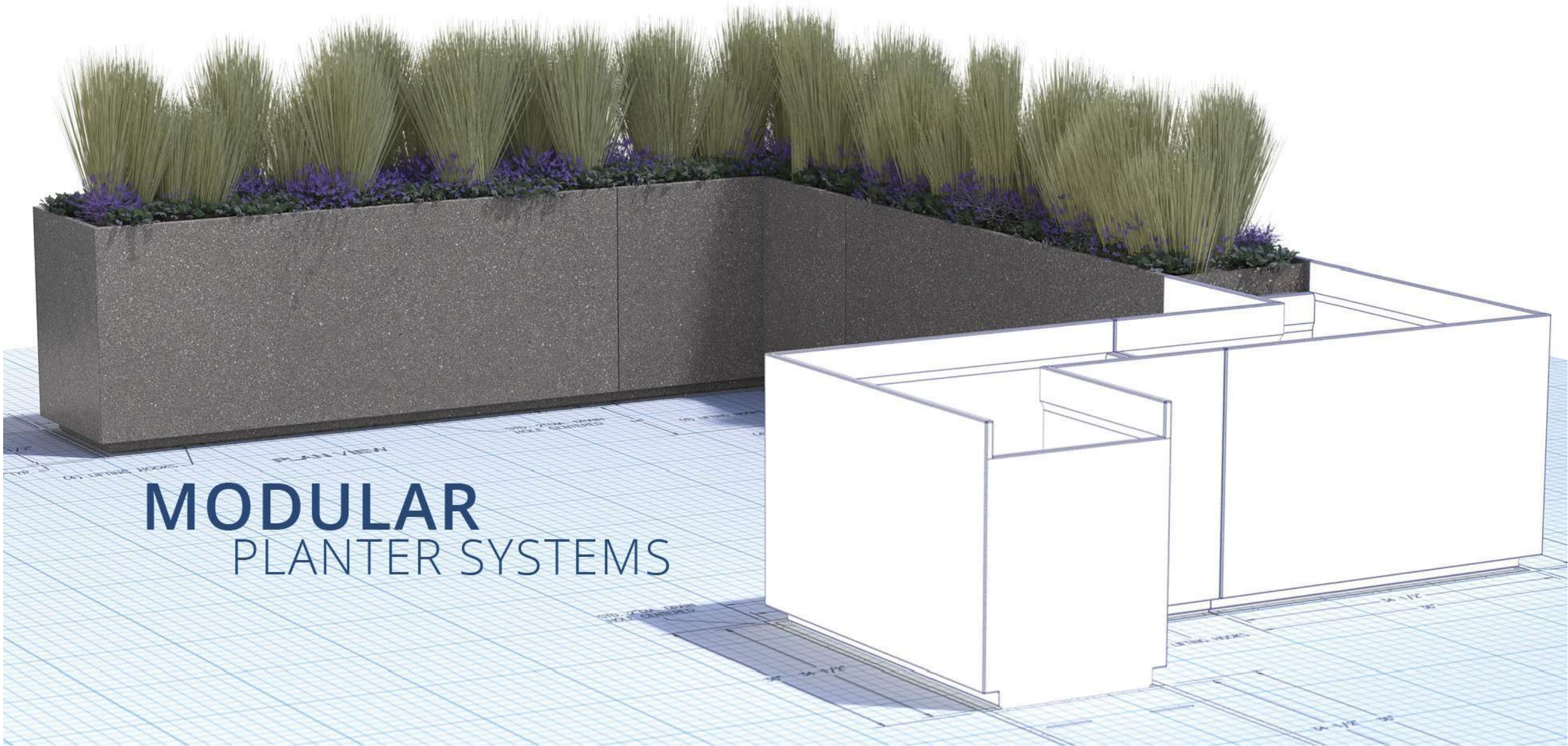
This conceptual design is based upon a preliminary review of entitlement requirements and on unverified and possibly incomplete site and/or building information, and is intended merely to assist in exploring how the project might be developed. Signage shown is for illustrative purposes only and does not necessarily reflect municipal code compliance.

PROPOSED MODULAR PLANTERS  
PROPOSED LANDSCAPE PLAN  
3701 PACIFIC BLVD. LONG BEACH, CA



07.17.2020

PAGE  
5



# MODULAR PLANTER SYSTEMS

This conceptual design is based upon a preliminary review of entitlement requirements and on unverified and possibly incomplete site and/or building information, and is intended merely to assist in exploring how the project might be developed. Signage shown is for illustrative purposes only and does not necessarily reflect municipal code compliance.

PROPOSED MODULAR PLANTERS

PROPOSED LANDSCAPE PLAN  
3701 PACIFIC BLVD. LONG BEACH, CA



07.17.2020

PAGE  
6



This conceptual design is based upon a preliminary review of entitlement requirements and on unverified and possibly incomplete site and/or building information, and is intended merely to assist in exploring how the project might be developed. Signage shown is for illustrative purposes only and does not necessarily reflect municipal code compliance.

CONCEPTUAL RENDERING

PROPOSED LANDSCAPE PLAN  
3701 PACIFIC BLVD. LONG BEACH, CA



07.17.2020

PAGE  
7



This conceptual design is based upon a preliminary review of entitlement requirements and on unverified and possibly incomplete site and/or building information, and is intended merely to assist in exploring how the project might be developed. Signage shown is for illustrative purposes only and does not necessarily reflect municipal code compliance.

CONCEPTUAL RENDERING

PROPOSED LANDSCAPE PLAN  
3701 PACIFIC BLVD. LONG BEACH, CA



07.17.2020

PAGE  
8



This conceptual design is based upon a preliminary review of entitlement requirements and on unverified and possibly incomplete site and/or building information, and is intended merely to assist in exploring how the project might be developed. Signage shown is for illustrative purposes only and does not necessarily reflect municipal code compliance.

CONCEPTUAL RENDERING

PROPOSED LANDSCAPE PLAN  
3701 PACIFIC BLVD. LONG BEACH, CA



07.17.2020

PAGE  
9





This conceptual design is based upon a preliminary review of entitlement requirements and on unverified and possibly incomplete site and/or building information, and is intended merely to assist in exploring how the project might be developed. Signage shown is for illustrative purposes only and does not necessarily reflect municipal code compliance.

CONCEPTUAL RENDERING

PROPOSED LANDSCAPE PLAN  
3701 PACIFIC BLVD. LONG BEACH, CA



07.17.2020

PAGE  
10



This conceptual design is based upon a preliminary review of entitlement requirements and on unverified and possibly incomplete site and/or building information, and is intended merely to assist in exploring how the project might be developed. Signage shown is for illustrative purposes only and does not necessarily reflect municipal code compliance.

CONCEPTUAL RENDERING

PROPOSED LANDSCAPE PLAN  
3701 PACIFIC BLVD. LONG BEACH, CA



07.17.2020

PAGE  
11



This conceptual design is based upon a preliminary review of entitlement requirements and on unverified and possibly incomplete site and/or building information, and is intended merely to assist in exploring how the project might be developed. Signage shown is for illustrative purposes only and does not necessarily reflect municipal code compliance.

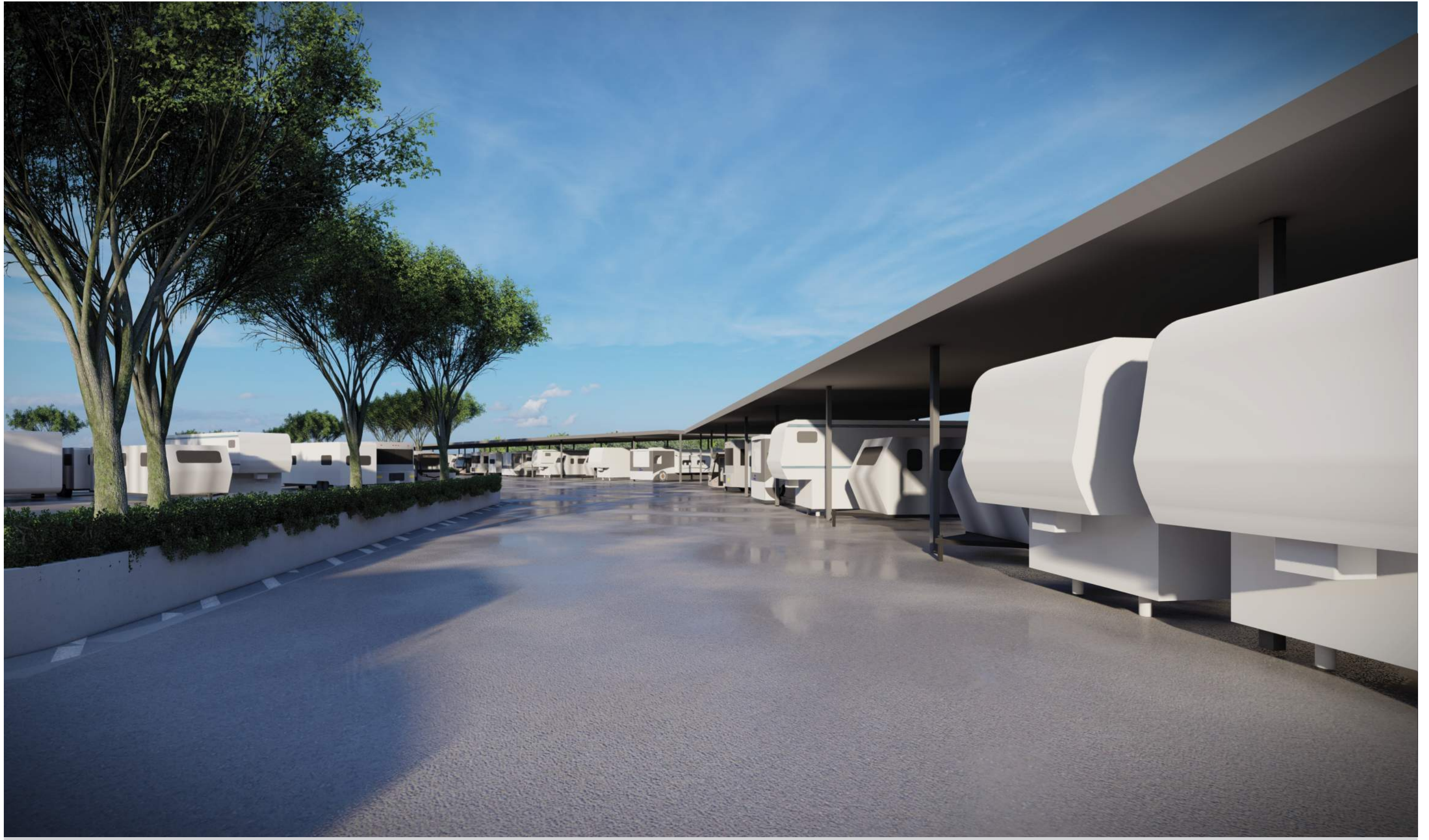
CONCEPTUAL RENDERING

PROPOSED LANDSCAPE PLAN  
3701 PACIFIC BLVD. LONG BEACH, CA



07.17.2020

PAGE  
12



This conceptual design is based upon a preliminary review of entitlement requirements and on unverified and possibly incomplete site and/or building information, and is intended merely to assist in exploring how the project might be developed. Signage shown is for illustrative purposes only and does not necessarily reflect municipal code compliance.

CONCEPTUAL RENDERING

PROPOSED LANDSCAPE PLAN  
3701 PACIFIC BLVD. LONG BEACH, CA



07.17.2020

PAGE  
13



This conceptual design is based upon a preliminary review of entitlement requirements and on unverified and possibly incomplete site and/or building information, and is intended merely to assist in exploring how the project might be developed. Signage shown is for illustrative purposes only and does not necessarily reflect municipal code compliance.

CONCEPTUAL RENDERING

PROPOSED LANDSCAPE PLAN  
3701 PACIFIC BLVD. LONG BEACH, CA



07.17.2020

PAGE  
14



This conceptual design is based upon a preliminary review of entitlement requirements and on unverified and possibly incomplete site and/or building information, and is intended merely to assist in exploring how the project might be developed. Signage shown is for illustrative purposes only and does not necessarily reflect municipal code compliance.

CONCEPTUAL RENDERING

PROPOSED LANDSCAPE PLAN  
3701 PACIFIC BLVD. LONG BEACH, CA



07.17.2020

PAGE  
15