

R-20

March 2, 2021

HONORABLE MAYOR AND CITY COUNCIL
City of Long Beach
California

RECOMMENDATION:

Adopt a Resolution authorizing the City Manager, or designee, to submit a grant application to the California Department of Parks and Recreation for funding under the Statewide Park Development and Community Revitalization Program, for the first phases of the Drake Chavez Vision Plan Implementation Project and MacArthur Park Vision Plan Implementation Project (Projects); and, if awarded, execute all documents necessary to accept the funds in an amount up to \$8,500,000 for each Project, for a total grant funding amount of up to \$17,000,000 for the Projects. (Districts 1, 6)

DISCUSSION

On June 5, 2018, voters passed the Parks, Environment, and Water Bond (Proposition 68). Proposition 68 authorized \$4 billion in general obligation bonds for state and local parks. The measure required that between 15 and 20 percent of the bond funds, depending on the type of project, be dedicated to projects in communities with median household incomes less than 60 percent of the statewide average; that 60 percent threshold amounted to about \$39,980 in 2016. The largest amount of bond revenue, \$725 million, was earmarked for neighborhood parks in park-poor neighborhoods in accordance with the Statewide Park Development and Community Revitalization Act of 2008's competitive grant program. The California Department of Parks and Recreation (DPR) has notified applicants that \$395,300,000 will be distributed in this final round. Grant applications are due March 12, 2021 and grant awards are anticipated to be announced in September 2021.

The Parks, Recreation and Marine Department (PRM) is requesting approval to submit grant applications for two park projects that were submitted for the same grant in a previous round, but were unfunded: (1) Drake Chavez Vision Plan Implementation Project; and, (2) MacArthur Park Vision Plan Implementation Project.

Drake Chavez Vision Plan Implementation Project

In 2010, the Drake Chavez Greenbelt Master Plan was completed, following a series of stakeholder discussions and community meetings. This community engagement effort, and ultimately the Master Plan, focused on amassing properties for park purposes that would connect Cesar Chavez Park to Drake Park, through the development of wetlands and passive and active open space (Attachment A). The City had received a series of grants from the Safe Neighborhood Parks, Clean Water, Clean Air and Coastal Protection Bond Act of 2000 (Proposition 12), the Safe Drinking Water, Clean Water, Watershed Protection and Flood Protection Act (Proposition 13), the California Clean Water, Clean Air, Safe Neighborhood Parks, and Coastal Protection Act of 2002 (Proposition 40), and the

HONORABLE MAYOR AND CITY COUNCIL

March 2, 2021

Page 2

Redevelopment Agency Central Project Area Revenue Bond proceeds to purchase 1.20-acre property at 903 Fairbanks Avenue, the 5.05-acre Los Angeles Metropolitan Transportation Authority Bus Lot, and 8.9 acres previously owned by the Union Pacific Railroad Company (UPRR).

Since the completion of the Drake Chavez Master Plan in 2010, many new projects have begun to impact these future park parcels, including Long Beach Municipal Urban Stormwater Treatment Facility (LB MUST), the I710 Realignment Project proposed by California Department of Transportation, and the Shoemaker Bridge Replacement Project. The update to the Drake Chavez Vision Plan, approved by the City Council in July 2019, incorporates these new projects and new feedback from the community. The Drake Chavez Vision Plan serves as a visionary document to guide future improvements at the acquired, undeveloped park parcels as well as future improvements to Drake and Chavez Parks to address the needs of the community (Attachment B).

In 2016, the Los Angeles County Department of Parks and Recreation completed a Needs Assessment for parks throughout the region, including Long Beach, using indicators such as socioeconomics, public health, and land use. The Needs Assessment results showed that there are 1.65 park acres per 1,000 residents at Chavez Park, 1.98 park acres per 1,000 residents at Drake Park, and 22 percent of the population surrounding these parks need park space and are categorized as a critically underserved area. This competitive grant will provide an opportunity to develop an undeveloped park parcel into a multi-benefit project with new and renovated recreation features, and integration of environmental design features that would promote water conservation, reduce energy consumption, improve air quality, improve human health, and increase outdoor recreation opportunities. Funds awarded through Proposition 68 would fund projects designed to contribute to the success of the City's efforts to provide healthy and safe park spaces within underserved areas.

PRM partnered with the First Council District, Willmore Heritage Neighborhood Association, Communities with Power to Change, the nonprofit Kounkuey Design Initiative, and Public Health Advocates to conduct community engagement for the Drake Chavez Vision Plan. So far, these groups have conducted nine public workshops, and developed three community-sourced vision concepts for the park. The public workshops examined desired amenities, prioritized community feedback, and voted on top park improvement ideas. The Drake Chavez Vision Plan is a plan for future park investment, anticipated over a long-term horizon, which will be implemented incrementally over time as capital, maintenance, and operating resources allow.

PRM is requesting authorization to submit a grant application for the Drake Chavez Vision Plan Implementation Project to request \$8,500,000 in grant funds from the DPR for a variety of family oriented amenities, from passive to active, that promote physical health and well-being for all ages, including a perimeter running trail with mile markers; centralized active area with sport courts and outdoor fitness equipment; landscaped buffers, bioswales, and a community garden to mitigate noise for neighbors; outdoor performance and picnic area; and, a new accessible playground for ages 2 to 12, skate park, dog park, restrooms, site furnishings, and parking.

MacArthur Park Vision Plan Implementation Project

MacArthur Park is located at 1321 East Anaheim Street in the City's Sixth Council District and has never had a Master Plan for its development. To be eligible for Proposition 68 funding, the park

HONORABLE MAYOR AND CITY COUNCIL

March 2, 2021

Page 3

needed to demonstrate considerable engagement around a community-sourced vision. The MacArthur Park Vision Plan serves as a visionary document to guide future improvements to address the needs of the community (Attachment C). The community within a one-mile radius of MacArthur Park makes up about 17 percent of Long Beach's population, making it one of the most densely populated areas in the city. In this community, 69.6 percent of residents have limited language proficiency, compared to just 19.7 percent for Long Beach and 26.2 percent in Los Angeles County. In 2016, the Los Angeles County Department of Parks and Recreation completed a Needs Assessment for parks throughout the region, including Long Beach, using indicators such as socioeconomics, public health, and land use. The Needs Assessment results showed that 73 percent of the MacArthur Park community had a very high or high need for park space.

In 2019, PRM partnered with the Sixth Council District, neighborhood group AOC7, Friends of MacArthur Park, LANLT, and local nonprofit City Fabrick to conduct community engagement for a Vision Plan. So far, these groups have conducted 15 public workshops and stakeholder meetings, collected 205 park audits and community surveys, and gathered 17 community-sourced plans for the park. The public workshops examined desired amenities, prioritized community feedback and voted on top park improvement ideas. The MacArthur Park Vision Plan is a plan for future park investment, anticipated over a long-term horizon, which will be implemented incrementally over time as capital, maintenance, and operating resources allow.

PRM is requesting authorization to submit a grant application for the MacArthur Park Vision Plan Implementation Project to request \$8,500,000 in grant funds from the DPR to renovate the playground area and open grass area for a neighborhood sports field; add a perimeter walking/jogging trail, picnic area, shade structure, outdoor fitness equipment, outdoor seating; and add a community center addition for a lobby.

These two projects were determined to best fit Proposition 68 requirements and maximize competitiveness because they: (1) are located in a park-deficient area and serve identified populations needing access to open space; (2) are in an area with significant poverty; (3) have been developed from significant community engagement and community-based planning processes; and, (4) leverage partnerships with several local community or neighborhood-based associations. The two projects are also consistent with: (1) the City's 2003 Open Space and Recreation Element that adopted a citywide goal of 8 acres of parkland per 1,000 residents; (2) the County of Los Angeles' 2016 Countywide Comprehensive Parks and Recreation Needs Assessment; (3) the City's Economic Blueprint that identifies Quality of Life as a focus area with an objective to increase public parkland per 1,000 people with an emphasis on "park poor" areas; (4) Los Angeles River Master Plan; (5) the Long Beach RiverLink Plan developed by the City in 2003-2007; and, (6) the 2020 Long Beach Racial Equity and Reconciliation Initiative and Report.

These competitive grants will provide opportunities to: (1) expand a new park acreage as a part of the Drake Chavez Vision Plan; and, (2) renovate MacArthur Park into a multi-benefit project with new and renovated recreation features, and the integration of environmental design features that would promote water conservation, reduce energy consumption, improve air quality, improve health, and increase outdoor recreation opportunities. Funds awarded through Proposition 68 would fund projects designed to contribute to the success of the City's efforts to provide healthy and safe park spaces within underserved areas.

This matter was reviewed by Deputy City Attorney Arturo D. Sanchez and by Revenue Management Officer Geraldine Alejo on February 9, 2021.

TIMING CONSIDERATIONS

City Council action is requested on March 2, 2021, to apply for the grant by the March 12, 2021 deadline.

FISCAL IMPACT

If awarded, the City will receive reimbursement grant funding up to \$8,500,000 for the Drake Chavez Vision Plan Implementation Project and up to \$8,500,000 for the MacArthur Park Vision Plan Implementation Project. Grant funding will be used to support various park improvements as part of the first phase to implementing the Drake Chavez and MacArthur Park vision plans. The total project cost associated with the first phase of vision plan implementation is estimated at \$8,500,000 per project, which includes construction contingency, design, construction support, labor compliance, and related project oversight. The grants do not require matching funds or in-kind services. Upon grant award and prior to project initiation, the Parks, Recreation and Marine Department will return with a request for appropriation, offset by grant revenue.

Following project completion, the Parks, Recreation and Marine Department will be responsible for ongoing operating and maintenance costs for both parks. The total estimated cost is unknown at this time and will be estimated based on the project scope. Funding for ongoing costs have not yet been identified and are currently unbudgeted. The department will return with a request for appropriation as part of the budget process. This recommendation has no staffing impact beyond the normal budgeted scope of duties and is consistent with existing City Council priorities. This recommendation will result in a positive impact on jobs, although the exact number is unknown at this time.

SUGGESTED ACTION:

Approve recommendation.

Respectfully submitted,



BRENT DENNIS
DIRECTOR OF PARKS, RECREATION AND MARINE

APPROVED:



THOMAS B. MODICA
CITY MANAGER

- ATTACHMENTS:
- Resolution
 - A) Drake Chavez Master Plan (2010)
 - B) Drake Chavez Vision Plan (2019)
 - C) MacArthur Park Vision Plan (2019)

1
2
3
4
5
6
7
8
9
10
11
12
13
14
15
16
17
18
19
20
21
22
23
24
25
26
27
28

RESOLUTION NO.

A RESOLUTION OF THE CITY COUNCIL OF THE
CITY OF LONG BEACH APPROVING THE APPLICATION
FOR STATEWIDE PARK DEVELOPMENT AND
COMMUNITY REVITALIZATION PROGRAM GRANT
FUNDS

WHEREAS, the State Department of Parks and Recreation has been
delegated the responsibility by the Legislature of the State of California for the
administration of the Statewide Park Development and Community Revitalization Grant
Program, setting up necessary procedures governing the application; and

WHEREAS, said procedures established by the State Department of Parks
and Recreation require the applicant to certify by resolution the approval of the
application before submission of said application to the State; and

WHEREAS, successful applicants will enter into a contract with the State of
California to complete the Grant Scope project;

NOW, THEREFORE, the City Council of the City of Long Beach resolves as
follows:

Section 1. Approves the filing of applications for the Drake Chavez
Vision Plan Implementation Project and the MacArthur Park Vision Plan Implementation
Project.

Section 2. Certifies that the City of Long Beach (“Applicant”) has or will
have available, prior to commencement of any work on the projects included in this
application, sufficient funds to complete the projects.

Section 3. Certifies that if the projects are awarded, Applicant has or will
have sufficient funds to operate and maintain the projects.

Section 4. Certifies that Applicant has reviewed, understands, and

1 agrees to the General Provisions contained in the contract shown in the Grant
2 Administration Guide.

3 Section 5. Delegates the authority to the City Manager or designee to
4 conduct all negotiations, sign and submit all documents, including, but not limited to
5 applications, agreements, amendments, and payment requests, which may be necessary
6 for the completion of the Grant Scope.

7 Section 6. Agrees to comply with all applicable federal, state and local
8 laws, ordinances, rules, regulations and guidelines.

9 Section 7. Will consider promoting inclusion per Public Resources Code
10 §80001(b)(8 A-G).

11 Section 8. This resolution shall take effect immediately upon its adoption
12 by the City Council, and the City Clerk shall certify the vote adopting this resolution.

13 I hereby certify that the foregoing resolution was adopted by the City
14 Council of the City of Long Beach at its meeting of _____, 2021
15 by the following vote:

16
17 Ayes: Councilmembers: _____
18 _____
19 _____
20 _____

21 Noes: Councilmembers: _____
22 _____

23 Absent: Councilmembers: _____
24 _____

25 Recusal(s): Councilmembers: _____
26 _____

27
28 _____
City Clerk



LEGEND

A CESAR CHAVEZ PARK AND GREENBELT LINK

- 1 - 2 - 3 - 4 - 5 - 6 - 7 - 8 - 9

B THE BOARDWALK

- 1 - 2 - 3 - 4 - 5 - 6 - 7 - 8 - 9

C COMMUNITY & URBAN NATURE CENTER

- 1 - 2 - 3 - 4 - 5 - 6 - 7 - 8 - 9

D WETLANDS

- 1 - 2 - 3 - 4 - 5 - 6 - 7 - 8 - 9

E COMMUNITY GARDENS

- 1 - 2 - 3 - 4 - 5 - 6 - 7 - 8 - 9

F DE FOREST AVENUE NATURE CENTER

- 1 - 2 - 3 - 4 - 5 - 6 - 7 - 8 - 9

G GREENBELT DOWNTOWN TRAIL LINK

- 1 - 2 - 3 - 4 - 5 - 6 - 7 - 8 - 9

H PARKWAY

- 1 - 2 - 3 - 4 - 5 - 6 - 7 - 8 - 9

I DRAKE PARK

- 1 - 2 - 3 - 4 - 5 - 6 - 7 - 8 - 9

J RECREATION FIELDS

- 1 - 2 - 3 - 4 - 5 - 6 - 7 - 8 - 9

K LOMA VISTA CORRIDOR

- 1 - 2 - 3 - 4 - 5 - 6 - 7 - 8 - 9

SYMBOL DESCRIPTION

- LOS ANGELES RIVER TRAIL
- LOS ANGELES TRAIL SYSTEM ACCESS
- PEDESTRIAN ACCESS
- PICNIC SHELTER
- RESTROOM
- PEDESTRIAN BRIDGE CROSSING
- PUMP HOUSE

GREENBELT ACREAGE - 58.42

PARK PROPERTY	ACRES	ACQUIRED PROPERTY	ACRES
1. CESAR CHAVEZ PARK	29.21	3. CERAMICS FACTORY	1.20
2. DRAKE PARK	6.61	4. WTA SITE	5.10
		5. DE FOREST RIGHT OF WAY	6.80
		6. UNION PACIFIC RAILROAD	7.80
		7. DE FOREST AVENUE	0.20
		8. LOMA VISTA PARK	0.20
		9. OTHER PROPERTIES	4.00

GREENBELT USE AREA MAP

PARKING

LOCATION	STANDARD PARKING	TOILET PARKING	BIKE PARKING
COMMUNITY & URBAN NATURE CENTER	79	4	3
DRAKE PARK	102	5	5
COMMUNITY GARDENS	37	2	2
CESAR CHAVEZ PARK, STREET	76	4	4
DE FOREST AVENUE	33	2	2
LOMA VISTA DRIVE	34	1	1
RECREATION FIELDS	409	21	3
TOTAL PARKING SPACES			

LEGEND

A CESAR CHAVEZ PARK AND GREENBELT LINK

- 1 - 2 - 3 - 4 - 5 - 6 - 7 - 8 - 9

B THE BOARDWALK

- 1 - 2 - 3 - 4 - 5 - 6 - 7 - 8 - 9

C COMMUNITY & URBAN NATURE CENTER

- 1 - 2 - 3 - 4 - 5 - 6 - 7 - 8 - 9

D WETLANDS

- 1 - 2 - 3 - 4 - 5 - 6 - 7 - 8 - 9

E COMMUNITY GARDENS

- 1 - 2 - 3 - 4 - 5 - 6 - 7 - 8 - 9

F DE FOREST AVENUE NATURE CENTER

- 1 - 2 - 3 - 4 - 5 - 6 - 7 - 8 - 9

G GREENBELT DOWNTOWN TRAIL LINK

- 1 - 2 - 3 - 4 - 5 - 6 - 7 - 8 - 9

H PARKWAY

- 1 - 2 - 3 - 4 - 5 - 6 - 7 - 8 - 9

I DRAKE PARK

- 1 - 2 - 3 - 4 - 5 - 6 - 7 - 8 - 9

J RECREATION FIELDS

- 1 - 2 - 3 - 4 - 5 - 6 - 7 - 8 - 9

K LOMA VISTA CORRIDOR

- 1 - 2 - 3 - 4 - 5 - 6 - 7 - 8 - 9

DRAKE CHAVEZ VISION PLAN

JULY 16, 2019



CONTEXT MAPS FROM MEETING #1

MAPAS CONTEXTUALES DE JUNTA #1

A community process was conducted in the early 2000s to create the Drake Chavez Master Plan.

Hubo un proceso comunitario en los años 2000 para crear el Plan Maestro Drake Chavez.

Since that time, several new projects have been planned for the area, including:

Desde ese entonces, se han planeado varios proyectos nuevos para el área, incluyendo:

1. The Long Beach Municipal Urban Stormwater Facility (LB-MUST) and associated wetlands
Instalaciones de Tratamiento de Aguas Pluviales Urbanas Long Beach (LB-MUST) y humedales asociadas
2. A Shoemaker Bridge realignment to the south of its current location, which will place Shoreline Drive closer to the river and make new areas of Chavez Park accessible to the community
Realineación del Puente Shoemaker al sur de su ubicación presente, lo cual colocará a Shoreline Drive junto al río y hará nuevas áreas del Parque Chavez accesibles a la comunidad
3. An I-710 realignment to the south of Chavez Park (details still forthcoming)
Realineación del I-710 al sur del Chavez Park (detalles en preparación)

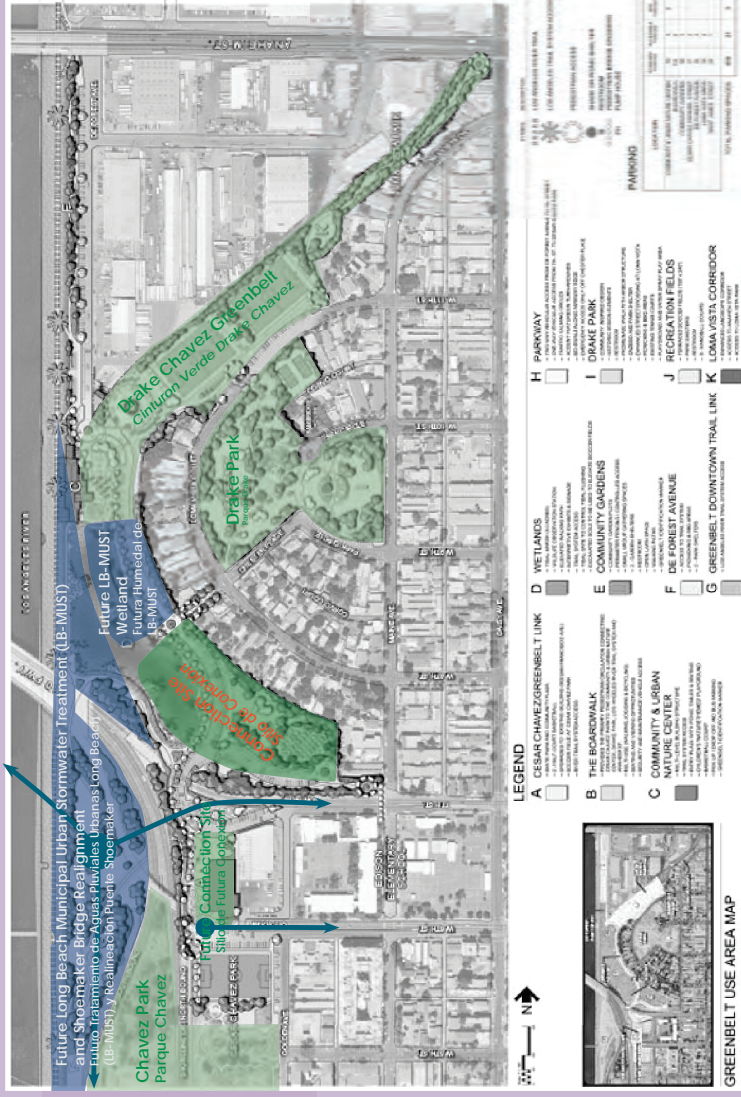
We are now updating the Master Plan to apply for a grant from the Statewide Parks Program (SPP) to develop the city-owned MTA lot into a new park!

Estamos actualizando el Plan maestro para aplicar a una subvención del Programa Estatal de Parques (SPP) para desarrollar el lote MTA en un nuevo parque!

Original Drake Chavez Master Plan (2009)



Updates + New Projects in the Area



SURVEY RESULTS

RESULTADOS DEL CUESTIONARIO

We conducted a survey with residents over the course of a month to see what priorities the community had for the new park space. This is what we heard.

Administramos un cuestionario con residentes durante un mes para ver cuales prioridades tiene la comunidad para el nuevo espacio del parque. Esto es lo que escuchamos.

TOP 5 PRIORITIES TO GUIDE THE DESIGN PROCESS?

5 MAYORES PRIORIDADES PARA GUIAR EL PROCESO DE DISEÑO

1	 SAFETY	SEGURIDAD
2	 EDUCATION	EDUCACIÓN
3	 HEALTH	SALUD
4	 EQUITY	EQUIDAD
5	 SUSTAINABILITY	SUSTENTABILIDAD

TOP 5 USER GROUPS TO BE MOST MINDFUL OF IN THE DESIGN

5 MAYORES GRUPOS DE USUARIOS DE QUIENES SER MÁS CONSCIENTES EN EL DISEÑO DEL PARQUE

1	FAMILIES	FAMILIAS
2	CHILDREN	NIÑOS
3	ACCESSIBILITY	ACCESIBILIDAD
4	SENIORS	GENTE MAYOR
5	TEENS	ADOLESCENTES

TOP 10 PROGRAMS FOR THE NEW PARK SPACE

10 MAYORES PROGRAMAS PARA EL NUEVO ESPACIO DEL PARQUE

1	EDUCATION	EDUCACIÓN
2	ARTS	ARTES
3	COOKING	COCINA
4	CULTURE	CULTURA
5	SPORTS	DEPORTES
6	TEEN / AFTER SCHOOL	ADOLESCENTES
7	TECHNOLOGY	TECNOLOGÍA
8	SENIOR	GENTER MAYOR
9	DANCE	BAILE
10	MUSIC	MÚSICA

TOP 10 AMENITIES FOR THE NEW PARK SPACE

10 MAYORES ELEMENTOS PARA EL NUEVO ESPACIO DEL PARQUE

1	BATHROOMS	BAÑOS
2	PLAYGROUND	JUEGOS PARA NIÑOS
3	WALKING / JOGGING TRAILS	CAMINOS
4	SPORTS FIELD	CAMPO DE DEPORTES
5	COMMUNITY CENTER	CENTRO COMUNITARIO
6	COMMUNITY GARDEN	JARDÍN COMUNITARIO
7	COMMUNITY ART / MURALS	ARTE COMUNITARIO / MURALES
8	OUTDOOR FITNESS EQUIPMENT	MAQUINAS DE EJERCISIO
9	SHADE STRUCTURES	ESTRUCTURAS DE SOMBRA
10	DOG PARK	ESPACIO PARA PERROS

DRAFT CONCEPTS FROM WORKSHOP #4

CONCEPTOS BORRADOR DE TALLER #4

CONCEPT 1

ECOLOGICAL THINK-TANK

Large expanses of open space that are both inviting and educational.

KEY FEATURES:

1. Large amount of open space to serve as an outdoor learning space of all things ecological
2. Community gardens and dog park
3. Winding paths and tracks for recreation
4. Green buffers on the perimeter of site to protect home owners from noise

BUILDINGS:

1. Community Center from renovated MTA Building
2. Bahati building to be retained for possible future renovation, with open green spaces added

AMENITIES INCLUDED:

- Restrooms
- Hydration station
- Parking lot
- Walking and running paths
- Open grass area
- Community garden
- Playground
- Picnic area with shade
- Indoor sports center
- Basketball court
- Volleyball court
- Exercise equipment
- Skate park
- Dog park
- Community center
- Outdoor classroom
- Outdoor performance space

CONCEPTO 1

LABORATORIO ECOLÓGICO

Grandes áreas de espacio abierto que son tanto cómodas como educacionales.

CARACTERÍSTICAS PRINCIPALES:

1. Gran cantidad de espacio abierto para el aprendizaje de temas ecológicos
2. Jardines comunitarios y parque para perros
3. Caminos serpenteantes para caminar y correr
4. Zonas verdes en el perímetro del sitio para proteger a los vecinos del ruido

EDIFICIOS:

1. Edificio MTA renovado como un centro comunitario
2. Edificio Bahati se preserva para una posible renovación futura, con espacios verdes abiertos añadidos

ELEMENTOS INCLUIDOS:

- Baños
- Estación de hidratación
- Estacionamiento
- Caminos para correr y caminar
- Área verde
- Jardín comunitario
- Juegos para niños
- Área de picnic con sombra
- Centro de deportes bajo techo
- Cancha de basquetbol
- Cancha de voleibol
- Máquinas de ejercicio
- Parque de patinaje
- Parque para perros
- Centro comunitario
- Salón al aire libre
- Escenario al aire libre



DRAFT CONCEPTS FROM WORKSHOP #4

CONCEPTOS BORRADOR DE TALLER #4

CONCEPT 2

THE HANGOUT

A safe space for youth and teens with amenities ranging from sport courts to performance spaces.

KEY FEATURES:

1. Large flexible space for performances or other outdoor passive activities
2. Opportunity for community members to organize, design, and maintain a large community garden.

BUILDINGS:

1. MTA Building to be retained for bathroom use
2. Bahati building renovated as an indoor sports complex

AMENITIES INCLUDED:

- Restrooms
- Hydration station
- Parking lot
- Walking and running paths
- Open grass area
- Community garden
- Playground
- Picnic area with shade
- Indoor sports center
- Basketball court
- Volleyball court
- Exercise equipment
- Skate park
- Dog park
- Community center
- Outdoor classroom
- Outdoor performance space

CONCEPTO 2

PUNTO DE REUNIÓN

Un espacio seguro para jóvenes y adolescentes con elementos deportivos hasta espacios multiusos al aire libre.

CARACTERÍSTICAS PRINCIPALES:

1. Amplio espacio flexible para actuaciones u otras interpretaciones al aire libre
2. Oportunidad para que los miembros de la comunidad organicen, diseñen y mantengan un gran jardín comunitario

EDIFICIOS:

1. Edificio MTA se mantiene para uso del baño
2. Edificio Bahati renovado como un centro de deportes bajo techo

ELEMENTOS INCLUIDOS:

- Baños
- Estación de hidratación
- Estacionamiento
- Caminos para correr y caminar
- Área verde
- Jardín comunitario
- Juegos para niños
- Área de picnic con sombra
- Centro de deportes bajo techo
- Cancha de basquetbol
- Cancha de voleibol
- Máquinas de ejercicio
- Parque de patinaje
- Parque para perros
- Centro comunitario
- Salón al aire libre
- Escenario al aire libre



DRAFT CONCEPTS FROM WORKSHOP #4

CONCEPTOS BORRADOR DE TALLER #4

CONCEPT 3

THE PLAYGROUND

A variety of family oriented amenities, from passive to active, that promote physical health and well-being for all ages.

KEY FEATURES:

1. Running trail with mile markers around the site
2. Centralized active area with sport courts and exercise machines
3. Green amenities along east and north property line to mitigate noise for neighbors

BUILDINGS:

1. MTA Building to be retained for bathroom use
2. Bahati building to be retained for possible future renovation, with open green spaces added

AMENITIES INCLUDED:

- Restrooms
- Hydration station
- Parking lot
- Walking and running paths
- Open grass area
- Community garden
- Playground
- Picnic area with shade
- Indoor sports center
- Basketball court
- Volleyball court
- Exercise equipment
- Skate park
- Dog park
- Community center
- Outdoor classroom
- Outdoor performance space

CONCEPTO 3

LOS JUEGOS

Variedad de servicios orientados a la familia, desde pasivos hasta activos, que promueven la salud física y el bienestar para todas las edades.

CARACTERÍSTICAS PRINCIPALES:

1. Pista para correr alrededor del sitio con marcadores de millas
2. Zona activa centralizada con canchas deportivas y máquinas de ejercicio
3. Espacios verdes a lo largo del perímetro este y norte para mitigar el ruido para vecinos

EDIFICIOS:

1. Edificio MTA se mantiene para uso del baño
2. Edificio Bahati se preserva para una posible renovación futura, con espacios verdes abiertos añadidos

ELEMENTOS INCLUIDOS:

- Baños
- Estación de hidratación
- Estacionamiento
- Caminos para correr y caminar
- Área verde
- Jardín comunitario
- Juegos para niños
- Área de picnic con sombra
- Centro de deportes bajo techo
- Cancha de basquetbol
- Cancha de voleibol
- Máquinas de ejercicio
- Parque de patinaje
- Parque para perros
- Centro comunitario
- Salón al aire libre
- Escenario al aire libre



MACARTHUR PARK VISION PLAN

CITY OF
LONG BEACH



About the Vision Plan

Existing Conditions

Community Engagement

Vision Plan Concepts

Next Steps

**THE MACARTHUR PARK
VISION PLAN STRATEGICALLY
GUIDES FUTURE INVESTMENTS
AND IMPROVEMENTS TO
MAXIMIZE IMPACT AND BEST
SERVE THE COMMUNITY.**

ABOUT THE MACARTHUR PARK VISION PLAN



The City of Long Beach and several local community organizations have partnered to pursue California Proposition 68 grant funding to renovate MacArthur Park.



WHAT IS PROP 68?

Proposition 68 authorized \$4 billion in general obligation bonds for state and local parks, environmental protection and restoration projects, water infrastructure projects, and flood protection projects. **A robust public outreach process results in a more competitive application.**

Timeline



Includes Outreach to:
MacArthur Park Steering Committee
Local Stakeholder Groups

Existing Conditions Analysis

ENVIRONMENTAL HEALTH DATA

- CalEnviroScreen 3.0
- LA County Public Health

DEMOGRAPHIC TRENDS

- US Census

PHYSICAL CONDITIONS

- Park Audits
- LA County Needs Assessment
- Park Score + Walk Score

RELEVANT PLANNING EFFORTS

- Open Space Element
- PRM Strategic Plan
- Mobility Element
- Bicycle Master Plan
- CX3 Pedestrian Plan
- Anaheim Streetscape Plan
- Re-Imagining the Civic Commons

MACARTHUR PARK MASTER PLAN PARK AUDIT

AUDITOR INFO:
 FULL NAME: _____
 EMAIL OR PHONE: _____
 DATE OF VISIT: _____
 WEATHER: Clear Cloudy Rain
 TIME OF DAY: Morning Afternoon Around Noon Evening



Thank you for helping with the MacArthur Park Master Plan Park Audit!
 Before you begin, please read the following instructions:
 As you complete the audit, make sure to follow all traffic rules. Your safety is important to us, please stop the survey if you feel unsafe. If you are in the park during the evening, please take extra precaution and take a friend with you as well.

Also, consider the needs of others who live in the neighborhood and not just yourself. This can include young children, elders, people on wheelchairs, parents with strollers, etc.

PARK ACCESSIBILITY CHECKLIST

Circle the condition that best represents your experience using the following indicators:
 Elements in **GOOD** condition offer full functionality and do not need repairs and may have minor cosmetic defects
 Elements in **FAIR** condition are largely functional but need minor or moderate repairs and remain important
 Elements in **POOR** condition are largely or completely unusable and they need major repairs to be functional,
 To help you choose a rating, there is a checklist that you must fill out, and based on what you checkmark, your score should reflect which condition you choose.

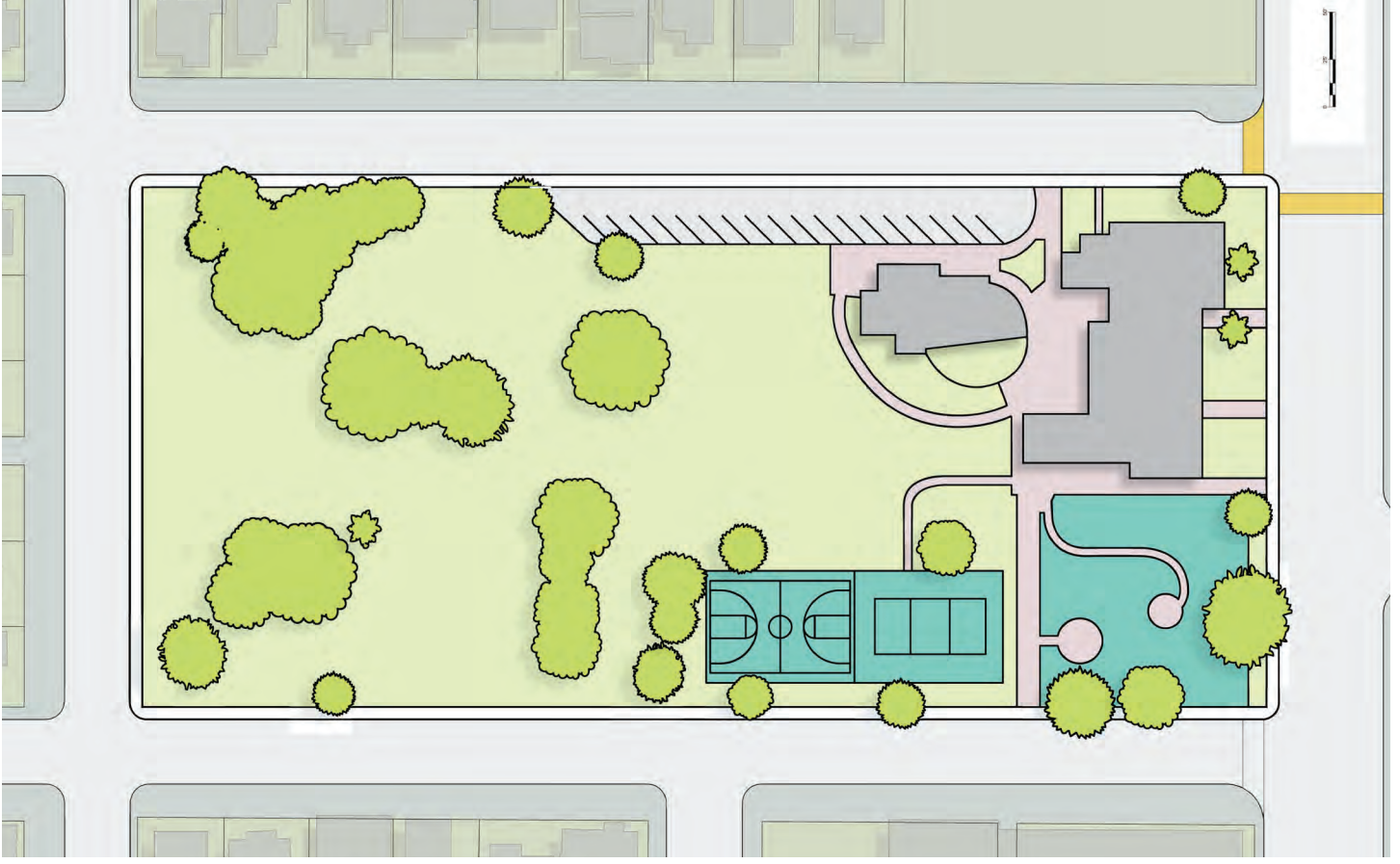
1. Was it easy to cross streets?

CIRCLE RATING BELOW		
GOOD	FAIR	POOR
Checkmark / if applicable:		
— Road was too wide		
— Traffic signals made us wait too long		
— Needs crosswalk or crosswalk repainting		
— Need curb ramps or ramps need repair		
— Something else _____		

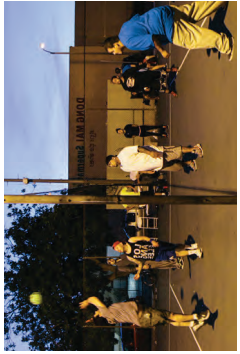
2. Did you have room to walk?

CIRCLE RATING BELOW		
GOOD	FAIR	POOR
Checkmark / if applicable:		
— No sidewalks, paths or shoulders		
— Sidewalks were broken or cracked		
— Sidewalks were blocked with litter, poles, etc.		
— Something else _____		

ACCESS TO THE PARK



Existing Conditions



Demographic Study

Study Area: One-mile radius around MacArthur Park

Population

6% Rise (2000-2010)

81,073 people live in the study area (17% of city population)



Families

2% Fall (2000-2010)

9,009 Family households with children under 18



Age

5% Rise (2000-2010)

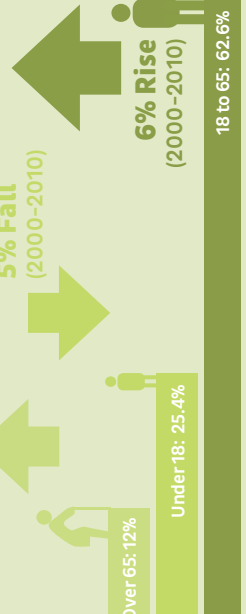
5% Fall (2000-2010)

6% Rise (2000-2010)


18 to 65: 62.6%

Over 65: 12%

Under 18: 25.4%



Emissions



37.77 kg/day Diesel Particulate Matter & **11.30 ug/m3** Particulate Matter 2.5

Risk of heart & lung disease, irregular heartbeat, asthma decreased lung function, and other serious issues

Asthma Rates

98th percentile of people with high asthma rates

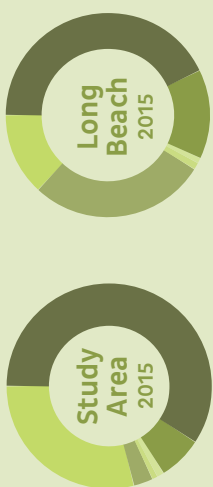


Vehicle Access

19% of households do not have access to a vehicle



Diversity



- Latino
- African American
- White
- Asian
- Native American
- Hawaiian/Pacific Islander

Foreign Born

37% Study Area

26.8% Long Beach

35.1% LA County

Language Isolation

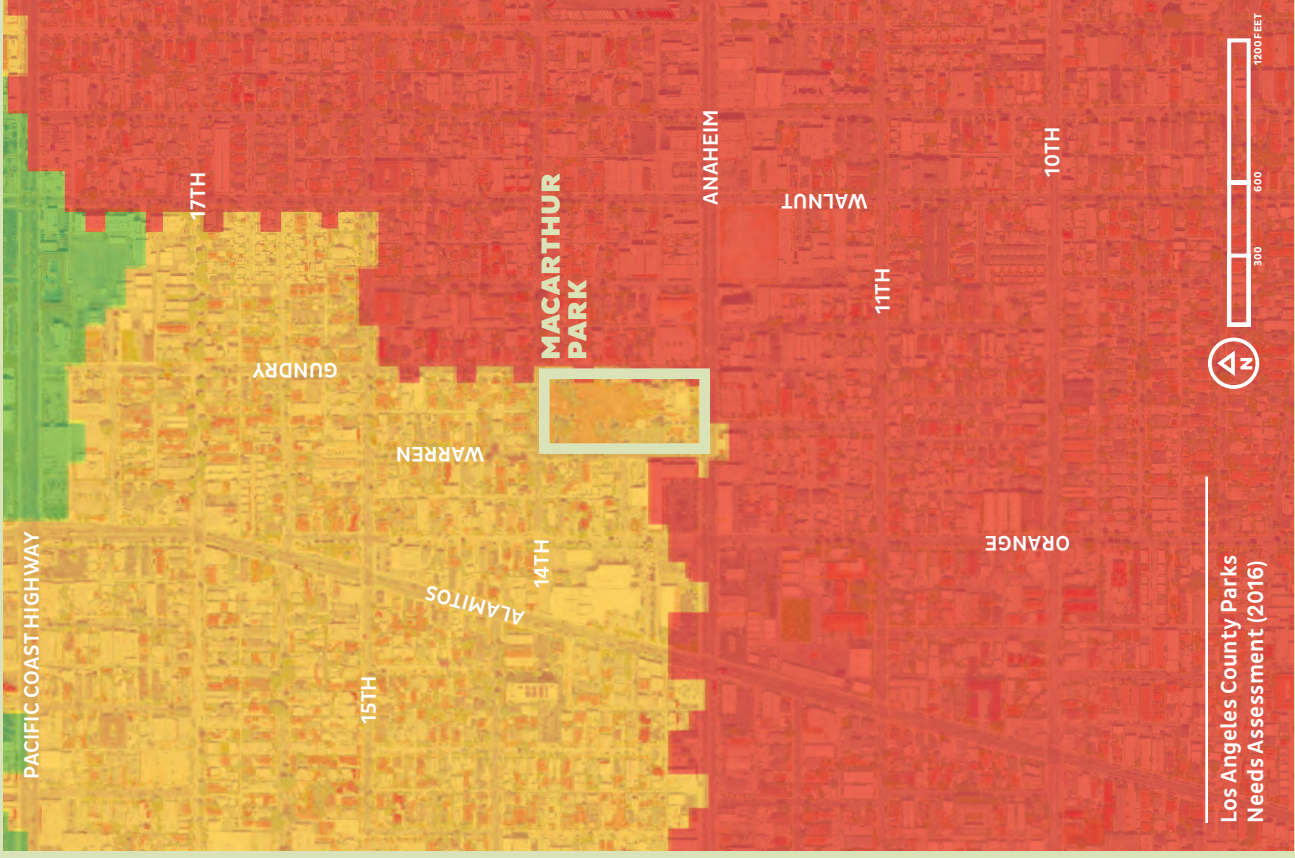
70% Study Area

19.7% Long Beach

26.2% LA County

Park Need

HOW MANY PEOPLE NEED PARKS?



Community Engagement



15
Public Workshops
& Stakeholder Meetings

+

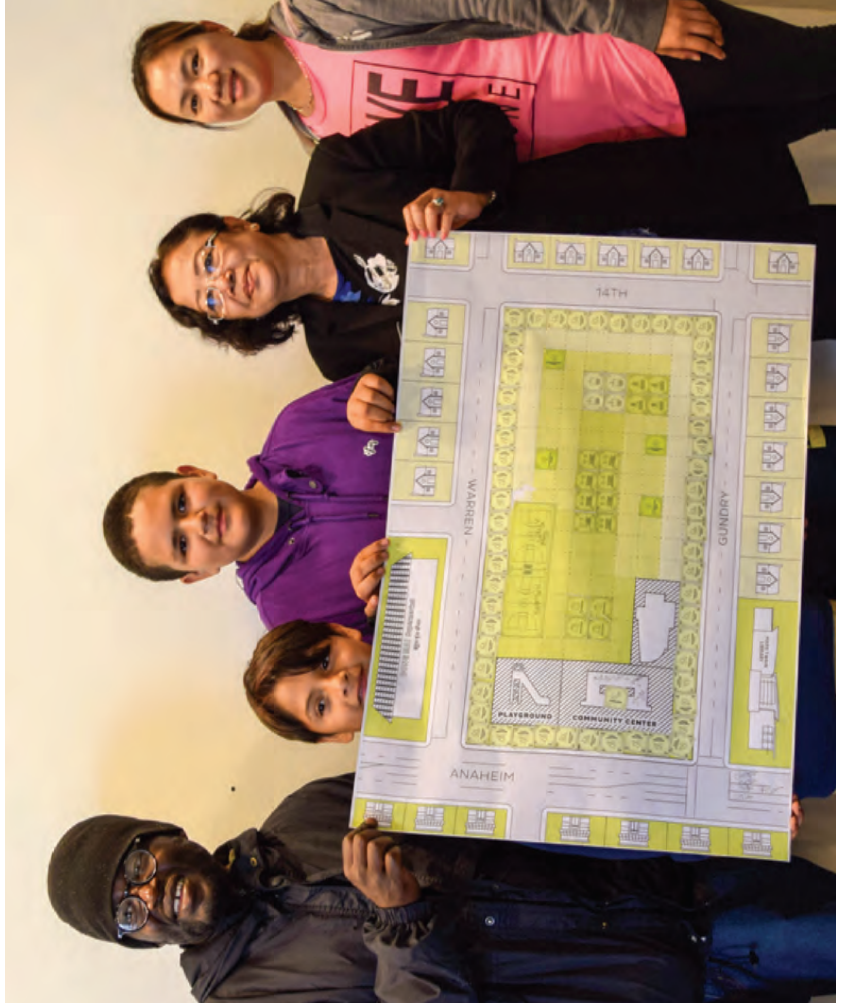
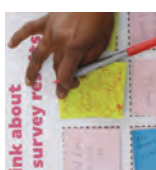


205
Park Audits &
Community Surveys

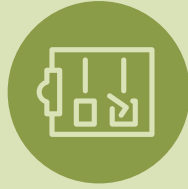
=



17
Park Ideas Created
by the Community



Community Survey



PURPOSE

Understand the types of improvements community members want to see happen for MacArthur Park.

METHODOLOGY

Distribute surveys in Khmer, Spanish, and English both at community workshops and in the park.

NUMBER OF PARTICIPANTS

205

OUTCOMES

- Community-identified guiding principles
- Understanding of the types of park improvements and amenities community members would like to have.
- Understanding the types of park programs that community members would like to have.



Community Survey

1. THE LARGEST NUMBER OF PEOPLE WHO VISIT MACARTHUR PARK DO SO ON WEEKLY BASIS.

30% of survey respondents frequently visit the park.



2. MACARTHUR PARK VISITORS “GENERALLY” FIND IT CONVENIENT TO GET HERE.

Several people lived close by and just walked, bicycled or took public transit. Parking was also brought up as a reason why it is convenient.



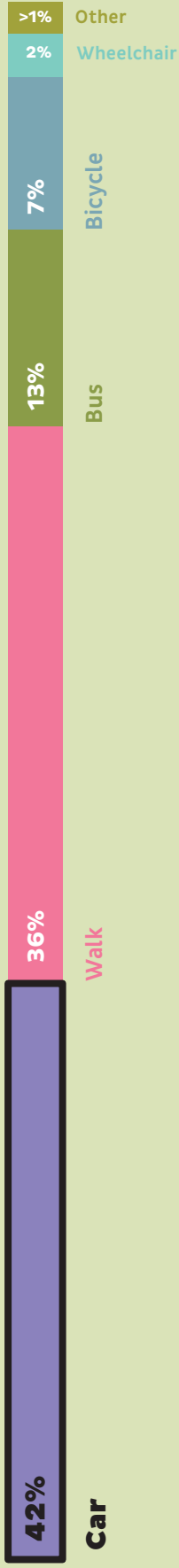
3. PEOPLE VISIT MACARTHUR PARK AT VARIOUS TIMES OF THE DAY.

The majority of respondents visit the park in the afternoon and evenings, when there are events and programs, but people also visit in the morning and afternoon.



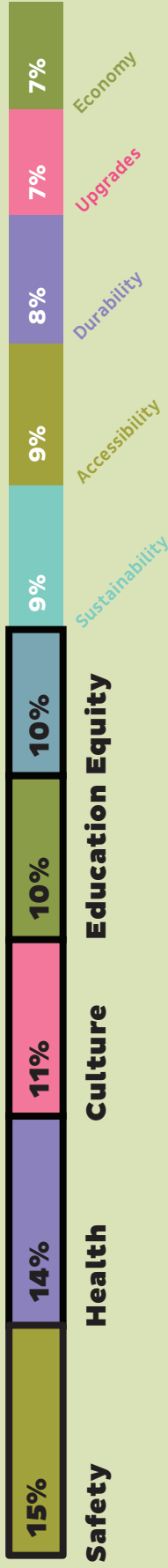
4. A LARGER NUMBER OF PEOPLE ARRIVE ON FOOT, BUS, AND BIKE, RELATIVE TO TYPICAL TRIP-TYPE ACROSS THE CITY.

The park serves the needs of the local and larger Long Beach community.



5. THE TOP FIVE PRIORITIES FOR THE PLANNING AND DESIGN OF MACARTHUR PARK SHOULD BE SAFETY, HEALTH, CULTURE, EDUCATION, AND EQUITY.

Sustainability, accessibility, durability, upgrades, and economy were not as important to the community.



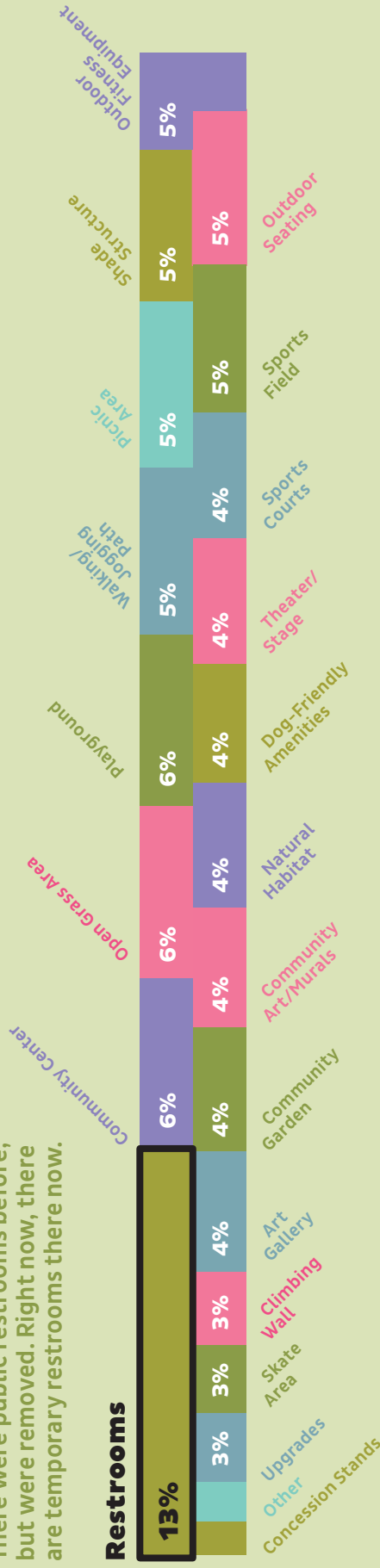
6. WE SHOULD BE MINDFUL OF ALL GROUPS OF PEOPLE, INCLUDING THOSE EXPERIENCING HOMELESSNESS.

Families, children, people experiencing homelessness are the top groups to be mindful of when designing the park.



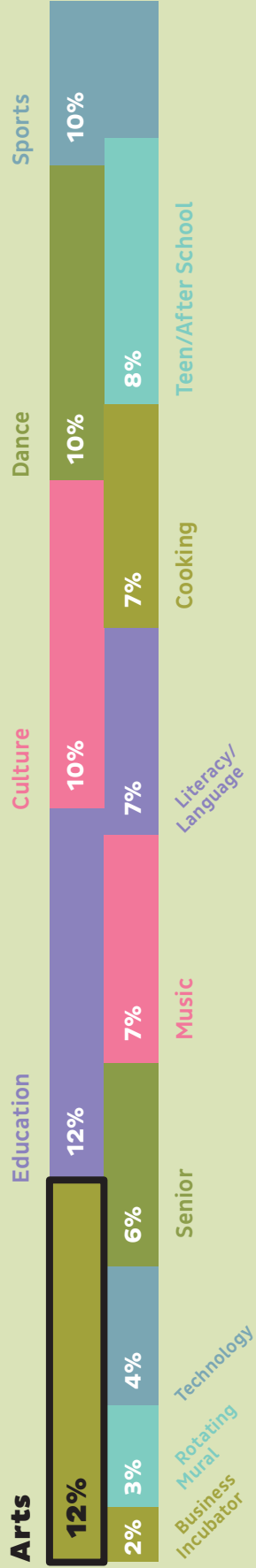
7. THE TOP TEN AMENITIES THAT COMMUNITY MEMBERS WANTED TO SEE/KEEP AT MACARTHUR PARK ARE BATHROOMS, COMMUNITY CENTER, OPEN GRASS AREA, PLAYGROUND AREA, WALKING/JOGGING TRAIL, PICNIC AREA, SHADE STRUCTURE, OUTDOOR FITNESS EQUIPMENT, OUTDOOR SEATING, AND SPORTS FIELD.

There were public restrooms before, but were removed. Right now, there are temporary restrooms there now.



8. THE TOP FIVE PROGRAMS THAT COMMUNITY MEMBERS WANTED TO SEE/KEEP AT MACARTHUR PARK ARE ARTS, EDUCATION, CULTURE, DANCE, AND SPORTS.

Programming is one of MacArthur Park's best assets. We heard that the design should support the programs.



9. IN THE FUTURE, PEOPLE ENVISION THEMSELVES _____ AT MACARTHUR PARK.

Survey respondents said:



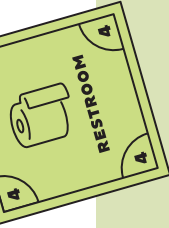
Active Use ■ Passive Use ■

10. MANY PEOPLE SAID THAT MACARTHUR PARK WAS THEIR FAVORITE PARK BASED ON CONVENIENCE, BUT WANT TO SEE IMPROVEMENTS HAPPEN.

Survey respondents said:



LA County ■ Signal Hill ■ Long Beach ■



Design Your Park Game



PURPOSE

Identify locations for potential park amenities
Educate community on real-life constraints such as equity, incompatible uses, and limited funding.

METHODOLOGY

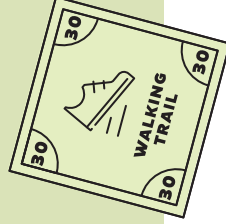
As a group, community members play a game where they role-play as a park designer, under constraints.

NUMBER OF WORKSHOPS

8 public and stakeholder workshops

OUTCOMES

- 17 park ideas identified by the community
- Identified park amenity needs
- Greater understanding of park planning



Refining Ideas



PURPOSE

- Prioritize ideas from first round of workshops.
- Develop three conceptual designs based on feedback.

METHODOLOGY

In small groups, facilitate discussion about the three conceptual designs to develop one final design.

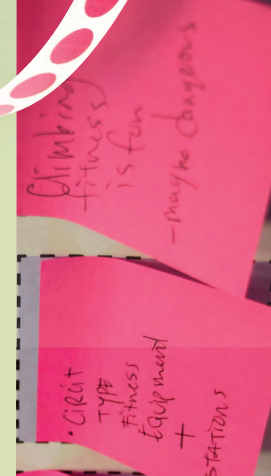
NUMBER OF WORKSHOPS

7 public workshops

OUTCOMES

- A final conceptual design as led by the community
- Material needed for Prop 68 funding application
- Greater understanding of park planning

LOCAL
↕
DESTINATION



ATTACHMENT C
PARENT USER
PASSIVE ENGAGEMENT
OF THE PARENT
[PRO SON ON MY
HEAD]

• Climbing
fitness
is fun
- maybe Chango's

• Circuit
TYPE
Fitness
Equipment
+
STATIONS

• Site with
shaded
open spaces
• play area
• path of
some type

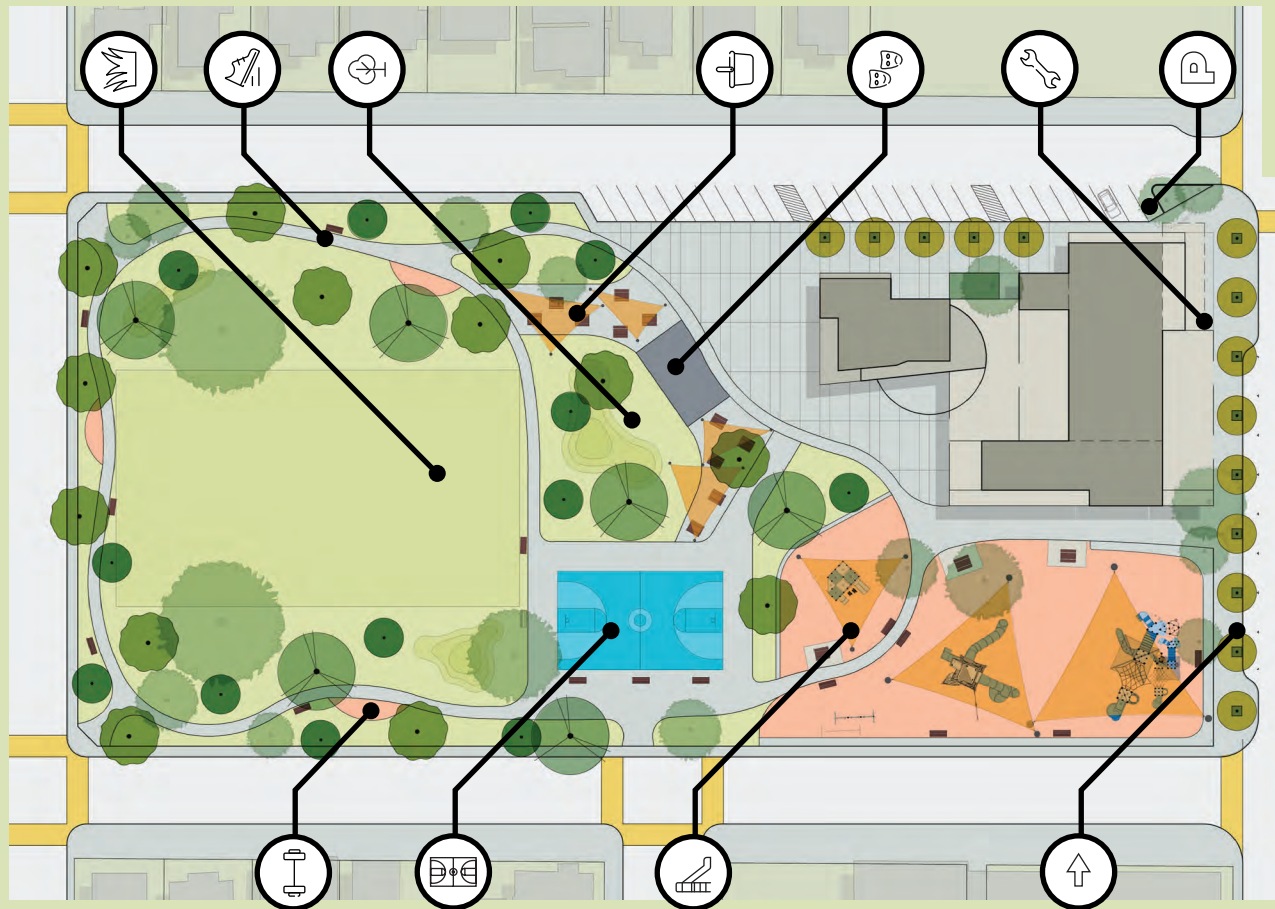
Vision Plan Concepts

COMMUNITY PRIORITIES

- 
 Safety
- 
 Health
- 
 Culture
- 
 Education
- 
 Equity

MAJOR PARK IMPROVEMENTS

Park Improvements	Priorities Met			
 Building + Restroom Upgrades				
 Walking Path				
 Open Grassy Area + Multi-Use Field				
 Outdoor Fitness Equipment				
 Picnic Area				
 Outdoor Stage + Art Gallery Space				
 Sports Court				
 Expanded Playground				
 Natural Planting Areas				
 Reconfigure Parking				
 Active Transportation Improvements				



* Concept also includes: bike rack, hydration stations, monument sign, wifi, park rules signs, sustainable lighting, benches, art elements, and security cameras.

Next Steps

COST ESTIMATES

Grassy areas including multi-use field	\$1.1M
Picnic areas with shade structures	\$0.7M
Expanded playground w/ fitness equipment, shade structures & safety surfacing	\$1.4M
Natural planting, trees & upgraded irrigation	\$1.0M
Site furnishings (lights, benches, drinking fountains, bike racks & signs)	\$1.35M
Hardscape features (entry plaza, walking path & outdoor stage)	\$1.5M
New restroom attached to existing building	\$0.3M
Move and reconstruct new parking area	\$1.0M
Install creative placemaking elements	\$0.15M
TOTAL	\$8.5M
Building & restroom upgrades	\$3.0M
Install active transportation improvements	\$0.25M
TOTAL	\$3.25M
GRAND TOTAL	\$11.75M

FUNDING AND IMPLEMENTATION

- Proposition 68
- Measure A
- Measure W
- Community Port Grant
- Capital Improvement Fund
- Cultural Philanthropy & Foundations



Thank You!



CITY OF
LONG BEACH