



CITY OF LONG BEACH

DEPARTMENT OF PUBLIC WORKS

C-16

333 WEST OCEAN BOULEVARD • LONG BEACH, CA 90802 • (562) 570-6383 • FAX (562) 570-6012

September 4, 2007

HONORABLE MAYOR AND CITY COUNCIL
City of Long Beach
California

RECOMMENDATION:

Authorize the City Manager to execute an easement for sanitary sewer purposes in favor of the Los Angeles County Sanitation District No. 3, in the vicinity of Fairbanks Avenue and Chester Place. (District 1)

DISCUSSION

To increase sewer capacity in the downtown Long Beach area, the Los Angeles County Sanitation District No. 3 (LACSD) constructed the De Forest Avenue Trunk Sewer along the route shown on the attached Exhibit A. The sewer route lies mainly within dedicated street rights-of-way or other areas to which LACSD holds easement rights. However, portions of the sewer line are located within other City property and an easement is now requested. The two proposed easement areas are shown on the attached Exhibit B.

The customary investigation was conducted involving public utilities and interested City departments and there were no objections to the proposed easement. In conformance with the California Environmental Quality Act, a Negative Declaration was prepared by LACSD for this project.

The subject grant of easement was reviewed by Deputy City Attorney Lori A. Conway on August 7, 2007.

TIMING CONSIDERATIONS

This matter is not time sensitive.

FISCAL IMPACT

A document processing fee of \$490 was paid by the District and deposited in the General Fund (GP) in the Department of Public Works.

AIRPORT
4100 Donald Douglas Dr.
Long Beach, CA 90808
Ph. (562) 570-2600
Fax (562) 570-2601

**BUSINESS OPERATIONS
BUREAU**
333 W. Ocean Blvd., 9th Floor
Long Beach, CA 90802
Ph. (562) 570-6383
Fax (562) 570-6012

**ENGINEERING & STREET
MAINTENANCE**
333 W. Ocean Blvd., 9th Floor
Long Beach, CA 90802
Ph. (562) 570-6634
Fax (562) 570-6012

**ENVIRONMENTAL
SERVICES**
2929 E. Willow Street
Long Beach, CA 90806
Ph. (562) 570-2850
Fax (562) 570-2861

**FACILITIES
BUREAU**
333 W. Ocean Blvd., 9th Floor
Long Beach, CA 90802
Ph. (562) 570-5786
Fax (562) 570-6012

**FLEET
SERVICES**
2600 Temple Avenue
Long Beach, CA 90806
Ph. (562) 570-5400
Fax (562) 570-5414

**TRAFFIC &
TRANSPORTATION**
333 W. Ocean Blvd., 10th Floor
Long Beach, CA 90802
Ph. (562) 570-6331
Fax (562) 570-7161

SUGGESTED ACTION:

Approve recommendation.

Respectfully submitted,




CHRISTINE F. ANDERSEN
DIRECTOR OF PUBLIC WORKS

GMM:SC:db
P\CL\ROW Deforest Co San District esmt CL.doc

Attachments

APPROVED



ANTHONY W. BATTS
CITY MANAGER

DE FOREST AVENUE TRUNK SEWER

VICINITY OF PROPOSED EASEMENT

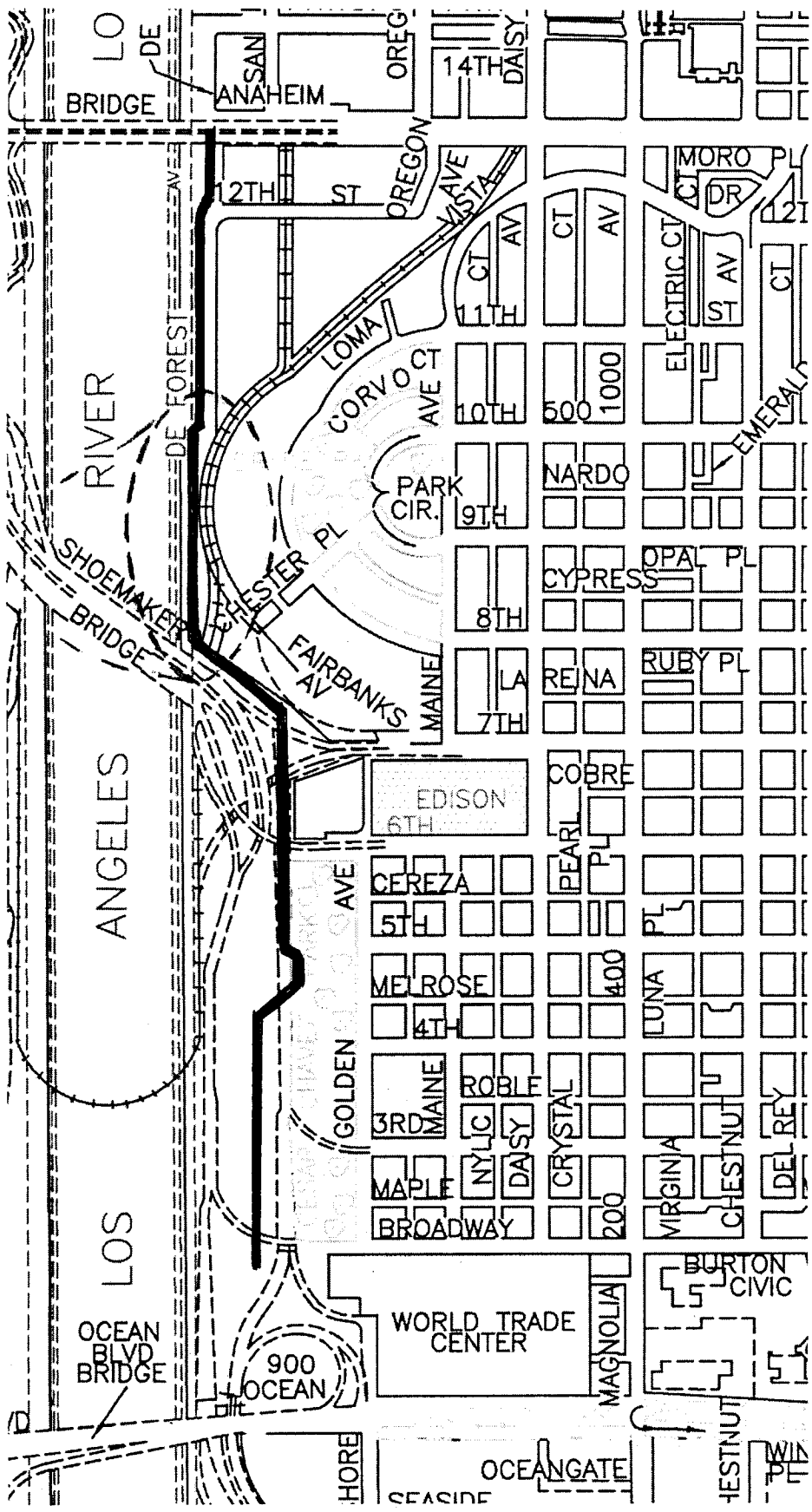
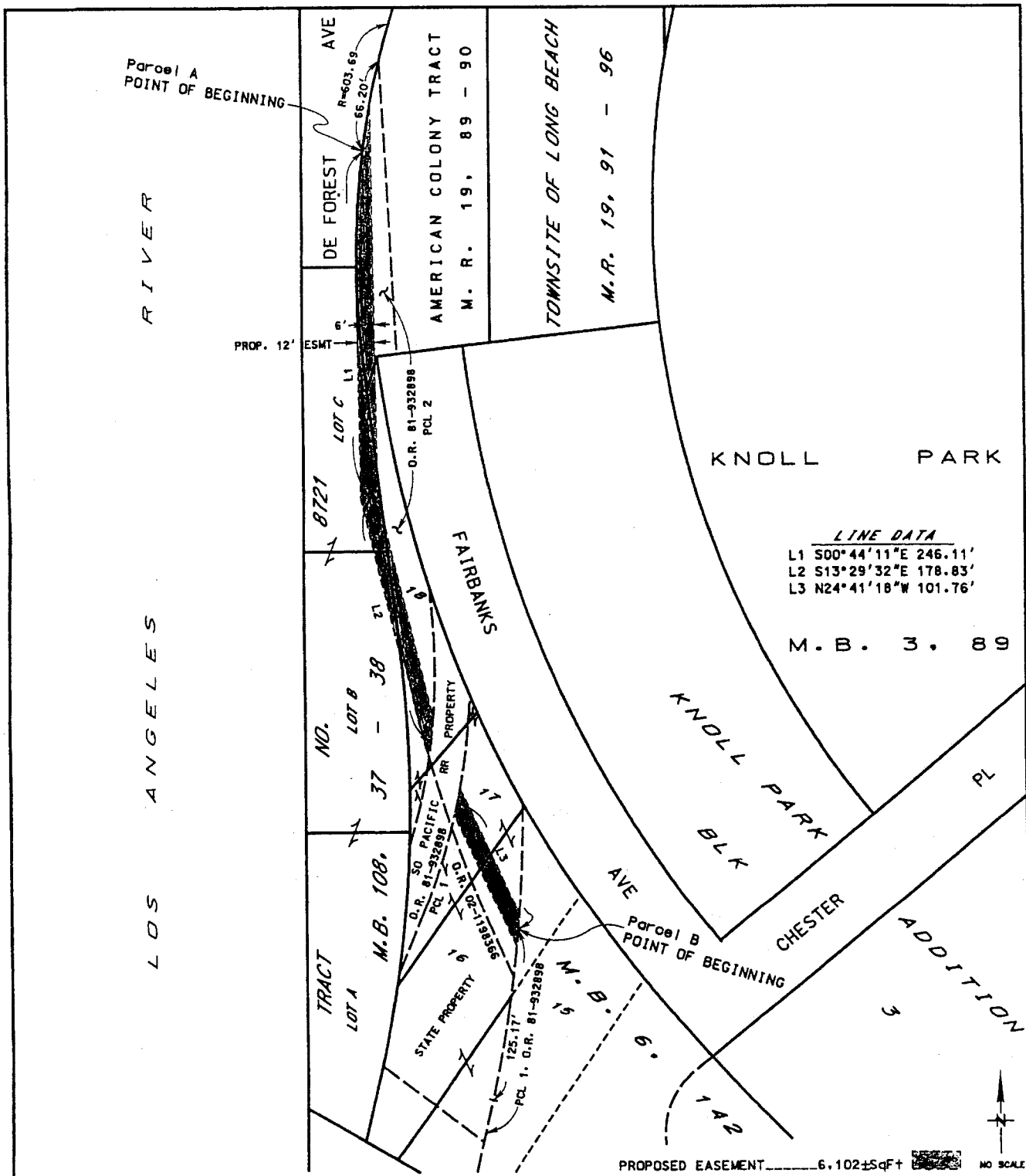


EXHIBIT A

SKETCH NO. 188 EG
SKETCH SHOWING PORTIONS OF THE AMERICAN COLONY TRACT,
TRACT NO. 8721, AND THE KNOLL PARK ADDITION,
GRANTED AS A SANITARY SEWER EASEMENT TO THE
LOS ANGELES COUNTY SANITATION DISTRICT NO. 3.

**EXHIBIT B**